

# TRANSPORTATION IMPROVEMENT PROGRAM

FEDERAL FISCAL YEARS 2022 – 2025

## **REVISION #1**

## **REVISED PROJECTS**



*Oahu* MPO

**PRE-APPROVED  
ADMINISTRATIVE  
MODIFICATIONS**

# TRANSPORTATION IMPROVEMENT PROGRAM

FEDERAL FISCAL YEARS 2022 - 2025

## REVISION #1 - PRE-APPROVED ADMINISTRATIVE MODIFICATIONS

### LIST OF REVISED PROJECTS

January 2022



**Oahu Metropolitan Planning Organization**  
707 Richards Street, Suite 200  
Honolulu, Hawaii 96813-4623 (808) 587-2015 // [www.oahumpo.org](http://www.oahumpo.org)

This report was funded in part through grants from the Federal Highway Administration and Federal Transit Administration, U.S. Department of Transportation. The views and opinions of the agency expressed herein do not necessarily state or reflect those of the U.S. Department of Transportation.

The City and County of Honolulu is using the OahuMPO TIP public involvement process, as outlined in the Federal Highway Administration/Federal Transit Administration metropolitan transportation planning regulations (23 CFR 450/49 CFR 613), to satisfy the public hearing requirements for the Federal Transit Administration's Urbanized Area Formula Program (49 U.S.C. Section 5307) program-of-projects.

# Contents

- 1 ABBREVIATIONS ..... 5**
  - 1.1 OVERALL INITIALISMS AND ACRONYMS ..... 5
  - 1.2 PROJECT LISTING ABBREVIATIONS ..... 6
- 2 REVISIONS..... 7**
- 3 PROJECTS MODIFIED IN THIS REVISION ..... 10**
- 4 PROJECT INFORMATION SHEETS..... 19**
  - FHWA-Funded Oahu State Projects ..... 19
  - FHWA-Funded Oahu City Projects ..... 44
  - FTA-Funded Oahu State Projects..... 56
  - FTA-Funded Oahu City Projects ..... 58

# 1 ABBREVIATIONS

## 1.1 OVERALL INITIALISMS AND ACRONYMS

3-C	Continuing, Cooperative, Comprehensive	MAP-21	Moving Ahead for Progress in the 21 <sup>st</sup> Century [P.L. 112-141, 2012]
ADA	Americans with Disabilities Act	MOA	Memorandum of Agreement
APE	Area of Potential Effects	NEPA	National Environmental Policy Act NHPA
CAC	OahuMPO Citizen Advisory Committee	NHPA	National Historic Preservation Act
CATEX	Categorical Exclusion	NTD	National Transit Database
CFR	Code of Federal Regulations	OahuMPO	Oahu Metropolitan Planning Organization
CCTV	Closed-circuit television	ORTP	OahuMPO Oahu Regional Transportation Plan
CMP	OahuMPO Congestion Management Process	OWP	OahuMPO Overall Work Plan
DTS	City and County of Honolulu Department of Transportation Services	PB	OahuMPO Policy Board (formerly Committee)
EJ	Environmental Justice	SAFETEA-LU	Safe, Accountable, Flexible, Efficient Transportation Equity Act – A Legacy for Users [P.L. 109-59, 2005]
FAST	Fixing America's Surface Transportation Act [P.L. 114-96, 2015]	SMP	Special Maintenance Program
FMCSA	USDOT Federal Motor Carrier Safety Administration	SOGR	State of Good Repair
FHWA	USDOT Federal Highway Administration	STIC	Small Transit Intensive Cities
FTA	USDOT Federal Transit Administration	STIP	Statewide Transportation Improvement Program
FFY	Federal Fiscal Year (October 1- September 30)	TA	Transportation Alternatives
HART	Honolulu Authority for Rapid Transportation	TAC	OahuMPO Technical Advisory Committee
HDOT	Hawaii Department of Transportation	TIP	Transportation Improvement Program
HR	House Report	T6	Title VI of the Civil Rights Act of 1964
ITS	OahuMPO Intelligent Transportation System	U.S.C.	United States Code
		UZA	Urbanized Areas

## 1.2 PROJECT LISTING ABBREVIATIONS

### FHWA Funding Categories

OS Bridge	Off-System Bridges
CMAQ	Congestion Mitigation and Air Quality Program
ER	Emergency Relief Program
FLAP	Federal Lands Access Program
NHPP	National Highway Performance Program
HSIP	Highway Safety Improvement Program
RHCP	Rail-Highway Crossings Program (§130)
SRTS	Safe Routes to School
STBG	Surface Transportation Block Grant Program
TA	Transportation Alternatives Set-Aside
TA-U	Transportation Alternatives Set Aside for Urbanized Areas
RTP	Recreational Trails Program

### FTA Funding Categories

§5307/5340	Urbanized Area Formula/ Growing States and High-Density States Formula
§5309	New Starts
§5310	Enhanced Mobility
§5329	Public Transit Safety Program
§5337	State of Good Repair
§5339	Bus and Bus Facilities
§5340	Growing States and High-Density States Formula

### Local Funding Category

Local Only	Locally Funded
------------	----------------

### Project Phases (Chronological Order)

PLN	Planning
PE1	Preliminary Design including NEPA
DES	Design
PE2	Final Design
EQP	Equipment
PREROW	Pre-right-of-Way
ROW	Right-of-Way
ADVCON	Advance Construction Reimbursement
REL	Utility Relocation
CON	Construction
OPR	Operations
INSP	Inspection

## 2 REVISIONS

The TIP covers a period of no more than four years, and a new TIP will be adopted every three years. The TIP is frequently revised to reflect changes in project delivery schedules, changes in cost estimates and/or in scope, and changes in management systems and administrative priorities. These revisions are required to assure the efficient use of the annually apportioned federal funds. The following administrative provisions have been established to promote timely implementation and oversight of the TIP. A revision refers to a change to the TIP that occurs between the triennial updates. A minor revision is an “administrative modification,” while a major revision is an “amendment.”

### **Pre-Approved Administrative Modifications:**

Pre-approved administrative modifications are minor revisions that are considered pre-approved and can be immediately processed without prior review by the OahuMPO Committees and Policy Board. No solicitation of public comment or redemonstration of financial constraint is required (23CFR450.104). However, it is assumed that financial constraint shall be re-established through the next TIP amendment process the following must be true:

- The administrative modifications must not affect the financial constraint of the TIP;
- The administrative modifications must not result in the addition of another project (excluding the addition of projects to grouped listings/programs with dedicated funding (such as Transportation Alternative Program (TAP), Safe Routes to School (SRTS), Special Maintenance Program (SMP) if the funding amounts stay within

certain guidelines (see TIP Policies and Procedures for details)

- The administrative modifications must not result in the deletion of project, including the deferral of a project to a year that is outside of the four-year TIP; and
- The affected project’s implementing agency must concur with the actions.

### **Expedited Administrative Modifications:**

Requests for expedited approval of administrative modifications are submitted directly to the Policy Board without prior review by the Technical Advisory Committee or solicitation of public comment.

### **Amendments:**

Amendments are revisions to the TIP that involve major changes to the TIP. TIP amendments are submitted to the Technical Advisory Committee, the Policy Board, and the Governor’s designee for action. Financial constraint is re-demonstrated and consistent with 23CFR450.220, the technical analyses are rerun, including the T6/EJ analysis, and the performance measure and CMP impacts are reassessed. Public comments are also solicited based on the procedures outlined in the OahuMPO Public Participation Plan, and the public comment period begins once the Amendment is posted on the OahuMPO website. Comments and the responses must be documented within the TIP Amendment document. The TIP may be revised at any time, if time permits. There will be two planned major revisions (Amendments) to the TIP in each federal fiscal year (October 1 to September 30). Table 1 below identifies the milestones in the semi-annual TIP revisions. Time frames below are subject to change.

Table 1 TIP Revision Milestones and Schedule

TIP REVISION	First Revision (fall/winter)	Second (last) Revision (spring/summer)
<b>Step 1: IDENTIFY REVISIONS</b> Notify implementing agencies that the TIP revision process is underway so that they may begin to prepare their list of changes to TIP projects.		
Early coordination: Send DTS and HART official email reminding that the TIP revision requests are due in 3 months	Early August	Early January
HDOT schedules Over-the-Shoulder-Reviews (OSRs) with HDOT, DTS, HART, and the OahuMPO to attend and obtain/share project status	Oct-Nov	March-April
TIP revision requests due to OahuMPO, along with PIJS [Project Information and Justification Sheet] or PPR [Planning Programming Request] if applicable	Mid November	Early-Mid April
<b>Step 2: DRAFT TIP REVISION(S)</b> Create draft TIP revision(s)		
OahuMPO develops and finalizes draft TIP revision(s); and works with HDOT, DTS, and HART to confirm accuracy & consistency with the current ORTP	Early December	Late April-Early May
HDOT, DTS, and HART review draft TIP revision(s)	Mid December	Late April-Early May
OahuMPO reruns analyses, and prepares a fiscally constrained draft revision document for distribution	Late December	Mid-Late May
<b>Step 3: IGR AND PUBLIC COMMENTS</b> Usually at least a two-week comment period is provided		
Revisions posted to OahuMPO website and public and agency comment period begins	Early-Mid January	Early-Mid June



TIP REVISION	First Revision (fall/winter)	Second (last) Revision (spring/summer)
Processing of public comments and preparation of presentations for OahuMPO Committees and Policy Board	Mid-Late January	Mid-Late June
<b>Step 4: PRESENTATION TO OMPO COMMITTEES</b> TIP Revisions are presented to the TAC for review and to the PB for approval.		
Technical Advisory Committee consideration	February	July
Policy Board (PB) action	Late Feb-Mid Mar	July
OahuMPO sends letter to Governor's Designee for approval of the TIP Amendment	Early-Mid March	Late July/ Early August
OahuMPO sends letter to HDOT requesting to incorporate TIP revision(s) into the STIP	Mid March	Early August
<b>Step 5: FINALIZE</b> Approval of Amendment and creation of a final "As-Of" TIP document including all the modifications and amendment		
TIP/STIP Amendment jointly approved by FHWA and FTA (anticipated)	Early-Mid Mar	Early-Mid Aug
OahuMPO website updated to show date of revision approval and final revision document	Mid March	Mid August
A full "As of revision #X" TIP document is created and uploaded to the OahuMPO website	Mid-Late March	Mid-Late August

### 3 PROJECTS MODIFIED IN THIS REVISION

This revision consists of Pre-Approved Administrative Modifications and is thus submitted directly to the Policy Board without prior review by the Technical Advisory Committee or solicitation of public comment.

#### **FHWA FUNDED PROJECTS:**

##### **STATE OF HAWAII**

PROJECT NUMBER	PROJECT NAME (ALPHABETICAL ORDER)	REVISION DETAILS	PAGE
OS1	Bridge and Pavement Improvement Program, Oahu - Interstate H-1 Airport Viaduct Rehab	Request to add a new phase for advance construction conversion (A.5).	21
OS1	Bridge and Pavement Improvement Program, Oahu - Interstate H-1 Resurfacing, Miller Ped Overpass to Kapiolani Interchange	Request to add a new phase for advance construction conversion (A.5).	21
OS1	Bridge and Pavement Improvement Program, Oahu - Kamehameha Highway Rehabilitation, Vicinity of Kapuhi Street to Dairy Road, MP 5.94 to MP 9.72	Request to add a new phase for advance construction conversion (A.5).	21
OS1	Bridge and Pavement Improvement Program, Oahu - Nimitz Highway and Ala Moana Boulevard Resurfacing, Sand Island Access Road to Piikoi Street	Request to add a new phase for advance construction conversion (A.5).	21
OS1	Bridge and Pavement Improvement Program, Oahu - Interstate H-1 Rehabilitation, Salt Lake Blvd to Airport Viaduct	Request to add a new phase for advance construction conversion (A.5).	21
OS4	Farrington Highway (Route 93), Bridge Replacement, Makaha Bridges #3 & #3A	Request to decrease ADVCON funds in FFY 2023 from 4000 (federal) and - 4000 (local) to 2000 (federal) and -2000 (local) based on obligation amount (A.11).	23

OS-21-57	Fort Barrette Road (Route 901) Railroad Crossing Improvements	Request to defer/increase CON from FFY 2022 to 2023 since programmatic agreement for railroad crossing is anticipated to be done October 2022 (A.2).	24
OS10	Guardrail and Shoulder Improvements, Various Locations	Request to update Estimated Total Project Cost from 7.2 million to 6.8 million dollars (A.11).	25
OS10	Guardrail and Shoulder Improvements, Various Locations, Phase 2	Request to add Phase 2 with CON in FFY 2022 since it was not possible to fund, and thus wasn't obligated in FFY 2021 (A.5).	25
OS14	Interstate Route H-1, Guardrail and Shoulder Improvements, Kapiolani Interchange to Ainakoa Avenue, Phase 2	Request to defer/inflate CON funds from FFY 2022 to 2023 due to contract amendment delays (A.2 and A.11).	26
OS14	Interstate Route H-1, Guardrail and Shoulder Improvements, Kapiolani Interchange to Ainakoa Avenue, Phase 2	Request to defer ADVCON by one year since CON is also being deferred (A.2).	26
OS14	Interstate Route H-1, Guardrail and Shoulder Improvements, Kapiolani Interchange to Ainakoa Avenue, Phase 1	Request to add Phase 1 with ADVCON in FFY 2022 - unable to convert all ADVCON funds in FFY 2021 (A.5).	26
OS17	Interstate Route H-1, Kapolei Interchange Complex, Phase 3	Request to increase local CON funds by 20 million due to the refining of PS&E (A.11).	27
OS67	Interstate Route H-1 , Reconstruction and Repair, Eastbound, Waimalu Interchange to Halawa	Request to reduce AC conversion from 8000(federal) and -8000 (local) based on actual obligation and conversion amounts (A.11).	28
OS70	Interstate Route H-1, Seismic Retrofit, Waialae Viaduct	Request to defer/inflate PE2, CON, and ADVCON by one year - PE1 has just commenced so project will be delayed by one year (A.2 and A.11).	29
OS-21-56	Interstate Route H-3, Halawa Valley Mitigation, Phase 2, Native Species Area to Tunnel Portal	Request to defer/inflate CON to FFY 2024 - design has not yet begun (A.2 and A.11).	30
OS-21-50	Interstate Route H-3, Halawa Valley Mitigation, Phase 3, Gate 3 to Native Species Area	Request to defer/inflate CON to FFY 2023 - design has not yet begun (A.2 and A.11).	31
OS26	Kalaniana'ole Highway (Route 72) Resurfacing, Poalima Street to Vicinity of Makai Pier	Request to increase AC conversion needed from 1500 (federal) and -1500 (local) in FFY 2022 and extend to FFY 2023 - unable to convert enough AC in FFY 2021 (A.11).	32

OS28	Kamehameha Highway (Route 83), Bridge Replacement, Kaipapau Stream Bridge	Request to reduce AC conversion needed from 4240 (federal) and -4240 (local) in FFY 2022 - due to FFY 2021 obligation/conversion amount (A.11).	33
OS34	Kamehameha Highway (Route 83), Bridge Replacement, Waiahole Bridge	Request to defer/inflate ROW, CON and ADVCON by one year - redesigning the bridge for resiliency (A.2 and A.11).	34
OS36	Kamehameha Highway (Route 83), Bridge Replacement, Waipilopilo Stream Bridge	Request to defer/inflate ROW and CON by one year - redesigning the bridge for resiliency (A.2 and A.11).	35
OS36	Kamehameha Highway (Route 83), Bridge Replacement, Waipilopilo Stream Bridge	Request to Adjust \$5M of ADVCON in 2023 and \$2.6M in FFY 2024 since CON was deferred (A.11).	35
OS36	Kamehameha Highway (Route 83), Bridge Replacement, Waipilopilo Stream Bridge	Request to update Estimated Total Project Cost from 11.3 million to 12.3 million dollars (A.11).	35
OS75	Kamehameha Highway (Route 83) Rockfall Protection, Waimea Bay	Request to defer/inflate ROW from FFY 2022 to 2023 since PE1 is not done (A.2 and A.11).	36
OS75	Kamehameha Highway (Route 83) Rockfall Protection, Waimea Bay -- Haleiwa	Request to defer/inflate PE2 from FFY 2022 to 2023 since PE1 is not done (A.2 and A.11).	36
OS45	Moanalua Freeway (Route H-201), Highway Lighting Improvements, MP 1.12 to MP 4.09 (Halawa Heights Off-Ramp to Middle St. Overpass), Phase 2	Request to increase AC conversion needed from \$3.7M in FFY 2022 and \$3M in FFY 2023 - reflecting what was obligated/converted in FFY 2021 (A.11).	37
OS46	Moanalua Freeway (Route H-201), Highway Lighting Improvements, MP 0 to MP 0.73 (Halawa to H-3 Freeway Overpass)	Request to increase AC conversion needed in FFY 2022 from 3000 (federal) and -3000 (local) - reflecting what was obligated/converted in FFY 2021 (A.11).	38
OS44	Moanalua Freeway (Route 78) and Interstate Route H-2, Guardrail and Shoulder Improvements, Phase 2	Request to increase AC conversion needed in FFY 2022 from 3900 (federal) and -3900 (local) - reflecting what was obligated/converted in FFY 2021 (A.11).	39
OS62	Pali Highway (Route 61) Resurfacing & Lighting Improvements, Vineyard Blvd (Route 98) to Kamehameha Highway (Route 83), Ph 1 - Lighting Vineyard Blvd to Kamehameha Hwy & Resurf. Waokanaka St. to Kamehameha Hwy.	Request to reinclude Phase 1 with ADVCON in FFY 2022 - unable to convert all AC requirements in FFY 2021 (A.5).	40

OS62	Pali Highway (Route 61) Resurfacing & Lighting Improvements, Vineyard Blvd (Route 98) to Kamehameha Highway (Route 83), Ph 2 - Resurfacing, Vineyard Blvd to Waokanaka St	Request to increase AC conversion needed from \$6M in FFY 2022 and add ADVCON funds in FFY 2024 - reflecting what was obligated/converted in FFY 2021 (A.11).	40
OS52	Sand Island Access Road (Route 64), Truck Weigh Station, Kapalama Container Terminal	Request to decrease AC conversion needed from 3760(federal) and - 3760(local) - reflecting what was obligated/converted in FFY 2021 (A.11).	41
OS79	Shoreline Protection/Mitigation Program, Various Locations on Oahu, Priority 1 (Immediate/short-term) Locations, Kamehameha Highway (Route 83), Coastal Highway Mitigation, Phase 1	Request to defer/inflate ROW, CON, and ADVCON by one year - PE1 has only now commenced (A.2 and A.11).	42
OS63	Traffic Counting Stations, Various Locations	Request to defer/inflate CON and ADVCON by one year - PE1 is ongoing (A.2).	44

## CITY AND COUNTY OF HONOLULU

PROJECT NUMBER	PROJECT NAME (ALPHABETICAL ORDER)	REVISION DETAILS	PAGE
OC1	Alapai Transportation Management Center Operations	Request to correct the project description to say "Operations and management for the joint communications center behind the Alapai Transit Center which holds City, State & emergency response agencies." (A.3).	46
OC2	Bikeway Improvements Program	Request to update Estimated Total Project Cost from 3.55 million to 3.301 million dollars (A.11).	47
OC2	Bikeway Improvements Program - Kailua-Lanikai Bike Path	Request to transfer the ROW phase from the FFY 2019-2022 TIP to the FFY 2022-2025 TIP and increase PE1, PE2, CON, and INSP funds (A.2, A.11) to reflect changes in cost estimates. Moving up in priority.	47
OC2	Bikeway Improvements Program - Waipahu Depot Shared Use Path	Request to transfer the PE2 phase from the FFY 2019-2022 TIP to the FFY 2022-2025 and decrease the funds (A.2, A.11).	47
OC2	Bikeway Improvements Program - Waipahu Depot Shared Use Path	Request to increase CON and INSP funds to reflect changes in cost estimates - previously constrained by local CIP budget (A.11).	47

OC2	Bikeway Improvements Program – TBD DES 2022	Request to delete project from grouped listing – no longer programming TBD phases (A.5).	47
OC3	Bridge Inspection, Inventory, and Appraisal	Request to increase DES funds in all years and update Estimated Total Project Cost from 14.834 million to 18.493 million (A.11).	48
OC4	Computerized Traffic Control System	Request to update Estimated Total Project Cost from 11.311 million to 8.861 million dollars (A.11).	49
OC4	Computerized Traffic Control System -Phase 16 Waianae	Request to defer PE2 funds from FFY 2022 of the FFY 2019-2022 TIP to FFY 2023 in the FFY 2022-2025 TIP and increase amount programmed (A.2, A.11).	49
OC4	Computerized Traffic Control System -Phase 16 Waianae	Request to decrease CON funds in FFY 2025 and increase funds in FFY 2024, due to project advancement (A.11).	49
OC4	Computerized Traffic Control System -Phase 16 Waianae	Request to advance INSP funds (A.1).	49
OC4	Computerized Traffic Control System -Phase 17 Maili	Request to defer and decrease PE1 funds from FFY 2021 of the FFY 2019-2022 TIP to FFY 2022 in the FFY 2022-2025 TIP (A.2 and A.11).	49
OC4	Computerized Traffic Control System -Phase 17 Maili	Request to defer and decrease PE2 funds from FFY 2022 of the FFY 2019-2022 TIP to FFY 2023 in the FFY 2022-2025 TIP (A.2 and A.11).	49
OC4	Computerized Traffic Control System -Phase 17 Maili	Request to advance funds from FFY 2027 to the FFY 2026 – both are illustrative years (A.1).	49
OC8	Traffic Improvements at Various Locations	Request to update Estimated Total Project Cost from 3.423 million to 7.919 million dollars (A.11).	50
OC8	Traffic Improvements at Various Locations – Mahoe and Waipahu Streets	Request to defer CON and INSP funds from FFY 2022 to FFY 2023 A.2 and increasing funds – Previously constrained by local CIP budget, revising the amount programmed to reflect changes in cost estimates (A.11).	50
OC8	Traffic Improvements at Various Locations – Kalakaua Shared Use Crossing	Request to delete project from grouped listing. Will not pursue additional PE1 Funds due to recommendation to not build based on No Build Feasibility Study (A.5).	50
OC8	Traffic Improvements at Various Locations – Manager's Drive/Hiapo Street Intersection Improvements	Request to decrease PE1 funds in 2022 and transfer from FFY 2019-2022 TIP to the FFY 2022-2025 TIP (A.2 and A.11).	50

OC8	Traffic Improvements at Various Locations - Manager's Drive/Hiapo Street Intersection Improvements	Request to increase PE2 and CON funds (A.11) and defer to FFY 2024 and 2025 respectively (A.2, A.11).	50
OC8	Traffic Improvements at Various Locations - Manager's Drive/Hiapo Street Intersection Improvements	Request to increase INSP funds in FFY 2025 (A.11).	50
OC8	Traffic Improvements at Various Locations - Keapuka Roundabout	Request to delete project from grouped listing - will not proceed with full buildout (A.5).	50
OC8	Traffic Improvements at Various Locations	Request to correct project description to reflect current changes: "Provide traffic congestion relief and improve traffic safety at various locations, including but not limited to <del>Kalakaua Shared Use Crossing, Mahoe/Waipahu Streets and Manager's Drive/Hiapo Street Intersection Improvements, and Keapuka Roundabout.</del> " (A.3).	50
OC10	Traffic Signals at Various Locations	Request to update Estimated Total Project Cost from 17.901 million to 17.018 million dollars (A.11).	51
OC10	Traffic Signals at Various Locations - Phase 15 - Prospect Street/Prospect Place, Kealamakai Street/South King Street, Sheridan Street/Makaloa Street, California Ave/Wahiawa District	Request to delete project from grouped listing - CON obligated in FFY 2021 (A.5).	51
OC10	Traffic Signals at Various Locations - Phase 17 - Kuulei Rd/Aulike St, Kamehameha Hwy/Haiku Rd, King St/Church Ln, Ahua St/Kilihau St, Kuaia St/Acacia Rd, King St/Pensacola St, Kamehameha Hwy/Pahia Rd, King St/Ward Ave, Atkinson Dr/Mahukona	Request to add project to grouped listing - CON of this project de-obligated in FFY 21 and the project removed due to inactivity from unexpected delays (A.5).	51
OC10	Traffic Signals at Various Locations - Phase 19 - Waialae Avenue at 16th Avenue, Moanalua Road at Ualo Street	Request to increase funds for CON and INSP and defer to FFY 2026 (A.7).	51
OC10	Traffic Signals at Various Locations - Phase 19 - Waialae Avenue at 16th Avenue, Moanalua Road at Ualo Street	Request to decrease funds for EQP and defer to FFY 2026 (A.7).	51

OC10	Traffic Signals at Various Locations - Phase 20 - King St/Punahou St, Makuahine/Hala Dr, Hawaii Kai/Kalalea, Kamehameha Hwy/Waikalua Rd, Ward Ave/Lunalilo, Kapahulu Interconnect	Request to remove PE1 funds from FFY 2024 (A.11)	51
OC10	Traffic Signals at Various Locations - Phase 21 - Meahaula Pkwy/Ainamakua Dr (audio Ped), Kapiolani/Ward, Kapiolani/McCully	Request to defer PE1 funds from FFY 2022 of FFY 2019-2022 TIP to FFY 2023 in FFY 2022-2025 TIP (A.2).	51
OC10	Traffic Signals at Various Locations - Phase 21 - Meahaula Pkwy/Ainamakua Dr (audio Ped), Kapiolani/Ward, Kapiolani/McCully	Request to increase PE2 funds and defer from FFY 2023 to FFY 2024 (A.2, A.11).	51
OC10	Traffic Signals at Various Locations - Phase 21 - Meahaula Pkwy/Ainamakua Dr (audio Ped), Kapiolani/Ward, Kapiolani/McCully	Request to increase funds for CON and INSP and defer both phases to FFY 2026 (A.7).	51
OC10	Traffic Signals at Various Locations - Phase 21 - Meahaula Pkwy/Ainamakua Dr (audio Ped), Kapiolani/Ward, Kapiolani/McCully	Request to defer EQP to FFY 2026 (A.7).	51
OC10	Traffic Signals at Various Locations - Phase 22 - TBD	Request to delete project from grouped listing - no longer programming TBD phases (A.5).	51
OC-21-54	Kalaeloa Boulevard Railroad Improvements	Request to remove PE2 funds in FFY 2022 and increase funds in FFY 2023 (A.11)	53
OC-21-54	Kalaeloa Boulevard Railroad Improvements	Request to update Estimated Total Project Cost from \$694,000 to \$805,000 (A.11).	53
OC23	Salt Lake Boulevard Widening, Phase 3B	Request to defederalize project Phase 3B and update Estimated Total Project Cost from 92 million to 80 million (A.9, A.11).	54
OC23	Salt Lake Boulevard Widening, Phase 3B	Request to increase/add local ROW funds in FFY 2023 (A.11)	54
OC23	Salt Lake Boulevard Widening, Phase 3B	Request to defer PE2 funds from FFY 2024 to FFY 2026 and add funds in FFY 2027 (A.2, A.11).	54



OC23	Salt Lake Boulevard Widening, Phase 3B	Request to remove/decrease CON funds in FFY 2024 and 2023, increase CON funds in FFY 2022, and add local CON funds in FFY 2026 (A.11).	54
OC23	Salt Lake Boulevard Widening, Phase 3B	Request to remove INSP phase (A.7).	54
OC25	Transportation Alternatives Program (MPO) - Ala Wai Bridge Project	Request to decrease STBG funds programmed for PE2 in FFY 2022 (A.11).	55
OC25	Transportation Alternatives Program (MPO) - Ala Wai Bridge Project	Request to transfer TA Set-Aside funds programmed for PE2 in FFY 2022 of the FFY 2019-2022 TIP to the FFY 2022 in the FFY 2022-2025 TIP (A.2).	55
OC25	Transportation Alternatives Program (MPO) - Ala Wai Bridge Project	Request to defer TA Set-Aside funds for CON from FFYs 2022 and 2023 to FFYs 2025 and 2026 (A.2).	55
OC25	Transportation Alternatives Program (MPO) - Ala Wai Bridge Project	Request to defer and increase STBG funds for CON (A.2 and A.11).	55
OC26	Transportation Alternatives Program (STATE) - Haleiwa Road Multi-Use Path	Request to update Estimated Total Project Cost from 2.921 million to 1.892 million dollars (A.11).	56
OC26	Transportation Alternatives Program (STATE) - Haleiwa Road Multi-Use Path	Request to remove PE2 phase and decrease CON funds (A.7, A.11).	56
OC26	Transportation Alternatives Program (STATE) - Haleiwa Road Multi-Use Path	Request to defer and increase INSP funds (A.2, A.11).	56

## **FTA FUNDED PROJECTS:**

### **STATE OF HAWAII**

<b>PROJECT NUMBER</b>	<b>PROJECT NAME (ALPHABETICAL ORDER)</b>	<b>REVISION DETAILS</b>	<b>PAGE</b>
OS68	HDOT State Safety Oversight Program	Request to increase OPR funds in all years programmed due to unused funding and revised projections (A.11).	58
OS68	HDOT State Safety Oversight Program	Request to update Estimated Total Project Cost from 1.874 million to 2.582 million dollars (A.11).	58

## CITY AND COUNTY OF HONOLULU

PROJECT NUMBER	PROJECT NAME (ALPHABETICAL ORDER)	REVISION DETAILS	PAGE
OC20	Preventive Maintenance	Request to update Estimated Total Project Cost from 105 million to 157.5 million dollars - correcting previous error where funds were not accurately added (A.11).	60
OC21	Transit Safety and Security Projects	Request to remove DES funds from FFY 2022 (A.11).	61
OC21	Transit Safety and Security Projects	Request to decrease CON funds from FFY 2022 (A.11).	61
OC21	Transit Safety and Security Projects	Request to add EQP funds in FFY 2022 (A.11).	61
OC21	Transit Safety and Security Projects	Request to update Estimated Total Project Cost from 3.020 million to 3.091 million dollars (A.11).	61
OC-21-59	Intermodal Connectivity - TA Set-Aside (OahuMPO) - Phase 2 - Rail Station Multimodal Access Improvements - Halawa Station to Waiawa Station	Request to defederalize CON and INSP phases (A.9).	62
OC24	Capital Training	Request to remove OPR funds from FFY 2022 due to COVID-19 related travel ban (A.11).	63
OC24	Capital Training	Request to update Estimated Total Project Cost from \$172,000 to \$146,000 (A.11).	63

NUMBER OF PROJECTS BEING REVISED IN REVISION # 1:	PERCENTAGE OF TOTAL TIP PROJECTS REVISED IN REVISION # 1:
<b>37</b>	<b>51 %</b>

## **4 PROJECT INFORMATION SHEETS**

### **FHWA-Funded Projects**

#### **O'ahu State (OS) Projects**



Source: Esri, Maxar, GeoEye, Earthstar Geographics, CNES/Airbus DS, USDA, USGS, AeroGRID, IGN, and the GIS User Community

#### Project Description:

This is an ongoing islandwide program for the system maintenance of highway bridges and pavement. The Special Maintenance Program (SMP) is a program that funds individual repair or maintenance projects that do not normally occur annually. SMP funds have funded resurfacing, pavement, and bridge preservation projects (System Preservation). Work may include bridge and/or pavement reconstruction, resurfacing, restoration, rehabilitation, and/or preservation. Yearly lump sum amounts represent total SMP State funding levels anticipated for the Oahu program.

**Mile Post/s:** Not applicable

#### Complete Streets (CS):

**Project will implement:** No information available. However, CS principles will be considered in all Highway projects.

**Existing Feature/s:** No information available.

**Project Website:** None

**Neighborhood(s):** Various Locations

**Estimated Total Project Cost:** \$126,000,000

(May include project costs outside of the 4-year TIP and 2 informational years.)

**Project Sponsor:** State of Hawaii (FHWA Funded)

**Agency Responsible for Carrying Out Project/Phase:**

Hawaii Department of Transportation

#### FOR INFORMATION ONLY

Phase	FFY 2022			FFY 2023			FFY 2024			FFY 2025			FFY 2026			FFY 2027			Funding Category
	Total (x\$1000)	Federal (x\$1000)	Local (x\$1000)	Total (x\$1000)	Federal (x\$1000)	Local (x\$1000)	Total (x\$1000)	Federal (x\$1000)	Local (x\$1000)	Total (x\$1000)	Federal (x\$1000)	Local (x\$1000)	Total (x\$1000)	Federal (x\$1000)	Local (x\$1000)	Total (x\$1000)	Federal (x\$1000)	Local (x\$1000)	
CON	21,000	0	21,000	21,000	0	21,000	21,000	0	21,000	21,000	0	21,000	21,000	0	21,000	21,000	0	21,000	Local Only
<i>Interstate H-1 Airport Viaduct Rehab</i>																			
ADVCON	0	1,187	-1,187	0	0	0	0	0	0	0	0	0	0	0	0	0	0	0	NHPP
<i>Interstate H-1 Rehabilitation, Salt Lake Blvd to Airport Viaduct</i>																			
ADVCON	0	5,999	-5,999	0	10,000	-10,000	0	5,000	-5,000	0	0	0	0	0	0	0	0	0	NHPP
<i>Interstate H-1 Resurfacing, Miller Ped Overpass to Kapiolani Interchange</i>																			
ADVCON	0	7,363	-7,363	0	15,000	-15,000	0	5,000	-5,000	0	0	0	0	0	0	0	0	0	NHPP
<i>Kamehameha Hwy Rehabilitation, Vicinity of Kapuhi St to Dairy Rd, MP 5.94 to MP 9.72</i>																			

**OS1      Bridge and Pavement Improvement Program, Oahu**

													FOR INFORMATION ONLY						Funding Category
FFY 2022			FFY 2023			FFY 2024			FFY 2025			FFY 2026			FFY 2027				
Phase	Total (x\$1000)	Federal (x\$1000)	Local (x\$1000)	Total (x\$1000)	Federal (x\$1000)	Local (x\$1000)	Total (x\$1000)	Federal (x\$1000)	Local (x\$1000)	Total (x\$1000)	Federal (x\$1000)	Local (x\$1000)	Total (x\$1000)	Federal (x\$1000)	Local (x\$1000)	Total (x\$1000)	Federal (x\$1000)	Local (x\$1000)	
Kamehameha Hwy Rehabilitation, Vicinity of Kapuhi St to Dairy Rd, MP 5.94 to MP 9.72																			
ADVCON	0	7,326	-7,326	0	0	0	0	0	0	0	0	0	0	0	0	0	0	0	NHPP
Kamehameha Hwy, Kamananui Rd and Wilikina Dr Rehabilitation																			
ADVCON	0	3,000	-3,000	0	8,000	-8,000	0	0	0	0	0	0	0	0	0	0	0	0	NHPP
Nimitz Hwy and Ala Moana Blvd Resurfacing, Sand Island Access Rd to Piikoi St																			
ADVCON	0	5,169	-5,169	0	0	0	0	0	0	0	0	0	0	0	0	0	0	0	NHPP
Total	21,000	30,044	-9,044	21,000	33,000	-12,000	21,000	10,000	11,000	21,000	0	21,000	21,000	0	21,000	21,000	0	21,000	



Source: Esri, Maxar, GeoEye, Earthstar Geographics, CNES/Airbus DS, USDA, USGS, AeroGRID, IGN, and the GIS User Community, Sources: Esri, HERE, Garmin, FAO, NOAA, USGS, © OpenStreetMap contributors, and the GIS User Community

**Project Description:**  
 Replace two timber bridges in the vicinity of Makaha Beach Park. For both bridges, the scope includes widening the paved shoulders on the makai side from 3 feet to 10 feet; and, widening the mauka side from 1 foot to 10 feet. This is to accommodate bicyclists and pedestrians.

**Mile Post/s:**       MP 14.20 to MP 14.10

**Complete Streets (CS):**  
**Project will implement:** Shared-use paths of 10 feet or greater width  
  
**Existing Feature/s:**     No information available.

**Project Website:** None

**Neighborhood(s):**   Waianae Coast

**Estimated Total Project Cost:** \$25,200,000  
*(May include project costs outside of the 4-year TIP and 2 informational years.)*

**Project Sponsor:** State of Hawaii (FHWA Funded)

**Agency Responsible for Carrying Out Project/Phase:**  
 Hawaii Department of Transportation

Phase													FOR INFORMATION ONLY						Funding Category
	FFY 2022			FFY 2023			FFY 2024			FFY 2025			FFY 2026			FFY 2027			
	Total	Federal	Local	Total	Federal	Local	Total	Federal	Local	Total	Federal	Local	Total	Federal	Local	Total	Federal	Local	
	(x\$1000)	(x\$1000)	(x\$1000)	(x\$1000)	(x\$1000)	(x\$1000)	(x\$1000)	(x\$1000)	(x\$1000)	(x\$1000)	(x\$1000)	(x\$1000)	(x\$1000)	(x\$1000)	(x\$1000)	(x\$1000)	(x\$1000)	(x\$1000)	
ADVCON	0	8,000	-8,000	0	2,000	-2,000	0	0	0	0	0	0	0	0	0	0	0	0	NHPP
Total	0	8,000	-8,000	0	2,000	-2,000	0	0	0	0	0	0	0	0	0	0	0	0	

## OS-21-57 Fort Barrette Road Railroad Crossing Improvements



Source: Esri, Maxar, GeoEye, Earthstar Geographics, CNES/Airbus DS, USDA, USGS, AeroGRID, IGN, and the GIS User Community, Sources: Esri, HERE, Garmin, FAO, NOAA, USGS, © OpenStreetMap contributors, and the GIS User Community

### Project Description:

The project includes upgrading the existing railroad crossing from asphalt to concrete, replacing the existing wooden tracks and ties, and installing new automated crossing gates and signals which will be synced with the new traffic signal at Roosevelt Avenue.

**Mile Post/s:** MP 0.2

### Complete Streets (CS):

**Project will implement:** Marked crosswalks and pedestrian Indication (Signal)

**Existing Feature/s:**

### Project Website:

**Neighborhood(s):** Makakilo-Kapolei-Honokai Hale

**Estimated Total Project Cost:** \$2,750,000

(May include project costs outside of the 4-year TIP and 2 informational years.)

**Project Sponsor:** State of Hawaii (FHWA Funded)

### Agency Responsible for Carrying Out Project/Phase:

Hawaii Department of Transportation

### FOR INFORMATION ONLY

Phase	FFY 2022			FFY 2023			FFY 2024			FFY 2025			FFY 2026			FFY 2027			Funding Category
	Total (x\$1000)	Federal (x\$1000)	Local (x\$1000)	Total (x\$1000)	Federal (x\$1000)	Local (x\$1000)	Total (x\$1000)	Federal (x\$1000)	Local (x\$1000)	Total (x\$1000)	Federal (x\$1000)	Local (x\$1000)	Total (x\$1000)	Federal (x\$1000)	Local (x\$1000)	Total (x\$1000)	Federal (x\$1000)	Local (x\$1000)	
CON	0	0	0	2,300	2,070	230	0	0	0	0	0	0	0	0	0	0	0	0	RHCP
Total	0	0	0	2,300	2,070	230	0	0	0	0	0	0	0	0	0	0	0	0	



## OS10 Guardrail and Shoulder Improvements, Various Locations



Source: Esri, Maxar, GeoEye, Earthstar Geographics, CNES/Airbus DS, USDA, USGS, AeroGRID, IGN, and the GIS User Community, Sources: Esri, HERE, Garmin, FAO, NOAA, USGS, © OpenStreetMap contributors, and the GIS User Community

### Project Description:

Install and upgrade guardrails to bridge end post connections, bridge railing, guardrail end terminals, crash attenuators, miscellaneous drainage, and other appurtenant improvements.

**Mile Post/s:** Not applicable

### Complete Streets (CS):

**Project will implement:** Install various safety features including guardrails and crash attenuators

**Existing Feature/s:** No information available.

**Project Website:** None

**Neighborhood(s):** Various Locations

**Estimated Total Project Cost:** \$6,800,000

(over 6 years)

**Project Sponsor:** State of Hawaii (FHWA Funded)

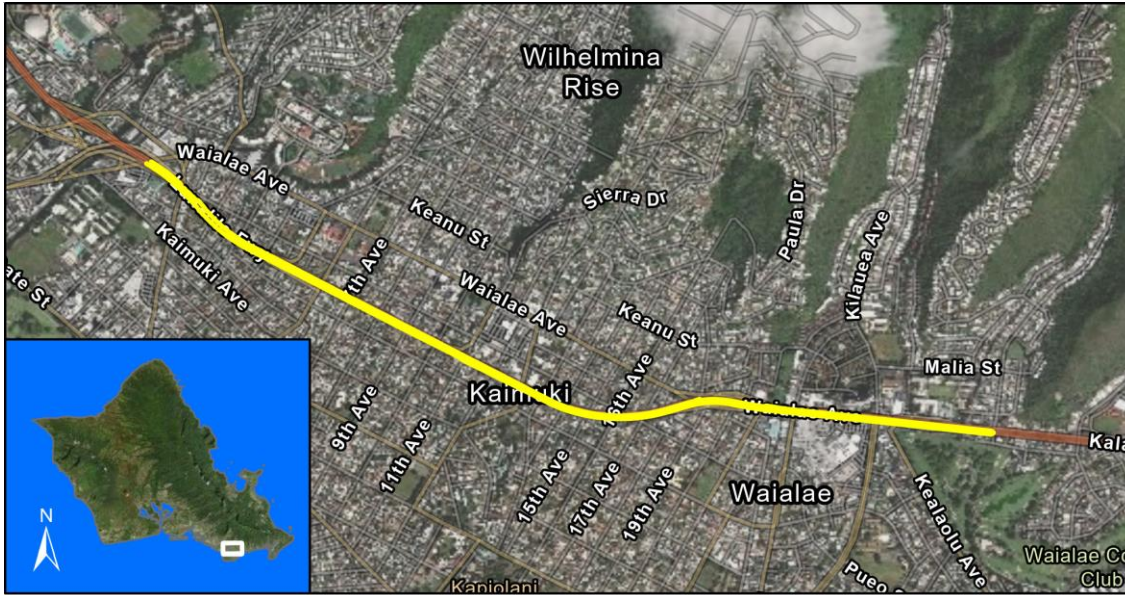
**Agency Responsible for Carrying Out Project/Phase:**  
Hawaii Department of Transportation

### FOR INFORMATION ONLY

Phase	FFY 2022			FFY 2023			FFY 2024			FFY 2025			FFY 2026			FFY 2027			Funding Category
	Total (x\$1000)	Federal (x\$1000)	Local (x\$1000)	Total (x\$1000)	Federal (x\$1000)	Local (x\$1000)	Total (x\$1000)	Federal (x\$1000)	Local (x\$1000)	Total (x\$1000)	Federal (x\$1000)	Local (x\$1000)	Total (x\$1000)	Federal (x\$1000)	Local (x\$1000)	Total (x\$1000)	Federal (x\$1000)	Local (x\$1000)	
<i>Phase 2</i>																			
CON	500	400	100	0	0	0	0	0	0	0	0	0	0	0	0	0	0	0	HSIP
<i>Phase 3</i>																			
PE2	100	0	100	0	0	0	0	0	0	0	0	0	0	0	0	0	0	0	HSIP
CON	0	0	0	2,000	1,600	400	0	0	0	0	0	0	0	0	0	0	0	0	HSIP
<i>Phase 4</i>																			
PE2	0	0	0	0	0	0	100	0	100	0	0	0	0	0	0	0	0	0	HSIP
CON	0	0	0	0	0	0	0	0	0	2,000	1,600	400	0	0	0	0	0	0	HSIP
<i>Phase 5</i>																			
PE2	0	0	0	0	0	0	0	0	0	0	0	0	100	0	100	0	0	0	HSIP
CON	0	0	0	0	0	0	0	0	0	0	0	0	0	0	0	2,000	1,600	400	HSIP
<b>Total</b>	<b>600</b>	<b>400</b>	<b>200</b>	<b>2,000</b>	<b>1,600</b>	<b>400</b>	<b>100</b>	<b>0</b>	<b>100</b>	<b>2,000</b>	<b>1,600</b>	<b>400</b>	<b>100</b>	<b>0</b>	<b>100</b>	<b>2,000</b>	<b>1,600</b>	<b>400</b>	



**OS14 Interstate Route H-1, Guardrail and Shoulder Improvements, Kapiolani Interchange to Ainakoa Avenue, Phase 2**



Source: Esri, Maxar, GeoEye, Earthstar Geographics, CNES/Airbus DS, USDA, USGS, AeroGRID, IGN, and the GIS User Community, Sources: Esri, HERE, Garmin, FAO, NOAA, USGS, © OpenStreetMap contributors, and the GIS User Community

**Project Description:**

Install and/or upgrade existing guardrails, crash cushions, and concrete barriers to meet current standards. Upgrade lighting.

On Westbound Kalanianaʻole Highway, just before the Ainakoa Intersection, the shoulder and bike lane tapers off until it disappears at Ainakoa. To the west on H-1, and on the off-ramp to below the viaduct towards Kahala Mall, a shoulder and bike lane reappears. The project will close that gap in the bike lane, by taking space from the median on H-1.

**Mile Post/s:** MP 25.24 to MP 27.16

**Complete Streets (CS):**

**Project will implement:** Close gap in bike lane.

**Existing Feature/s:** No information available.

**Project Website:** None

**Neighborhood(s):** Waialae-Kahala, Kaimuki, Diamond Head-Kapahulu-St. Louis Heights, McCully-Moiliili

**Estimated Total Project Cost:** \$12,500,000

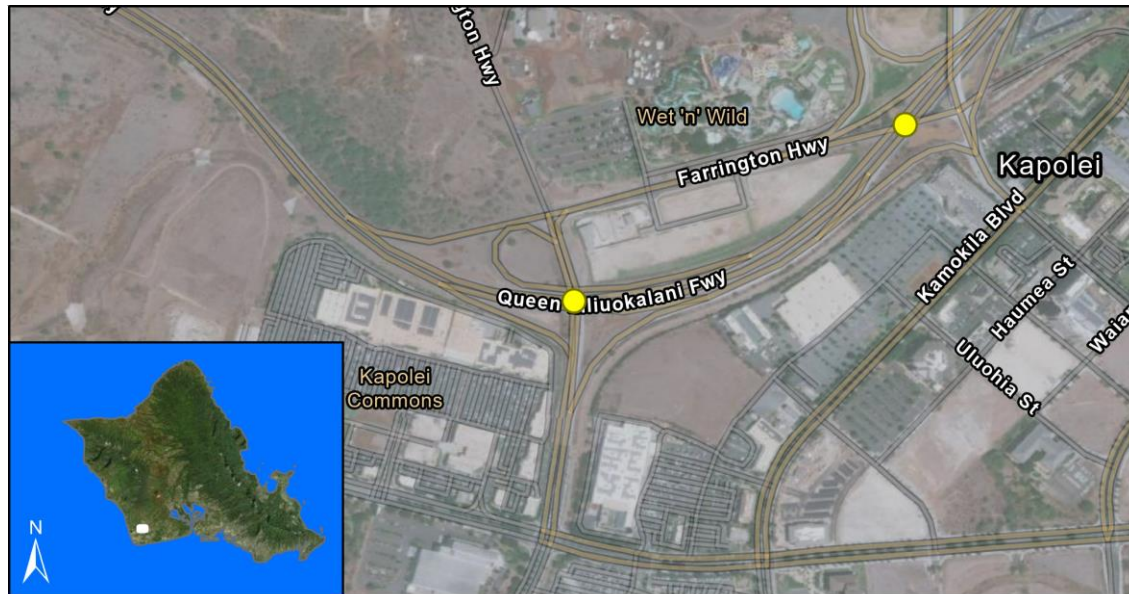
(May include project costs outside of the 4-year TIP and 2 informational years.)

**Project Sponsor:** State of Hawaii (FHWA Funded)

**Agency Responsible for Carrying Out Project/Phase:**  
Hawaii Department of Transportation

**FOR INFORMATION ONLY**

Phase	FFY 2022			FFY 2023			FFY 2024			FFY 2025			FFY 2026			FFY 2027			Funding Category
	Total (x\$1000)	Federal (x\$1000)	Local (x\$1000)	Total (x\$1000)	Federal (x\$1000)	Local (x\$1000)	Total (x\$1000)	Federal (x\$1000)	Local (x\$1000)	Total (x\$1000)	Federal (x\$1000)	Local (x\$1000)	Total (x\$1000)	Federal (x\$1000)	Local (x\$1000)	Total (x\$1000)	Federal (x\$1000)	Local (x\$1000)	
<i>Phase 1</i>																			
ADVCON	0	1,050	-1,050	0	0	0	0	0	0	0	0	0	0	0	0	0	0	0	NHPP
<i>Phase 2</i>																			
CON	0	0	0	6,120	896	5,224	0	0	0	0	0	0	0	0	0	0	0	0	NHPP
ADVCON	0	0	0	0	0	0	0	4,000	-4,000	0	0	0	0	0	0	0	0	0	NHPP
<b>Total</b>	<b>0</b>	<b>1,050</b>	<b>-1,050</b>	<b>6,120</b>	<b>896</b>	<b>5,224</b>	<b>0</b>	<b>4,000</b>	<b>-4,000</b>	<b>0</b>	<b>0</b>	<b>0</b>	<b>0</b>	<b>0</b>	<b>0</b>	<b>0</b>	<b>0</b>	<b>0</b>	



Source: Esri, Maxar, GeoEye, Earthstar Geographics, CNES/Airbus DS, USDA, USGS, AeroGRID, IGN, and the GIS User Community, Sources: Esri, HERE, Garmin, FAO, NOAA, USGS, © OpenStreetMap contributors, and the GIS User Community

**Project Description:**

Phase 3 scope of work is widening Farrington Highway, enlarging the H-1 Freeway loop off-ramp to Kalaeloa Blvd, construct the Mauka Frontage Road from Makakilo Drive to Kapolei Interchange, and construct the Palailai Interchange.

**Mile Post/s:** MP 0.34 to MP 0.79

**Complete Streets (CS):**

**Project will implement:** No information available.

**Existing Feature/s:** No information available. However, CS principles will be considered in all Highway Projects.

**Project Website:** None

**Neighborhood(s):** Makakilo-Kapolei-Honokai Hale

**Estimated Total Project Cost:** \$139,000,000

(May include project costs outside of the 4-year TIP and 2 informational years.)

**Project Sponsor:** State of Hawaii (FHWA Funded)

**Agency Responsible for Carrying Out Project/Phase:**

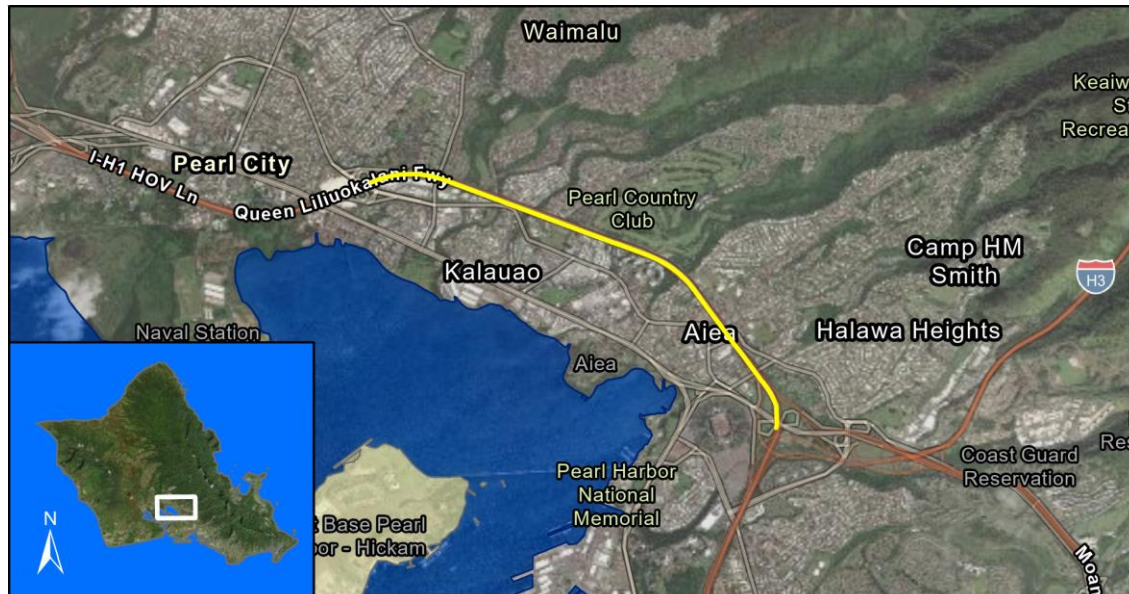
Hawaii Department of Transportation

**FOR INFORMATION ONLY**

Phase	FFY 2022			FFY 2023			FFY 2024			FFY 2025			FFY 2026			FFY 2027			Funding Category
	Total (x\$1000)	Federal (x\$1000)	Local (x\$1000)	Total (x\$1000)	Federal (x\$1000)	Local (x\$1000)	Total (x\$1000)	Federal (x\$1000)	Local (x\$1000)	Total (x\$1000)	Federal (x\$1000)	Local (x\$1000)	Total (x\$1000)	Federal (x\$1000)	Local (x\$1000)	Total (x\$1000)	Federal (x\$1000)	Local (x\$1000)	
Phase 3																			
CON	0	0	0	0	0	0	0	0	0	51,000	0	51,000	0	0	0	0	0	0	Local Only
Total	0	0	0	0	0	0	0	0	0	51,000	0	51,000	0	0	0	0	0	0	



**OS67 Interstate Route H-1, Reconstruction and Repair, Eastbound, Waimalu Interchange to Halawa**



Source: Esri, Maxar, GeoEye, Earthstar Geographics, CNES/Airbus DS, USDA, USGS, AeroGRID, IGN, and the GIS User Community, Sources: Esri, HERE, Garmin, FAO, NOAA, USGS, © OpenStreetMap contributors, and the GIS User Community

**Project Description:**

Rehabilitate or reconstruct Portland concrete pavement. Widen to improve shoulders and travelway.

**Mile Post/s:**

**Complete Streets (CS):**

Project will implement: Not applicable

Existing Feature/s: No information available.

**Project Website:** None

**Neighborhood(s):** Aiea, Pearl City

**Estimated Total Project Cost:** \$93,000,000

(May include project costs outside of the 4-year TIP and 2 informational years.)

**Project Sponsor:** State of Hawaii (FHWA Funded)

**Agency Responsible for Carrying Out Project/Phase:**

Hawaii Department of Transportation

**FOR INFORMATION ONLY**

Phase	FFY 2022			FFY 2023			FFY 2024			FFY 2025			FFY 2026			FFY 2027			Funding Category
	Total (x\$1000)	Federal (x\$1000)	Local (x\$1000)	Total (x\$1000)	Federal (x\$1000)	Local (x\$1000)	Total (x\$1000)	Federal (x\$1000)	Local (x\$1000)	Total (x\$1000)	Federal (x\$1000)	Local (x\$1000)	Total (x\$1000)	Federal (x\$1000)	Local (x\$1000)	Total (x\$1000)	Federal (x\$1000)	Local (x\$1000)	
ADVCON	0	300	-300	0	0	0	0	0	0	0	0	0	0	0	0	0	0	0	NHPP
Total	0	300	-300	0	0	0	0	0	0	0	0	0	0	0	0	0	0	0	

**OS70 Interstate Route H-1, Seismic Retrofit, Waialae Viaduct**



Source: Esri, Maxar, GeoEye, Earthstar Geographics, CNES/Airbus DS, USDA, USGS, AeroGRID, IGN, and the GIS User Community, Sources: Esri, HERE, Garmin, FAO, NOAA, USGS, © OpenStreetMap contributors, and the GIS User Community

**Project Description:**

Retrofit interchange structures to meet current seismic standards.

**Mile Post/s:** MP 26.50 to MP 26.90

**Complete Streets (CS):**

**Project will implement:** Not applicable

**Existing Feature/s:** No information available.

**Project Website:** None

**Neighborhood(s):** Waialae-Kahala, Kaimuki

**Estimated Total Project Cost:** \$7,764,000

(May include project costs outside of the 4-year TIP and 2 informational years.)

**Project Sponsor:** State of Hawaii (FHWA Funded)

**Agency Responsible for Carrying Out Project/Phase:**

Hawaii Department of Transportation

**FOR INFORMATION ONLY**

Phase	FFY 2022			FFY 2023			FFY 2024			FFY 2025			FFY 2026			FFY 2027			Funding Category
	Total (x\$1000)	Federal (x\$1000)	Local (x\$1000)	Total (x\$1000)	Federal (x\$1000)	Local (x\$1000)	Total (x\$1000)	Federal (x\$1000)	Local (x\$1000)	Total (x\$1000)	Federal (x\$1000)	Local (x\$1000)	Total (x\$1000)	Federal (x\$1000)	Local (x\$1000)	Total (x\$1000)	Federal (x\$1000)	Local (x\$1000)	
PE2	0	0	0	1,020	816	204	0	0	0	0	0	0	0	0	0	0	0	0	NHPP
CON	0	0	0	0	0	0	6,225	1,980	4,245	0	0	0	0	0	0	0	0	0	NHPP
ADVCON	0	0	0	0	0	0	0	0	0	0	3,000	-3,000	0	0	0	0	0	0	NHPP
<b>Total</b>	<b>0</b>	<b>0</b>	<b>0</b>	<b>1,020</b>	<b>816</b>	<b>204</b>	<b>6,225</b>	<b>1,980</b>	<b>4,245</b>	<b>0</b>	<b>3,000</b>	<b>-3,000</b>	<b>0</b>	<b>0</b>	<b>0</b>	<b>0</b>	<b>0</b>	<b>0</b>	

SITES TO BE  
DETERMINED

**Project Description:**

Provide mitigation to help restore Halawa Valley to pre H-3 conditions as much as reasonably possible.

**Mile Post/s:**

**Complete Streets (CS):**

**Project will implement:** Not applicable

**Existing Feature/s:** Not applicable

**Project Website:** None

**Neighborhood(s):** Aiea

**Estimated Total Project Cost:** \$5,500,000

*(May include project costs outside of the 4-year TIP and 2 informational years.)*

**Project Sponsor:** State of Hawaii (FHWA Funded)

**Agency Responsible for Carrying Out Project/Phase:**

Hawaii Department of Transportation

**FOR INFORMATION ONLY**

Phase	FFY 2022			FFY 2023			FFY 2024			FFY 2025			FFY 2026			FFY 2027			Funding Category
	Total (x\$1000)	Federal (x\$1000)	Local (x\$1000)	Total (x\$1000)	Federal (x\$1000)	Local (x\$1000)	Total (x\$1000)	Federal (x\$1000)	Local (x\$1000)	Total (x\$1000)	Federal (x\$1000)	Local (x\$1000)	Total (x\$1000)	Federal (x\$1000)	Local (x\$1000)	Total (x\$1000)	Federal (x\$1000)	Local (x\$1000)	
CON	0	0	0	0	0	0	5,100	4,080	1,020	0	0	0	0	0	0	0	0	0	NHPP
Total	0	0	0	0	0	0	5,100	4,080	1,020	0	0	0	0	0	0	0	0	0	

SITES TO BE  
DETERMINED

**Project Description:**

Provide mitigation to help restore Halawa Valley to pre H-3 conditions as much as reasonably possible.

**Mile Post/s:**

**Complete Streets (CS):**

**Project will implement:** Not applicable

**Existing Feature/s:** Not applicable

**Project Website:** None

**Neighborhood(s):** Aiea

**Estimated Total Project Cost:** \$5,500,000

*(May include project costs outside of the 4-year TIP and 2 informational years.)*

**Project Sponsor:** State of Hawaii (FHWA Funded)

**Agency Responsible for Carrying Out Project/Phase:**

Hawaii Department of Transportation

**FOR INFORMATION ONLY**

Phase	FFY 2022			FFY 2023			FFY 2024			FFY 2025			FFY 2026			FFY 2027			Funding Category
	Total (x\$1000)	Federal (x\$1000)	Local (x\$1000)	Total (x\$1000)	Federal (x\$1000)	Local (x\$1000)	Total (x\$1000)	Federal (x\$1000)	Local (x\$1000)	Total (x\$1000)	Federal (x\$1000)	Local (x\$1000)	Total (x\$1000)	Federal (x\$1000)	Local (x\$1000)	Total (x\$1000)	Federal (x\$1000)	Local (x\$1000)	
CON	0	0	0	5,100	4,080	1,020	0	0	0	0	0	0	0	0	0	0	0	0	NHPP
Total	0	0	0	5,100	4,080	1,020	0	0	0	0	0	0	0	0	0	0	0	0	



Source: Esri, Maxar, GeoEye, Earthstar Geographics, CNES/Airbus DS, USDA, USGS, AeroGRID, IGN, and the GIS User Community, Sources: Esri, HERE, Garmin, FAO, NOAA, USGS, © OpenStreetMap contributors, and the GIS User Community

Project Description:

Roadway resurfacing of Kalanianaʻole Highway from Poalima Street to Vicinity of Makai Pier.

Mile Post/s:

MP 3.35 to MP 5.65

Complete Streets (CS):

Project will implement:

No information available. However, CS principles will be considered in all Highway Projects.

Existing Feature/s:

No information available.

Project Website:

None

Neighborhood(s):

Waimanalo

Estimated Total Project Cost:

\$22,500,000

(May include project costs outside of the 4-year TIP and 2 informational years.)

Project Sponsor:

State of Hawaii (FHWA Funded)

Agency Responsible for Carrying Out Project/Phase:

Hawaii Department of Transportation

Phase	FOR INFORMATION ONLY																		Funding Category
	FFY 2022			FFY 2023			FFY 2024			FFY 2025			FFY 2026			FFY 2027			
	Total	Federal	Local	Total	Federal	Local	Total	Federal	Local	Total	Federal	Local	Total	Federal	Local	Total	Federal	Local	
	(x\$1000)	(x\$1000)	(x\$1000)	(x\$1000)	(x\$1000)	(x\$1000)	(x\$1000)	(x\$1000)	(x\$1000)	(x\$1000)	(x\$1000)	(x\$1000)	(x\$1000)	(x\$1000)	(x\$1000)	(x\$1000)	(x\$1000)	(x\$1000)	
ADVCON	0	3,000	-3,000	0	6,000	-6,000	0	0	0	0	0	0	0	0	0	0	0	0	NHPP
Total	0	3,000	-3,000	0	6,000	-6,000	0	0	0	0	0	0	0	0	0	0	0	0	



**OS28 Kamehameha Highway (Route 83), Bridge Replacement, Kaipapau Stream Bridge**



Source: Esri, Maxar, GeoEye, Earthstar Geographics, CNES/Airbus DS, USDA, USGS, AeroGRID, IGN, and the GIS User Community, Sources: Esri, HERE, Garmin, FAO, NOAA, USGS, © OpenStreetMap contributors, and the GIS User Community

**Project Description:**

Replace the existing bridge on Kamehameha Highway.

**Mile Post/s:** Kamehameha Highway: MP 20.78 to MP 20.85

**Complete Streets (CS):**

**Project will implement:** No information available. However, CS principles will be considered in all Highway Projects.

**Existing Feature/s:** No information available.

**Project Website:** None

**Neighborhood(s):** Koolauloa

**Estimated Total Project Cost:** \$25,600,000

*(May include project costs outside of the 4-year TIP and 2 informational years.)*

**Project Sponsor:** State of Hawaii (FHWA Funded)

**Agency Responsible for Carrying Out Project/Phase:**

Hawaii Department of Transportation

**FOR INFORMATION ONLY**

Phase	FFY 2022			FFY 2023			FFY 2024			FFY 2025			FFY 2026			FFY 2027			Funding Category
	Total (x\$1000)	Federal (x\$1000)	Local (x\$1000)	Total (x\$1000)	Federal (x\$1000)	Local (x\$1000)	Total (x\$1000)	Federal (x\$1000)	Local (x\$1000)	Total (x\$1000)	Federal (x\$1000)	Local (x\$1000)	Total (x\$1000)	Federal (x\$1000)	Local (x\$1000)	Total (x\$1000)	Federal (x\$1000)	Local (x\$1000)	
ADVCON	0	3,400	-3,400	0	3,000	-3,000	0	5,000	-5,000	0	0	0	0	0	0	0	0	0	NHPP
Total	0	3,400	-3,400	0	3,000	-3,000	0	5,000	-5,000	0	0	0	0	0	0	0	0	0	



**OS34 Kamehameha Highway (Route 83), Bridge Replacement, Waiahole Stream Bridge**



Source: Esri, Maxar, GeoEye, Earthstar Geographics, CNES/Airbus DS, USDA, USGS, AeroGRID, IGN, and the GIS User Community, Sources: Esri, HERE, Garmin, FAO, NOAA, USGS, © OpenStreetMap contributors, and the GIS User Community

**Project Description:**

Replace the existing concrete structure on Kamehameha Highway.

Bicycle and pedestrian facilities will be included when feasible.

**Mile Post/s:** Kamehameha Highway: MP 34.31 to MP 34.51

**Complete Streets (CS):**

**Project will implement:** Bicycle and pedestrian facilities will be included when feasible.

**Existing Feature/s:** No information available.

**Project Website:** None

**Neighborhood(s):** Kahaluu

**Estimated Total Project Cost:** \$17,465,000

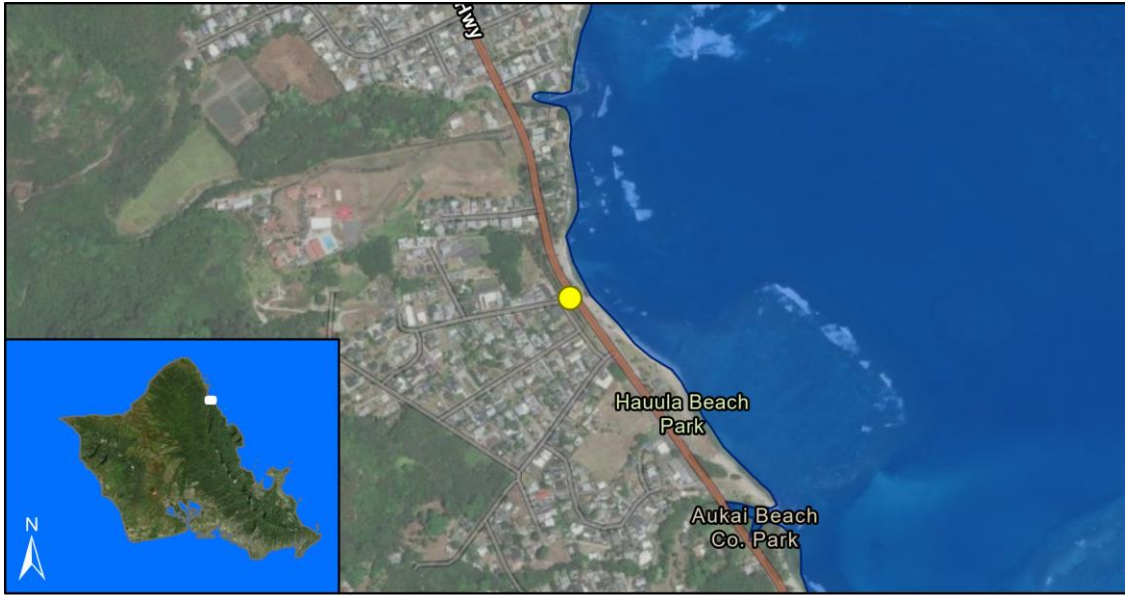
(May include project costs outside of the 4-year TIP and 2 informational years.)

**Project Sponsor:** State of Hawaii (FHWA Funded)

**Agency Responsible for Carrying Out Project/Phase:**  
Hawaii Department of Transportation

**FOR INFORMATION ONLY**

Phase	FFY 2022			FFY 2023			FFY 2024			FFY 2025			FFY 2026			FFY 2027			Funding Category
	Total (x\$1000)	Federal (x\$1000)	Local (x\$1000)	Total (x\$1000)	Federal (x\$1000)	Local (x\$1000)	Total (x\$1000)	Federal (x\$1000)	Local (x\$1000)	Total (x\$1000)	Federal (x\$1000)	Local (x\$1000)	Total (x\$1000)	Federal (x\$1000)	Local (x\$1000)	Total (x\$1000)	Federal (x\$1000)	Local (x\$1000)	
ROW	0	0	0	612	490	122	0	0	0	0	0	0	0	0	0	0	0	0	NHPP
CON	0	0	0	15,810	2,648	13,162	0	0	0	0	0	0	0	0	0	0	0	0	NHPP
ADVCON	0	0	0	0	0	0	0	5,000	-5,000	0	5,000	-5,000	0	0	0	0	0	0	NHPP
<b>Total</b>	<b>0</b>	<b>0</b>	<b>0</b>	<b>16,422</b>	<b>3,138</b>	<b>13,284</b>	<b>0</b>	<b>5,000</b>	<b>-5,000</b>	<b>0</b>	<b>5,000</b>	<b>-5,000</b>	<b>0</b>	<b>0</b>	<b>0</b>	<b>0</b>	<b>0</b>	<b>0</b>	



Source: Esri, Maxar, GeoEye, Earthstar Geographics, CNES/Airbus DS, USDA, USGS, AeroGRID, IGN, and the GIS User Community, Sources: Esri, HERE, Garmin, FAO, NOAA, USGS, © OpenStreetMap contributors, and the GIS User Community

**Project Description:**

Replace the existing concrete T-bridge on Kamehameha Highway in the vicinity of Hauula.

**Mile Post/s:** Kamehameha Highway: MP 21.12

**Complete Streets (CS):**

**Project will implement:** No information available. However, CS principles will be considered in all Highway Projects.

**Existing Feature/s:** No information available.

**Project Website:** None

**Neighborhood(s):** Koolauloa

**Estimated Total Project Cost:** \$12,300,000

(May include project costs outside of the 4-year TIP and 2 informational years.)

**Project Sponsor:** State of Hawaii (FHWA Funded)

**Agency Responsible for Carrying Out Project/Phase:**  
Hawaii Department of Transportation

**FOR INFORMATION ONLY**

Phase	FFY 2022			FFY 2023			FFY 2024			FFY 2025			FFY 2026			FFY 2027			Funding Category
	Total (x\$1000)	Federal (x\$1000)	Local (x\$1000)	Total (x\$1000)	Federal (x\$1000)	Local (x\$1000)	Total (x\$1000)	Federal (x\$1000)	Local (x\$1000)	Total (x\$1000)	Federal (x\$1000)	Local (x\$1000)	Total (x\$1000)	Federal (x\$1000)	Local (x\$1000)	Total (x\$1000)	Federal (x\$1000)	Local (x\$1000)	
ROW	0	0	0	1,000	800	200	0	0	0	0	0	0	0	0	0	0	0	0	NHPP
CON	0	0	0	10,000	5,000	5,000	0	0	0	0	0	0	0	0	0	0	0	0	NHPP
ADVCON	0	0	0	0	0	0	0	3,000	-3,000	0	0	0	0	0	0	0	0	0	NHPP
Total	0	0	0	11,000	5,800	5,200	0	3,000	-3,000	0	0	0	0	0	0	0	0	0	

**OS75 Kamehameha Highway (Route 83), Rockfall Protection, Waimea Bay**



Source: Esri, Maxar, GeoEye, Earthstar Geographics, CNES/Airbus DS, USDA, USGS, AeroGRID, IGN, and the GIS User Community, Sources: Esri, HERE, Garmin, FAO, NOAA, USGS, © OpenStreetMap contributors, and the GIS User Community

**Project Description:**

Construct various rockfall/slope protection and slope stabilization mitigation measures.

**Mile Post/s:** MP 5.40 to MP 5.52

**Complete Streets (CS):**

**Project will implement:** No information available. However, CS principles will be considered in all Highway Projects.

**Existing Feature/s:** No information available.

**Project Website:** None

**Neighborhood(s):** North Shore

**Estimated Total Project Cost:** \$35,450,000

(May include project costs outside of the 4-year TIP and 2 informational years.)

**Project Sponsor:** State of Hawaii (FHWA Funded)

**Agency Responsible for Carrying Out Project/Phase:**  
Hawaii Department of Transportation

**FOR INFORMATION ONLY**

Phase	FFY 2022			FFY 2023			FFY 2024			FFY 2025			FFY 2026			FFY 2027			Funding Category
	Total (x\$1000)	Federal (x\$1000)	Local (x\$1000)	Total (x\$1000)	Federal (x\$1000)	Local (x\$1000)	Total (x\$1000)	Federal (x\$1000)	Local (x\$1000)	Total (x\$1000)	Federal (x\$1000)	Local (x\$1000)	Total (x\$1000)	Federal (x\$1000)	Local (x\$1000)	Total (x\$1000)	Federal (x\$1000)	Local (x\$1000)	
Haleiwa																			
PE2	0	0	0	816	653	163	0	0	0	0	0	0	0	0	0	0	0	0	NHPP
CON	0	0	0	0	0	0	20,000	8,000	12,000	0	0	0	0	0	0	0	0	0	NHPP
ADVCON	0	0	0	0	0	0	0	0	0	0	4,000	-4,000	0	4,000	-4,000	0	0	0	NHPP
Sunset Beach																			
CON	0	0	0	0	0	0	8,000	3,000	5,000	0	0	0	0	0	0	0	0	0	NHPP
ADVCON	0	0	0	0	0	0	0	0	0	0	3,400	-3,400	0	0	0	0	0	0	NHPP
Waimea Bay																			
ROW	0	0	0	510	408	102	0	0	0	0	0	0	0	0	0	0	0	0	NHPP
Total	0	0	0	1,326	1,061	265	28,000	11,000	17,000	0	7,400	-7,400	0	4,000	-4,000	0	0	0	



# OS45 Moanalua Freeway (route H-201), Highway Lighting Improvements, Halawa Heights Off-Ramp to Middle Street Overpass



Source: Esri, Maxar, GeoEye, Earthstar Geographics, CNES/Airbus DS, USDA, USGS, AeroGRID, IGN, and the GIS User Community, Sources: Esri, HERE, Garmin, FAO, NOAA, USGS, © OpenStreetMap contributors, and the GIS User Community

## Project Description:

Upgrade/replace existing freeway lighting on Moanalua Freeway, from the Halawa Heights westbound off-ramp (milepost 1.12) to the Moanalua/H-1 Freeway merge at Middle Street (milepost 4.09).

**Mile Post/s:** Moanalua Freeway: MP 1.12 to MP 4.09

## Complete Streets (CS):

**Project will implement:** Not applicable

**Existing Feature/s:** Not applicable

**Project Website:** None

**Neighborhood(s):** Various Locations

**Estimated Total Project Cost:** \$22,000,000

(May include project costs outside of the 4-year TIP and 2 informational years.)

**Project Sponsor:** State of Hawaii (FHWA Funded)

## Agency Responsible for Carrying Out Project/Phase:

Hawaii Department of Transportation

## FOR INFORMATION ONLY

Phase	FFY 2022			FFY 2023			FFY 2024			FFY 2025			FFY 2026			FFY 2027			Funding Category
	Total (x\$1000)	Federal (x\$1000)	Local (x\$1000)	Total (x\$1000)	Federal (x\$1000)	Local (x\$1000)	Total (x\$1000)	Federal (x\$1000)	Local (x\$1000)	Total (x\$1000)	Federal (x\$1000)	Local (x\$1000)	Total (x\$1000)	Federal (x\$1000)	Local (x\$1000)	Total (x\$1000)	Federal (x\$1000)	Local (x\$1000)	
Phase 2																			
ADVCON	0	7,000	-7,000	0	6,000	-6,000	0	0	0	0	0	0	0	0	0	0	0	0	NHPP
Total	0	7,000	-7,000	0	6,000	-6,000	0	0	0	0	0	0	0	0	0	0	0	0	

**OS46      Moanalua Freeway (Route H-201), Highway Lighting Improvements, MP 0 to MP 0.73 (Halawa to H-3 Freeway Overpass)**



Source: Esri, Maxar, GeoEye, Earthstar Geographics, CNES/Airbus DS, USDA, USGS, AeroGRID, IGN, and the GIS User Community, Sources: Esri, HERE, Garmin, FAO, NOAA, USGS, © OpenStreetMap contributors, and the GIS User Community

**Project Description:**

Installation of new highway lighting system consist of new light poles and conduits, LED fixtures, trenching for conduits, conduits, foundations/barriers, power equipment, erosion control, and traffic control.

**Mile Post/s:**

**Complete Streets (CS):**

**Project will implement:** No information available. However, CS principles will be considered in all Highway Projects.

**Existing Feature/s:** No information available.

**Project Website:** None

**Neighborhood(s):** Aiea

**Estimated Total Project Cost:** \$9,500,000

*(May include project costs outside of the 4-year TIP and 2 informational years.)*

**Project Sponsor:** State of Hawaii (FHWA Funded)

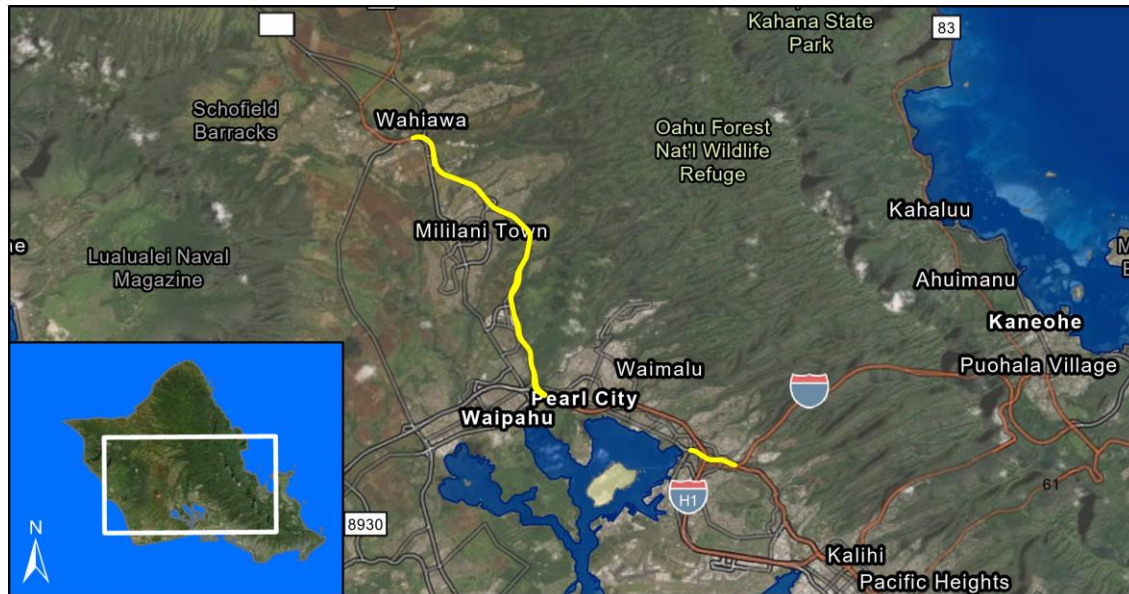
**Agency Responsible for Carrying Out Project/Phase:**

Hawaii Department of Transportation

**FOR INFORMATION ONLY**

Phase	FFY 2022			FFY 2023			FFY 2024			FFY 2025			FFY 2026			FFY 2027			Funding Category
	Total (x\$1000)	Federal (x\$1000)	Local (x\$1000)	Total (x\$1000)	Federal (x\$1000)	Local (x\$1000)	Total (x\$1000)	Federal (x\$1000)	Local (x\$1000)	Total (x\$1000)	Federal (x\$1000)	Local (x\$1000)	Total (x\$1000)	Federal (x\$1000)	Local (x\$1000)	Total (x\$1000)	Federal (x\$1000)	Local (x\$1000)	
ADVCON	0	7,000	-7,000	0	0	0	0	0	0	0	0	0	0	0	0	0	0	0	NHPP
Total	0	7,000	-7,000	0	0	0	0	0	0	0	0	0	0	0	0	0	0	0	

# OS44 Moanalua Freeway (Route 78) and Interstate Route H-2, Guardrail and Shoulder Improvements, Phase 2



Source: Esri, Maxar, GeoEye, Earthstar Geographics, CNES/Airbus DS, USDA, USGS, AeroGRID, IGN, and the GIS User Community, Sources: Esri, HERE, Garmin, FAO, NOAA, USGS, © OpenStreetMap contributors, and the GIS User Community

## Project Description:

Install and/or upgrade the existing guardrails. Reconstruct and pave road shoulders.

**Mile Post/s:** Moanalua Freeway: MP 0.00 to MP 0.74, H-2 Freeway: MP 0.00 to MP 8.33

## Complete Streets (CS):

**Project will implement:** Not applicable

**Existing Feature/s:** No information available.

**Project Website:** None

**Neighborhood(s):** Various Locations

**Estimated Total Project Cost:** \$23,000,000

(May include project costs outside of the 4-year TIP and 2 informational years.)

**Project Sponsor:** State of Hawaii (FHWA Funded)

**Agency Responsible for Carrying Out Project/Phase:**

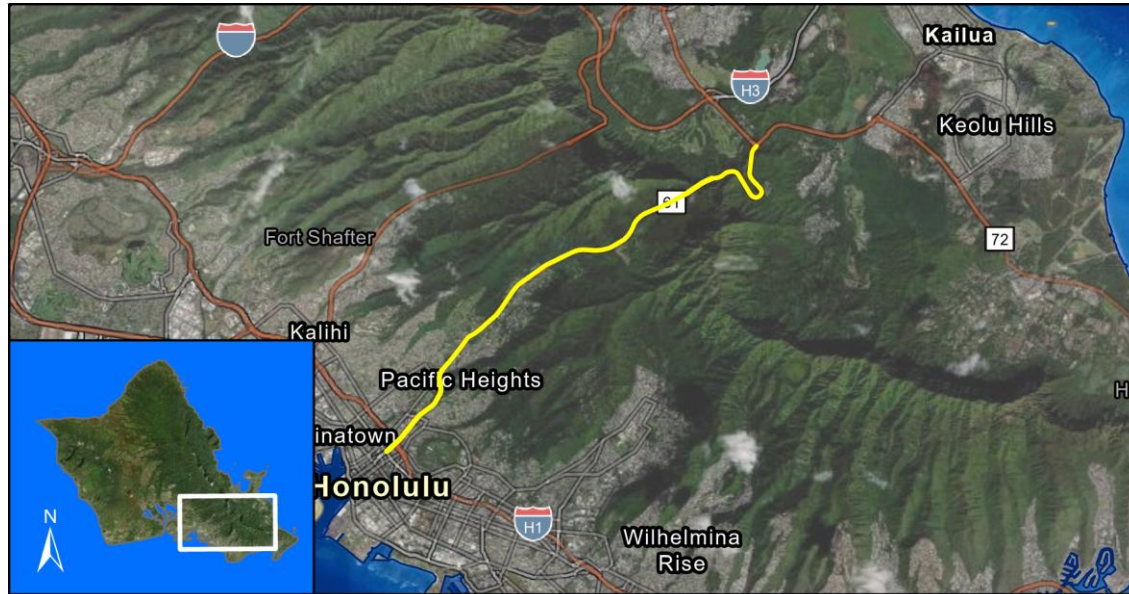
Hawaii Department of Transportation

## FOR INFORMATION ONLY

Phase	FFY 2022			FFY 2023			FFY 2024			FFY 2025			FFY 2026			FFY 2027			Funding Category
	Total (x\$1000)	Federal (x\$1000)	Local (x\$1000)	Total (x\$1000)	Federal (x\$1000)	Local (x\$1000)	Total (x\$1000)	Federal (x\$1000)	Local (x\$1000)	Total (x\$1000)	Federal (x\$1000)	Local (x\$1000)	Total (x\$1000)	Federal (x\$1000)	Local (x\$1000)	Total (x\$1000)	Federal (x\$1000)	Local (x\$1000)	
Phase 2																			
ADVCON	0	7,700	-7,700	0	0	0	0	0	0	0	0	0	0	0	0	0	0	0	NHPP
Total	0	7,700	-7,700	0	0	0	0	0	0	0	0	0	0	0	0	0	0	0	



**OS62 Pali Highway (Route 61) Resurfacing & Lighting Improvements, Vineyard Blvd (Route 98) Kamehameha Highway (Route 83)**



Source: Esri, Maxar, GeoEye, Earthstar Geographics, CNES/Airbus DS, USDA, USGS, AeroGRID, IGN, and the GIS User Community, Sources: Esri, HERE, Garmin, FAO, NOAA, USGS, © OpenStreetMap contributors, and the GIS User Community

**Project Description:**

Scope of work includes but is not limited to cold planing, resurfacing, reconstruction of weakened pavement, installation of new highway lighting, construction of concrete median barriers, replacement of guardrails in-kind and end treatments, installation of new guardrails, installing bridge rails, and installation of signs and pavement markings.

**Mile Post/s:**

**Complete Streets (CS):**

**Project will implement:** No information available. However, CS principles will be considered in all Highway Projects.

**Existing Feature/s:** No information available.

**Project Website:** None

**Neighborhood(s):** Nuuanu-Punchbowl

**Estimated Total Project Cost:** \$119,500,000

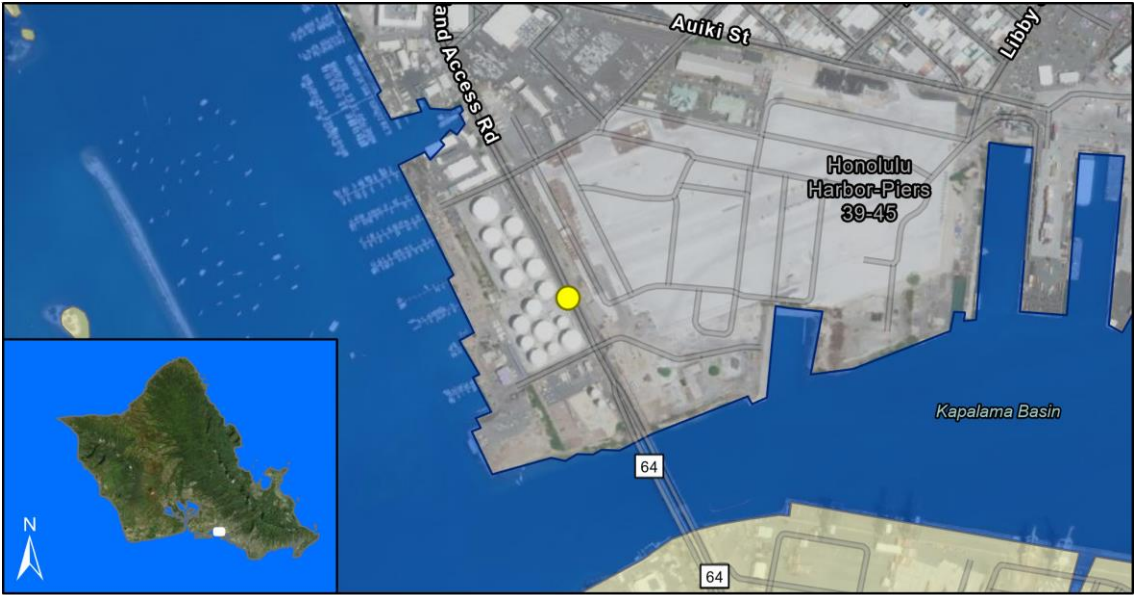
(May include project costs outside of the 4-year TIP and 2 informational years.)

**Project Sponsor:** State of Hawaii (FHWA Funded)

**Agency Responsible for Carrying Out Project/Phase:**  
Hawaii Department of Transportation

**FOR INFORMATION ONLY**

Phase	FFY 2022			FFY 2023			FFY 2024			FFY 2025			FFY 2026			FFY 2027			Funding Category
	Total (x\$1000)	Federal (x\$1000)	Local (x\$1000)	Total (x\$1000)	Federal (x\$1000)	Local (x\$1000)	Total (x\$1000)	Federal (x\$1000)	Local (x\$1000)	Total (x\$1000)	Federal (x\$1000)	Local (x\$1000)	Total (x\$1000)	Federal (x\$1000)	Local (x\$1000)	Total (x\$1000)	Federal (x\$1000)	Local (x\$1000)	
Phase 1 - Lighting Vineyard Blvd to Kamehameha Hwy & Resurf. Waokanaka St. to Kamehameha Hwy																			
ADVCON	0	2,150	-2,150	0	0	0	0	0	0	0	0	0	0	0	0	0	0	0	NHPP
Phase 2 - Resurfacing, Vineyard Blvd to Waokanaka St																			
ADVCON	0	7,000	-7,000	0	8,000	-8,000	0	12,000	-12,000	0	0	0	0	0	0	0	0	0	NHPP
Total	0	9,150	-9,150	0	8,000	-8,000	0	12,000	-12,000	0	0	0	0	0	0	0	0	0	



Source: Esri, Maxar, GeoEye, Earthstar Geographics, CNES/Airbus DS, USDA, USGS, AeroGRID, IGN, and the GIS User Community, Sources: Esri, HERE, Garmin, FAO, NOAA, USGS, © OpenStreetMap contributors, and the GIS User Community

**Project Description:**  
 The description of work would be to design, construct and operate a truck weigh station to perform truck inspections and driver credential checks at the egress of the container terminal on Sand Island Access Road. The work includes auxiliary lanes to accommodate truck vehicles, traffic controls, truck weighing infrastructure and computer hardware/ software, operator kiosk/

**Mile Post/s:**

**Complete Streets (CS):**  
**Project will implement:** No information available. However, CS principles will be considered in all Highway Projects.

**Existing Feature/s:** No information available.

**Project Website:** None

**Neighborhood(s):** Kalihi-Palama

**Estimated Total Project Cost:** \$11,000,000  
*(May include project costs outside of the 4-year TIP and 2 informational years.)*

**Project Sponsor:** State of Hawaii (FHWA Funded)

**Agency Responsible for Carrying Out Project/Phase:**  
 Hawaii Department of Transportation

Phase	FOR INFORMATION ONLY																		Funding Category
	FFY 2022			FFY 2023			FFY 2024			FFY 2025			FFY 2026			FFY 2027			
	Total	Federal	Local	Total	Federal	Local	Total	Federal	Local	Total	Federal	Local	Total	Federal	Local	Total	Federal	Local	
	(x\$1000)	(x\$1000)	(x\$1000)	(x\$1000)	(x\$1000)	(x\$1000)	(x\$1000)	(x\$1000)	(x\$1000)	(x\$1000)	(x\$1000)	(x\$1000)	(x\$1000)	(x\$1000)	(x\$1000)	(x\$1000)	(x\$1000)	(x\$1000)	
ADVCON	0	3,000	-3,000	0	0	0	0	0	0	0	0	0	0	0	0	0	0	0	NHPP
Total	0	3,000	-3,000	0	0	0	0	0	0	0	0	0	0	0	0	0	0	0	





Source: Esri, Maxar, GeoEye, Earthstar Geographics, CNES/Airbus DS, USDA, USGS, AeroGRID, IGN, and the GIS User Community

**Project Description:**

Develop and construct shoreline protection measures to better protect roadways from flooding and erosion as identified and prioritized in the Statewide Shoreline Protection Program. This funding is for the Oahu District Sub-Program.

**Mile Post/s:** Not applicable

**Complete Streets (CS):**

**Project will implement:** Not applicable

**Existing Feature/s:** Not applicable

**Project Website:** None

**Neighborhood(s):** Various Locations

**Estimated Total Project Cost:** \$70,000,000

(May include project costs outside of the 4-year TIP and 2 informational years.)

**Project Sponsor:** State of Hawaii (FHWA Funded)

**Agency Responsible for Carrying Out Project/Phase:**  
Department of Land and Natural Resources

**FOR INFORMATION ONLY**

Phase	FFY 2022			FFY 2023			FFY 2024			FFY 2025			FFY 2026			FFY 2027			Funding Category
	Total (x\$1000)	Federal (x\$1000)	Local (x\$1000)	Total (x\$1000)	Federal (x\$1000)	Local (x\$1000)	Total (x\$1000)	Federal (x\$1000)	Local (x\$1000)	Total (x\$1000)	Federal (x\$1000)	Local (x\$1000)	Total (x\$1000)	Federal (x\$1000)	Local (x\$1000)	Total (x\$1000)	Federal (x\$1000)	Local (x\$1000)	
Priority 1 - (Short-Term) Kamehameha Hwy, Phase 2																			
ROW	0	0	0	0	0	0	500	400	100	0	0	0	0	0	0	0	0	0	NHPP
CON	0	0	0	0	0	0	0	0	0	20,000	11,000	9,000	0	0	0	0	0	0	NHPP
ADVCON	0	0	0	0	0	0	0	0	0	0	0	0	0	5,000	-5,000	0	0	0	NHPP
Priority 1 - (Short-Term) Kamehameha Hwy, Phase 1																			
ROW	0	0	0	1,020	816	204	0	0	0	0	0	0	0	0	0	0	0	0	NHPP
CON	0	0	0	0	0	0	20,400	2,320	18,080	0	0	0	0	0	0	0	0	0	NHPP
ADVCON	0	0	0	0	0	0	0	0	0	0	11,000	-11,000	0	3,000	-3,000	0	0	0	NHPP
Priority 2 - (Mid/Long-Term) Farrington Hwy, Keaau																			
PE1	0	0	0	540	432	108	0	0	0	0	0	0	0	0	0	0	0	0	NHPP
PE2	0	0	0	0	0	0	0	0	0	360	288	72	0	0	0	0	0	0	NHPP
ROW	0	0	0	0	0	0	0	0	0	50	40	10	0	0	0	0	0	0	NHPP
CON	0	0	0	0	0	0	0	0	0	0	0	0	0	0	0	6,000	4,800	1,200	NHPP
Priority 2 - (Mid/Long-Term) Kalaniana'ole Hwy, Bell																			
PE1	0	0	0	1,000	800	200	0	0	0	0	0	0	0	0	0	0	0	0	NHPP

**OS79 Shoreline Protection/Mitigation Program**

													FOR INFORMATION ONLY						Funding Category
FFY 2022			FFY 2023			FFY 2024			FFY 2025			FFY 2026			FFY 2027				
Phase	Total (x\$1000)	Federal (x\$1000)	Local (x\$1000)	Total (x\$1000)	Federal (x\$1000)	Local (x\$1000)	Total (x\$1000)	Federal (x\$1000)	Local (x\$1000)	Total (x\$1000)	Federal (x\$1000)	Local (x\$1000)	Total (x\$1000)	Federal (x\$1000)	Local (x\$1000)	Total (x\$1000)	Federal (x\$1000)	Local (x\$1000)	
Priority 2 - (Mid/Long-Term) Kalanianaʻole Hwy, Bell																			
PE2	0	0	0	0	0	0	0	0	0	500	400	100	0	0	0	0	0	0	NHPP
ROW	0	0	0	0	0	0	0	0	0	50	40	10	0	0	0	0	0	0	NHPP
CON	0	0	0	0	0	0	0	0	0	0	0	0	0	0	0	8,500	6,800	1,700	NHPP
Priority 2 - (Mid/Long-Term) Kalanianaʻole Hwy, Kaupo																			
PE1	0	0	0	1,000	800	200	0	0	0	0	0	0	0	0	0	0	0	0	NHPP
PE2	0	0	0	0	0	0	0	0	0	500	400	100	0	0	0	0	0	0	NHPP
ROW	0	0	0	0	0	0	0	0	0	50	40	10	0	0	0	0	0	0	NHPP
CON	0	0	0	0	0	0	0	0	0	0	0	0	0	0	0	8,500	6,800	1,700	NHPP
Total	0	0	0	3,560	2,848	712	20,900	2,720	18,180	21,510	23,208	-1,698	0	8,000	-8,000	23,000	18,400	4,600	



Source: Esri, Maxar, GeoEye, Earthstar Geographics, CNES/Airbus DS, USDA, USGS, AeroGRID, IGN, and the GIS User Community

**Project Description:**

Construction of traffic counting stations for traffic data gathering and planning purposes. There is a separate phase shown for the rest of the islands in Statewide section of the STIP. This is a part of phase 2 of the Statewide project. The project will collect required Highway Performance Monitoring System (HPMS) data.

**Mile Post/s:**

**Complete Streets (CS):**

**Project will implement:** Not applicable

**Existing Feature/s:** Not applicable

**Project Website:** None

**Neighborhood(s):** Various Locations

**Estimated Total Project Cost:** \$4,500,000

(May include project costs outside of the 4-year TIP and 2 informational years.)

**Project Sponsor:** State of Hawaii (FHWA Funded)

**Agency Responsible for Carrying Out Project/Phase:**

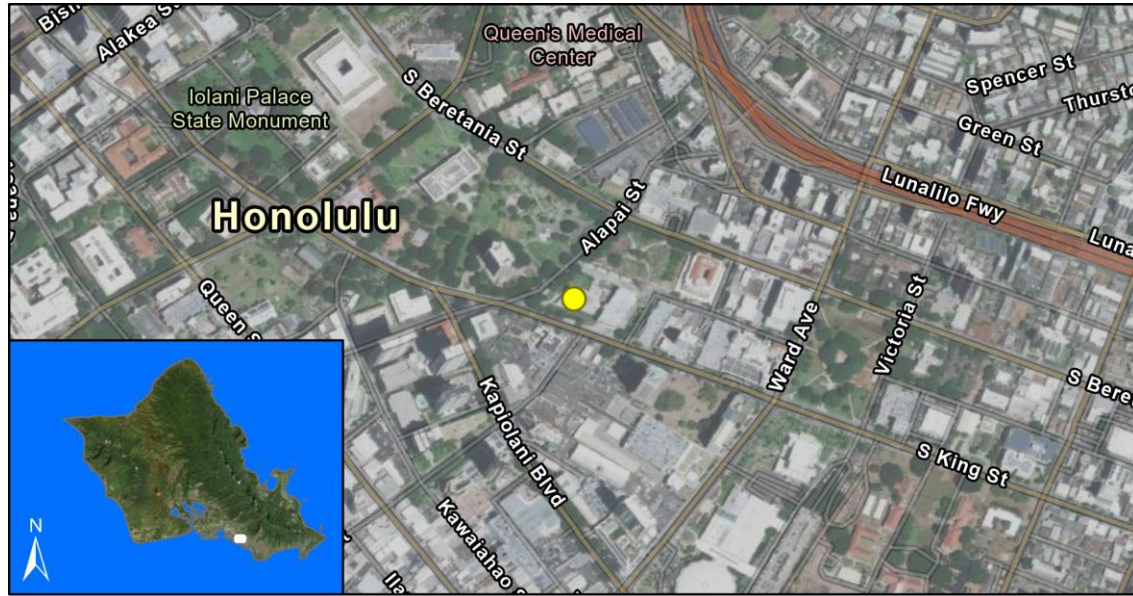
Hawaii Department of Transportation

**FOR INFORMATION ONLY**

Phase	FFY 2022			FFY 2023			FFY 2024			FFY 2025			FFY 2026			FFY 2027			Funding Category
	Total (x\$1000)	Federal (x\$1000)	Local (x\$1000)	Total (x\$1000)	Federal (x\$1000)	Local (x\$1000)	Total (x\$1000)	Federal (x\$1000)	Local (x\$1000)	Total (x\$1000)	Federal (x\$1000)	Local (x\$1000)	Total (x\$1000)	Federal (x\$1000)	Local (x\$1000)	Total (x\$1000)	Federal (x\$1000)	Local (x\$1000)	
CON	0	0	0	2,754	203	2,551	0	0	0	0	0	0	0	0	0	0	0	0	STBG
ADVCON	0	0	0	0	0	0	0	2,000	-2,000	0	0	0	0	0	0	0	0	0	STBG
Total	0	0	0	2,754	203	2,551	0	2,000	-2,000	0	0	0	0	0	0	0	0	0	

# **FHWA-Funded Projects**

## **O'ahu City (OC) Projects**



Source: Esri, Maxar, GeoEye, Earthstar Geographics, CNES/Airbus DS, USDA, USGS, AeroGRID, IGN, and the GIS User Community, Sources: Esri, HERE, Garmin, FAO, NOAA, USGS, © OpenStreetMap contributors, and the GIS User Community

**Project Description:**

Operations and management for the joint communications center behind the Alapai Transit Center which holds City, State & emergency response agencies.

**Mile Post/s:** Not applicable

**Complete Streets (CS):**

**Project will implement:** Not applicable

**Existing Feature/s:** Not applicable

**Project Website:** None

**Neighborhood(s):** Ala Moana-Kakaako

**Estimated Total Project Cost:** \$1,889,000

(May include project costs outside of the 4-year TIP and 2 informational years.)

**Project Sponsor:** City and County of Honolulu

**Agency Responsible for Carrying Out Project/Phase:**

City Department of Transportation Services

**FOR INFORMATION ONLY**

Phase	FFY 2022			FFY 2023			FFY 2024			FFY 2025			FFY 2026			FFY 2027			Funding Category
	Total (x\$1000)	Federal (x\$1000)	Local (x\$1000)	Total (x\$1000)	Federal (x\$1000)	Local (x\$1000)	Total (x\$1000)	Federal (x\$1000)	Local (x\$1000)	Total (x\$1000)	Federal (x\$1000)	Local (x\$1000)	Total (x\$1000)	Federal (x\$1000)	Local (x\$1000)	Total (x\$1000)	Federal (x\$1000)	Local (x\$1000)	
OPR	238	190	48	263	210	53	300	240	60	338	270	68	375	300	75	375	300	75	STBG
Total	238	190	48	263	210	53	300	240	60	338	270	68	375	300	75	375	300	75	



Source: Esri, Maxar, GeoEye, Earthstar Geographics, CNES/Airbus DS, USDA, USGS, AeroGRID, IGN, and the GIS User Community

#### Project Description:

This is an ongoing islandwide program for the implementation of the Oahu Bicycle Master Plan improvements, the development of new projects, and the upgrade of existing bicycle projects.

#### Mile Post/s:

#### Complete Streets (CS):

**Project will implement:** Bikeway improvements; new bikeway projects; and bikeway upgrades.

**Existing Feature/s:** See Oahu Bicycle Master Plan

**Project Website:** <https://www.honolulu.gov/bicycle/bikeplanupdate.html>

**Neighborhood(s):** Islandwide

**Estimated Total Project Cost:** \$3,301,000

(May include project costs outside of the 4-year TIP and 2 informational years.)

**Project Sponsor:** City and County of Honolulu

#### Agency Responsible for Carrying Out Project/Phase:

City Department of Transportation Services

#### FOR INFORMATION ONLY

Phase	FFY 2022			FFY 2023			FFY 2024			FFY 2025			FFY 2026			FFY 2027			Funding Category
	Total (x\$1000)	Federal (x\$1000)	Local (x\$1000)	Total (x\$1000)	Federal (x\$1000)	Local (x\$1000)	Total (x\$1000)	Federal (x\$1000)	Local (x\$1000)	Total (x\$1000)	Federal (x\$1000)	Local (x\$1000)	Total (x\$1000)	Federal (x\$1000)	Local (x\$1000)	Total (x\$1000)	Federal (x\$1000)	Local (x\$1000)	
Kailua-Lanikai Bike Path																			
PE1	500	400	100	0	0	0	0	0	0	0	0	0	0	0	0	0	0	0	STBG
PE2	0	0	0	0	0	0	200	160	40	0	0	0	0	0	0	0	0	0	STBG
ROW	1	0	1	0	0	0	0	0	0	0	0	0	0	0	0	0	0	0	Local Only
CON	0	0	0	0	0	0	0	0	0	1,000	800	200	0	0	0	0	0	0	STBG
INSP	0	0	0	0	0	0	0	0	0	250	200	50	0	0	0	0	0	0	STBG
Waipahu Depot Shared Use Path																			
PE2	0	0	0	100	80	20	0	0	0	0	0	0	0	0	0	0	0	0	STBG
CON	0	0	0	0	0	0	1,000	800	200	0	0	0	0	0	0	0	0	0	STBG
INSP	0	0	0	0	0	0	250	200	50	0	0	0	0	0	0	0	0	0	STBG
Total	501	400	101	100	80	20	1,450	1,160	290	1,250	1,000	250	0	0	0	0	0	0	





Source: Esri, Maxar, GeoEye, Earthstar Geographics, CNES/Airbus DS, USDA, USGS, AeroGRID, IGN, and the GIS User Community

**Project Description:**  
 Inventory, inspect, and appraise City bridges, including underwater inspection and scour survey.

**Mile Post/s:**      Not applicable

**Complete Streets (CS):**  

**Project will implement:** No information available. However, CS principles will be considered in all Highway Projects.

**Existing Feature/s:**      No information available.

**Project Website:** None

**Neighborhood(s):**   Various Locations

**Estimated Total Project Cost:**   \$18,493,000  
*(May include project costs outside of the 4-year TIP and 2 informational years.)*

**Project Sponsor:**   City and County of Honolulu

**Agency Responsible for Carrying Out Project/Phase:**  
 City Department of Design and Construction

Phase	FOR INFORMATION ONLY																		Funding Category
	FFY 2022			FFY 2023			FFY 2024			FFY 2025			FFY 2026			FFY 2027			
	Total	Federal	Local	Total	Federal	Local	Total	Federal	Local	Total	Federal	Local	Total	Federal	Local	Total	Federal	Local	
	(x\$1000)	(x\$1000)	(x\$1000)	(x\$1000)	(x\$1000)	(x\$1000)	(x\$1000)	(x\$1000)	(x\$1000)	(x\$1000)	(x\$1000)	(x\$1000)	(x\$1000)	(x\$1000)	(x\$1000)	(x\$1000)	(x\$1000)	(x\$1000)	
DES	1,780	1,200	580	3,640	2,400	1,240	2,913	1,952	961	2,880	1,930	950	3,640	2,400	1,240	3,640	2,400	1,240	OS BRIDGE
Total	1,780	1,200	580	3,640	2,400	1,240	2,913	1,952	961	2,880	1,930	950	3,640	2,400	1,240	3,640	2,400	1,240	



Source: Esri, Maxar, GeoEye, Earthstar Geographics, CNES/Airbus DS, USDA, USGS, AeroGRID, IGN, and the GIS User Community

**Project Description:**

Upgrade and expand fiber optic lines, CCTV cameras, data collection, and signal control in urban and rural areas for connection to the Traffic Control Center.

**Mile Post/s:****Complete Streets (CS):**

Project will implement: NA

Existing Feature/s: NA

Project Website: None

Neighborhood(s): Islandwide

Estimated Total Project Cost: \$8,861,000

(May include project costs outside of the 4-year TIP and 2 informational years.)

Project Sponsor: City and County of Honolulu

**Agency Responsible for Carrying Out Project/Phase:**

City Department of Transportation Services

**FOR INFORMATION ONLY**

Phase	FFY 2022			FFY 2023			FFY 2024			FFY 2025			FFY 2026			FFY 2027			Funding Category
	Total (x\$1000)	Federal (x\$1000)	Local (x\$1000)	Total (x\$1000)	Federal (x\$1000)	Local (x\$1000)	Total (x\$1000)	Federal (x\$1000)	Local (x\$1000)	Total (x\$1000)	Federal (x\$1000)	Local (x\$1000)	Total (x\$1000)	Federal (x\$1000)	Local (x\$1000)	Total (x\$1000)	Federal (x\$1000)	Local (x\$1000)	
Phase 16 Waianae																			
PE2	0	0	0	330	264	66	0	0	0	0	0	0	0	0	0	0	0	0	STBG
CON	0	0	0	0	0	0	3,205	2,564	641	0	0	0	0	0	0	0	0	0	STBG
INSP	0	0	0	0	0	0	100	0	100	0	0	0	0	0	0	0	0	0	STBG
Phase 17 Maili																			
PE1	275	220	55	0	0	0	0	0	0	0	0	0	0	0	0	0	0	0	STBG
PE2	0	0	0	200	160	40	0	0	0	0	0	0	0	0	0	0	0	0	STBG
CON	0	0	0	0	0	0	0	0	0	0	0	0	3,751	3,000	751	0	0	0	STBG
INSP	0	0	0	0	0	0	0	0	0	0	0	0	1,000	800	200	0	0	0	STBG
Total	275	220	55	530	424	106	3,305	2,564	741	0	0	0	4,751	3,800	951	0	0	0	





Source: Esri, Maxar, GeoEye, Earthstar Geographics, CNES/Airbus DS, USDA, USGS, AeroGRID, IGN, and the GIS User Community

#### Project Description:

Provide traffic congestion relief and improve traffic safety at various locations, including but not limited to Mahoe/Waipahu Streets and Manager's Drive/Hiapo Street Intersection.

**Mile Post/s:** Not applicable

#### Complete Streets (CS):

**Project will implement:** Project will incorporate complete streets features for pedestrian use.

**Existing Feature/s:** No information available

**Project Website:** None

**Neighborhood(s):** Various Locations

**Estimated Total Project Cost:** \$7,919,000

(May include project costs outside of the 4-year TIP and 2 informational years.)

**Project Sponsor:** City and County of Honolulu

#### Agency Responsible for Carrying Out Project/Phase:

City Department of Transportation Services

#### FOR INFORMATION ONLY

Phase	FFY 2022			FFY 2023			FFY 2024			FFY 2025			FFY 2026			FFY 2027			Funding Category
	Total (x\$1000)	Federal (x\$1000)	Local (x\$1000)	Total (x\$1000)	Federal (x\$1000)	Local (x\$1000)	Total (x\$1000)	Federal (x\$1000)	Local (x\$1000)	Total (x\$1000)	Federal (x\$1000)	Local (x\$1000)	Total (x\$1000)	Federal (x\$1000)	Local (x\$1000)	Total (x\$1000)	Federal (x\$1000)	Local (x\$1000)	
Mahoe and Waipahu Streets																			
PE2	0	0	0	0	0	0	0	0	0	0	0	0	0	0	0	0	0	0	STBG
CON	0	0	0	3,500	2,800	700	0	0	0	0	0	0	0	0	0	0	0	0	STBG
INSP	0	0	0	800	640	160	0	0	0	0	0	0	0	0	0	0	0	0	STBG
Manager's Drive/Hiapo Street Intersection Improvements																			
PE1	300	240	60	0	0	0	0	0	0	0	0	0	0	0	0	0	0	0	STBG
PE2	0	0	0	0	0	0	156	125	31	0	0	0	0	0	0	0	0	0	STBG
CON	0	0	0	0	0	0	0	0	0	2,413	1,930	483	0	0	0	0	0	0	STBG
INSP	0	0	0	0	0	0	0	0	0	750	600	150	0	0	0	0	0	0	STBG
Total	300	240	60	4,300	3,440	860	156	125	31	3,163	2,530	633	0	0	0	0	0	0	



Source: Esri, Maxar, GeoEye, Earthstar Geographics, CNES/Airbus DS, USDA, USGS, AeroGRID, IGN, and the GIS User Community

**Project Description:**

Install and upgrade traffic signals island-wide including ADA improvements, signs and markings, and interties.

**Mile Post/s:** Not applicable

**Complete Streets (CS):**

**Project will implement:** Not applicable

**Existing Feature/s:** Not applicable

**Project Website:** None

**Neighborhood(s):** Various Locations

**Estimated Total Project Cost:** \$17,018,000

(May include project costs outside of the 4-year TIP and 2 informational years.)

**Project Sponsor:** City and County of Honolulu

**Agency Responsible for Carrying Out Project/Phase:**

City Department of Transportation Services

**FOR INFORMATION ONLY**

Phase	FFY 2022			FFY 2023			FFY 2024			FFY 2025			FFY 2026			FFY 2027			Funding Category
	Total (x\$1000)	Federal (x\$1000)	Local (x\$1000)	Total (x\$1000)	Federal (x\$1000)	Local (x\$1000)	Total (x\$1000)	Federal (x\$1000)	Local (x\$1000)	Total (x\$1000)	Federal (x\$1000)	Local (x\$1000)	Total (x\$1000)	Federal (x\$1000)	Local (x\$1000)	Total (x\$1000)	Federal (x\$1000)	Local (x\$1000)	
Phase 17 - Kuulei Rd/Aulike St, Kamehameha Hwy/Haiku Rd, King St/Church Ln, Ahua St/Kilihau St, Kuala St/Acacia Rd, King St/Pensacola St, Kamehameha Hwy/Pahia Rd, King St/Ward Ave, Atkinson Dr/Mahukona																			
CON	3,910	3,114	796	0	0	0	0	0	0	0	0	0	0	0	0	0	0	0	STBG
INSP	4	0	4	0	0	0	0	0	0	0	0	0	0	0	0	0	0	0	STBG
Phase 18 - Renton Rd/Pahika St, Kapiolani at Pumehana St (Rapid Flashing Beacons), School St/Houghtailing St, Kapiolani Blvd/Atkinson Dr, Kapiolani Blvd/Kalakaua Ave, Moanalua Rd/Hoomalu St																			
PE2	626	501	125	0	0	0	0	0	0	0	0	0	0	0	0	0	0	0	STBG
CON	1,700	1,700	0	0	0	0	0	0	0	0	0	0	0	0	0	0	0	0	STBG
EQP	5	0	5	0	0	0	0	0	0	0	0	0	0	0	0	0	0	0	STBG
INSP	153	122	31	0	0	0	0	0	0	0	0	0	0	0	0	0	0	0	STBG
Phase 19 - Waialae Avenue at 16th Avenue, Moanalua Road at Ualo Street																			
PE2	0	0	0	0	0	0	688	550	138	0	0	0	0	0	0	0	0	0	STBG
CON	0	0	0	0	0	0	0	0	0	0	0	0	1,734	1,734	0	0	0	0	STBG
EQP	0	0	0	0	0	0	0	0	0	0	0	0	1	0	1	0	0	0	STBG
INSP	0	0	0	0	0	0	0	0	0	0	0	0	957	765	192	0	0	0	STBG
Phase 20 -King St/Punahou St, Makuahine/Hala Dr, Hawaii Kai/Kalalea, Kamehameha Hwy/Waikalua Rd, Ward Ave/Lunalilo, Kapahulu Interconnect																			
PE1	0	0	0	484	387	97	0	0	0	0	0	0	0	0	0	0	0	0	STBG

**OC10 Traffic Signals at Various Locations**

													FOR INFORMATION ONLY						Funding Category
FFY 2022			FFY 2023			FFY 2024			FFY 2025			FFY 2026			FFY 2027				
Phase	Total (x\$1000)	Federal (x\$1000)	Local (x\$1000)	Total (x\$1000)	Federal (x\$1000)	Local (x\$1000)	Total (x\$1000)	Federal (x\$1000)	Local (x\$1000)	Total (x\$1000)	Federal (x\$1000)	Local (x\$1000)	Total (x\$1000)	Federal (x\$1000)	Local (x\$1000)	Total (x\$1000)	Federal (x\$1000)	Local (x\$1000)	
Phase 20 -King St/Punahou St, Makuahine/Hala Dr, Hawaii Kai/Kalalea, Kamehameha Hwy/Waikalua Rd, Ward Ave/Lunalilo, Kapahulu Interconnect																			
PE2	0	0	0	0	0	0	0	0	0	688	550	138	0	0	0	0	0	0	STBG
CON	0	0	0	0	0	0	0	0	0	0	0	0	1,700	1,700	0	0	0	0	STBG
EQP	0	0	0	0	0	0	0	0	0	0	0	0	1	0	1	0	0	0	STBG
INSP	0	0	0	0	0	0	0	0	0	0	0	0	938	750	188	0	0	0	STBG
Phase 21 - Meahaula Pkwy/Ainamakua Dr (audio Ped), Kapiolani/Ward, Kapiolani/McCully																			
PE1	0	0	0	325	260	65	0	0	0	0	0	0	0	0	0	0	0	0	STBG
PE2	0	0	0	0	0	0	465	372	93	0	0	0	0	0	0	0	0	0	STBG
CON	0	0	0	0	0	0	0	0	0	0	0	0	1,700	1,700	0	0	0	0	STBG
EQP	0	0	0	0	0	0	0	0	0	0	0	0	1	0	1	0	0	0	STBG
INSP	0	0	0	0	0	0	0	0	0	0	0	0	938	750	188	0	0	0	STBG
Total	6,398	5,437	961	809	647	162	1,153	922	231	688	550	138	7,970	7,399	571	0	0	0	

## OC-21-54 Kalaeloa Boulevard Railroad Improvements



Source: Esri, Maxar, GeoEye, Earthstar Geographics, CNES/Airbus DS, USDA, USGS, AeroGRID, IGN, and the GIS User Community, Sources: Esri, HERE, Garmin, FAO, NOAA, USGS, © OpenStreetMap contributors, and the GIS User Community

### Project Description:

Design and install a Railroad traffic signal (and traffic camera) located at Kalaeloa Boulevard and Railroad Crossing.

### Mile Post/s:

### Complete Streets (CS):

**Project will implement:** Controlled pedestrian crossing will be installed as part of the project.

**Existing Feature/s:** Existing bicycle lanes will be preserved. Control of bicycles crossing the railroad tracks will be included in project

**Project Website:** None

**Neighborhood(s):** Makakilo-Kapolei-Honokai Hale

**Estimated Total Project Cost:** \$805,000

*(May include project costs outside of the 4-year TIP and 2 informational years.)*

**Project Sponsor:** State of Hawaii (FHWA Funded)

### Agency Responsible for Carrying Out Project/Phase:

City Department of Transportation Services and Hawaii Department of Transportation

### FOR INFORMATION ONLY

Phase	FFY 2022			FFY 2023			FFY 2024			FFY 2025			FFY 2026			FFY 2027			Funding Category
	Total (x\$1000)	Federal (x\$1000)	Local (x\$1000)	Total (x\$1000)	Federal (x\$1000)	Local (x\$1000)	Total (x\$1000)	Federal (x\$1000)	Local (x\$1000)	Total (x\$1000)	Federal (x\$1000)	Local (x\$1000)	Total (x\$1000)	Federal (x\$1000)	Local (x\$1000)	Total (x\$1000)	Federal (x\$1000)	Local (x\$1000)	
PE2	0	0	0	35	30	5	0	0	0	0	0	0	0	0	0	0	0	0	HSIP
CON	0	0	0	0	0	0	500	400	100	0	0	0	0	0	0	0	0	0	HSIP
INSP	0	0	0	0	0	0	120	96	24	0	0	0	0	0	0	0	0	0	HSIP
Total	0	0	0	35	30	5	620	496	124	0	0	0	0	0	0	0	0	0	





Source: Esri, Maxar, GeoEye, Earthstar Geographics, CNES/Airbus DS, USDA, USGS, AeroGRID, IGN, and the GIS User Community, Sources: Esri, HERE, Garmin, FAO, NOAA, USGS, © OpenStreetMap contributors, and the GIS User Community

**Project Description:**

To widen the Salt Lake Boulevard to a multi-lane roadway within the existing 100' right-of-way between Maluna and Ala Lilikoi Streets.

**Mile Post/s:**

**Complete Streets (CS):**

**Project will implement:** No information available. However, CS principles will be considered in all Highway Projects.

**Existing Feature/s:** No information available.

**Project Website:** None

**Neighborhood(s):** Aliamanu-Salt Lake-Foster Village

**Estimated Total Project Cost:** \$80,000,000

(May include project costs outside of the 4-year TIP and 2 informational years.)

**Project Sponsor:** City and County of Honolulu

**Agency Responsible for Carrying Out Project/Phase:**

City Department of Design and Construction

**FOR INFORMATION ONLY**

Phase	FFY 2022			FFY 2023			FFY 2024			FFY 2025			FFY 2026			FFY 2027			Funding Category
	Total (x\$1000)	Federal (x\$1000)	Local (x\$1000)	Total (x\$1000)	Federal (x\$1000)	Local (x\$1000)	Total (x\$1000)	Federal (x\$1000)	Local (x\$1000)	Total (x\$1000)	Federal (x\$1000)	Local (x\$1000)	Total (x\$1000)	Federal (x\$1000)	Local (x\$1000)	Total (x\$1000)	Federal (x\$1000)	Local (x\$1000)	
PE2	10	0	10	10	0	10	0	0	0	0	0	0	10	0	10	10	0	10	Local Only
ROW	10	0	10	10	0	10	0	0	0	0	0	0	0	0	0	0	0	0	Local Only
CON	30,000	0	30,000	2,010	0	2,010	0	0	0	0	0	0	39	0	39	0	0	0	Local Only
INSP	0	0	0	0	0	0	0	0	0	0	0	0	0	0	0	0	0	0	Local Only
<b>Total</b>	<b>30,020</b>	<b>0</b>	<b>30,020</b>	<b>2,030</b>	<b>0</b>	<b>2,030</b>	<b>0</b>	<b>0</b>	<b>0</b>	<b>0</b>	<b>0</b>	<b>0</b>	<b>49</b>	<b>0</b>	<b>49</b>	<b>10</b>	<b>0</b>	<b>10</b>	



Source: Esri, Maxar, GeoEye, Earthstar Geographics, CNES/Airbus DS, USDA, USGS, AeroGRID, IGN, and the GIS User Community

**Project Description:**

The Transportation Alternatives Set-Aside Program (TA Set-Aside) is a competitive grant program that provides funding for programs and projects defined as transportation alternatives, including on- and off-road pedestrian and bicycle facilities, infrastructure projects for improving non-driver access to public transportation and enhanced mobility, and community improvement activities. Locations to be determined by the OahuMPO TAP Project Evaluation and Ranking process. HART projects may be flexed from FHWA to FTA. The Ala Wai Bridge project is a new pedestrian and bicycle bridge crossing the Ala Wai Canal in the University Ave/Kalaimoku Street alignment.

**Mile Post/s:**

**Complete Streets (CS):**

**Project will implement:** Ala Wai Bridge will be a new pedestrian and bicycle bridge crossing the Ala Wai Canal, connecting Waikiki and McCully-Moiliili neighborhoods.

**Existing Feature/s:** No information available.

**Project Website:** <https://www.oahumpo.org/plans-and-programs/transportation-alternatives-ta-set-aside/>

**Neighborhood(s):** McCully-Moiliili, Various Locations

**Estimated Total Project Cost:** \$46,600,000

(May include project costs outside of the 4-year TIP and 2 informational years.)

**Project Sponsor:** City and County of Honolulu

**Agency Responsible for Carrying Out Project/Phase:**

City Department of Transportation Services

**FOR INFORMATION ONLY**

Phase	FFY 2022			FFY 2023			FFY 2024			FFY 2025			FFY 2026			FFY 2027			Funding Category
	Total (x\$1000)	Federal (x\$1000)	Local (x\$1000)	Total (x\$1000)	Federal (x\$1000)	Local (x\$1000)	Total (x\$1000)	Federal (x\$1000)	Local (x\$1000)	Total (x\$1000)	Federal (x\$1000)	Local (x\$1000)	Total (x\$1000)	Federal (x\$1000)	Local (x\$1000)	Total (x\$1000)	Federal (x\$1000)	Local (x\$1000)	
Phase 3 - Ala Wai Bridge Project																			
PE2	1,390	1,112	278	0	0	0	0	0	0	0	0	0	0	0	0	0	0	0	STBG
PE2	1,250	1,000	250	0	0	0	0	0	0	0	0	0	0	0	0	0	0	0	TA-U
CON	0	0	0	0	0	0	10,217	8,174	2,043	10,217	8,174	2,043	10,217	8,174	2,043	0	0	0	STBG
CON	0	0	0	0	0	0	1,250	1,000	250	1,250	1,000	250	1,250	1,000	250	0	0	0	TA-U

---

OC25

Transportation Alternatives Set-Aside Program (MPO) at Various Locations

---

Total	2,640	2,112	528	0	0	0	11,467	9,174	2,293	11,467	9,174	2,293	11,467	9,174	2,293	0	0	0
-------	-------	-------	-----	---	---	---	--------	-------	-------	--------	-------	-------	--------	-------	-------	---	---	---





Source: Esri, Maxar, GeoEye, Earthstar Geographics, CNES/Airbus DS, USDA, USGS, AeroGRID, IGN, and the GIS User Community

**Project Description:**

The Transportation Alternatives Program (TAP) is a competitive grant program that provides funding for programs and projects defined as transportation alternatives, including on- and off-road pedestrian and bicycle facilities, infrastructure projects for improving non-driver access to public transportation and enhanced mobility, and community improvement activities. Locations to be determined by the State TAP Project Evaluation and Ranking process. HART projects may be flexed from FHWA to FTA. The Haleiwa Road Multi-Use Path Project will include design, construction, and inspection of improvements, including a multi-use path along Haleiwa Road between Waialua Beach Road and Kamehameha Highway

**Mile Post/s:**

**Complete Streets (CS):**

**Project will implement:** The Haleiwa Road Multi-Use Path project will incorporate complete streets features for pedestrian and bicycle use.

**Existing Feature/s:** No information available.

**Project Website:** None

**Neighborhood(s):** North Shore, Islandwide

**Estimated Total Project Cost:** \$1,892,000

*(May include project costs outside of the 4-year TIP and 2 informational years.)*

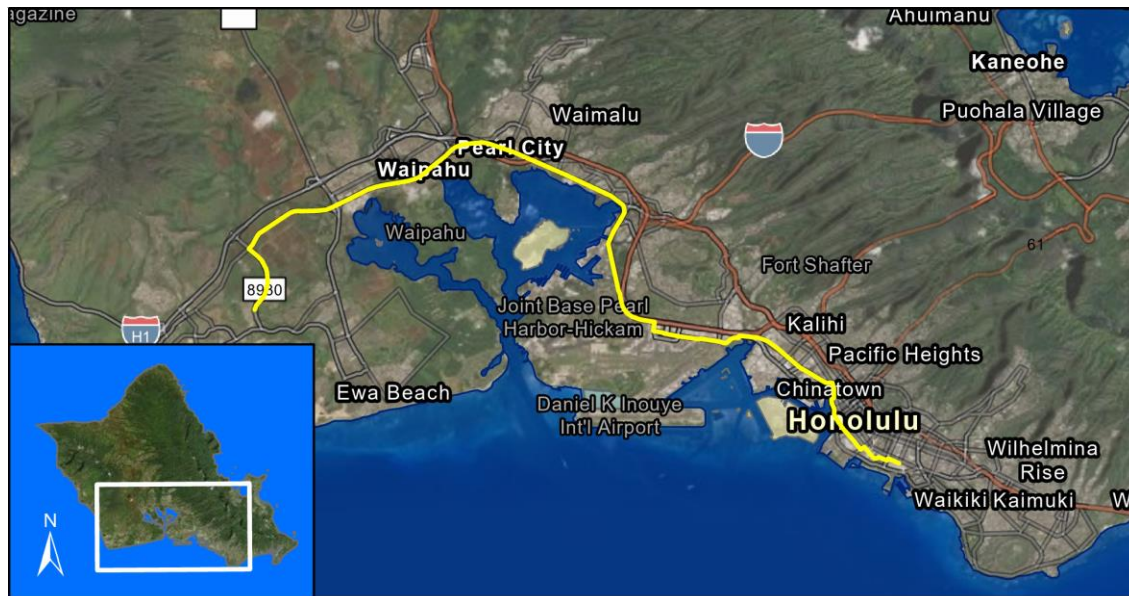
**Project Sponsor:** City and County of Honolulu

**Agency Responsible for Carrying Out Project/Phase:**  
City Department of Transportation Services

													FOR INFORMATION ONLY						Funding Category
Phase	FFY 2022			FFY 2023			FFY 2024			FFY 2025			FFY 2026			FFY 2027			
	Total	Federal	Local	Total	Federal	Local	Total	Federal	Local	Total	Federal	Local	Total	Federal	Local	Total	Federal	Local	
	(x\$1000)	(x\$1000)	(x\$1000)	(x\$1000)	(x\$1000)	(x\$1000)	(x\$1000)	(x\$1000)	(x\$1000)	(x\$1000)	(x\$1000)	(x\$1000)	(x\$1000)	(x\$1000)	(x\$1000)	(x\$1000)	(x\$1000)	(x\$1000)	
Haleiwa Road Multi-Use Path																			
CON	0	0	0	0	0	0	209	167	42	1,275	1,020	255	0	0	0	0	0	0	TA
INSP	0	0	0	0	0	0	0	0	0	408	326	82	0	0	0	0	0	0	TA
Total	0	0	0	0	0	0	209	167	42	1,683	1,346	337	0	0	0	0	0	0	

# **FTA-Funded Projects**

## **O'ahu State (OS) Projects**



Source: Esri, Maxar, GeoEye, Earthstar Geographics, CNES/Airbus DS, USDA, USGS, AeroGRID, IGN, and the GIS User Community, Sources: Esri, HERE, Garmin, FAO, NOAA, USGS, © OpenStreetMap contributors, and the GIS User Community

**Project Description:**

Provide operational resources for the State Safety Oversight Program administered by the HDOT Rail Transit Safety Office and will implement 49 CFR Part 674 State Safety Oversight Final Rule.

**Mile Post/s:** Not applicable

**Complete Streets (CS):**

**Project will implement:** Not applicable

**Existing Feature/s:** No information available.

**Project Website:** None

**Neighborhood(s):** Islandwide

**Estimated Total Project Cost:** \$2,582,000  
(over 6 years)

**Project Sponsor:** State of Hawaii (FTA Funded)

**Agency Responsible for Carrying Out Project/Phase:**

Hawaii Department of Transportation

**FOR INFORMATION ONLY**

Phase	FFY 2022			FFY 2023			FFY 2024			FFY 2025			FFY 2026			FFY 2027			Funding Category
	Total (x\$1000)	Federal (x\$1000)	Local (x\$1000)	Total (x\$1000)	Federal (x\$1000)	Local (x\$1000)	Total (x\$1000)	Federal (x\$1000)	Local (x\$1000)	Total (x\$1000)	Federal (x\$1000)	Local (x\$1000)	Total (x\$1000)	Federal (x\$1000)	Local (x\$1000)	Total (x\$1000)	Federal (x\$1000)	Local (x\$1000)	
OPR	672	537	135	357	285	72	374	299	75	393	314	79	393	314	79	393	314	79	\$5329
Total	672	537	135	357	285	72	374	299	75	393	314	79	393	314	79	393	314	79	

# **FTA-Funded Projects**

## **O'ahu City (OC) Projects**



**Project Description:**

Preventive maintenance of FTA-funded rolling stock (buses and Handi-Vans) includes parts, labor, and other related expenses.

**Mile Post/s:**

**Complete Streets (CS):**

**Project will implement:** Not applicable

**Existing Feature/s:** Not applicable

**Project Website:** None

**Neighborhood(s):** Various Locations

**Estimated Total Project Cost:** \$157,500,000

*(May include project costs outside of the 4-year TIP and 2 informational years.)*

**Project Sponsor:** City and County of Honolulu

**Agency Responsible for Carrying Out Project/Phase:**

City Department of Transportation Services

**FOR INFORMATION ONLY**

Phase	FFY 2022			FFY 2023			FFY 2024			FFY 2025			FFY 2026			FFY 2027			Funding Category
	Total (x\$1000)	Federal (x\$1000)	Local (x\$1000)	Total (x\$1000)	Federal (x\$1000)	Local (x\$1000)	Total (x\$1000)	Federal (x\$1000)	Local (x\$1000)	Total (x\$1000)	Federal (x\$1000)	Local (x\$1000)	Total (x\$1000)	Federal (x\$1000)	Local (x\$1000)	Total (x\$1000)	Federal (x\$1000)	Local (x\$1000)	
OPR	26,250	21,000	5,250	26,250	21,000	5,250	26,250	21,000	5,250	26,250	21,000	5,250	26,250	21,000	5,250	26,250	21,000	5,250	\$5307/\$5340
Total	26,250	21,000	5,250	26,250	21,000	5,250	26,250	21,000	5,250	26,250	21,000	5,250	26,250	21,000	5,250	26,250	21,000	5,250	



Source: Esri, Maxar, GeoEye, Earthstar Geographics, CNES/Airbus DS, USDA, USGS, AeroGRID, IGN, and the GIS User Community

**Project Description:**

Capital improvement projects at various locations will provide safety and security aboard transit vehicles and at future and existing bus stops and transit centers, park-and-ride lots, and bus maintenance facilities.

**Mile Post/s:** Not applicable

**Complete Streets (CS):**

**Project will implement:** Not applicable

**Existing Feature/s:** No information available.

**Project Website:** None

**Neighborhood(s):** Various Locations

**Estimated Total Project Cost:** \$3,091,000

(May include project costs outside of the 4-year TIP and 2 informational years.)

**Project Sponsor:** City and County of Honolulu

**Agency Responsible for Carrying Out Project/Phase:**

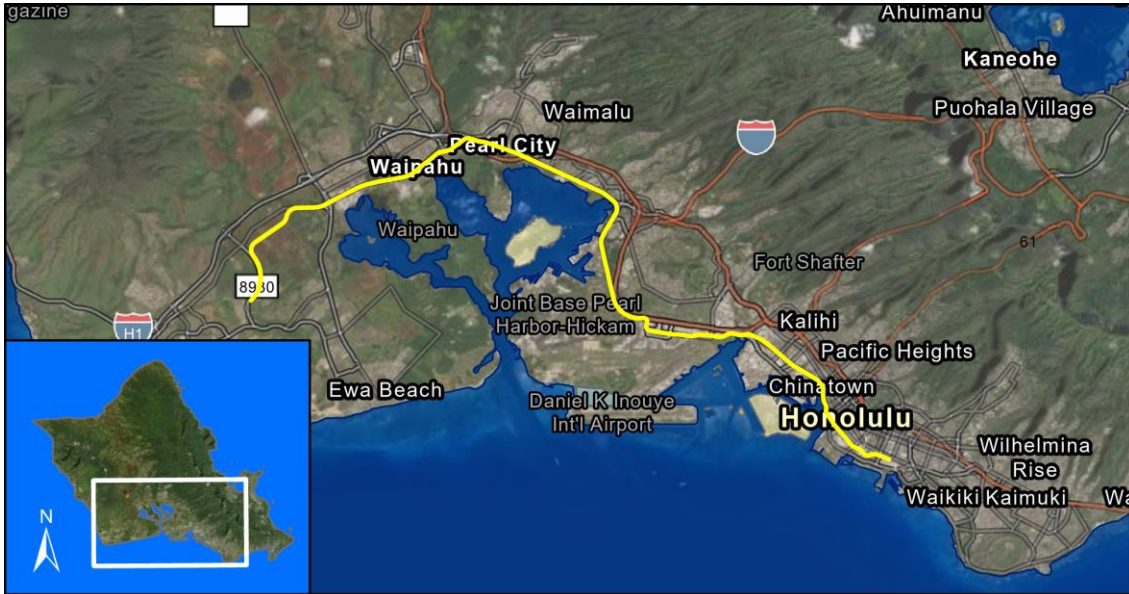
City Department of Transportation Services

**FOR INFORMATION ONLY**

Phase	FFY 2022			FFY 2023			FFY 2024			FFY 2025			FFY 2026			FFY 2027			Funding Category
	Total (x\$1000)	Federal (x\$1000)	Local (x\$1000)	Total (x\$1000)	Federal (x\$1000)	Local (x\$1000)	Total (x\$1000)	Federal (x\$1000)	Local (x\$1000)	Total (x\$1000)	Federal (x\$1000)	Local (x\$1000)	Total (x\$1000)	Federal (x\$1000)	Local (x\$1000)	Total (x\$1000)	Federal (x\$1000)	Local (x\$1000)	
PLN	0	0	0	1	0	1	1	0	1	1	0	1	1	0	1	1	0	1	Local Funds
DES	0	0	0	91	73	18	91	73	18	91	73	18	91	73	18	91	73	18	§5307/§5340
CON	2	1	1	2	1	1	2	1	1	2	1	1	2	1	1	2	1	1	§5307/§5340
EQP	804	644	160	363	290	73	363	290	73	363	290	73	363	290	73	363	290	73	§5307/§5340
Total	806	645	161	457	364	93	457	364	93	457	364	93	457	364	93	457	364	93	



## OC-21-59 Intermodal Connectivity TA Set-Aside (OahuMPO)



Source: Esri, Maxar, GeoEye, Earthstar Geographics, CNES/Airbus DS, USDA, USGS, AeroGRID, IGN, and the GIS User Community, Sources: Esri, HERE, Garmin, FAO, NOAA, USGS, © OpenStreetMap contributors, and the GIS User Community

### Project Description:

This program encompasses projects that have been awarded OahuMPO Transportation Set-Aside funds (TA Set-Aside) and have been flexed from FHWA to FTA. The TA Set-Aside is a competitive grant program that provides funding for programs and projects defined as transportation alternatives, including on- and off-road pedestrian and bicycle facilities, infrastructure projects for improving non-driver access to public transportation and enhanced mobility, and community improvement activities. Locations to be determined by the OahuMPO TA Project Evaluation and Ranking process.

### Mile Post/s:

### Complete Streets (CS):

**Project will implement:** Project will incorporate complete streets features for pedestrian and bicycle use.

### Existing Feature/s:

**Project Website:** None

**Neighborhood(s):** Various Locations

**Estimated Total Project Cost:** \$43,250,000

(May include project costs outside of the 4-year TIP and 2 informational years.)

**Project Sponsor:** City and County of Honolulu

**Agency Responsible for Carrying Out Project/Phase:**

City Department of Transportation Services

### FOR INFORMATION ONLY

Phase	FFY 2022			FFY 2023			FFY 2024			FFY 2025			FFY 2026			FFY 2027			Funding Category
	Total (x\$1000)	Federal (x\$1000)	Local (x\$1000)	Total (x\$1000)	Federal (x\$1000)	Local (x\$1000)	Total (x\$1000)	Federal (x\$1000)	Local (x\$1000)	Total (x\$1000)	Federal (x\$1000)	Local (x\$1000)	Total (x\$1000)	Federal (x\$1000)	Local (x\$1000)	Total (x\$1000)	Federal (x\$1000)	Local (x\$1000)	
Rail Multimodal Access Improvements																			
PE1	1,250	1,000	250	0	0	0	0	0	0	0	0	0	0	0	0	0	0	0	\$5307
PE2	2,642	2,113	529	0	0	0	0	0	0	0	0	0	0	0	0	0	0	0	\$5307
CON	0	0	0	0	0	0	35,000	0	35,000	0	0	0	0	0	0	0	0	0	Local Funds
INSP	0	0	0	0	0	0	3,000	0	3,000	0	0	0	0	0	0	0	0	0	Local Funds
Total	3,892	3,113	779	0	0	0	38,000	0	38,000	0	0	0	0	0	0	0	0	0	





Source: Esri, Maxar, GeoEye, Earthstar Geographics, CNES/Airbus DS, USDA, USGS, AeroGRID, IGN, and the GIS User Community

**Project Description:**

Department of Transportation Services staff attendance at training workshops offered by the National Transit Institute.

**Mile Post/s:**

**Complete Streets (CS):**

Project will implement: Not applicable

Existing Feature/s: Not applicable

**Project Website:** None

**Neighborhood(s):** Various Locations

**Estimated Total Project Cost:** \$146,000

(May include project costs outside of the 4-year TIP and 2 informational years.)

**Project Sponsor:** City and County of Honolulu

**Agency Responsible for Carrying Out Project/Phase:**

City Department of Transportation Services

**FOR INFORMATION ONLY**

Phase	FFY 2022			FFY 2023			FFY 2024			FFY 2025			FFY 2026			FFY 2027			Funding Category
	Total (x\$1000)	Federal (x\$1000)	Local (x\$1000)	Total (x\$1000)	Federal (x\$1000)	Local (x\$1000)	Total (x\$1000)	Federal (x\$1000)	Local (x\$1000)	Total (x\$1000)	Federal (x\$1000)	Local (x\$1000)	Total (x\$1000)	Federal (x\$1000)	Local (x\$1000)	Total (x\$1000)	Federal (x\$1000)	Local (x\$1000)	
OPR	0	0	0	28	22	6	29	23	6	29	23	6	30	24	6	30	24	6	\$5307/\$5340
Total	0	0	0	28	22	6	29	23	6	29	23	6	30	24	6	30	24	6	

This report was funded in part through grants from the Federal Highway Administration and Federal Transit Administration, U.S. Department of Transportation. The views and opinions of the agency expressed herein do not necessarily state or reflect those of the U.S. Department of Transportation.

The City and County of Honolulu is using the OahuMPO TIP public involvement process, as outlined in the Federal Highway Administration/Federal Transit Administration metropolitan transportation planning regulations (23 CFR 450/49 CFR 613), to satisfy the public hearing requirements for the Federal Transit Administration's Urbanized Area Formula Program (49 U.S.C. Section 5307) program-of-projects.