

TRANSPORTATION IMPROVEMENT PROGRAM

FEDERAL FISCAL YEARS 2022 – 2025

Revision 15
Amendment

May 2023



This report was funded in part through grants from the Federal Highway Administration and Federal Transit Administration, U.S. Department of Transportation. The views and opinions of the agency expressed herein do not necessarily state or reflect those of the U.S. Department of Transportation.

Table of Contents

ABBREVIATIONS.....	3
INTRODUCTION.....	6
REVISION PROCESS.....	8
REVISION HISTORY	14
REVISIONS.....	15
FINANCIAL PLAN.....	19
PROJECTS.....	25
APPENDICES.....	44

ABBREVIATIONS

Acronyms

ADA	Americans with Disabilities Act
CAC	Citizen Advisory Committee
CFR	Code of Federal Regulations
CMP	Congestion Management Process
DDC	City and County of Honolulu Department of Design and Construction
DTS	City and County of Honolulu Department of Transportation Services
EJ	Environmental Justice
FHWA	Federal Highway Administration
FTA	Federal Transit Administration
FFY	Federal Fiscal Year (October 1- September 30)
HART	Honolulu Authority for Rapid Transportation
HDOT	Hawaii Department of Transportation
HSIP	Highway Safety Improvement Program
IGR	Intergovernmental Review
OahuMPO	Oahu Metropolitan Planning Organization
OCCSR	City and County of Honolulu Office of Climate Change, Sustainability and Resiliency
ORTP	Oahu Regional Transportation Plan
STIP	Statewide Transportation Improvement Program
TAC	Technical Advisory Committee
TAM	Transit Asset Management
TIP	Transportation Improvement Program
T6	Title VI of the Civil Rights Act of 1964
U.S.C.	United States Code

Funding Categories

Federal Highway Administration (FHWA)

Bridge OS	Bridge Off-System
Earmark	Earmark
FHWA Grant	FHWA Competitive Grants
FLAP	Federal Lands Highway Discretionary
HIP-BFP	Highway Infrastructure Program - Bridge Formula Program
HIP-CPF/CDS	Highway Infrastructure Program - Community Project Funding / Congressionally Directed Spending
HSIP	Highway Safety Improvement Program
NHPP	National Highway Performance Program
RHCP	Railway Highway Crossing Program
STBG	Surface Transportation Block Grant Program
STP Enhance	Surface Transportation Program Enhancement
TA	Transportation Alternatives Set-Aside

Federal Transit Administration (FTA)

§5307/5340	Urbanized Area Formula Grants / Growing States/High Density States Program
§5309	Capital Investment Grants
§5310	Enhanced Mobility of Seniors & Individuals with Disabilities
§5329	State Safety Oversight Program
§5337	State of Good Repair Program
§5339	Bus and Bus Facilities Program
FTA Grant	FTA Competitive Grants
Discretionary	Congressional Discretionary Spending

Local

Local	Local Funds
-------	-------------

Project Phases (In Chronological Order)

H RTP	Honolulu Rail Transit Project
PLN	Planning
PE1	Preliminary Engineering – Part 1: Environmental Clearances and Design Work
PE2	Preliminary Engineering – Part 2: Final Design
DES	Design
PREROW	Preliminary Right-of-Way Activities
ROW	Right-of-Way Acquisition
PE2/CON	Final Design-Build
DES/CON	Design-Build
ADVCON	Advance Construction
CON	Construction
EQP	Equipment acquisition
REL	Relocation expenses
OPR	Operation expenses
INSP	Inspection

INTRODUCTION

The Transportation Improvement Program (TIP) is a short-term program, which lists all surface transportation projects or phases of projects on the island of Oahu that:

- Are regionally significant projects
- Use Federal Highway Administration (FHWA) or Federal Transit Administration (FTA) funding for projects including transportation alternatives, transit improvements, Federal Lands Transportation Program (FLTP) and Federal Lands Access Program (FLAP), Highway Safety Improvement Program (HSIP), trails, pedestrian walkways, and bicycle facilities except the following:
 - Safety projects under the Highway Safety Program and the Motor Carrier Safety Assistance Program
 - Metropolitan planning projects under the Unified Planning Work Program
 - State planning and research projects under State Planning and Research and Planning Programs
 - Emergency relief projects (except those involving substantial functional, locational, or capacity changes)
 - National planning and research projects under Technical Assistance and Workforce Development
 - Project management oversight projects under Project Management Oversight
- Require action by the FHWA or FTA (e.g., adding a freeway interchange with non-Federal funds)

Each project or project phase in the TIP must be consistent with the Oahu Regional Transportation Plan (ORTP). Projects or phases of projects can only be included if full funding can reasonably be anticipated to be available within the time period for completion of the project. Fiscal constraint must be demonstrated and maintained by year and include sufficient financial information to demonstrate which projects are to be implemented using current and/or reasonably available revenues. The TIP is also required to include a financial plan that demonstrates how the TIP can be implemented, identifies funding sources that are reasonably expected to be made available and any additional financing needed to carry out the TIP.

The TIP covers a period of four years plus two additional years for informational purposes. The TIP is updated every three years to provide a one-year overlap between updates and revised at least twice every Federal fiscal year (FFY) or as needed which is compatible with the Statewide Transportation Improvement Program (STIP) development and revision process. The TIP expires when the FHWA/FTA approval of the STIP expires.

REVISION PROCESS

Between updates every three years, the TIP is revised twice a year following the Semi-Annual Revision Schedule or as needed (e.g., emergency projects in response to natural and other disasters, situations where federal funds are at risk or become available, etc.) using an Out-of-Cycle Revision Schedule with processing time subject to the type of change described below. Either method is compatible with the STIP revision process.

A minor change is called an Administrative Modification while a major change is considered an Amendment.

An Administrative Modification is a minor change in cost to a project or project phase, a minor change to funding sources, a minor change to the start or end date of a project or project phase, a minor change in design concept or design scope, minor corrections, or adding, modifying, or removing a project or project phase involving advance construction. This revision does not require public review and comment or a redemonstration of fiscal constraint. An Administrative Modification does not require recommendation by the CAC and TAC or Policy Board approval. However, the Policy Board will be provided a copy of the Administrative Modification.

An Amendment is a major change to a project or project phase including the addition or deletion of a project, a major change in cost to a project or project phase, a major change to the start or end date of a project or project phase, a major change in design concept or design scope (e.g., changing project termini or the number of through traffic lanes or changing the number of stations in the case of fixed guideway transit projects). Changes to a project that is included only for illustrative purposes does not require an Amendment. This revision requires a public review and comment period and a redemonstration of fiscal constraint. An Amendment requires recommendation by the CAC and TAC for Policy Board approval.

The OahuMPO will determine the type of revision using the Administrative Modification and Amendment Decision Table below. If the type of revision cannot be determined, the OahuMPO will consult with the partner agencies to make a determination. Misspellings, typos, and other data entry errors will be corrected by the OahuMPO in cooperation with the partner agencies and is not considered a revision.

Administrative Modification and Amendment Decision Table

Type of Change	A. Administrative Modification	B. Amendment
1. Adding or removing a project in the first four years of the TIP		X
2. A major change in cost to a project or project phase in the first four years of the TIP that exceeds both \$10 million and 25% of the estimated total project cost before the proposed increase, excluding the current inflation rate ¹		X
3. A major change to the start or end date of a project or project phase: 3.1. Moving a project to the illustrative years 3.2. Deferring a project phase to a year that is outside of the first four years of the TIP when there are no other project phases in the first four years		X
4. A major change in design concept or design scope: 4.1 Changing project termini 4.2 Changing the number of through traffic lanes 4.3 Changing the number of stations in the case of fixed guideway transit projects 4.4 Changing the purpose and need (e.g., shoreline protection to capacity) 4.5 Changing between replacement buses and expansion buses 4.6 Adding a project phase to an existing project with major changes in cost defined in B.2		X
5. A major change in funding sources: 5.1. Transferring (flexing) funds between Federal agencies that is greater than \$10 million		X

Type of Change	A. Administrative Modification	B. Amendment
<p>6. A minor change in design concept or design scope:</p> <p>6.1. Splitting or grouping projects as long as the design concept or design scope remains unchanged with minor changes in cost to a project or project phase defined in A.8</p> <p>6.2. Adding or deleting projects from grouped listings as long as the design concept or design scope remains unchanged with minor changes in cost to a project or project phase defined in A.8</p> <p>6.3. Changing the design scope to accommodate prescribed actions under NEPA.</p> <p>6.4. Adding a project phase to an existing project with minor changes in cost defined in A.8</p>	X	
<p>7. Changes to a project or project phase that is included only for illustrative purposes</p>	X	
<p>8. A minor change in cost to a project or project phase in the first four years of the TIP that is below the thresholds defined in B.2</p>	X	
<p>9. A minor change to funding sources:</p> <p>9.1. Transferring (flexing) funds between Federal agencies that is below the threshold defined in B.5.1</p> <p>9.2. Changing funding sources within the same Federal agency</p> <p>9.3. Changing funding sources between Federal, local, and state agencies</p> <p>9.4. Adding discretionary funds (e.g., congressional earmarks)</p>	X	

Type of Change	A. Administrative Modification	B. Amendment
10. A minor change to the start or end date of a project or project phase:		
10.1. Advancing a project from the programmed year		
10.2. Deferring a project to a later year within the first four years of the TIP	X	
10.3. Deleting or deferring a project phase to a year outside of the first four years of the TIP as long as another phase of the project remains within the first four years and the design concept or design scope remains unchanged		
11. Adding, modifying, or removing a project or project phase involving advance construction	X	

1. Approved by the OahuMPO Policy Board on February 28, 2023, on the condition that the cost threshold for a major change to a project or project phase (see 2.B in the Administrative Modification and Amendment Decision Table) will automatically revert from \$10 million to \$5 million at the end of one year from the approval date unless approved by the Policy Board on a permanent basis.

Semi-Annual Revision Schedule - Administrative Modification

Activity	Fall Revision	Spring Revision
OSR meetings	October	March
Agencies submit revisions	November	April
Development of the draft TIP revision	November - December	April - May
TIP approval, STIP incorporation, and FHWA/FTA approval	January	June
Total processing time	4 months	4 months

Semi-Annual Revision Schedule - Amendment

Activity	Fall Revision	Spring Revision
OSR meetings	October	March
Agencies submit revisions	November	April
Development of the draft TIP revision	November - December	April - May
Public comment and intergovernmental review	December - January	May - June
Response to comments	January	June
Committees and Policy Board	February	July
TIP approval, STIP incorporation, and FHWA/FTA approval	March	August
Total processing time	6 months	6 months

Out-of-Cycle Revision Schedule

Activity	Administrative Modification	Amendment
Agencies submit revisions	1-3 days	1-3 days
Development of the draft TIP revision	At least 1 week	At least 2 weeks due to technical analysis (e.g., CMP, fiscal constraint, new project scoring, and T6/EJ analysis)
Public comment and intergovernmental review		2 weeks
Response to comments		1 week
Committees and Policy Board		At least 4 weeks due to the Committees and Policy Board schedule
TIP approval, STIP incorporation, and FHWA/FTA approval	At least 1 week	At least 1 week
Total processing time	At least 2 weeks	At least 10 weeks

REVISION HISTORY

The TIP FFYs 2022-2025 was approved by the Policy Board in July 2021 and has been revised 14 times through May 2023. A summary is provided in the table below.

Revision #	Revision Type	Date	# Of Projects Modified	# Of Projects Removed	# Of Projects Added	Total # Of Projects Revised
1	Pre-Approved Administrative Modification	January 2022	37	0	0	37
2	Expedited Administrative Modification	February 2022	6	0	0	6
3	Amendment	February 2022	6	1	6	13
4	Pre-Approved Administrative Modification	May 2022	19	0	0	19
5	Expedited Administrative Modification	June 2022	1	0	0	1
6	Amendment	June 2022	3	1	4	8
7	Expedited Administrative Modification	July 2022	1	0	0	1
8	Pre-Approved Administrative Modification	September 2022	1	0	0	1
9	Pre-Approved Administrative Modification	December 2022	34	0	0	34
10	Expedited Administrative Modification	March 2023	2	0	0	2
11	Amendment	March 2023	5	0	10	15
12	Administrative Modification	March 2023	1	0	0	1
13	Administrative Modification	April 2023	2	0	0	2
14	Administrative Modification	May 2023	31	0	0	31
Total			149	2	20	171

REVISIONS

The following tables list the revisions grouped by the type of federal funding (e.g., FHWA) and project sponsor (e.g., HDOT).

FHWA Funded Projects: Hawaii Department of Transportation

Project #	Project Name	Revision Details
OS63	Traffic Counting Stations at Various Locations, Oahu	Request to remove the project as the scope of work will be reduced and combined in statewide project S23 (B.1).
OS-21-53	Farrington Highway (RTE 93) Widening (Helelua St to Mohihi St) & Sidewalk (Hakimo Rd to Nanakuli Ave) Improvements	Request to adjust ADVCON funds in FFYs 2025-2027 since CON is deferred (A.11).
OS-21-53	Farrington Highway (RTE 93) Widening (Helelua St to Mohihi St) & Sidewalk (Hakimo Rd to Nanakuli Ave) Improvements	Request to defer and increase CON funds from FFY 2024 to FFY 2026 as project will include the additional scope of work in OS-22-62 Farrington Hwy Sidewalk Improvements, Hakimo Rd to Nanakuli Ave (B.3.2).
OS-21-53	Farrington Highway (RTE 93) Widening (Helelua St to Mohihi St) & Sidewalk (Hakimo Rd to Nanakuli Ave) Improvements	Request to increase the estimated total project cost from \$34,500,000 to \$51,500,000 (B.2).
OS-22-62	Farrington Highway (RTE 93) Sidewalk Improvements, Hakimo Rd to Nanakuli Ave, MP 6.89 to MP 5.06	Request to remove the project as the scope of work will be covered in OS-21-53 Farrington Hwy Widening, Helelua St to Mohihi St (B.1).
OS-23-68	Kamehameha Highway (Route 80), Bridge Rehabilitation, NF Kaukonahua (Karsten Thot) Bridge	Request to add the Karsten Thot Bridge Rehabilitation project to the FFYs 2022-2025 TIP at an estimated total project cost of \$30,912,000 using HIP-BFP funds (B.1).
OS-23-65	Farrington Highway (Route 93), Bridge Rehabilitation, Mailiili Stream Bridge	Request to add the Mailiili Stream Bridge Rehabilitation project to the FFYs 2022-2025 TIP at an estimated total project cost of \$14,220,000 using HIP-BFP funds (B.1).
OS-23-66	Interstate Route H-2, Panakauahi 3-144 and 4-144 Culvert Rehabilitation	Request to add the Panakauahi Culvert Rehabilitation project to the FFYs 2022-2025 TIP at an estimated total project cost of \$13,000,000 using HIP-BFP funds (B.1).
OS-23-67	Interstate Route H-3, Luluku Culvert Repair, Vicinity of Interstate Route H-3 (MP 8.67) and Likelike Hwy	Request to add the Luluku Culvert Repair project to the FFYs 2022-2025 TIP at an estimated total project cost of \$6,000,000 using NHPP funds (B.1).
OS-23-69	Kamehameha Hwy (Route 83), Rehabilitation, Waimea Stream Bridge	Request to add the Waimea Stream Bridge Rehabilitation project to the FFYs 2022-2025 TIP at an estimated total project cost of \$5,664,000 using HIP-BFP funds (B.1).
OS-23-70	Likelike Highway (Rte 63), Tunnel Rehabilitation, Wilson Tunnels	Request to add the Rehabilitation of Wilson Tunnels project to the FFYs 2022-2025 TIP at an estimated total project cost of \$47,320,000 using NHPP funds (B.1).
OS80	Traffic Signal Modernization Program, Various Locations	Request add ADVCON funds for PE in FFYs 2025-2027 (A.8).
OS80	Traffic Signal Modernization Program, Various Locations	Request to add additional ADVCON funds in FFYs 2025-2027 (B.2).
OS80	Traffic Signal Modernization Program, Various Locations	Request to add additional CON funds in FFYs 2024-2027 to include the acceleration of multiple phases of implementation (B.2).
OS80	Traffic Signal Modernization Program, Various Locations	Request to add STBG funds for PE1/PE2 in FFYs 2024-2026 (A.8).
OS80	Traffic Signal Modernization Program, Various Locations	Request to increase the estimated total project cost from \$9,500,000 to \$81,500,000 (B.2).

FHWA Funded Projects: City & County of Honolulu

Project #	Project Name	Revision Details
OC25	Transportation Alternatives Program (MPO)	Ala Wai Bridge Project - Request to add CON and INSP funds per updated cost estimate (B.2).
OC25	Transportation Alternatives Program (MPO)	Ala Wai Bridge Project - Request to defer PE2 due to the City's Division of Purchasing delays (A.10.2).
OC25	Transportation Alternatives Program (MPO)	Rail Station Multimodal Access Improvements - Halawa (Aloha Stadium) Station and Waiawa (Pearl Highlands) Station - Request to add and transfer funds to FTA, and add PE2 and INSP phases (A.6.4 and A.8).
OC25	Transportation Alternatives Program (MPO)	Request to increase the estimated total project cost from \$51,100,000 to \$66,400,000 (B.2).
OC29	Federal Lands Access Program (FLAP)	Request to remove the FLAP program due to alignment issues (B.1).

FTA Funded Projects: City & County of Honolulu

Project #	Project Name	Revision Details
OC13	Bus and Handi-Van Acquisition Program	FFY 2024: Request to remove and replace EQP funds (B.2).
OC13	Bus and Handi-Van Acquisition Program	FFYs 2022-2023: Request to revise EQP funds (A.8).
OC13	Bus and Handi-Van Acquisition Program	FFYs 2024-2027: Request to add Low or No-Emission funds for EQP (B.2).
OC13	Bus and Handi-Van Acquisition Program	Request to increase the estimated total project cost from \$229,278,000 to \$383,358,000 (B.2).
OC13	Bus and Handi-Van Acquisition Program	Request to revise the INSP phase to OPER phase per the City's Department of Budget and Fiscal Services request (A.8).

FINANCIAL PLAN

A financial plan is required to be financially constrained by each program year and include sufficient financial information for demonstrating that projects can be implemented using committed, available, or reasonably available revenue sources, with reasonable assurance that the federally supported transportation system is being adequately operated and maintained. Revenue and cost estimates use a current inflation rate to reflect year of expenditure dollars developed cooperatively by the OahuMPO, HDOT, DTS, and HART.

The tables below show the revenue by funding source and expenditures by project phases for all projects in TIP FFYs 2022-2025 As of Revision 15 for each program year, including a total for FFYs 2022-2025.

Funding Category	Revenue: FFY 2022 (x1000)		
	Total	Federal	Local
§5307/§5340	\$64,375	\$51,493	\$12,882
§5309	\$70,000	\$70,000	\$0
§5310	\$1,331	\$1,088	\$243
§5329	\$672	\$537	\$135
§5337	\$1,763	\$1,410	\$353
§5339	\$4,325	\$3,460	\$865
Bridge OS	\$1,780	\$1,200	\$580
Discretionary	\$0	\$0	\$0
Earmark	\$0	\$0	\$0
FHWA Grant	\$0	\$0	\$0
FLAP	\$0	\$0	\$0
HIP-BFP	\$0	\$0	\$0
HIP-CPF/CDS	\$0	\$0	\$0
HSIP	\$15,950	\$17,707	-\$1,757
Local	\$22,520	\$0	\$22,520
NHPP	\$86,150	\$123,032	-\$36,882
RHCP	\$0	\$0	\$0
STBG	\$81,743	\$14,760	\$66,983
STP Enhance	\$0	\$3,457	-\$3,457
TA	\$0	\$0	\$0
TOTAL	\$350,609	\$288,144	\$62,465

Project Phase	Expenditures: FFY 2022 (x1000)		
	Total	Federal	Local
H RTP	\$70,000	\$70,000	\$0
PLN	\$0	\$0	\$0
PE1	\$2,750	\$1,080	\$1,670
PE2	\$736	\$501	\$235
PE1/PE2	\$0	\$0	\$0
PE2/CON	\$0	\$0	\$0
DES	\$2,145	\$1,492	\$653
ROW	\$10	\$0	\$10
ADVCON	\$0	\$97,646	-\$97,646
CON	\$193,466	\$51,785	\$141,681
EQP	\$71,008	\$56,799	\$14,209
OPR	\$5,809	\$5,096	\$713
INSP	\$4,685	\$3,745	\$940
TOTAL	\$350,609	\$288,144	\$62,465

Funding Category	Revenue: FFY 2023 (x1000)		
	Total	Federal	Local
§5307/§5340	\$129,506	\$96,272	\$33,234
§5309	\$165,000	\$125,000	\$40,000
§5310	\$1,363	\$1,090	\$273
§5329	\$1,144	\$915	\$229
§5337	\$4,702	\$3,997	\$705
§5339	\$46,987	\$38,780	\$8,207
Bridge OS	\$3,640	\$2,400	\$1,240
Discretionary	\$63,800	\$63,800	\$0
Earmark	\$0	\$4,400	-\$4,400
FHWA Grant	\$10,125	\$8,100	\$2,025
FLAP	\$0	\$0	\$0
HIP-BFP	\$1,250	\$1,000	\$250
HIP-CPF/CDS	\$10,250	\$10,200	\$50
HSIP	\$2,035	\$1,630	\$405
Local	\$22,230	\$0	\$22,230
NHPP	\$123,172	\$44,872	\$78,300
RHCP	\$2,300	\$2,070	\$230
STBG	\$100,303	\$81,362	\$18,941
STP Enhance	\$0	\$0	\$0
TA	\$12,461	\$9,969	\$2,492
TOTAL	\$700,268	\$495,857	\$204,411

Project Phase	Expenditures: FFY 2023 (x1000)		
	Total	Federal	Local
H RTP	\$294,800	\$243,800	\$51,000
PLN	\$110	\$88	\$22
PE1	\$10,957	\$6,526	\$4,431
PE2	\$6,432	\$3,459	\$2,973
PE1/PE2	\$4,500	\$3,600	\$900
PE2/CON	\$0	\$0	\$0
DES	\$4,119	\$2,806	\$1,313
ROW	\$2,765	\$1,388	\$1,377
ADVCON	\$0	\$36,400	-\$36,400
CON	\$264,067	\$102,880	\$161,187
EQP	\$102,042	\$86,408	\$15,634
OPR	\$6,334	\$5,516	\$818
INSP	\$4,142	\$2,986	\$1,156
TOTAL	\$700,268	\$495,857	\$204,411

Funding Category	Revenue: FFY 2024 (x1000)		
	Total	Federal	Local
§5307/§5340	\$198,442	\$150,325	\$48,117
§5309	\$330,000	\$250,000	\$80,000
§5310	\$1,756	\$1,629	\$127
§5329	\$595	\$475	\$120
§5337	\$1,667	\$1,500	\$167
§5339	\$41,688	\$35,355	\$6,333
Bridge OS	\$2,913	\$1,952	\$961
Discretionary	\$0	\$0	\$0
Earmark	\$0	\$0	\$0
FHWA Grant	\$47,019	\$37,615	\$9,404
FLAP	\$0	\$0	\$0
HIP-BFP	\$15,500	\$3,400	\$12,100
HIP-CPF/CDS	\$14,194	\$11,355	\$2,839
HSIP	\$1,395	\$1,295	\$100
Local	\$21,000	\$0	\$21,000
NHPP	\$148,599	\$87,593	\$61,006
RHCP	\$0	\$0	\$0
STBG	\$92,338	\$56,975	\$35,363
STP Enhance	\$0	\$0	\$0
TA	\$5,140	\$4,112	\$1,028
TOTAL	\$922,246	\$643,581	\$278,665

Project Phase	Expenditures: FFY 2024 (x1000)		
	Total	Federal	Local
H RTP	\$360,000	\$275,000	\$85,000
PLN	\$0	\$0	\$0
PE1	\$46,820	\$36,665	\$10,155
PE2	\$10,278	\$6,767	\$3,511
PE1/PE2	\$1,500	\$200	\$1,300
PE2/CON	\$250	\$200	\$50
DES	\$3,652	\$2,206	\$1,446
ROW	\$3,720	\$2,175	\$1,545
ADVCON	\$0	\$49,017	-\$49,017
CON	\$365,550	\$166,176	\$199,374
EQP	\$83,450	\$69,830	\$13,620
OPR	\$33,073	\$26,907	\$6,166
INSP	\$13,953	\$8,438	\$5,515
TOTAL	\$922,246	\$643,581	\$278,665

Funding Category	Revenue: FFY 2025 (x1000)		
	Total	Federal	Local
§5307/§5340	\$83,745	\$58,470	\$25,275
§5309	\$165,000	\$125,000	\$40,000
§5310	\$1,095	\$876	\$219
§5329	\$625	\$500	\$125
§5337	\$1,963	\$1,570	\$393
§5339	\$27,778	\$23,267	\$4,511
Bridge OS	\$2,880	\$1,930	\$950
Discretionary	\$0	\$0	\$0
Earmark	\$0	\$0	\$0
FHWA Grant	\$15,549	\$12,440	\$3,109
FLAP	\$0	\$0	\$0
HIP-BFP	\$2,970	\$5,376	-\$2,406
HIP-CPF/CDS	\$4,350	\$3,480	\$870
HSIP	\$2,000	\$1,600	\$400
Local	\$42,801	\$0	\$42,801
NHPP	\$106,266	\$96,335	\$9,931
RHCP	\$0	\$0	\$0
STBG	\$61,739	\$54,990	\$6,749
STP Enhance	\$0	\$0	\$0
TA	\$2,345	\$1,876	\$469
TOTAL	\$521,106	\$387,710	\$133,396

Project Phase	Expenditures: FFY 2025 (x1000)		
	Total	Federal	Local
H RTP	\$195,000	\$150,000	\$45,000
PLN	\$1	\$0	\$1
PE1	\$9,277	\$6,342	\$2,935
PE2	\$34,739	\$8,456	\$26,283
PE1/PE2	\$5,000	\$3,000	\$2,000
PE2/CON	\$0	\$0	\$0
DES	\$3,336	\$2,295	\$1,041
ROW	\$11,242	\$8,592	\$2,650
ADVCON	\$0	\$77,860	-\$77,860
CON	\$179,713	\$64,399	\$115,314
EQP	\$44,439	\$36,274	\$8,165
OPR	\$33,141	\$26,962	\$6,179
INSP	\$5,218	\$3,530	\$1,688
TOTAL	\$521,106	\$387,710	\$133,396

Funding Category	Revenue: FFY 2022-2025 (x1000)		
	Total	Federal	Local
§5307/§5340	\$476,068	\$356,560	\$119,508
§5309	\$730,000	\$570,000	\$160,000
§5310	\$5,545	\$4,683	\$862
§5329	\$3,036	\$2,427	\$609
§5337	\$10,095	\$8,477	\$1,618
§5339	\$120,778	\$100,862	\$19,916
Bridge OS	\$11,213	\$7,482	\$3,731
Discretionary	\$63,800	\$63,800	\$0
Earmark	\$0	\$4,400	-\$4,400
FHWA Grant	\$72,693	\$58,155	\$14,538
FLAP	\$0	\$0	\$0
HIP-BFP	\$19,720	\$9,776	\$9,944
HIP-CPF/CDS	\$28,794	\$25,035	\$3,759
HSIP	\$21,380	\$22,232	-\$852
Local	\$108,551	\$0	\$108,551
NHPP	\$464,187	\$351,832	\$112,355
RHCP	\$2,300	\$2,070	\$230
STBG	\$336,123	\$208,087	\$128,036
STP Enhance	\$0	\$3,457	-\$3,457
TA	\$19,946	\$15,957	\$3,989
TOTAL	\$2,494,229	\$1,815,292	\$678,937

Project Phase	Expenditures: FFY 2022-2025 (x1000)		
	Total	Federal	Local
H RTP	\$919,800	\$738,800	\$181,000
PLN	\$111	\$88	\$23
PE1	\$69,804	\$50,613	\$19,191
PE2	\$52,185	\$19,183	\$33,002
PE1/PE2	\$11,000	\$6,800	\$4,200
PE2/CON	\$250	\$200	\$50
DES	\$13,252	\$8,799	\$4,453
ROW	\$17,737	\$12,155	\$5,582
ADVCON	\$0	\$260,923	-\$260,923
CON	\$1,002,796	\$385,240	\$617,556
EQP	\$300,939	\$249,311	\$51,628
OPR	\$78,357	\$64,481	\$13,876
INSP	\$27,998	\$18,699	\$9,299
TOTAL	\$2,494,229	\$1,815,292	\$678,937

PROJECTS

The following projects are grouped by the type of federal funding (e.g., FHWA) and project sponsor (e.g., HDOT).

FHWA Funded Projects: Hawaii Department of Transportation



Source: Esri, Maxar, GeoEye, Earthstar Geographics, CNES/Airbus DS, USDA, USGS, AeroGRID, IGN, and the GIS User Community

Project Description:

Construction of traffic counting stations for traffic data gathering and planning purposes. There is a separate phase shown for the rest of the islands in Statewide section of the STIP. This is a part of phase 2 of the Statewide project. The project will collect required Highway Performance Monitoring System (HPMS) data. This project has been removed as the scope of work will be reduced and combined in statewide project S23.

Mile Post/s:

Complete Streets (CS):

Project will implement: Not applicable.

Existing Feature/s: Not applicable.

ORTP Project #: OS63

Neighborhood(s): Various Locations

Estimated Total Project Cost: \$0

Total Project Cost Notes:

(May include project costs outside of the 4-year TIP and 2 informational years.)

Project Sponsor: State of Hawaii (FHWA Funded)

Agency Responsible for Carrying Out Project/Phase:

Hawaii Department of Transportation

													FOR INFORMATION ONLY						Funding Category
FFY 2022			FFY 2023			FFY 2024			FFY 2025			FFY 2026			FFY 2027				
	Total	Federal	Local	Total	Federal	Local	Total	Federal	Local	Total	Federal	Local	Total	Federal	Local	Total	Federal	Local	
Phase	(x\$1000)	(x\$1000)	(x\$1000)	(x\$1000)	(x\$1000)	(x\$1000)	(x\$1000)	(x\$1000)	(x\$1000)	(x\$1000)	(x\$1000)	(x\$1000)	(x\$1000)	(x\$1000)	(x\$1000)	(x\$1000)	(x\$1000)	(x\$1000)	
CON	0	0	0	0	0	0	0	0	0	0	0	0	0	0	0	0	0	0	STBG
ADVCON	0	0	0	0	0	0	0	0	0	0	0	0	0	0	0	0	0	0	STBG
Total	0	0	0	0	0	0	0	0	0	0	0	0	0	0	0	0	0	0	



Source: Esri, Maxar, GeoEye, Earthstar Geographics, CNES/Airbus DS, USDA, USGS, AeroGRID, IGN, and the GIS User Community

Project Description:

Upgrade signal equipment to improve programming and optimization, to help improve traffic flow, reduce congestion, and prevent failures & downtime. Upgrades include replace old/damaged signal poles, underground conduits & wiring, signal controllers, and other equipment.

Mile Post/s:

Complete Streets (CS):

Project will implement: No information available.

Existing Feature/s: No information available.

ORTP Project #: OS80

Neighborhood(s): Various Locations

Estimated Total Project Cost: \$81,500,000

Total Project Cost Notes:

(May include project costs outside of the 4-year TIP and 2 informational years.)

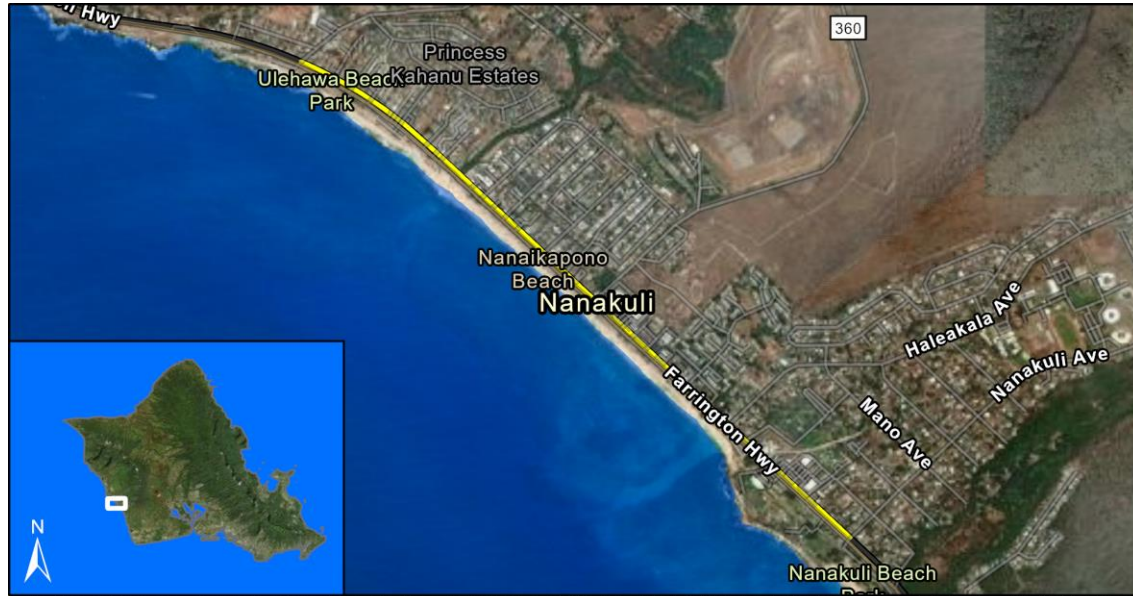
Project Sponsor: State of Hawaii (FHWA Funded)

Agency Responsible for Carrying Out Project/Phase:

Hawaii Department of Transportation

													FOR INFORMATION ONLY						Funding Category
Phase	FFY 2022			FFY 2023			FFY 2024			FFY 2025			FFY 2026			FFY 2027			
	Total	Federal	Local	Total	Federal	Local	Total	Federal	Local	Total	Federal	Local	Total	Federal	Local	Total	Federal	Local	
	(x\$1000)	(x\$1000)	(x\$1000)	(x\$1000)	(x\$1000)	(x\$1000)	(x\$1000)	(x\$1000)	(x\$1000)	(x\$1000)	(x\$1000)	(x\$1000)	(x\$1000)	(x\$1000)	(x\$1000)	(x\$1000)	(x\$1000)	(x\$1000)	
CON (2024) - ph 2, 2A, 2B, 2C : CON (2025) - ph 3 : CON (2026) - ph 4 and 4A : CON (2027) - ph 5																			
CON	0	0	0	0	0	0	27,000	500	26,500	7,500	1,000	6,500	25,000	20,000	5,000	11,500	9,200	2,300	STBG
ADVCON	0	0	0	0	0	0	0	0	0	0	6,600	-6,600	0	8,000	-8,000	0	11,500	-11,500	STBG
PE1/2 (2023) - ph 2b and 2C : PE1/2 (2024) - ph 3 : PE1/2 (2025) - ph 4 and 4A : PE1/2 (2026) - ph 5																			
PE1/PE2	0	0	0	4,500	3,600	900	1,500	200	1,300	5,000	3,000	2,000	2,500	500	2,000	0	0	0	STBG
ADVCON	0	0	0	0	0	0	0	0	0	0	1,000	-1,000	0	1,000	-1,000	0	2,000	-2,000	STBG
Total	0	0	0	4,500	3,600	900	28,500	700	27,800	12,500	11,600	900	27,500	29,500	-2,000	11,500	22,700	-11,200	

OS-21-53 Farrington Highway (RTE 93) Widening (Helelua St to Mohihi St) & Sidewalk (Hakimo Rd to Nanakuli Ave) Improvements



Source: Esri, Maxar, GeoEye, Earthstar Geographics, CNES/Airbus DS, USDA, USGS, AeroGRID, IGN, and the GIS User Community, Sources: Esri, HERE, Garmin, FAO, NOAA, USGS, © OpenStreetMap contributors, and the GIS User Community

Project Description:

Install a 5th lane on Farrington Highway from Helelua Street to Mohihi Street and construct a new sidewalk from Hakimo Rd to Nanakuli Ave.

Mile Post/s: MP 5.62 to 6.32

Complete Streets (CS):

Project will implement: No information available.

Existing Feature/s: No information available.

ORTP Project #: O-21-53

Neighborhood(s): Nanakuli-Mailii

Estimated Total Project Cost: \$51,500,000

Total Project Cost Notes:

(May include project costs outside of the 4-year TIP and 2 informational years.)

Project Sponsor: State of Hawaii (FHWA Funded)

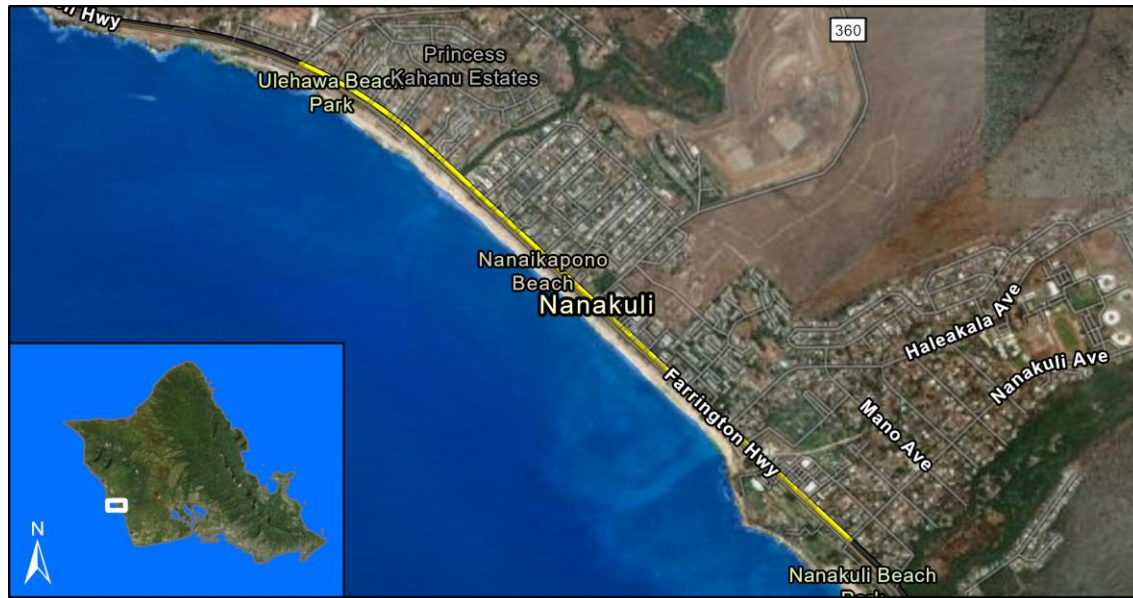
Agency Responsible for Carrying Out Project/Phase:

Hawaii Department of Transportation

FOR INFORMATION ONLY

Phase	FFY 2022			FFY 2023			FFY 2024			FFY 2025			FFY 2026			FFY 2027			Funding Category
	Total (x\$1000)	Federal (x\$1000)	Local (x\$1000)	Total (x\$1000)	Federal (x\$1000)	Local (x\$1000)	Total (x\$1000)	Federal (x\$1000)	Local (x\$1000)	Total (x\$1000)	Federal (x\$1000)	Local (x\$1000)	Total (x\$1000)	Federal (x\$1000)	Local (x\$1000)	Total (x\$1000)	Federal (x\$1000)	Local (x\$1000)	
CON	0	0	0	0	0	0	0	0	0	0	0	0	48,000	38,400	9,600	0	0	0	NHPP
ADVCON	0	0	0	0	0	0	0	0	0	0	0	0	0	0	0	0	5,000	-5,000	NHPP
Total	0	0	0	0	0	0	0	0	0	0	0	0	48,000	38,400	9,600	0	5,000	-5,000	

OS-22-62 Farrington Highway (RTE 93) Sidewalk Improvements, Hakimo Rd to Nanakuli Ave, MP 6.89 to MP 5.06



Source: Esri, Maxar, GeoEye, Earthstar Geographics, CNES/Airbus DS, USDA, USGS, AeroGRID, IGN, and the GIS User Community, Sources: Esri, HERE, Garmin, FAO, NOAA, USGS, © OpenStreetMap contributors, and the GIS User Community

Project Description:

Construct new PCC sidewalk and ramps, drainage facilities, utility relocations and adjustments, driveway adjustments, grade adjustment walls, modifications/adjustments to existing traffic appurtenances (signs, traffic signals, etc). This project has been removed as the scope of work will be covered in OS-21-53 Farrington Hwy Widening, Helelua St to Mohihi St.

Mile Post/s: 6.89 to 5.06

Complete Streets (CS):

Project will implement: No information available.

Existing Feature/s: No information available.

ORTP Project #: O-21-26

Neighborhood(s): Nanakuli-Maili

Estimated Total Project Cost: \$0

Total Project Cost Notes:

(May include project costs outside of the 4-year TIP and 2 informational years.)

Project Sponsor: State of Hawaii (FHWA Funded)

Agency Responsible for Carrying Out Project/Phase:

Hawaii Department of Transportation

													FOR INFORMATION ONLY						Funding Category
FFY 2022			FFY 2023			FFY 2024			FFY 2025			FFY 2026			FFY 2027				
	Total	Federal	Local	Total	Federal	Local	Total	Federal	Local	Total	Federal	Local	Total	Federal	Local	Total	Federal	Local	
Phase	(x\$1000)	(x\$1000)	(x\$1000)	(x\$1000)	(x\$1000)	(x\$1000)	(x\$1000)	(x\$1000)	(x\$1000)	(x\$1000)	(x\$1000)	(x\$1000)	(x\$1000)	(x\$1000)	(x\$1000)	(x\$1000)	(x\$1000)	(x\$1000)	
CON	0	0	0	0	0	0	0	0	0	0	0	0	0	0	0	0	0	0	NHPP
ADVCON	0	0	0	0	0	0	0	0	0	0	0	0	0	0	0	0	0	0	NHPP
Total	0	0	0	0	0	0	0	0	0	0	0	0	0	0	0	0	0	0	

OS-23-65 Farrington Highway (Route 93), Bridge Rehabilitation, Mailiili Stream Bridge



Resource Mapping Hawaii, Maxar, Esri, HERE, Garmin, SafeGraph, METI/NASA, USGS, EPA, US Census Bureau, USDA, Earthstar Geographics, Esri, HERE, Garmin, FAO, NOAA, USGS, EPA

Project Description:

Rehabilitate Mailiili Stream Bridge.

Mile Post/s:

Complete Streets (CS):

Project will implement: Not applicable.

Existing Feature/s: Not applicable.

ORTP Project #: O-21-14

Neighborhood(s): Nanakuli-Maili

Estimated Total Project Cost: \$14,220,000

Total Project Cost Notes:

(May include project costs outside of the 4-year TIP and 2 informational years.)

Project Sponsor: State of Hawaii (FHWA Funded)

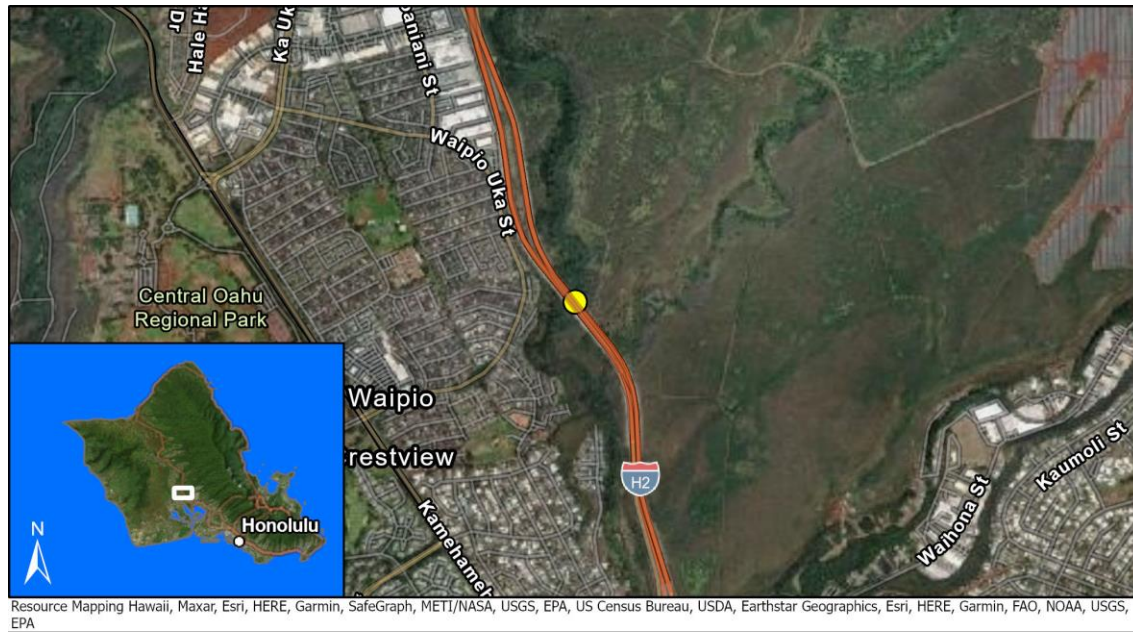
Agency Responsible for Carrying Out Project/Phase:

Hawaii Department of Transportation

FOR INFORMATION ONLY

Phase	FFY 2022			FFY 2023			FFY 2024			FFY 2025			FFY 2026			FFY 2027			Funding Category
	Total (x\$1000)	Federal (x\$1000)	Local (x\$1000)	Total (x\$1000)	Federal (x\$1000)	Local (x\$1000)	Total (x\$1000)	Federal (x\$1000)	Local (x\$1000)	Total (x\$1000)	Federal (x\$1000)	Local (x\$1000)	Total (x\$1000)	Federal (x\$1000)	Local (x\$1000)	Total (x\$1000)	Federal (x\$1000)	Local (x\$1000)	
PE1	0	0	0	1,250	1,000	250	0	0	0	0	0	0	0	0	0	0	0	0	HIP-BFP
PE2	0	0	0	0	0	0	0	0	0	850	680	170	0	0	0	0	0	0	HIP-BFP
ROW	0	0	0	0	0	0	0	0	0	120	96	24	0	0	0	0	0	0	HIP-BFP
CON	0	0	0	0	0	0	0	0	0	0	0	0	0	0	0	12,000	600	11,400	HIP-BFP
Total	0	0	0	1,250	1,000	250	0	0	0	970	776	194	0	0	0	12,000	600	11,400	

OS-23-66 Interstate Route H-2, Panakauahi 3-144 and 4-144 Culvert Rehabilitation



Project Description:

Rehabilitation of 3 144" and 4 144" culverts under H2.

Mile Post/s:

Complete Streets (CS):

Project will implement: Not applicable.

Existing Feature/s: Not applicable.

ORTP Project #: O-21-14

Neighborhood(s): Waipahu

Estimated Total Project Cost: \$13,000,000

Total Project Cost Notes:

(May include project costs outside of the 4-year TIP and 2 informational years.)

Project Sponsor: State of Hawaii (FHWA Funded)

Agency Responsible for Carrying Out Project/Phase:

Hawaii Department of Transportation

													FOR INFORMATION ONLY						Funding Category
FFY 2022			FFY 2023			FFY 2024			FFY 2025			FFY 2026			FFY 2027				
	Total	Federal	Local	Total	Federal	Local	Total	Federal	Local	Total	Federal	Local	Total	Federal	Local	Total	Federal	Local	
Phase	(x\$1000)	(x\$1000)	(x\$1000)	(x\$1000)	(x\$1000)	(x\$1000)	(x\$1000)	(x\$1000)	(x\$1000)	(x\$1000)	(x\$1000)	(x\$1000)	(x\$1000)	(x\$1000)	(x\$1000)	(x\$1000)	(x\$1000)	(x\$1000)	
CON	0	0	0	0	0	0	12,000	600	11,400	0	0	0	0	0	0	0	0	0	HIP-BFP
ADVCON	0	0	0	0	0	0	0	0	0	0	3,000	-3,000	0	3,000	-3,000	0	3,000	-3,000	HIP-BFP
Total	0	0	0	0	0	0	12,000	600	11,400	0	3,000	-3,000	0	3,000	-3,000	0	3,000	-3,000	

OS-23-67 Interstate Route H-3, Luluku Culvert Repair, Vicinity of Interstate Route H-3 (MP 8.67) and Likelike Hwy



Resource Mapping Hawaii, Maxar, Earthstar Geographics, Esri, HERE, Garmin, FAO, NOAA, USGS, EPA, Esri, HERE, Garmin, SafeGraph, GeoTechnologies, Inc, METI/NASA, USGS, EPA, US Census Bureau, USDA

Project Description:

Replacement and upgrade of culvert beneath the H-3 service road in Luluku

Mile Post/s:

Complete Streets (CS):

Project will implement: Not Applicable.

Existing Feature/s: Not Applicable.

ORTP Project #: O-21-14

Neighborhood(s): Kaneohe

Estimated Total Project Cost: \$6,000,000

Total Project Cost Notes:

(May include project costs outside of the 4-year TIP and 2 informational years.)

Project Sponsor: State of Hawaii (FHWA Funded)

Agency Responsible for Carrying Out Project/Phase:

Hawaii Department of Transportation

FOR INFORMATION ONLY

Phase	FFY 2022			FFY 2023			FFY 2024			FFY 2025			FFY 2026			FFY 2027			Funding Category
	Total (x\$1000)	Federal (x\$1000)	Local (x\$1000)	Total (x\$1000)	Federal (x\$1000)	Local (x\$1000)	Total (x\$1000)	Federal (x\$1000)	Local (x\$1000)	Total (x\$1000)	Federal (x\$1000)	Local (x\$1000)	Total (x\$1000)	Federal (x\$1000)	Local (x\$1000)	Total (x\$1000)	Federal (x\$1000)	Local (x\$1000)	
CON	0	0	0	0	0	0	5,000	500	4,500	0	0	0	0	0	0	0	0	0	NHPP
ADVCON	0	0	0	0	0	0	0	0	0	0	1,500	-1,500	0	2,000	-2,000	0	0	0	NHPP
Total	0	0	0	0	0	0	5,000	500	4,500	0	1,500	-1,500	0	2,000	-2,000	0	0	0	

OS-23-68 Kamehameha Highway (Route 80), Bridge Rehabilitation, NF Kaukonahua (Karsten Thot) Bridge



Project Description:
Rehabilitate Karsten Thot Bridge.

Mile Post/s:

Complete Streets (CS):
Project will implement: Not applicable.
Existing Feature/s: Not applicable.

ORTP Project #: O-21-14

Neighborhood(s): Wahiawa

Estimated Total Project Cost: \$30,912,000

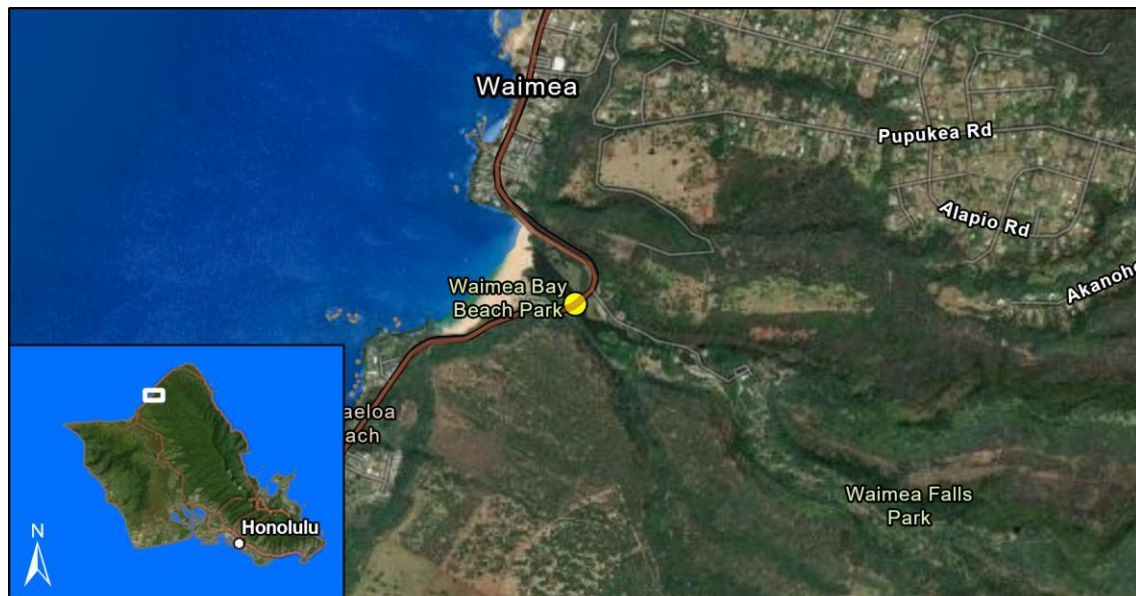
Total Project Cost Notes:
(May include project costs outside of the 4-year TIP and 2 informational years.)

Project Sponsor: State of Hawaii (FHWA Funded)

Agency Responsible for Carrying Out Project/Phase:
Hawaii Department of Transportation

Phase	FFY 2022			FFY 2023			FFY 2024			FFY 2025			FOR INFORMATION ONLY						Funding Category
	Total (x\$1000)	Federal (x\$1000)	Local (x\$1000)	Total (x\$1000)	Federal (x\$1000)	Local (x\$1000)	Total (x\$1000)	Federal (x\$1000)	Local (x\$1000)	Total (x\$1000)	Federal (x\$1000)	Local (x\$1000)	FFY 2026			FFY 2027			
													Total (x\$1000)	Federal (x\$1000)	Local (x\$1000)	Total (x\$1000)	Federal (x\$1000)	Local (x\$1000)	
PE1	0	0	0	0	0	0	2,500	2,000	500	0	0	0	0	0	0	0	0	0	HIP-BFP
PE2	0	0	0	0	0	0	0	0	0	0	0	0	1,300	1,040	260	0	0	0	HIP-BFP
ROW	0	0	0	0	0	0	0	0	0	0	0	0	112	90	22	0	0	0	HIP-BFP
CON	0	0	0	0	0	0	0	0	0	0	0	0	0	0	0	27,000	1,600	25,400	HIP-BFP
Total	0	0	0	0	0	0	2,500	2,000	500	0	0	0	1,412	1,130	282	27,000	1,600	25,400	

OS-23-69 Kamehameha Hwy (Route 83), Rehabilitation, Waimea Stream Bridge



Resource Mapping Hawaii, Maxar, Esri, HERE, Garmin, SafeGraph, METI/NASA, USGS, EPA, US Census Bureau, USDA, Earthstar Geographics, Esri, HERE, Garmin, FAO, NOAA, USGS, EPA

Project Description:

Rehabilitation of Waimea Stream Bridge

Mile Post/s:

Complete Streets (CS):

Project will implement: Not Applicable.

Existing Feature/s: Not Applicable.

ORTP Project #: O-21-14

Neighborhood(s): North Shore

Estimated Total Project Cost: \$5,664,000

Total Project Cost Notes:

(May include project costs outside of the 4-year TIP and 2 informational years.)

Project Sponsor: State of Hawaii (FHWA Funded)

Agency Responsible for Carrying Out Project/Phase:

Hawaii Department of Transportation

FOR INFORMATION ONLY

Phase	FFY 2022			FFY 2023			FFY 2024			FFY 2025			FFY 2026			FFY 2027			Funding Category
	Total (x\$1000)	Federal (x\$1000)	Local (x\$1000)	Total (x\$1000)	Federal (x\$1000)	Local (x\$1000)	Total (x\$1000)	Federal (x\$1000)	Local (x\$1000)	Total (x\$1000)	Federal (x\$1000)	Local (x\$1000)	Total (x\$1000)	Federal (x\$1000)	Local (x\$1000)	Total (x\$1000)	Federal (x\$1000)	Local (x\$1000)	
PE1	0	0	0	0	0	0	1,000	800	200	0	0	0	0	0	0	0	0	0	HIP-BFP
PE2	0	0	0	0	0	0	0	0	0	0	0	0	270	216	54	0	0	0	HIP-BFP
ROW	0	0	0	0	0	0	0	0	0	0	0	0	194	108	86	0	0	0	HIP-BFP
CON	0	0	0	0	0	0	0	0	0	0	0	0	0	0	0	4,200	360	3,840	HIP-BFP
Total	0	0	0	0	0	0	1,000	800	200	0	0	0	464	324	140	4,200	360	3,840	

OS-23-70 Likelike Highway (Rte 63), Tunnel Rehabilitation, Wilson Tunnels



Resource Mapping Hawaii, Maxar, Earthstar Geographics, Esri, HERE, Garmin, FAO, NOAA, USGS, EPA, Esri, HERE, Garmin, SafeGraph, GeoTechnologies, Inc, METI/NASA, USGS, EPA, US Census Bureau, USDA

Project Description:

Rehabilitation of Wilson Tunnels on Likelike Highway, Route 63.

Mile Post/s:

Complete Streets (CS):

Project will implement: Not Applicable.

Existing Feature/s: Not Applicable.

ORTP Project #: O-21-14

Neighborhood(s): Kalihi Valley

Estimated Total Project Cost: \$47,320,000

Total Project Cost Notes:

(May include project costs outside of the 4-year TIP and 2 informational years.)

Project Sponsor: State of Hawaii (FHWA Funded)

Agency Responsible for Carrying Out Project/Phase:

Hawaii Department of Transportation

FOR INFORMATION ONLY

Phase	FFY 2022			FFY 2023			FFY 2024			FFY 2025			FFY 2026			FFY 2027			Funding Category
	Total (x\$1000)	Federal (x\$1000)	Local (x\$1000)	Total (x\$1000)	Federal (x\$1000)	Local (x\$1000)	Total (x\$1000)	Federal (x\$1000)	Local (x\$1000)	Total (x\$1000)	Federal (x\$1000)	Local (x\$1000)	Total (x\$1000)	Federal (x\$1000)	Local (x\$1000)	Total (x\$1000)	Federal (x\$1000)	Local (x\$1000)	
PE1	0	0	0	0	0	0	1,200	960	240	0	0	0	0	0	0	0	0	0	NHPP
PE2	0	0	0	0	0	0	0	0	0	1,000	800	200	0	0	0	0	0	0	NHPP
ROW	0	0	0	0	0	0	0	0	0	120	96	24	0	0	0	0	0	0	NHPP
CON	0	0	0	0	0	0	0	0	0	0	0	0	45,000	18,000	27,000	0	0	0	NHPP
ADVCON	0	0	0	0	0	0	0	0	0	0	0	0	0	0	0	0	18,000	-18,000	NHPP
Total	0	0	0	0	0	0	1,200	960	240	1,120	896	224	45,000	18,000	27,000	0	18,000	-18,000	

FHWA Funded Projects: City and County of Honolulu



Source: Esri, Maxar, GeoEye, Earthstar Geographics, CNES/Airbus DS, USDA, USGS, AeroGRID, IGN, and the GIS User Community

Project Description:

The Transportation Alternatives (TA) Set-Aside is a competitive grant program that provides funding for programs and projects defined as transportation alternatives, including on- and off-road pedestrian and bicycle facilities, and infrastructure projects for improving non-driver access to public transportation and enhanced mobility, and community improvement activities. Locations to be determined by the OahuMPO TA Set-Aside Project Evaluation and Ranking process. HART projects may be flexed from FHWA to FTA.

Mile Post/s:

Complete Streets (CS):

Project will implement: Project will incorporate complete streets features for pedestrian and bicycle use.

Existing Feature/s: No information available.

ORTP Project #: OC25

Neighborhood(s): McCully-Moiliili, Various Locations

Estimated Total Project Cost: \$66,400,000

Total Project Cost Notes:

(May include project costs outside of the 4-year TIP and 2 informational years.)

Project Sponsor: City and County of Honolulu

Agency Responsible for Carrying Out Project/Phase:

City Department of Transportation Services

													FOR INFORMATION ONLY						
	FFY 2022			FFY 2023			FFY 2024			FFY 2025			FFY 2026			FFY 2027			
	Total	Federal	Local	Total	Federal	Local	Total	Federal	Local	Total	Federal	Local	Total	Federal	Local	Total	Federal	Local	Funding Category
Phase	(x\$1000)	(x\$1000)	(x\$1000)	(x\$1000)	(x\$1000)	(x\$1000)	(x\$1000)	(x\$1000)	(x\$1000)	(x\$1000)	(x\$1000)	(x\$1000)	(x\$1000)	(x\$1000)	(x\$1000)	(x\$1000)	(x\$1000)	(x\$1000)	
Ala Wai Bridge Project																			
PE2	0	0	0	0	0	0	2,140	1,712	428	0	0	0	0	0	0	0	0	0	TA
CON	0	0	0	0	0	0	35,841	28,673	7,168	13,052	10,442	2,610	0	0	0	0	0	0	FHWA Grant
CON	0	0	0	0	0	0	0	0	0	2,345	1,876	469	0	0	0	0	0	0	TA
INSP	0	0	0	0	0	0	5,378	4,302	1,076	2,497	1,998	499	0	0	0	0	0	0	FHWA Grant
Rail Station Multimodal Access Improvements - Halawa (Aloha Stadium) Station and Waiawa (Pearl Highlands) Station																			
PE2	0	0	0	625	500	125	0	0	0	0	0	0	0	0	0	0	0	0	TA
CON	0	0	0	2,500	2,000	500	0	0	0	0	0	0	0	0	0	0	0	0	TA
CON	0	0	0	1,750	1,400	350	0	0	0	0	0	0	0	0	0	0	0	0	TA
INSP	0	0	0	226	181	45	0	0	0	0	0	0	0	0	0	0	0	0	TA

OC25

Transportation Alternatives Program (MPO)

Total	0	0	0	5,101	4,081	1,020	43,359	34,687	8,672	17,894	14,316	3,578	0	0	0	0	0	0
-------	---	---	---	-------	-------	-------	--------	--------	-------	--------	--------	-------	---	---	---	---	---	---



Source: Esri, Maxar, GeoEye, Earthstar Geographics, CNES/Airbus DS, USDA, USGS, AeroGRID, IGN, and the GIS User Community

Various Locations - Islandwide

Project Description:

The Federal Lands Access Program (FLAP) was established to improve transportation facilities that provide access to, are adjacent to, or are located within Federal lands. The Access Program supplements State and local resources for public roads, transit systems, and other transportation facilities, with an emphasis on high-use recreation sites and economic generators. This project has been removed due to alignment issues.

Mile Post/s: Not applicable

Complete Streets (CS):

Project will implement: Project improves pedestrian and bicycle access.

Existing Feature/s: No information available

ORTP Project #: OC29

Neighborhood(s): Island wide, To Be Determined

Estimated Total Project Cost: \$0

Total Project Cost Notes:

(May include project costs outside of the 4-year TIP and 2 informational years.)

Project Sponsor: City and County of Honolulu

Agency Responsible for Carrying Out Project/Phase:

City Department of Transportation Services

													FOR INFORMATION ONLY						Funding Category
FFY 2022			FFY 2023			FFY 2024			FFY 2025			FFY 2026			FFY 2027				
	Total	Federal	Local	Total	Federal	Local	Total	Federal	Local	Total	Federal	Local	Total	Federal	Local	Total	Federal	Local	
Phase	(x\$1000)	(x\$1000)	(x\$1000)	(x\$1000)	(x\$1000)	(x\$1000)	(x\$1000)	(x\$1000)	(x\$1000)	(x\$1000)	(x\$1000)	(x\$1000)	(x\$1000)	(x\$1000)	(x\$1000)	(x\$1000)	(x\$1000)	(x\$1000)	
PE2	0	0	0	0	0	0	0	0	0	0	0	0	0	0	0	0	0	0	FLAP
CON	0	0	0	0	0	0	0	0	0	0	0	0	0	0	0	0	0	0	FLAP
Total	0	0	0	0	0	0	0	0	0	0	0	0	0	0	0	0	0	0	

FTA: City and County of Honolulu

OC13 Bus and Handi-Van Acquisition Program



Project Description:

Purchase replacement transit buses and Handi-Van vehicles.

Mile Post/s: Not applicable

Complete Streets (CS):

Project will implement: Not applicable.

Existing Feature/s: Not applicable.

ORTP Project #: OC13

Neighborhood(s): Various Locations

Estimated Total Project Cost: \$383,358,000

Total Project Cost Notes: Project funds may be flexed from FHWA to FTA.
(May include project costs outside of the 4-year TIP and 2 informational years.)

Project Sponsor: City and County of Honolulu

Agency Responsible for Carrying Out Project/Phase:

City Department of Transportation Services

													FOR INFORMATION ONLY						
	FFY 2022			FFY 2023			FFY 2024			FFY 2025			FFY 2026			FFY 2027			
	Total	Federal	Local	Total	Federal	Local	Total	Federal	Local	Total	Federal	Local	Total	Federal	Local	Total	Federal	Local	Funding Category
Phase	(x\$1000)	(x\$1000)	(x\$1000)	(x\$1000)	(x\$1000)	(x\$1000)	(x\$1000)	(x\$1000)	(x\$1000)	(x\$1000)	(x\$1000)	(x\$1000)	(x\$1000)	(x\$1000)	(x\$1000)	(x\$1000)	(x\$1000)	(x\$1000)	
OPR	49	39	10	49	39	10	49	39	10	49	39	10	49	39	10	49	39	10	\$5307/\$5340
2022																			
EQP	50,404	40,316	10,088	0	0	0	0	0	0	0	0	0	0	0	0	0	0	0	\$5307/\$5340
EQP	12,500	10,000	2,500	0	0	0	0	0	0	0	0	0	0	0	0	0	0	0	\$5307/\$5340
EQP	618	494	124	0	0	0	0	0	0	0	0	0	0	0	0	0	0	0	\$5310
EQP	1,763	1,410	353	0	0	0	0	0	0	0	0	0	0	0	0	0	0	0	\$5337
EQP	4,325	3,460	865	0	0	0	0	0	0	0	0	0	0	0	0	0	0	0	\$5339
2023																			
EQP	0	0	0	0	0	0	23,529	20,000	3,529	0	0	0	0	0	0	0	0	0	\$5307/\$5340
EQP	0	0	0	26,971	22,926	4,045	12,434	10,245	2,189	0	0	0	0	0	0	0	0	0	\$5307/\$5340
EQP	0	0	0	12,500	10,000	2,500	0	0	0	0	0	0	0	0	0	0	0	0	\$5307/\$5340
EQP	0	0	0	121	103	18	0	0	0	0	0	0	0	0	0	0	0	0	\$5337
EQP	0	0	0	4,581	3,894	687	0	0	0	0	0	0	0	0	0	0	0	0	\$5337
EQP	0	0	0	0	0	0	13,994	11,755	2,239	0	0	0	0	0	0	0	0	0	\$5339
EQP	0	0	0	3,814	3,051	763	0	0	0	0	0	0	0	0	0	0	0	0	\$5339
EQP	0	0	0	12,508	10,632	1,876	0	0	0	0	0	0	0	0	0	0	0	0	\$5339
EQP	0	0	0	23,694	20,000	3,694	0	0	0	0	0	0	0	0	0	0	0	0	\$5339

OC13 Bus and Handi-Van Acquisition Program

FOR INFORMATION ONLY																			
Phase	FFY 2022			FFY 2023			FFY 2024			FFY 2025			FFY 2026			FFY 2027			Funding Category
	Total (x\$1000)	Federal (x\$1000)	Local (x\$1000)	Total (x\$1000)	Federal (x\$1000)	Local (x\$1000)	Total (x\$1000)	Federal (x\$1000)	Local (x\$1000)	Total (x\$1000)	Federal (x\$1000)	Local (x\$1000)	Total (x\$1000)	Federal (x\$1000)	Local (x\$1000)	Total (x\$1000)	Federal (x\$1000)	Local (x\$1000)	
2023																			
EQP	0	0	0	6,490	4,712	1,778	0	0	0	0	0	0	0	0	0	0	0	0	\$5339
EQP	0	0	0	10,000	10,000	0	0	0	0	0	0	0	0	0	0	0	0	0	HIP-CPF/CDS
INSP	0	0	0	481	385	96	0	0	0	0	0	0	0	0	0	0	0	0	\$5339
2024																			
EQP	0	0	0	0	0	0	23,694	20,000	3,694	0	0	0	0	0	0	0	0	0	\$5339
2025																			
EQP	0	0	0	0	0	0	0	0	0	12,839	10,271	2,568	0	0	0	0	0	0	\$5307/\$5340
EQP	0	0	0	0	0	0	0	0	0	444	355	89	0	0	0	0	0	0	\$5310
EQP	0	0	0	0	0	0	0	0	0	1,963	1,570	393	0	0	0	0	0	0	\$5337
EQP	0	0	0	0	0	0	0	0	0	4,084	3,267	817	0	0	0	0	0	0	\$5339
EQP	0	0	0	0	0	0	0	0	0	23,694	20,000	3,694	0	0	0	0	0	0	\$5339
2026																			
EQP	0	0	0	0	0	0	0	0	0	0	0	0	16,333	13,066	3,267	0	0	0	\$5307/\$5340
EQP	0	0	0	0	0	0	0	0	0	0	0	0	1,354	1,083	271	0	0	0	\$5310
EQP	0	0	0	0	0	0	0	0	0	0	0	0	5,438	4,350	1,088	0	0	0	\$5337
EQP	0	0	0	0	0	0	0	0	0	0	0	0	481	385	96	0	0	0	\$5339
EQP	0	0	0	0	0	0	0	0	0	0	0	0	23,694	20,000	3,694	0	0	0	\$5339
2027																			
EQP	0	0	0	0	0	0	0	0	0	0	0	0	0	0	0	17,206	13,765	3,441	\$5307/\$5340
EQP	0	0	0	0	0	0	0	0	0	0	0	0	0	0	0	1,380	1,104	276	\$5310
EQP	0	0	0	0	0	0	0	0	0	0	0	0	0	0	0	5,548	4,438	1,110	\$5337
EQP	0	0	0	0	0	0	0	0	0	0	0	0	0	0	0	491	393	98	\$5339
EQP	0	0	0	0	0	0	0	0	0	0	0	0	0	0	0	23,694	20,000	3,694	\$5339
Total	69,659	55,719	13,940	101,209	85,742	15,467	73,700	62,039	11,661	43,073	35,502	7,571	47,349	38,923	8,426	48,368	39,739	8,629	

APPENDICIES

Appendix B: Scoring of New Projects and Programs

New projects and programs are scored according to the prioritization process described in [Appendix A](#).

The table below shows the scoring for each new project and program. Highlighted in yellow are the projects listed in this revision.

Rank	Project #	Project Name	Agency Responsible	Estimated Total Project Cost	Total Evaluation Score	TIP
1	OC-22-60	Capital Infrastructure Program	DTS	\$156,250,000	64	TIP FFYs 2022-2025 Rev 11
2	OS-21-43	Kamehameha Highway (Route 99) Seismic Retrofit, Pearl Harbor Interchange, Structure #2	HDOT	\$5,000,000	58	TIP FFYs 2022-2025
2	OS-21-51	Moanalua Freeway, (Interstate Route H-201) Seismic Retrofit, Puuloa Interchange (Five Structures)	HDOT	\$15,000,000	58	TIP FFYs 2022-2025
2	OS-21-52	Likelike Highway (Route 63) Seismic Retrofit, Kalihi Stream Bridges	HDOT	\$11,300,000	58	TIP FFYs 2022-2025
5	OC-22-62	Kakaako Special District Roadway Improvement	DTS	\$50,000,000	56	TIP FFYs 2022-2025 Rev 11
6	OC-22-63	Safe Streets and Roads for All (SS4A)	DTS	\$101,000,000	54	TIP FFYs 2022-2025 Rev 11
7	OC-22-69	Multimodal Transit Fare Collection System	DTS	\$10,344,000	48	TIP FFYs 2022-2025 Rev 11
9	OC-22-66	Intermodal Connectivity - TA Set-Aside (State)	DTS	\$43,250,000	47	TIP FFYs 2022-2025 Rev 11
9	OC-22-67	Intermodal Connectivity Improvements	DTS	\$132,000,000	47	TIP FFYs 2022-2025 Rev 11
11	OC-22-65	Bridge Program	DDC	\$20,000,000	46	TIP FFYs 2022-2025 Rev 11
12	OC-21-54	Kalaeloa Boulevard Railroad Improvements	DTS	\$1,480,000	45	TIP FFYs 2022-2025
12	OS-22-64	Whitmore Ave (RTE 7012) Sidewalk Improvements, Phase 2, Ihiihi Ave to Whitmore Community Center, MP 0.72 to MP 1.04	HDOT	\$3,100,000	45	TIP FFYs 2022-2025 Rev 6
14	OS-23-68	Kamehameha Highway (Route 80), Bridge Rehabilitation, NF Kaukonahua (Karsten Thot) Bridge	HDOT	\$30,912,000	44	TIP FFYs 2022-2025 Rev 15
14	OS-23-65	Farrington Highway (Route 93), Bridge Rehabilitation, Mailiili Stream Bridge	HDOT	\$14,220,000	44	TIP FFYs 2022-2025 Rev 15
14	OS-23-66	Interstate Route H-2, Panakauahi 3-144 and 4-144 Culvert Rehabilitation	HDOT	\$13,000,000	44	TIP FFYs 2022-2025 Rev 15
14	OS-23-67	Interstate Route H-3, Luluku Culvert Repair, Vicinity of Interstate Route H-3 (MP 8.67) and Likelike Hwy	HDOT	\$6,000,000	44	TIP FFYs 2022-2025 Rev 15
14	OS-23-69	Kamehameha Hwy (Route 83), Rehabilitation, Waimea Stream Bridge	HDOT	\$5,664,000	44	TIP FFYs 2022-2025 Rev 15
14	OS-23-70	Likelike Highway (Rte 63), Tunnel Rehabilitation, Wilson Tunnels	HDOT	\$47,320,000	44	TIP FFYs 2022-2025 Rev 15

Rank	Project #	Project Name	Agency Responsible	Estimated Total Project Cost	Total Evaluation Score	TIP
20	OC-22-68	Electrification of Transportation Infrastructure	DDC	\$86,000,000	43	TIP FFYs 2022-2025 Rev 11
21	OC-22-61	Honolulu Transportation Demand Management (TDM) Plan	DTS	\$5,000,000	41	TIP FFYs 2022-2025 Rev 11
22	OS-21-44	Pali Highway Rockfall Mitigation, Vicinity of MP 6.10 to MP 6.55	HDOT	\$13,329,000	40	TIP FFYs 2022-2025
22	OS-21-45	Pali Highway, Rockfall Mitigation, Vicinity of MP 5.9 to MP 6.1	HDOT	\$5,000,000	40	TIP FFYs 2022-2025
24	OS-21-57	Fort Barrette Road Railroad Crossing Improvements	HDOT	\$2,750,000	36	TIP FFYs 2022-2025
24	OS-22-61	Farrington Highway (Route 93) Bridge Rehabilitation, Ulehawa Stream Bridge	HDOT	\$25,720,000	36	TIP FFYs 2022-2025 Rev 6
26	OC-21-55	Oahu Traffic Signal Controller Modernization	DTS	\$16,251,000	33	TIP FFYs 2022-2025
27	OC-22-64	Oahu Electric Vehicle Chargers	OCCSR	\$2,450,000	31	TIP FFYs 2022-2025 Rev 11
28	OS-21-47	Interstate Route H-1 Highway Lighting Improvements, Kaimakani Overpass to Gulick Avenue	HDOT	\$40,000,000	30	TIP FFYs 2022-2025
29	OS-22-59	Interstate Route H-3, Unit 7C	HDOT	\$4,400,000	14	TIP FFYs 2022-2025 Rev 3
30	OS-21-49	Harbor Access Road (Route 94)	HDOT	\$142,000,000	13	TIP FFYs 2022-2025
32	OS-22-58	High Friction Surface Treatment on Highway Ramps, Oahu	HDOT	\$2,700,000	10	TIP FFYs 2022-2025 Rev 3
33	OS-21-46	Interstate Route H-1, Kunia Interchange Improvements	HDOT	\$160,000,000	7	TIP FFYs 2022-2025
34	OS-21-50	Interstate Route H-3, Halawa Valley Mitigation, Phase 3, Gate 3 to Native Species Area	HDOT	\$5,500,000	4	TIP FFYs 2022-2025
34	OS-21-56	Interstate Route H-3, Halawa Valley Mitigation, Phase 2, Native Species Area to Tunnel Portal	HDOT	\$5,500,000	4	TIP FFYs 2022-2025
34	OS-22-60	Adaptive Traffic Signal Control Technology & Traffic Signal Controller Installation at Various Locations, Oahu	HDOT	\$41,000,000	4	TIP FFYs 2022-2025 Rev 3
34	OS-22-63	Kamehameha Highway Wetland Enhancement at James Campbell National Wildlife Refuge	HDOT	\$2,500,000	4	TIP FFYs 2022-2025 Rev 6
38	OS-21-53	Farrington Highway (RTE 93) Widening (Helelua St to Mohihi St) & Sidewalk (Hakimo Rd to Nanakuli Ave) Improvements	HDOT	\$51,500,000	-1	TIP FFYs 2022-2025

Appendix C: Title VI and Environmental Justice (T6/EJ) Analysis

The Title VI and Environmental Justice analysis assesses the impact of projects in communities of color and/or communities with low incomes in terms of the planned investments in these areas. All projects with specific locations were mapped and analyzed based on the estimated total project expenditures and per capita expenditures to ensure there is no significant difference in investments between T6/EJ areas and non-T6/EJ areas.

The table below shows that while only 36% of the planned investments are in T6/EJ areas, on a per capita basis, these areas will receive \$10,680 per person which is \$224 more per person compared to non-T6/EJ areas.

T6/EJ Financial Summary*	T6/EJ Block Groups	Non-T6/EJ Block Groups	Diff. vs. Non-T6/EJ
Est. Total Project Expenditures	\$3,985,115,976	\$7,065,635,024	-\$3,080,519,048
% Est. Total Project Expenditures	36%	64%	-28%
# of Block Groups	185	161	24
Per Block Group Expenditures	\$21,541,167	\$43,885,932	-\$22,344,764
Total Population (2010)	373,145	675,788	-302,643
Per Capita Expenditures	\$10,680	\$10,455	\$224

* For the OC16 Honolulu Rail Transit Project, TOD boundaries were used as the specific geography

TIP FFYs 2022-2025 As of Revision 15

Title VI/Environmental Justice (T6/EJ) Areas

