

TRANSPORTATION IMPROVEMENT PROGRAM

FEDERAL FISCAL YEARS 2022 – 2025

Revision 14
Administrative Modification

May 2023



This report was funded in part through grants from the Federal Highway Administration and Federal Transit Administration, U.S. Department of Transportation. The views and opinions of the agency expressed herein do not necessarily state or reflect those of the U.S. Department of Transportation.

Table of Contents

ABBREVIATIONS.....	3
INTRODUCTION.....	6
REVISION PROCESS.....	8
REVISION HISTORY	14
REVISIONS.....	15
PROJECTS.....	21

ABBREVIATIONS

Acronyms

ADA	Americans with Disabilities Act
CAC	Citizen Advisory Committee
CFR	Code of Federal Regulations
CMP	Congestion Management Process
DDC	City and County of Honolulu Department of Design and Construction
DTS	City and County of Honolulu Department of Transportation Services
EJ	Environmental Justice
FHWA	Federal Highway Administration
FTA	Federal Transit Administration
FFY	Federal Fiscal Year (October 1- September 30)
HART	Honolulu Authority for Rapid Transportation
HDOT	Hawaii Department of Transportation
HSIP	Highway Safety Improvement Program
IGR	Intergovernmental Review
OahuMPO	Oahu Metropolitan Planning Organization
OCCSR	City and County of Honolulu Office of Climate Change, Sustainability and Resiliency
ORTP	Oahu Regional Transportation Plan
STIP	Statewide Transportation Improvement Program
TAC	Technical Advisory Committee
TAM	Transit Asset Management
TIP	Transportation Improvement Program
T6	Title VI of the Civil Rights Act of 1964
U.S.C.	United States Code

Funding Categories

Federal Highway Administration (FHWA)

Bridge OS	Bridge Off-System
Earmark	Earmark
FHWA Grant	FHWA Competitive Grants
FLAP	Federal Lands Highway Discretionary
HIP-BFP	Highway Infrastructure Program - Bridge Formula Program
HIP-CPF/CDS	Highway Infrastructure Program - Community Project Funding / Congressionally Directed Spending
HSIP	Highway Safety Improvement Program
NHPP	National Highway Performance Program
RHCP	Railway-Highway Crossing Program
STBG	Surface Transportation Block Grant Program
STP Enhance	Surface Transportation Program Enhancement
TA	Transportation Alternatives Set-Aside

Federal Transit Administration (FTA)

§5307/5340	Urbanized Area Formula Grants / Growing States/High Density States Program
§5309	Capital Investment Grants
§5310	Enhanced Mobility of Seniors & Individuals with Disabilities
§5329	State Safety Oversight Program
§5337	State of Good Repair Program
§5339	Bus and Bus Facilities Program
FTA Grant	FTA Competitive Grants
Discretionary	Congressional Discretionary Spending

Local

Local Local Funds

Project Phases (In Chronological Order)

H RTP	Honolulu Rail Transit Project
PLN	Planning
PE1	Preliminary Engineering – Part 1: Environmental Clearances and Design Work
PE2	Preliminary Engineering – Part 2: Final Design
DES	Design
PREROW	Preliminary Right-of-Way Activities
ROW	Right-of-Way Acquisition
PE2/CON	Final Design-Build
DES/CON	Design-Build
ADVCON	Advance Construction
CON	Construction
EQP	Equipment acquisition
REL	Relocation expenses
OPR	Operation expenses
INSP	Inspection

INTRODUCTION

The Transportation Improvement Program (TIP) is a short-term program, which lists all surface transportation projects or phases of projects on the island of Oahu that:

- Are regionally significant projects
- Use Federal Highway Administration (FHWA) or Federal Transit Administration (FTA) funding for projects including transportation alternatives, transit improvements, Federal Lands Transportation Program (FLTP) and Federal Lands Access Program (FLAP), Highway Safety Improvement Program (HSIP), trails, pedestrian walkways, and bicycle facilities except the following:
 - Safety projects under the Highway Safety Program and the Motor Carrier Safety Assistance Program
 - Metropolitan planning projects under the Unified Planning Work Program
 - State planning and research projects under State Planning and Research and Planning Programs
 - Emergency relief projects (except those involving substantial functional, locational, or capacity changes)
 - National planning and research projects under Technical Assistance and Workforce Development
 - Project management oversight projects under Project Management Oversight
- Require action by the FHWA or FTA (e.g., adding a freeway interchange with non-Federal funds)

Each project or project phase in the TIP must be consistent with the Oahu Regional Transportation Plan (ORTP). Projects or phases of projects can only be included if full funding can reasonably be anticipated to be available within the time period for completion of the project. Fiscal constraint must be demonstrated and maintained by year and include sufficient financial information to demonstrate which projects are to be implemented using current and/or reasonably available revenues. The TIP is also required to include a financial plan that demonstrates how the TIP can be implemented, identifies funding sources that are reasonably expected to be made available and any additional financing needed to carry out the TIP.

The TIP covers a period of four years plus two additional years for informational purposes. The TIP is updated every three years to provide a one-year overlap between updates and revised at least twice every Federal fiscal year (FFY) or as needed which is compatible with the Statewide Transportation Improvement Program (STIP) development and revision process. The TIP expires when the FHWA/FTA approval of the STIP expires.

REVISION PROCESS

Between updates every three years, the TIP is revised twice a year following the Semi-Annual Revision Schedule or as needed (e.g., emergency projects in response to natural and other disasters, situations where federal funds are at risk or become available, etc.) using an Out-of-Cycle Revision Schedule with processing time subject to the type of change described below. Either method is compatible with the STIP revision process.

A minor change is called an Administrative Modification while a major change is considered an Amendment.

An Administrative Modification is a minor change in cost to a project or project phase, a minor change to funding sources, a minor change to the start or end date of a project or project phase, a minor change in design concept or design scope, minor corrections, or adding, modifying, or removing a project or project phase involving advance construction. This revision does not require public review and comment or a redemonstration of fiscal constraint. An Administrative Modification does not require recommendation by the CAC and TAC or Policy Board approval. However, the Policy Board will be provided a copy of the Administrative Modification.

An Amendment is a major change to a project or project phase including the addition or deletion of a project, a major change in cost to a project or project phase, a major change to the start or end date of a project or project phase, a major change in design concept or design scope (e.g., changing project termini or the number of through traffic lanes or changing the number of stations in the case of fixed guideway transit projects). Changes to a project that is included only for illustrative purposes does not require an Amendment. This revision requires a public review and comment period and a redemonstration of fiscal constraint. An Amendment requires recommendation by the CAC and TAC for Policy Board approval.

The OahuMPO will determine the type of revision using the Administrative Modification and Amendment Decision Table below. If the type of revision cannot be determined, the OahuMPO will consult with the partner agencies to make a determination. Misspellings, typos, and other data entry errors will be corrected by the OahuMPO in cooperation with the partner agencies and is not considered a revision.

Administrative Modification and Amendment Decision Table

Type of Change	A. Administrative Modification	B. Amendment
1. Adding or removing a project in the first four years of the TIP		X
2. A major change in cost to a project or project phase in the first four years of the TIP that exceeds both \$10 million and 25% of the estimated total project cost before the proposed increase, excluding the current inflation rate ¹		X
3. A major change to the start or end date of a project or project phase: 3.1. Moving a project to the illustrative years 3.2. Deferring a project phase to a year that is outside of the first four years of the TIP when there are no other project phases in the first four years		X
4. A major change in design concept or design scope: 4.1 Changing project termini 4.2 Changing the number of through traffic lanes 4.3 Changing the number of stations in the case of fixed guideway transit projects 4.4 Changing the purpose and need (e.g., shoreline protection to capacity) 4.5 Changing between replacement buses and expansion buses 4.6 Adding a project phase to an existing project with major changes in cost defined in B.2		X
5. A major change in funding sources: 5.1. Transferring (flexing) funds between Federal agencies that is greater than \$10 million		X

Type of Change	A. Administrative Modification	B. Amendment
<p>6. A minor change in design concept or design scope:</p> <p>6.1. Splitting or grouping projects as long as the design concept or design scope remains unchanged with minor changes in cost to a project or project phase defined in A.8</p> <p>6.2. Adding or deleting projects from grouped listings as long as the design concept or design scope remains unchanged with minor changes in cost to a project or project phase defined in A.8</p> <p>6.3. Changing the design scope to accommodate prescribed actions under NEPA.</p> <p>6.4. Adding a project phase to an existing project with minor changes in cost defined in A.8</p>	X	
7. Changes to a project or project phase that is included only for illustrative purposes	X	
8. A minor change in cost to a project or project phase in the first four years of the TIP that is below the thresholds defined in B.2	X	
<p>9. A minor change to funding sources:</p> <p>9.1. Transferring (flexing) funds between Federal agencies that is below the threshold defined in B.5.1</p> <p>9.2. Changing funding sources within the same Federal agency</p> <p>9.3. Changing funding sources between Federal, local, and state agencies</p> <p>9.4. Adding discretionary funds (e.g., congressional earmarks)</p>	X	

Type of Change	A. Administrative Modification	B. Amendment
10. A minor change to the start or end date of a project or project phase: 10.1. Advancing a project from the programmed year 10.2. Deferring a project to a later year within the first four years of the TIP 10.3. Deleting or deferring a project phase to a year outside of the first four years of the TIP as long as another phase of the project remains within the first four years and the design concept or design scope remains unchanged	X	
11. Adding, modifying, or removing a project or project phase involving advance construction	X	

1. Approved by the OahuMPO Policy Board on February 28, 2023, on the condition that the cost threshold for a major change to a project or project phase (see 2.B in the Administrative Modification and Amendment Decision Table) will automatically revert from \$10 million to \$5 million at the end of one year from the approval date unless approved by the Policy Board on a permanent basis.

Semi-Annual Revision Schedule - Administrative Modification

Activity	Fall Revision	Spring Revision
OSR meetings	October	March
Agencies submit revisions	November	April
Development of the draft TIP revision	November - December	April - May
TIP approval, STIP incorporation, and FHWA/FTA approval	January	June
Total processing time	4 months	4 months

Semi-Annual Revision Schedule - Amendment

Activity	Fall Revision	Spring Revision
OSR meetings	October	March
Agencies submit revisions	November	April
Development of the draft TIP revision	November - December	April - May
Public comment and intergovernmental review	December - January	May - June
Response to comments	January	June
Committees and Policy Board	February	July
TIP approval, STIP incorporation, and FHWA/FTA approval	March	August
Total processing time	6 months	6 months

Out-of-Cycle Revision Schedule

Activity	Administrative Modification	Amendment
Agencies submit revisions	1-3 days	1-3 days
Development of the draft TIP revision	At least 1 week	At least 2 weeks due to technical analysis (e.g., CMP, fiscal constraint, new project scoring, and T6/EJ analysis)
Public comment and intergovernmental review		2 weeks
Response to comments		1 week
Committees and Policy Board		At least 4 weeks due to the Committees and Policy Board schedule
TIP approval, STIP incorporation, and FHWA/FTA approval	At least 1 week	At least 1 week
Total processing time	At least 2 weeks	At least 10 weeks

REVISION HISTORY

The TIP FFYs 2022-2025 was approved by the Policy Board in July 2021 and has been revised 13 times through April 2023. A summary is provided in the table below.

Revision #	Revision Type	Date	# Of Projects Modified	# Of Projects Removed	# Of Projects Added	Total # Of Projects Revised
1	Pre-Approved Administrative Modification	January 2022	37	0	0	37
2	Expedited Administrative Modification	February 2022	6	0	0	6
3	Amendment	February 2022	6	1	6	13
4	Pre-Approved Administrative Modification	May 2022	19	0	0	19
5	Expedited Administrative Modification	June 2022	1	0	0	1
6	Amendment	June 2022	3	1	4	8
7	Expedited Administrative Modification	July 2022	1	0	0	1
8	Pre-Approved Administrative Modification	September 2022	1	0	0	1
9	Pre-Approved Administrative Modification	December 2022	34	0	0	34
10	Expedited Administrative Modification	March 2023	2	0	0	2
11	Amendment	March 2023	5	0	10	15
12	Administrative Modification	March 2023	1	0	0	1
13	Administrative Modification	April 2023	2	0	0	2
Total			118	2	20	140

REVISIONS

The following tables list the revisions grouped by the type of federal funding (e.g., FHWA) and project sponsor (e.g., HDOT).

FHWA Funded Projects: Hawaii Department of Transportation

Project #	Project Name	Revision Details
OS12	Destination Sign, Upgrade/Replacement	Request to adjust ADVCON funds in FFYs 2025-2027 for Phase 3B (A.10.1).
OS12	Destination Sign, Upgrade/Replacement	Request to advance CON funds to FFY 2024 from FFY 2025 to relocate utilities and avoid a utility agreement with the FHWA for Phase 3B (A.10.1).
OS12	Destination Sign, Upgrade/Replacement	Request to increase the estimated total project cost from \$42,346,000 to \$46,000,000 (A.8).
OS14	Interstate Route H-1, Guardrail and Shoulder Improvements, Kapiolani Interchange to Ainakoa Avenue	Request to adjust ADVCON in FFYs 2024-2027 since CON is being deferred (A.10.2).
OS14	Interstate Route H-1, Guardrail and Shoulder Improvements, Kapiolani Interchange to Ainakoa Avenue	Request to defer and inflate CON funds from FFY 2023 to FFY 2024 due to the added scope for the Waialae Ave off-ramp (A.10.2).
OS14	Interstate Route H-1, Guardrail and Shoulder Improvements, Kapiolani Interchange to Ainakoa Avenue	Request to increase the estimated total project cost from \$22,550,000 to \$23,300,000 (A.8).
OS29	Kamehameha Highway (Route 83), Bridge Replacement, Kaluanui Stream Bridge	Request to adjust ADVCON funds in FFYs 2024-2027 (A.10.2).
OS29	Kamehameha Highway (Route 83), Bridge Replacement, Kaluanui Stream Bridge	Request to defer and inflate CON funds from FFY 2023 to FFY 2024 due to issues with shoreline certification and other related permits (A.10.2).
OS34	Kamehameha Highway (Route 83), Bridge Replacement, Waiahole Stream Bridge	Request to adjust ADVCON funds in FFYs 2024-2026 since CON is being deferred (A.10.2).
OS34	Kamehameha Highway (Route 83), Bridge Replacement, Waiahole Stream Bridge	Request to defer and inflate ROW and CON funds from FFY 2023 to FFY 2024 since the project is restarting due to contract problems (A.10.2).
OS36	Kamehameha Highway (Route 83), Bridge Replacement, Waipilopilo Stream Bridge	Request to adjust ADVCON funds in FFYs 2024-2026 (A.10.2).
OS36	Kamehameha Highway (Route 83), Bridge Replacement, Waipilopilo Stream Bridge	Request to defer and inflate CON funds from FFY 2023 to FFY 2024 since the design needs to be redone (A.10.2).
OS72	Kamehameha Highway (Route 83), Bridge Replacement, Waimanana Bridge	Request to defer and inflate PE1, PE2, ROW, and CON funds by one year since the project has just been scoped (A.10.2).
OS75	Kamehameha Highway (Route 83), Rockfall Protection, Waimea Bay	Sunset Beach Phase - Request to add NHPP funds for PE1 in FFY 2023 (A.6.4).
OS76	Bridge Rehabilitation Program, Various Locations TBD by the BrM (Bridge Management System)	Request to increase PE1 funds in FFYs 2024-2027 and federalize to fund bridge rehabilitation projects that get prioritized from the BrM to help meet TAMP targets (A.9.3).
OS76	Bridge Rehabilitation Program, Various Locations TBD by the BrM (Bridge Management System)	Request to increase PE2 funds in FFYs 2025-2027 to fund bridge rehabilitation projects that get prioritized from the BrM to help meet TAMP targets (A.8).
OS76	Bridge Rehabilitation Program, Various Locations TBD by the BrM (Bridge Management System)	Request to increase ROW funds in FFYs 2025-2027 and federalize to fund bridge rehabilitation projects that get prioritized from the BrM to help meet TAMP targets (A.8 & A.9.3).
OS76	Bridge Rehabilitation Program, Various Locations TBD by the BrM (Bridge Management System)	Request to increase the estimated total project cost from \$38,500,000 to \$41,390,000 (A.8).

FHWA Funded Projects: Hawaii Department of Transportation

Project #	Project Name	Revision Details
OS77	Bridge Replacement Program, Various Locations TBD by the BrM (Bridge Management System)	Request to defederalize PE2 funds in FFYs 2024-2025 to redirect federal funds to newly added bridges as identified by the BrM (A.9.3).
OS78	Bridge Seismic Retrofit Program, Various Locations TBD by the Seismic Retrofit Management Program	Request to defederalize CON funds in FFY 2025 to redirect federal funds to newly added bridges as identified by the BrM (A.9.3).
OS78	Bridge Seismic Retrofit Program, Various Locations TBD by the Seismic Retrofit Management Program	Request to defederalize PE2 funds in FFYs 2024-2025 to redirect federal funds to newly added bridges as identified by the BrM (A.9.3).
OS-21-44	Pali Highway Rockfall Mitigation, Vicinity of MP 6.10 to MP 6.55	Request to defer and inflate each phase of the project. Project will start up in 2024 under new project management contract (A.10.2).
OS-21-44	Pali Highway Rockfall Mitigation, Vicinity of MP 6.10 to MP 6.55	Request to increase the estimated total project cost from \$13,000,000 to \$13,329,000 (A.8).
OS-21-45	Pali Highway, Rockfall Mitigation, Vicinity of MP 5.9 to MP 6.1	Request to defer and inflate each phase of the project. Project will start up in 2024 under new project management contract (A.10.2).
OS-22-61	Farrington Highway (Route 93) Bridge Rehabilitation, Ulehawa Stream Bridge	Request to add NHPP funds for PE1 in FFY 2024 (A.6.4).
OS-22-61	Farrington Highway (Route 93) Bridge Rehabilitation, Ulehawa Stream Bridge	Request to add NHPP funds for PE2 and ROW in FFY 2025 (A.6.4).
OS-22-61	Farrington Highway (Route 93) Bridge Rehabilitation, Ulehawa Stream Bridge	Request to adjust ADVCON funds in FFYs 2026-2027 (A.10.2).
OS-22-61	Farrington Highway (Route 93) Bridge Rehabilitation, Ulehawa Stream Bridge	Request to defer and inflate CON funds from FFY 2025 to FFY 2026 (A.10.2).
OS-22-61	Farrington Highway (Route 93) Bridge Rehabilitation, Ulehawa Stream Bridge	Request to increase the estimated total project cost from \$25,000,000 to \$25,720,000 (A.8).
OS-22-63	Kamehameha Highway Wetland Enhancement at James Campbell National Wildlife Refuge	Request to defer and increase CON funds from FFY 2023 to FFY 2024 pending CORP approval of scope (A.10.2).
OS80	Traffic Signal Modernization Program, Various Locations	Request to add STBG funds for PE1/PE2 in FFY 2023 (A.6.4).
OS80	Traffic Signal Modernization Program, Various Locations	Request to increase the estimated total project cost from \$6,250,000 to \$9,500,000 (A.8).

FHWA Funded Projects: City & County of Honolulu

Project #	Project Name	Revision Details
OC26	Transportation Alternative Program (State)	University of Hawaii West Oahu (UHWO) Rail Station Multimodal Access Improvements - Request to add this project to the grouped listing (A.6.2).
OC26	Transportation Alternative Program (State)	Haleiwa Road Multi-Use Path - Request to move this project to OC2 (A.6.2).
OC26	Transportation Alternative Program (State)	Oahu SRTS Coordinator - Request to add this project to the grouped listing (A.6.2).
OC26	Transportation Alternative Program (State)	Request to increase the estimated total project cost from \$19,416,000 to \$22,267,000 (A.8).
OC-22-63	Safe Streets and Roads for All (SS4A)	Request to add PE1 funds in FFY 2024 for a competitive grant application (A.8).
OC-22-63	Safe Streets and Roads for All (SS4A)	Request to add the Kailua project to the grouped listing (A.6.2).
OC-22-63	Safe Streets and Roads for All (SS4A)	Request to adjust PE2 funds in FFY 2024 for a competitive grant application (A.8).
OC-22-63	Safe Streets and Roads for All (SS4A)	Request to remove CON and INSP funds in FFY 2024 from an unsuccessful grant application (A.8).
OC-22-65	Bridge Program	Request to add the Rehabilitation of Auloa Road Bridge (Bridge No. 407) project to the grouped listing (A.6.2).
OC-22-65	Bridge Program	Request to add the Rehabilitation of Waipio Point Access Road Bridge No. 2 (Bridge No. 971) project to the grouped listing (A.6.2).
OC-22-65	Bridge Program	Request to increase the estimated total project cost from \$18,000,000 from \$20,000,000 (A.8).
OC2	Bikeway Improvements Program	Haleiwa Road Multi-Use Path - Request to add this project from OC26, change the funding source from TA to STBG and defer due to delays (A.6.2, A.9.2 and A.10.2).
OC2	Bikeway Improvements Program	Kailua-Lanikai Bike Path - Request to defer ROW and PE1 due to PUR delays (A.10.2).
OC2	Bikeway Improvements Program	Request to increase the estimated total project cost from \$18,018,000 to \$20,480,000 (A.8).
OC2	Bikeway Improvements Program	South Shore Bikeway (EW Transportation Corridor Planning) - Request to defer PE1 due to PUR delays (A.10.2).
OC8	Traffic Improvements at Various Locations	Mahoe and Waipahu Streets - Request to add local funds for non-par work (A.8).
OC8	Traffic Improvements at Various Locations	Request to increase the estimated total project cost from \$9,419,000 to \$9,969,000 (A.8).
OC10	Traffic Signals at Various Locations	Phase 16 - Request to defer due to PS&E and PUR delays (A.10.2).
OC10	Traffic Signals at Various Locations	Phase 18 - Request to defer due to PoP extension delays (A.10.2).
OC10	Traffic Signals at Various Locations	Phase 19 - Request to defer due to PUR delays (A.10.2).
OC10	Traffic Signals at Various Locations	Phase 20 - Request to defer due to PUR delays (A.10.2).
OC10	Traffic Signals at Various Locations	Request to decrease the estimated total project cost from \$25,635,000 to \$24,893,000 (A.8).

FTA Funded Projects: Hawaii Department of Transportation

Project #	Project Name	Revision Details
OS68	HDOT State Safety Oversight Program	Request to increase OPR funds in FFYs 2023-2027 (A.8).
OS68	HDOT State Safety Oversight Program	Request to increase the estimated total project cost from \$2,582,000 to \$4,286,000 (A.8).

FTA Funded Projects: City & County of Honolulu

Project #	Project Name	Revision Details
OC16	Honolulu Rail Transit Project	FY2023 - Request to add Sen. Schatz Appropriation (A.8).
OC-21-59	Intermodal Connectivity - TA Set-Aside (OahuMPO)	Request to revise and add funds in FFY 2024 (A.8).
OC-22-66	Intermodal Connectivity - TA Set-Aside (State)	Request to add a project to the grouped listing (A.6.2).
OC-22-67	Intermodal Connectivity Improvements	Request to change the funding from local to federal (A.9.3).
OC-22-68	Electrification of Transportation Infrastructure	Request to add four projects to the grouped listing (A.6.2).
OC-22-69	Multimodal Transit Fare Collection System	Request to add a project phase, revise funding, and defer per updated plan (A.8 and 10.2).
OC-22-69	Multimodal Transit Fare Collection System	Request to increase the estimated total project cost from \$8,275,000 to \$10,344,000 (A.8).
OC14	Bus Stop ADA Access and Site Improvements	Request to add 5307/5340 funds for PE1, PE2, CON and EQP (A.6.4).
OC14	Bus Stop ADA Access and Site Improvements	Request to increase the estimated total project cost from \$4,604,000 to \$9,867,000 (A.8).
OC14	Bus Stop ADA Access and Site Improvements	Request to revise CON and DES funds in FFYs 2023-2024 (A.8).
OC21	Transit Safety and Security Projects	Request to defer due to delays and adding funds (A.8 and A.10.2).
OC21	Transit Safety and Security Projects	Request to increase the estimated total project cost from \$6,905,000 to \$7,628,000 (A.8).
OC31	Middle Street Transit Center	Request to revise funds per the CIP budget (A.8).

PROJECTS

The following projects are grouped by the type of federal funding (e.g., FHWA) and project sponsor (e.g., HDOT).

FHWA Funded Projects: Hawaii Department of Transportation

OS12 Destination Sign, Upgrade/Replacement



Source: Esri, Maxar, GeoEye, Earthstar Geographics, CNES/Airbus DS, USDA, USGS, AeroGRID, IGN, and the GIS User Community

Project Description:

Replace and/or upgrade the existing destination signs and sign support structures on Interstate Routes H-1, H-2, H-201 and Pali Highway.

Mile Post/s: Not applicable

Complete Streets (CS):

Project will implement: No information available.

Existing Feature/s: No information available.

ORTP Project #: OS12

Neighborhood(s): Various Locations

Estimated Total Project Cost: \$46,000,000

Total Project Cost Notes:

(May include project costs outside of the 4-year TIP and 2 informational years.)

Project Sponsor: State of Hawaii (FHWA Funded)

Agency Responsible for Carrying Out Project/Phase:

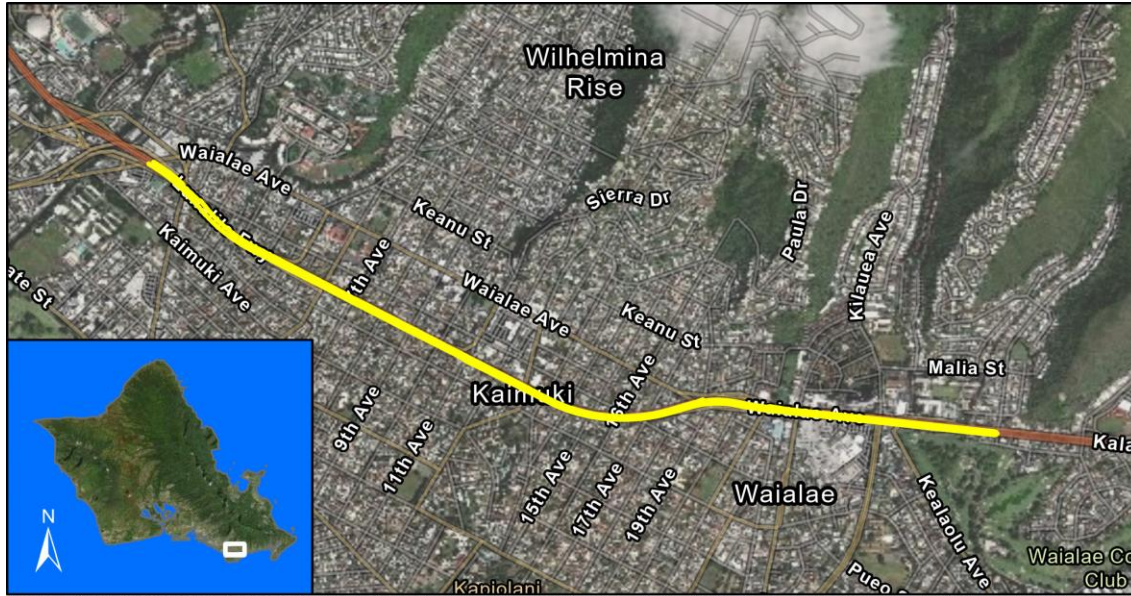
Hawaii Department of Transportation

													FOR INFORMATION ONLY						
	FFY 2022			FFY 2023			FFY 2024			FFY 2025			FFY 2026			FFY 2027			
	Total	Federal	Local	Total	Federal	Local	Total	Federal	Local	Total	Federal	Local	Total	Federal	Local	Total	Federal	Local	
Phase	(x\$1000)	(x\$1000)	(x\$1000)	(x\$1000)	(x\$1000)	(x\$1000)	(x\$1000)	(x\$1000)	(x\$1000)	(x\$1000)	(x\$1000)	(x\$1000)	(x\$1000)	(x\$1000)	(x\$1000)	(x\$1000)	(x\$1000)	(x\$1000)	Funding Category
INSP	3,000	2,400	600	0	0	0	0	0	0	0	0	0	0	0	0	0	0	0	NHPP
Phase 3A																			
CON	0	0	0	9,700	2,000	7,700	0	0	0	0	0	0	0	0	0	0	0	0	NHPP
ADVCON	0	0	0	0	0	0	0	2,000	-2,000	0	3,760	-3,760	0	0	0	0	0	0	NHPP
Phase 3B																			
CON	0	0	0	0	0	0	10,500	2,100	8,400	0	0	0	0	0	0	0	0	0	NHPP
ADVCON	0	0	0	0	0	0	0	0	0	0	3,000	-3,000	0	3,300	-3,300	0	0	0	NHPP
Phase 4																			
PE1	0	0	0	572	458	114	0	0	0	0	0	0	0	0	0	0	0	0	NHPP
PE2	0	0	0	0	0	0	832	666	166	0	0	0	0	0	0	0	0	0	NHPP
CON	0	0	0	0	0	0	0	0	0	10,404	4,323	6,081	0	0	0	0	0	0	NHPP
ADVCON	0	0	0	0	0	0	0	0	0	0	0	0	0	4,000	-4,000	0	0	0	NHPP
Phase 5																			
PE1	0	0	0	0	0	0	312	250	62	0	0	0	0	0	0	0	0	0	NHPP
PE2	0	0	0	0	0	0	0	0	0	469	375	94	0	0	0	0	0	0	NHPP
CON	0	0	0	0	0	0	0	0	0	0	0	0	0	0	0	8,160	6,324	1,836	NHPP

OS12 Destination Sign, Upgrade/Replacement

Phase	FFY 2022			FFY 2023			FFY 2024			FFY 2025			FOR INFORMATION ONLY						Funding Category	
	Total (x\$1000)	Federal (x\$1000)	Local (x\$1000)	Total (x\$1000)	Federal (x\$1000)	Local (x\$1000)	Total (x\$1000)	Federal (x\$1000)	Local (x\$1000)	Total (x\$1000)	Federal (x\$1000)	Local (x\$1000)	FFY 2026			FFY 2027				
													Total (x\$1000)	Federal (x\$1000)	Local (x\$1000)	Total (x\$1000)	Federal (x\$1000)	Local (x\$1000)		
Phase 5																				
ADVCON	0	0	0	0	0	0	0	0	0	0	0	0	0	0	0	0	0	0	0	NHPP
Phase 6																				
PE1	0	0	0	0	0	0	0	0	0	0	0	0	877	789	88	0	0	0	0	NHPP
PE2	0	0	0	0	0	0	0	0	0	0	0	0	0	0	0	1,020	918	102	0	NHPP
CON	0	0	0	0	0	0	0	0	0	0	0	0	0	0	0	0	0	0	0	NHPP
Total	3,000	2,400	600	10,272	2,458	7,814	11,644	5,016	6,628	10,873	11,458	-585	877	8,089	-7,212	9,180	7,242	1,938	0	

OS14 Interstate Route H-1, Guardrail and Shoulder Improvements, Kapiolani Interchange to Ainakoa Avenue



Source: Esri, Maxar, GeoEye, Earthstar Geographics, CNES/Airbus DS, USDA, USGS, AeroGRID, IGN, and the GIS User Community, Sources: Esri, HERE, Garmin, FAO, NOAA, USGS, © OpenStreetMap contributors, and the GIS User Community

Project Description:

Install and/or upgrade existing guardrails, crash cushions, and concrete barriers to meet current standards. Upgrade lighting and make bike improvements near the beginning of the H-1 on ramp in the vicinity of Ainakoa Avenue to fill a gap in the bike system.

Mile Post/s: MP 25.24 to MP 27.16

Complete Streets (CS):

Project will implement: No information available.

Existing Feature/s: No information available.

ORTP Project #: OS14

Neighborhood(s): Waialae-Kahala, Kaimuki, Diamond Head-Kapahulu-St. Louis Heights, McCully-Moiliili

Estimated Total Project Cost: \$23,300,000

Total Project Cost Notes:

(May include project costs outside of the 4-year TIP and 2 informational years.)

Project Sponsor: State of Hawaii (FHWA Funded)

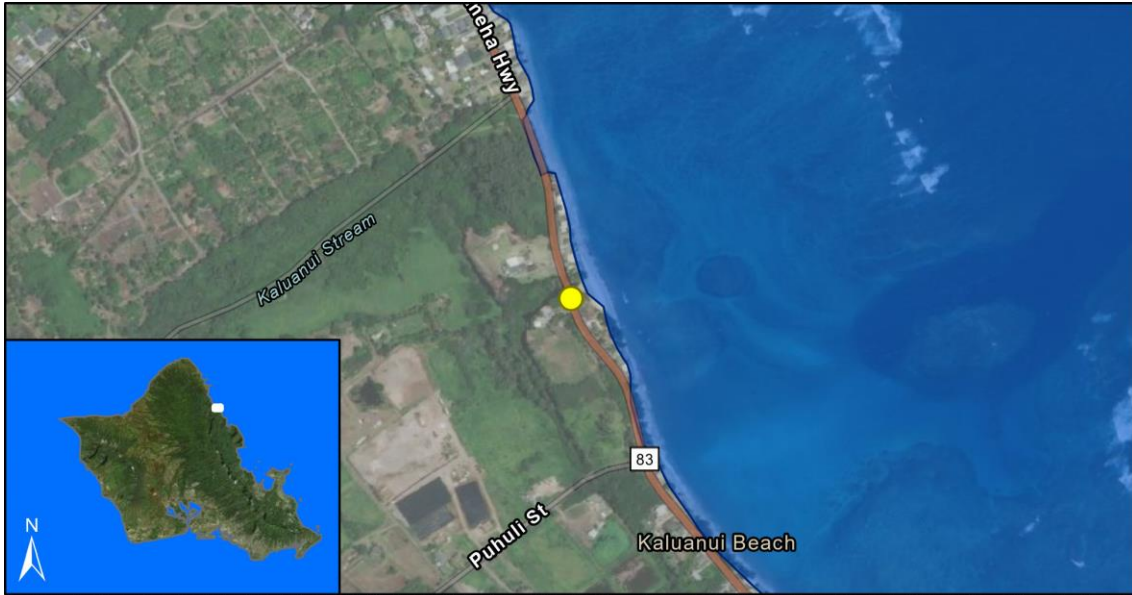
Agency Responsible for Carrying Out Project/Phase:

Hawaii Department of Transportation

FOR INFORMATION ONLY

Phase	FFY 2022			FFY 2023			FFY 2024			FFY 2025			FFY 2026			FFY 2027			Funding Category
	Total (x\$1000)	Federal (x\$1000)	Local (x\$1000)	Total (x\$1000)	Federal (x\$1000)	Local (x\$1000)	Total (x\$1000)	Federal (x\$1000)	Local (x\$1000)	Total (x\$1000)	Federal (x\$1000)	Local (x\$1000)	Total (x\$1000)	Federal (x\$1000)	Local (x\$1000)	Total (x\$1000)	Federal (x\$1000)	Local (x\$1000)	
Phase 1																			
ADVCON	0	1,050	-1,050	0	0	0	0	0	0	0	0	0	0	0	0	0	0	0	NHPP
Phase 2																			
CON	0	0	0	0	0	0	15,750	1,600	14,150	0	0	0	0	0	0	0	0	0	NHPP
ADVCON	0	0	0	0	0	0	0	0	0	0	4,000	-4,000	0	4,000	-4,000	0	3,000	-3,000	NHPP
Total	0	1,050	-1,050	0	0	0	15,750	1,600	14,150	0	4,000	-4,000	0	4,000	-4,000	0	3,000	-3,000	

OS29 Kamehameha Highway (Route 83), Bridge Replacement, Kaluanui Stream Bridge



Source: Esri, Maxar, GeoEye, Earthstar Geographics, CNES/Airbus DS, USDA, USGS, AeroGRID, IGN, and the GIS User Community, Sources: Esri, HERE, Garmin, FAO, NOAA, USGS, © OpenStreetMap contributors, and the GIS User Community

Project Description:

Replace the existing bridge.

Mile Post/s: Kamehameha Highway: MP 22.50 to 22.70

Complete Streets (CS):

Project will implement: No information available.

Existing Feature/s: No information available.

ORTP Project #: OS29

Neighborhood(s): Koolauloa

Estimated Total Project Cost: \$20,000,000

Total Project Cost Notes:

(May include project costs outside of the 4-year TIP and 2 informational years.)

Project Sponsor: State of Hawaii (FHWA Funded)

Agency Responsible for Carrying Out Project/Phase:

Hawaii Department of Transportation

FOR INFORMATION ONLY

Phase	FFY 2022			FFY 2023			FFY 2024			FFY 2025			FFY 2026			FFY 2027			Funding Category
	Total (x\$1000)	Federal (x\$1000)	Local (x\$1000)	Total (x\$1000)	Federal (x\$1000)	Local (x\$1000)	Total (x\$1000)	Federal (x\$1000)	Local (x\$1000)	Total (x\$1000)	Federal (x\$1000)	Local (x\$1000)	Total (x\$1000)	Federal (x\$1000)	Local (x\$1000)	Total (x\$1000)	Federal (x\$1000)	Local (x\$1000)	
CON	0	0	0	0	0	0	19,278	2,422	16,856	0	0	0	0	0	0	0	0	0	NHPP
ADVCON	0	0	0	0	0	0	0	0	0	0	7,000	-7,000	0	3,000	-3,000	0	3,000	-3,000	NHPP
Total	0	0	0	0	0	0	19,278	2,422	16,856	0	7,000	-7,000	0	3,000	-3,000	0	3,000	-3,000	

OS34 Kamehameha Highway (Route 83), Bridge Replacement, Waiahole Stream Bridge



Source: Esri, Maxar, GeoEye, Earthstar Geographics, CNES/Airbus DS, USDA, USGS, AeroGRID, IGN, and the GIS User Community, Sources: Esri, HERE, Garmin, FAO, NOAA, USGS, © OpenStreetMap contributors, and the GIS User Community

Project Description:

Replace the existing bridge.

Mile Post/s:

Kamehameha Highway: MP 34.31 to MP 34.51

Complete Streets (CS):

Project will implement: Bicycle and pedestrian facilities will be included when feasible.

Existing Feature/s: No information available.

ORTP Project #: OS34

Neighborhood(s): Kahaluu

Estimated Total Project Cost: \$17,465,000

Total Project Cost Notes:

(May include project costs outside of the 4-year TIP and 2 informational years.)

Project Sponsor: State of Hawaii (FHWA Funded)

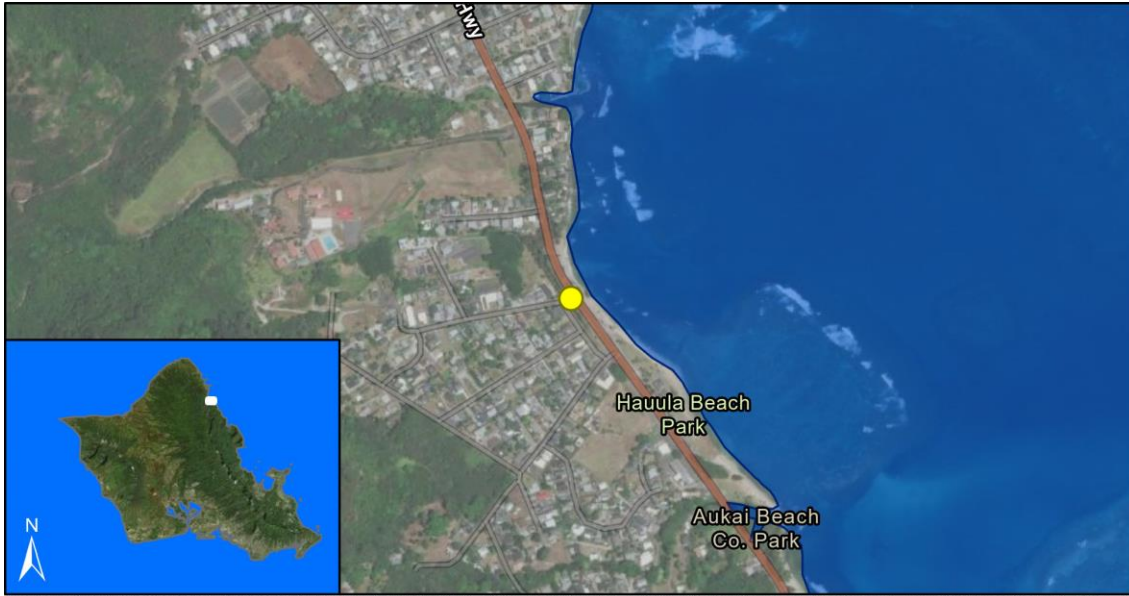
Agency Responsible for Carrying Out Project/Phase:

Hawaii Department of Transportation

FOR INFORMATION ONLY

Phase	FFY 2022			FFY 2023			FFY 2024			FFY 2025			FFY 2026			FFY 2027			Funding Category
	Total (x\$1000)	Federal (x\$1000)	Local (x\$1000)	Total (x\$1000)	Federal (x\$1000)	Local (x\$1000)	Total (x\$1000)	Federal (x\$1000)	Local (x\$1000)	Total (x\$1000)	Federal (x\$1000)	Local (x\$1000)	Total (x\$1000)	Federal (x\$1000)	Local (x\$1000)	Total (x\$1000)	Federal (x\$1000)	Local (x\$1000)	
ROW	0	0	0	0	0	0	643	514	129	0	0	0	0	0	0	0	0	0	NHPP
CON	0	0	0	0	0	0	16,601	3,281	13,320	0	0	0	0	0	0	0	0	0	NHPP
ADVCON	0	0	0	0	0	0	0	0	0	0	5,000	-5,000	0	5,000	-5,000	0	0	0	NHPP
Total	0	0	0	0	0	0	17,244	3,795	13,449	0	5,000	-5,000	0	5,000	-5,000	0	0	0	

OS36 Kamehameha Highway (Route 83), Bridge Replacement, Waipilopilo Stream Bridge



Source: Esri, Maxar, GeoEye, Earthstar Geographics, CNES/Airbus DS, USDA, USGS, AeroGRID, IGN, and the GIS User Community, Sources: Esri, HERE, Garmin, FAO, NOAA, USGS, © OpenStreetMap contributors, and the GIS User Community

Project Description:

Replace the existing concrete T-bridge on Kamehameha Highway in the vicinity of Hauula.

Mile Post/s: Kamehameha Highway: MP 21.12

Complete Streets (CS):

Project will implement: No information available.

Existing Feature/s: No information available.

ORTP Project #: OS36

Neighborhood(s): Koolauloa

Estimated Total Project Cost: \$12,300,000

Total Project Cost Notes:

(May include project costs outside of the 4-year TIP and 2 informational years.)

Project Sponsor: State of Hawaii (FHWA Funded)

Agency Responsible for Carrying Out Project/Phase:

Hawaii Department of Transportation

FOR INFORMATION ONLY

Phase	FFY 2022			FFY 2023			FFY 2024			FFY 2025			FFY 2026			FFY 2027			Funding Category
	Total (x\$1000)	Federal (x\$1000)	Local (x\$1000)	Total (x\$1000)	Federal (x\$1000)	Local (x\$1000)	Total (x\$1000)	Federal (x\$1000)	Local (x\$1000)	Total (x\$1000)	Federal (x\$1000)	Local (x\$1000)	Total (x\$1000)	Federal (x\$1000)	Local (x\$1000)	Total (x\$1000)	Federal (x\$1000)	Local (x\$1000)	
ROW	0	0	0	1,000	800	200	0	0	0	0	0	0	0	0	0	0	0	0	NHPP
CON	0	0	0	0	0	0	10,500	400	10,100	0	0	0	0	0	0	0	0	0	NHPP
ADVCON	0	0	0	0	0	0	0	0	0	0	6,000	-6,000	0	2,000	-2,000	0	0	0	NHPP
Total	0	0	0	1,000	800	200	10,500	400	10,100	0	6,000	-6,000	0	2,000	-2,000	0	0	0	

OS72 Kamehameha Highway (Route 83), Bridge Replacement, Waimanana Bridge



Resource Mapping Hawaii, Maxar, Earthstar Geographics, Esri, HERE, Garmin, FAO, NOAA, USGS, EPA, Esri, HERE, Garmin, SafeGraph, GeoTechnologies, Inc, METI/NASA, USGS, EPA, US Census Bureau, USDA

Project Description:

Replace the existing bridge.

Mile Post/s: MP 22.21 to MP 22.22

Complete Streets (CS):

Project will implement: No information available.

Existing Feature/s: No information available.

ORTP Project #: OS72

Neighborhood(s): Koolauloa

Estimated Total Project Cost: \$11,520,000

Total Project Cost Notes:

(May include project costs outside of the 4-year TIP and 2 informational years.)

Project Sponsor: State of Hawaii (FHWA Funded)

Agency Responsible for Carrying Out Project/Phase:

Hawaii Department of Transportation

FOR INFORMATION ONLY

Phase	FFY 2022			FFY 2023			FFY 2024			FFY 2025			FFY 2026			FFY 2027			Funding Category
	Total (x\$1000)	Federal (x\$1000)	Local (x\$1000)	Total (x\$1000)	Federal (x\$1000)	Local (x\$1000)	Total (x\$1000)	Federal (x\$1000)	Local (x\$1000)	Total (x\$1000)	Federal (x\$1000)	Local (x\$1000)	Total (x\$1000)	Federal (x\$1000)	Local (x\$1000)	Total (x\$1000)	Federal (x\$1000)	Local (x\$1000)	
PE1	0	0	0	0	0	0	733	586	147	0	0	0	0	0	0	0	0	0	NHPP
PE2	0	0	0	0	0	0	0	0	0	1,048	838	210	0	0	0	0	0	0	NHPP
ROW	0	0	0	0	0	0	0	0	0	0	0	0	833	666	167	0	0	0	NHPP
CON	0	0	0	0	0	0	0	0	0	0	0	0	0	0	0	0	0	0	NHPP
Total	0	0	0	0	0	0	733	586	147	1,048	838	210	833	666	167	0	0	0	

OS75 Kamehameha Highway (Route 83), Rockfall Protection, Waimea Bay



Resource Mapping Hawaii, Maxar, Esri, HERE, Garmin, SafeGraph, METI/NASA, USGS, EPA, US Census Bureau, USDA, Earthstar Geographics, Esri, HERE, Garmin, FAO, NOAA, USGS, EPA

Project Description:

Initiate rockfall mitigation measures along Kamehameha Highway at Waimea Bay (milepost 5.4 to milepost 6.2).

Mile Post/s: MP 5.4 to MP 6.2

Complete Streets (CS):

Project will implement: No information available.

Existing Feature/s: No information available.

ORTP Project #: OS75

Neighborhood(s): North Shore

Estimated Total Project Cost: \$35,450,000

Total Project Cost Notes:

(May include project costs outside of the 4-year TIP and 2 informational years.)

Project Sponsor: State of Hawaii (FHWA Funded)

Agency Responsible for Carrying Out Project/Phase:

Hawaii Department of Transportation

FOR INFORMATION ONLY

Phase	FFY 2022			FFY 2023			FFY 2024			FFY 2025			FFY 2026			FFY 2027			Funding Category
	Total (x\$1000)	Federal (x\$1000)	Local (x\$1000)	Total (x\$1000)	Federal (x\$1000)	Local (x\$1000)	Total (x\$1000)	Federal (x\$1000)	Local (x\$1000)	Total (x\$1000)	Federal (x\$1000)	Local (x\$1000)	Total (x\$1000)	Federal (x\$1000)	Local (x\$1000)	Total (x\$1000)	Federal (x\$1000)	Local (x\$1000)	
Haleiwa																			
PE2	0	0	0	0	0	0	857	686	171	0	0	0	0	0	0	0	0	0	NHPP
CON	0	0	0	0	0	0	0	0	0	21,000	6,400	14,600	0	0	0	0	0	0	NHPP
ADVCON	0	0	0	0	0	0	0	0	0	0	0	0	0	5,000	-5,000	0	5,400	-5,400	NHPP
Sunset Beach																			
PE1	0	0	0	750	600	150	0	0	0	0	0	0	0	0	0	0	0	0	NHPP
CON	0	0	0	0	0	0	0	0	0	0	0	0	0	0	0	9,261	3,476	5,785	NHPP
Waimea Bay																			
ROW	0	0	0	0	0	0	536	429	107	0	0	0	0	0	0	0	0	0	NHPP
Total	0	0	0	750	600	150	1,393	1,115	278	21,000	6,400	14,600	0	5,000	-5,000	9,261	8,876	385	

OS76 Bridge Rehabilitation Program, Various Locations TBD by the BrM (Bridge Management System)



Source: Esri, Maxar, GeoEye, Earthstar Geographics, CNES/Airbus DS, USDA, USGS, AeroGRID, IGN, and the GIS User Community

Project Description:

Rehabilitate bridges.

Mile Post/s: Not applicable

Complete Streets (CS):

Project will implement: No information available.

Existing Feature/s: No information available.

ORTP Project #: OS76

Neighborhood(s): Various Locations

Estimated Total Project Cost: \$41,390,000

Total Project Cost Notes:

(May include project costs outside of the 4-year TIP and 2 informational years.)

Project Sponsor: State of Hawaii (FHWA Funded)

Agency Responsible for Carrying Out Project/Phase:

Hawaii Department of Transportation

Phase	FOR INFORMATION ONLY																		Funding Category	
	FFY 2022			FFY 2023			FFY 2024			FFY 2025			FFY 2026			FFY 2027				
	Total	Federal	Local	Total	Federal	Local	Total	Federal	Local	Total	Federal	Local	Total	Federal	Local	Total	Federal	Local		
	(x\$1000)	(x\$1000)	(x\$1000)	(x\$1000)	(x\$1000)	(x\$1000)	(x\$1000)	(x\$1000)	(x\$1000)	(x\$1000)	(x\$1000)	(x\$1000)	(x\$1000)	(x\$1000)	(x\$1000)	(x\$1000)	(x\$1000)	(x\$1000)		
Various Locations TBD by BrM																				
PE1	0	0	0	500	0	500	1,200	960	240	1,200	960	240	1,200	960	240	1,200	960	240	NHPP	
PE2	0	0	0	0	0	0	1,000	800	200	1,200	960	240	1,200	960	240	1,200	960	240	NHPP	
ROW	0	0	0	0	0	0	500	0	500	330	264	66	330	264	66	330	264	66	NHPP	
CON	0	0	0	0	0	0	0	0	0	0	0	0	15,000	12,000	3,000	15,000	12,000	3,000	NHPP	
Total	0	0	0	500	0	500	2,700	1,760	940	2,730	2,184	546	17,730	14,184	3,546	17,730	14,184	3,546		

OS77 Bridge Replacement Program, Various Locations TBD by the BrM (Bridge Management System)



Source: Esri, Maxar, GeoEye, Earthstar Geographics, CNES/Airbus DS, USDA, USGS, AeroGRID, IGN, and the GIS User Community

Project Description:

Replace bridges.

Mile Post/s:

Not applicable

Complete Streets (CS):

Project will implement: No information available.

Existing Feature/s: No information available.

ORTP Project #: OS77

Neighborhood(s): Various Locations

Estimated Total Project Cost: \$26,400,000

Total Project Cost Notes:

(May include project costs outside of the 4-year TIP and 2 informational years.)

Project Sponsor: State of Hawaii (FHWA Funded)

Agency Responsible for Carrying Out Project/Phase:

Hawaii Department of Transportation

Phase	FOR INFORMATION ONLY																		Funding Category
	FFY 2022			FFY 2023			FFY 2024			FFY 2025			FFY 2026			FFY 2027			
	Total	Federal	Local	Total	Federal	Local	Total	Federal	Local	Total	Federal	Local	Total	Federal	Local	Total	Federal	Local	
	(x\$1000)	(x\$1000)	(x\$1000)	(x\$1000)	(x\$1000)	(x\$1000)	(x\$1000)	(x\$1000)	(x\$1000)	(x\$1000)	(x\$1000)	(x\$1000)	(x\$1000)	(x\$1000)	(x\$1000)	(x\$1000)	(x\$1000)	(x\$1000)	
Various Locations TBD by BrM																			
PE1	0	0	0	400	0	400	400	0	400	400	0	400	400	0	400	400	0	400	NHPP
PE2	0	0	0	0	0	0	600	0	600	600	0	600	600	480	120	600	480	120	NHPP
ROW	0	0	0	0	0	0	500	0	500	500	0	500	500	0	500	500	0	500	NHPP
CON	0	0	0	0	0	0	0	0	0	0	0	0	10,000	8,000	2,000	10,000	8,000	2,000	NHPP
Total	0	0	0	400	0	400	1,500	0	1,500	1,500	0	1,500	11,500	8,480	3,020	11,500	8,480	3,020	



Project Description:
Seismic Retrofit of bridges.

Mile Post/s: Not applicable

Complete Streets (CS):
Project will implement: No information available.
Existing Feature/s: No information available.

ORTP Project #: OS78

Neighborhood(s): Various Locations

Estimated Total Project Cost: \$19,400,000

Total Project Cost Notes:
(May include project costs outside of the 4-year TIP and 2 informational years.)

Project Sponsor: State of Hawaii (FHWA Funded)

Agency Responsible for Carrying Out Project/Phase:
Hawaii Department of Transportation

Phase	FFY 2022			FFY 2023			FFY 2024			FFY 2025			FOR INFORMATION ONLY						Funding Category
	Total	Federal	Local	Total	Federal	Local	Total	Federal	Local	Total	Federal	Local	FFY 2026			FFY 2027			
	(x\$1000)	(x\$1000)	(x\$1000)	(x\$1000)	(x\$1000)	(x\$1000)	(x\$1000)	(x\$1000)	(x\$1000)	(x\$1000)	(x\$1000)	(x\$1000)	Total	Federal	Local	Total	Federal	Local	
Various Locations TBD by Seismic Retrofit Management Program																			
PE1	0	0	0	400	0	400	400	0	400	400	0	400	400	0	400	400	0	400	NHPP
PE2	0	0	0	0	0	0	600	0	600	600	0	600	600	480	120	600	480	120	NHPP
CON	0	0	0	0	0	0	0	0	0	5,000	0	5,000	5,000	4,000	1,000	5,000	4,000	1,000	NHPP
Total	0	0	0	400	0	400	1,000	0	1,000	6,000	0	6,000	6,000	4,480	1,520	6,000	4,480	1,520	

**Project Description:**

Upgrade signal equipment to improve programming and optimization, to help improve traffic flow, reduce congestion, and prevent failures & downtime. Upgrades include replace old/damaged signal poles, underground conduits & wiring, signal controllers, and other equipment.

Mile Post/s:**Complete Streets (CS):**

Project will implement: No information available.

Existing Feature/s: No information available.

ORTP Project #: OS80

Neighborhood(s): Various Locations

Estimated Total Project Cost: \$6,250,000

Total Project Cost Notes:

(May include project costs outside of the 4-year TIP and 2 informational years.)

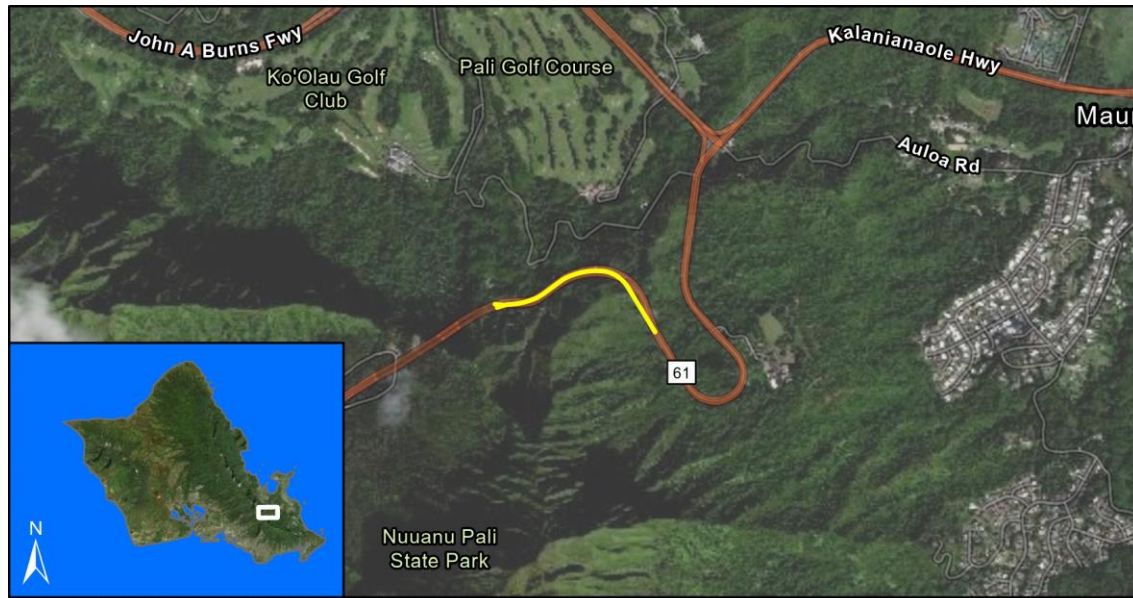
Project Sponsor: State of Hawaii (FHWA Funded)

Agency Responsible for Carrying Out Project/Phase:

Hawaii Department of Transportation

													FOR INFORMATION ONLY						Funding Category
FFY 2022			FFY 2023			FFY 2024			FFY 2025			FFY 2026			FFY 2027				
	Total	Federal	Local	Total	Federal	Local	Total	Federal	Local	Total	Federal	Local	Total	Federal	Local	Total	Federal	Local	
Phase	(x\$1000)	(x\$1000)	(x\$1000)	(x\$1000)	(x\$1000)	(x\$1000)	(x\$1000)	(x\$1000)	(x\$1000)	(x\$1000)	(x\$1000)	(x\$1000)	(x\$1000)	(x\$1000)	(x\$1000)	(x\$1000)	(x\$1000)	(x\$1000)	
PE1/PE2	0	0	0	4,500	3,600	900	0	0	0	0	0	0	0	0	0	0	0	0	STBG
CON	0	0	0	0	0	0	5,000	2,000	3,000	0	0	0	0	0	0	0	0	0	STBG
ADVCON	0	0	0	0	0	0	0	0	0	0	2,000	-2,000	0	0	0	0	0	0	STBG
Total	0	0	0	4,500	3,600	900	5,000	2,000	3,000	0	2,000	-2,000	0	0	0	0	0	0	

OS-21-44 Pali Highway Rockfall Mitigation, Vicinity of MP 6.10 to MP 6.55



Source: Esri, Maxar, GeoEye, Earthstar Geographics, CNES/Airbus DS, USDA, USGS, AeroGRID, IGN, and the GIS User Community, Sources: Esri, HERE, Garmin, FAO, NOAA, USGS, © OpenStreetMap contributors, and the GIS User Community

Project Description:

Mitigate past rockfall events and prevent future damage to the roadway infrastructure.

Mile Post/s: MP 6.10 to 6.55

Complete Streets (CS):

Project will implement: Not applicable.

Existing Feature/s: Not applicable.

ORTP Project #: O-21-44

Neighborhood(s): Kaneohe, Kailua

Estimated Total Project Cost: \$13,329,000

Total Project Cost Notes:

(May include project costs outside of the 4-year TIP and 2 informational years.)

Project Sponsor: State of Hawaii (FHWA Funded)

Agency Responsible for Carrying Out Project/Phase:

Hawaii Department of Transportation

FOR INFORMATION ONLY

Phase	FFY 2022			FFY 2023			FFY 2024			FFY 2025			FFY 2026			FFY 2027			Funding Category
	Total (x\$1000)	Federal (x\$1000)	Local (x\$1000)	Total (x\$1000)	Federal (x\$1000)	Local (x\$1000)	Total (x\$1000)	Federal (x\$1000)	Local (x\$1000)	Total (x\$1000)	Federal (x\$1000)	Local (x\$1000)	Total (x\$1000)	Federal (x\$1000)	Local (x\$1000)	Total (x\$1000)	Federal (x\$1000)	Local (x\$1000)	
PE1	0	0	0	0	0	0	1,070	856	214	0	0	0	0	0	0	0	0	0	NHPP
PE2	0	0	0	0	0	0	0	0	0	683	546	137	0	0	0	0	0	0	NHPP
ROW	0	0	0	0	0	0	0	0	0	26	20	6	0	0	0	0	0	0	NHPP
CON	0	0	0	0	0	0	0	0	0	0	0	0	0	0	0	11,550	5,240	6,310	NHPP
ADVCON	0	0	0	0	0	0	0	0	0	0	0	0	0	0	0	0	0	0	NHPP
Total	0	0	0	0	0	0	1,070	856	214	709	566	143	0	0	0	11,550	5,240	6,310	

OS-21-45 Pali Highway, Rockfall Mitigation, Vicinity of MP 5.9 to MP 6.1



Source: Esri, Maxar, GeoEye, Earthstar Geographics, CNES/Airbus DS, USDA, USGS, AeroGRID, IGN, and the GIS User Community, Sources: Esri, HERE, Garmin, FAO, NOAA, USGS, © OpenStreetMap contributors, and the GIS User Community

Project Description:

Mitigate past rockfall events and prevent future damage to the roadway infrastructure.

Mile Post/s: MP 5.9 to 6.1

Complete Streets (CS):

Project will implement: Not applicable.

Existing Feature/s: Not applicable.

ORTP Project #: O-21-45

Neighborhood(s): Kaneohe, Kailua

Estimated Total Project Cost: \$5,000,000

Total Project Cost Notes:

(May include project costs outside of the 4-year TIP and 2 informational years.)

Project Sponsor: State of Hawaii (FHWA Funded)

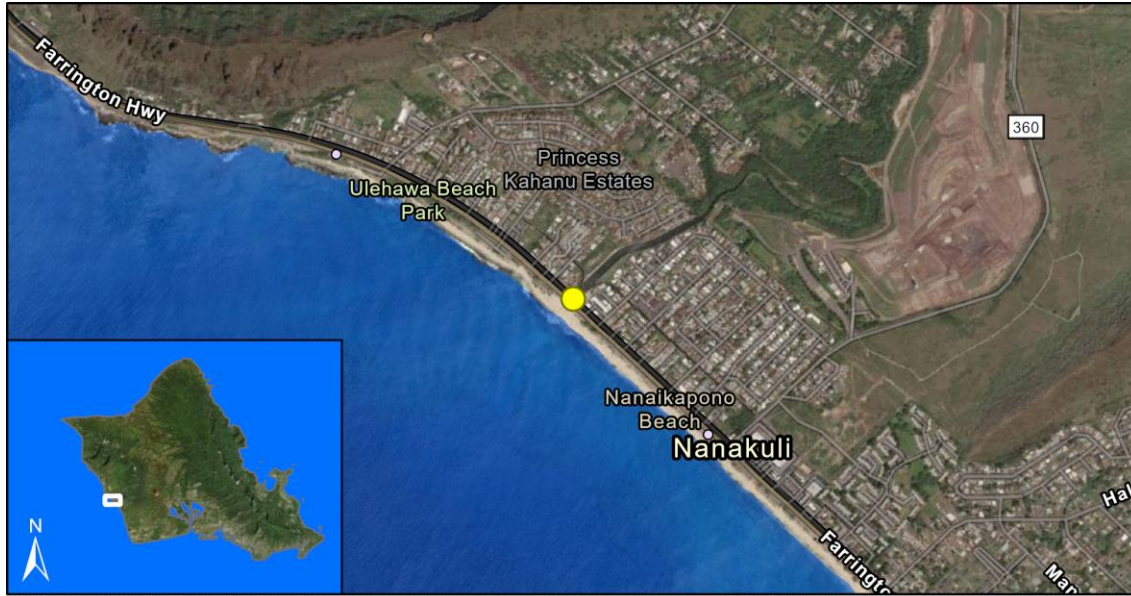
Agency Responsible for Carrying Out Project/Phase:

Hawaii Department of Transportation

FOR INFORMATION ONLY

Phase	FFY 2022			FFY 2023			FFY 2024			FFY 2025			FFY 2026			FFY 2027			Funding Category
	Total (x\$1000)	Federal (x\$1000)	Local (x\$1000)	Total (x\$1000)	Federal (x\$1000)	Local (x\$1000)	Total (x\$1000)	Federal (x\$1000)	Local (x\$1000)	Total (x\$1000)	Federal (x\$1000)	Local (x\$1000)	Total (x\$1000)	Federal (x\$1000)	Local (x\$1000)	Total (x\$1000)	Federal (x\$1000)	Local (x\$1000)	
PE1	0	0	0	0	0	0	390	312	78	0	0	0	0	0	0	0	0	0	NHPP
PE2	0	0	0	0	0	0	0	0	0	252	202	50	0	0	0	0	0	0	NHPP
ROW	0	0	0	0	0	0	0	0	0	26	20	6	0	0	0	0	0	0	NHPP
CON	0	0	0	0	0	0	0	0	0	0	0	0	0	0	0	4,200	3,360	840	NHPP
Total	0	0	0	0	0	0	390	312	78	278	222	56	0	0	0	4,200	3,360	840	

OS-22-61 Farrington Highway (Route 93) Bridge Rehabilitation, Ulehawa Stream Bridge



Source: Esri, Maxar, GeoEye, Earthstar Geographics, CNES/Airbus DS, USDA, USGS, AeroGRID, IGN, and the GIS User Community, Sources: Esri, HERE, Garmin, FAO, NOAA, USGS, © OpenStreetMap contributors, and the GIS User Community

Project Description:

Rehabilitate the existing bridge

Mile Post/s:

Complete Streets (CS):

Project will implement: Not applicable.

Existing Feature/s: Not applicable.

ORTP Project #: N/A. Consistent with the OTRP. To be added in the next ORTP revision.

Neighborhood(s): Nanakuli-Maili

Estimated Total Project Cost: \$25,720,000

Total Project Cost Notes:

(May include project costs outside of the 4-year TIP and 2 informational years.)

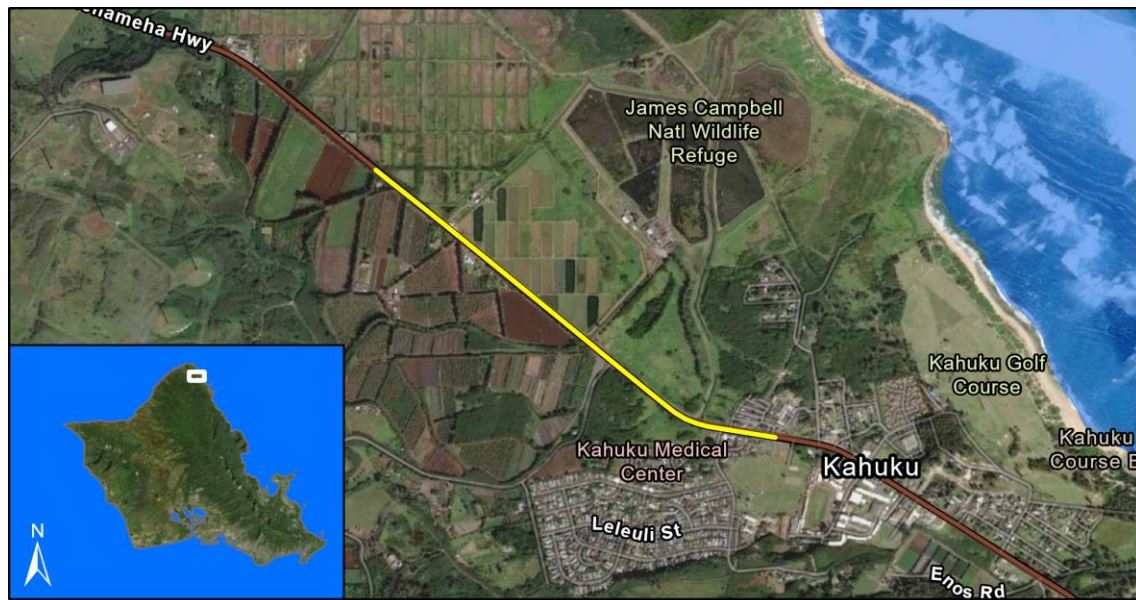
Project Sponsor: State of Hawaii (FHWA Funded)

Agency Responsible for Carrying Out Project/Phase:

Hawaii Department of Transportation

													FOR INFORMATION ONLY						Funding Category
FFY 2022			FFY 2023			FFY 2024			FFY 2025			FFY 2026			FFY 2027				
	Total	Federal	Local	Total	Federal	Local	Total	Federal	Local	Total	Federal	Local	Total	Federal	Local	Total	Federal	Local	
Phase	(x\$1000)	(x\$1000)	(x\$1000)	(x\$1000)	(x\$1000)	(x\$1000)	(x\$1000)	(x\$1000)	(x\$1000)	(x\$1000)	(x\$1000)	(x\$1000)	(x\$1000)	(x\$1000)	(x\$1000)	(x\$1000)	(x\$1000)	(x\$1000)	
Phase 1																			
PE1	0	0	0	0	0	0	1,500	1,200	300	0	0	0	0	0	0	0	0	0	NHPP
PE2	0	0	0	0	0	0	0	0	0	1,000	800	200	0	0	0	0	0	0	NHPP
ROW	0	0	0	0	0	0	0	0	0	120	96	24	0	0	0	0	0	0	NHPP
CON	0	0	0	0	0	0	0	0	0	0	0	0	23,100	8,480	14,620	0	0	0	NHPP
ADVCON	0	0	0	0	0	0	0	0	0	0	0	0	0	0	0	0	10,000	-10,000	NHPP
Total	0	0	0	0	0	0	1,500	1,200	300	1,120	896	224	23,100	8,480	14,620	0	10,000	-10,000	

OS-22-63 Kamehameha Highway Wetland Enhancement at James Campbell National Wildlife Refuge



Source: Esri, Maxar, GeoEye, Earthstar Geographics, CNES/Airbus DS, USDA, USGS, AeroGRID, IGN, and the GIS User Community, Sources: Esri, HERE, Garmin, FAO, NOAA, USGS, © OpenStreetMap contributors, and the GIS User Community

Project Description:

Mitigation of wetland loss due to Haleiwa Bypass Road and the Kahekili Highway Widening projects.

Mile Post/s:

Complete Streets (CS):

Project will implement: Not applicable.

Existing Feature/s: Not applicable.

ORTP Project #: N/A. Consistent with the ORTP. To be added in the next ORTP revision.

Neighborhood(s): Koolauloa

Estimated Total Project Cost: \$2,500,000

Total Project Cost Notes:

(May include project costs outside of the 4-year TIP and 2 informational years.)

Project Sponsor: State of Hawaii (FHWA Funded)

Agency Responsible for Carrying Out Project/Phase:

Hawaii Department of Transportation

													FOR INFORMATION ONLY						Funding Category
FFY 2022			FFY 2023			FFY 2024			FFY 2025			FFY 2026			FFY 2027				
	Total	Federal	Local	Total	Federal	Local	Total	Federal	Local	Total	Federal	Local	Total	Federal	Local	Total	Federal	Local	
Phase	(x\$1000)	(x\$1000)	(x\$1000)	(x\$1000)	(x\$1000)	(x\$1000)	(x\$1000)	(x\$1000)	(x\$1000)	(x\$1000)	(x\$1000)	(x\$1000)	(x\$1000)	(x\$1000)	(x\$1000)	(x\$1000)	(x\$1000)	(x\$1000)	
CON	0	0	0	0	0	0	2,500	2,000	500	0	0	0	0	0	0	0	0	0	STBG
Total	0	0	0	0	0	0	2,500	2,000	500	0	0	0	0	0	0	0	0	0	

FHWA Funded Projects: City and County of Honolulu



Source: Esri, Maxar, GeoEye, Earthstar Geographics, CNES/Airbus DS, USDA, USGS, AeroGRID, IGN, and the GIS User Community

Project Description:

An on-going islandwide program for the implementation of the Oahu Bicycle Master Plan improvements, the development of new projects, and the upgrade of existing bicycle projects.

Mile Post/s:

Complete Streets (CS):

Project will implement: Bikeway improvements; new bikeway projects; and bikeway upgrades.

Existing Feature/s: See Oahu Bicycle Master Plan.

ORTP Project #: OC2

Neighborhood(s): Island wide

Estimated Total Project Cost: \$20,480,000

Total Project Cost Notes:

(May include project costs outside of the 4-year TIP and 2 informational years.)

Project Sponsor: City and County of Honolulu

Agency Responsible for Carrying Out Project/Phase:

City Department of Transportation Services

FOR INFORMATION ONLY

Phase	FFY 2022			FFY 2023			FFY 2024			FFY 2025			FFY 2026			FFY 2027			Funding Category	
	Total (x\$1000)	Federal (x\$1000)	Local (x\$1000)	Total (x\$1000)	Federal (x\$1000)	Local (x\$1000)	Total (x\$1000)	Federal (x\$1000)	Local (x\$1000)	Total (x\$1000)	Federal (x\$1000)	Local (x\$1000)	Total (x\$1000)	Federal (x\$1000)	Local (x\$1000)	Total (x\$1000)	Federal (x\$1000)	Local (x\$1000)		
Haleiwa Road Multi-Use Path																				
CON	0	0	0	0	0	0	0	0	0	219	175	44	1,339	1,071	268	0	0	0	STBG	
INSP	0	0	0	0	0	0	0	0	0	0	0	0	428	342	86	0	0	0	STBG	
Kailua-Lanikai Bike Path																				
PE1	0	0	0	0	0	0	536	429	107	0	0	0	0	0	0	0	0	0	STBG	
PE2	0	0	0	0	0	0	0	0	0	204	163	41	0	0	0	0	0	0	STBG	
ROW	0	0	0	0	0	0	1	0	1	0	0	0	0	0	0	0	0	0	STBG	
CON	0	0	0	0	0	0	0	0	0	0	0	0	1,020	816	204	0	0	0	STBG	
INSP	0	0	0	0	0	0	0	0	0	0	0	0	255	204	51	0	0	0	STBG	
Keolu Drive Complete Streets																				
PE1	0	0	0	1,000	800	200	0	0	0	0	0	0	0	0	0	0	0	0	STBG	
PE2	0	0	0	0	0	0	0	0	0	500	400	100	0	0	0	0	0	0	STBG	
CON	0	0	0	0	0	0	0	0	0	0	0	0	5,700	4,560	1,140	0	0	0	STBG	
INSP	0	0	0	0	0	0	0	0	0	0	0	0	1,425	1,140	285	0	0	0	STBG	
South Shore Bikeway (EW Transportation Corridor Planning)																				
PE1	0	0	0	0	0	0	3,000	2,400	600	3,000	2,400	600	0	0	0	0	0	0	HIP-CPF/CDS	

OC2 Bikeway Improvements Program

													FOR INFORMATION ONLY						
	FFY 2022			FFY 2023			FFY 2024			FFY 2025			FFY 2026			FFY 2027			
	Total	Federal	Local	Total	Federal	Local	Total	Federal	Local	Total	Federal	Local	Total	Federal	Local	Total	Federal	Local	Funding Category
Phase	(x\$1000)	(x\$1000)	(x\$1000)	(x\$1000)	(x\$1000)	(x\$1000)	(x\$1000)	(x\$1000)	(x\$1000)	(x\$1000)	(x\$1000)	(x\$1000)	(x\$1000)	(x\$1000)	(x\$1000)	(x\$1000)	(x\$1000)	(x\$1000)	
South Shore Bikeway (EW Transportation Corridor Planning)																			
PE1	0	0	0	0	0	0	150	120	30	300	240	60	0	0	0	0	0	0	STBG
Waipahu Depot Shared Use Path																			
PE2	0	0	0	0	0	0	103	82	21	0	0	0	0	0	0	0	0	0	STBG
CON	0	0	0	0	0	0	0	0	0	0	0	0	1,040	832	208	0	0	0	STBG
INSP	0	0	0	0	0	0	0	0	0	0	0	0	260	208	52	0	0	0	STBG
Total	0	0	0	1,000	800	200	3,790	3,031	759	4,223	3,378	845	11,467	9,173	2,294	0	0	0	



Source: Esri, Maxar, GeoEye, Earthstar Geographics, CNES/Airbus DS, USDA, USGS, AeroGRID, IGN, and the GIS User Community

Project Description:

Provide traffic congestion relief and improve traffic safety at various locations, including but not limited to Mahoe/Waipahu Streets and Manager's Drive/Hiapo Street intersection.

Mile Post/s: Not applicable.

Complete Streets (CS):

Project will implement: Project will incorporate complete streets features for pedestrian use.

Existing Feature/s: No information available.

ORTP Project #: OC8

Neighborhood(s): Various Locations

Estimated Total Project Cost: \$9,969,000

Total Project Cost Notes:

(May include project costs outside of the 4-year TIP and 2 informational years.)

Project Sponsor: City and County of Honolulu

Agency Responsible for Carrying Out Project/Phase:

City Department of Transportation Services

FOR INFORMATION ONLY

Phase	FFY 2022			FFY 2023			FFY 2024			FFY 2025			FFY 2026			FFY 2027			Funding Category	
	Total (x\$1000)	Federal (x\$1000)	Local (x\$1000)	Total (x\$1000)	Federal (x\$1000)	Local (x\$1000)	Total (x\$1000)	Federal (x\$1000)	Local (x\$1000)	Total (x\$1000)	Federal (x\$1000)	Local (x\$1000)	Total (x\$1000)	Federal (x\$1000)	Local (x\$1000)	Total (x\$1000)	Federal (x\$1000)	Local (x\$1000)		
Mahoe and Waipahu Streets																				
CON	0	0	0	5,350	4,000	1,350	0	0	0	0	0	0	0	0	0	0	0	0	0	STBG
INSP	0	0	0	1,000	800	200	0	0	0	0	0	0	0	0	0	0	0	0	0	STBG
Manager's Drive/Hiapo Street Intersection Improvements																				
PE1	300	240	60	0	0	0	0	0	0	0	0	0	0	0	0	0	0	0	0	STBG
PE2	0	0	0	0	0	0	156	125	31	0	0	0	0	0	0	0	0	0	0	STBG
CON	0	0	0	0	0	0	0	0	0	2,413	1,930	483	0	0	0	0	0	0	0	STBG
INSP	0	0	0	0	0	0	0	0	0	750	600	150	0	0	0	0	0	0	0	STBG
Total	300	240	60	6,350	4,800	1,550	156	125	31	3,163	2,530	633	0	0	0	0	0	0	0	

OC10 Traffic Signals at Various Locations



Source: Esri, Maxar, GeoEye, Earthstar Geographics, CNES/Airbus DS, USDA, USGS, AeroGRID, IGN, and the GIS User Community

Project Description:

Install and upgrade traffic signals island wide including ADA improvements, signs and markings, and interties.

Mile Post/s: Not applicable

Complete Streets (CS):

Project will implement: Not applicable.

Existing Feature/s: Not applicable.

ORTP Project #: OC10

Neighborhood(s): Various Locations

Estimated Total Project Cost: \$24,893,000

Total Project Cost Notes:

(May include project costs outside of the 4-year TIP and 2 informational years.)

Project Sponsor: City and County of Honolulu

Agency Responsible for Carrying Out Project/Phase:

City Department of Transportation Services

FOR INFORMATION ONLY

Phase	FFY 2022			FFY 2023			FFY 2024			FFY 2025			FFY 2026			FFY 2027			Funding Category	
	Total (x\$1000)	Federal (x\$1000)	Local (x\$1000)	Total (x\$1000)	Federal (x\$1000)	Local (x\$1000)	Total (x\$1000)	Federal (x\$1000)	Local (x\$1000)	Total (x\$1000)	Federal (x\$1000)	Local (x\$1000)	Total (x\$1000)	Federal (x\$1000)	Local (x\$1000)	Total (x\$1000)	Federal (x\$1000)	Local (x\$1000)		
Phase 16 - Kapiolani Blvd/Kaimuki Ave, Salt Lake Blvd/Radford Dr, Nehoa St/Mott-Smith Dr, Ala Ilima St/Ala Liliko'i St, and Ulune St/Service Rd																				
CON	0	0	0	0	0	0	2,506	2,506	0	0	0	0	0	0	0	0	0	0	0	STBG
INSP	0	0	0	0	0	0	425	425	0	0	0	0	0	0	0	0	0	0	0	STBG
Phase 17 - Kuulei Rd/Aulike St, Kamehameha Hwy/Haiku Rd, King St/Church Ln, Ahua St/Kilihau St, Kuala St/Acacia Rd, King St/Pensacola St, Kamehameha Hwy/Pahia Rd, King St/Ward Ave, Atkinson Dr/Mahukona																				
CON	3,910	3,114	796	0	0	0	0	0	0	0	0	0	0	0	0	0	0	0	0	STBG
INSP	4	0	4	0	0	0	0	0	0	0	0	0	0	0	0	0	0	0	0	STBG
Phase 18 - Renton Rd/Pahika St, Kapiolani at Pumehana St (Rapid Flashing Beacons), School St/Houghtailing St, Kapiolani Blvd/Atkinson Dr, Kapiolani Blvd/Kalakaua Ave, Moanalua Rd/Hoomalu St																				
PE2	626	501	125	0	0	0	0	0	0	0	0	0	0	0	0	0	0	0	0	STBG
CON	0	0	0	0	0	0	0	0	0	2,277	1,821	456	0	0	0	0	0	0	0	STBG
EQP	0	0	0	0	0	0	0	0	0	1	0	1	0	0	0	0	0	0	0	STBG
INSP	0	0	0	0	0	0	0	0	0	565	452	113	0	0	0	0	0	0	0	STBG
Phase 19 - Waialae Avenue at 16th Avenue, Moanalua Road at Ualo Street																				
PE1	0	0	0	0	0	0	328	263	65	0	0	0	0	0	0	0	0	0	0	STBG
PE2	0	0	0	0	0	0	0	0	0	197	158	39	0	0	0	0	0	0	0	STBG
CON	0	0	0	0	0	0	0	0	0	0	0	0	2,625	2,100	525	0	0	0	0	STBG
EQP	0	0	0	0	0	0	0	0	0	0	0	0	1	0	1	0	0	0	0	STBG
INSP	0	0	0	0	0	0	0	0	0	0	0	0	525	420	105	0	0	0	0	STBG

OC10 Traffic Signals at Various Locations

													FOR INFORMATION ONLY						
	FFY 2022			FFY 2023			FFY 2024			FFY 2025			FFY 2026			FFY 2027			
	Total	Federal	Local	Total	Federal	Local	Total	Federal	Local	Total	Federal	Local	Total	Federal	Local	Total	Federal	Local	
Phase	(x\$1000)	(x\$1000)	(x\$1000)	(x\$1000)	(x\$1000)	(x\$1000)	(x\$1000)	(x\$1000)	(x\$1000)	(x\$1000)	(x\$1000)	(x\$1000)	(x\$1000)	(x\$1000)	(x\$1000)	(x\$1000)	(x\$1000)	(x\$1000)	Funding Category
Phase 20 -King St/Punahou St, Makuahine/Hala Dr, Hawaii Kai/Kalalea, Kamehameha Hwy/Waikalua Rd, Ward Ave/Lunalilo, Kapahulu Interconnect																			
PE1	0	0	0	0	0	0	459	368	91	0	0	0	0	0	0	0	0	0	STBG
PE2	0	0	0	0	0	0	0	0	0	328	263	65	0	0	0	0	0	0	STBG
CON	0	0	0	0	0	0	0	0	0	0	0	0	0	0	0	3,938	3,150	788	STBG
EQP	0	0	0	0	0	0	0	0	0	0	0	0	0	0	0	1	0	1	STBG
INSP	0	0	0	0	0	0	0	0	0	0	0	0	0	0	0	827	662	165	STBG
Phase 21 - Mehaula Pkwy/Ainamakua Dr (audio Ped), Kapiolani/Ward, Kapiolani/McCully																			
PE1	0	0	0	500	400	100	0	0	0	0	0	0	0	0	0	0	0	0	STBG
PE2	0	0	0	0	0	0	312	250	62	0	0	0	0	0	0	0	0	0	STBG
CON	0	0	0	0	0	0	0	0	0	0	0	0	0	0	0	3,750	3,000	750	STBG
EQP	0	0	0	0	0	0	0	0	0	0	0	0	0	0	0	1	0	1	STBG
INSP	0	0	0	0	0	0	0	0	0	0	0	0	0	0	0	787	630	157	STBG
Total	4,540	3,615	925	500	400	100	4,030	3,812	218	3,368	2,694	674	3,151	2,520	631	9,304	7,442	1,862	



Source: Esri, Maxar, GeoEye, Earthstar Geographics, CNES/Airbus DS, USDA, USGS, AeroGRID, IGN, and the GIS User Community

Project Description:

The Transportation Alternatives (TA) Set-Aside is a competitive grant program that provides funding for programs and projects defined as transportation alternatives, including on- and off-road pedestrian and bicycle facilities, infrastructure projects for improving non-driver access to public transportation and enhanced mobility, and community improvement activities. Locations to be determined by the State TA Set-Aside Project Evaluation and Ranking process. Projects may be flexed from FHWA to FTA.

Mile Post/s:

Complete Streets (CS):

Project will implement: Project will incorporate complete streets features for pedestrian and bicycle use.

Existing Feature/s: No information available.

ORTP Project #: OC26

Neighborhood(s): North Shore, Island wide

Estimated Total Project Cost: \$22,267,000

Total Project Cost Notes:

(May include project costs outside of the 4-year TIP and 2 informational years.)

Project Sponsor: City and County of Honolulu

Agency Responsible for Carrying Out Project/Phase:

City Department of Transportation Services

													FOR INFORMATION ONLY						
	FFY 2022			FFY 2023			FFY 2024			FFY 2025			FFY 2026			FFY 2027			
	Total	Federal	Local	Total	Federal	Local	Total	Federal	Local	Total	Federal	Local	Total	Federal	Local	Total	Federal	Local	Funding Category
Phase	(x\$1000)	(x\$1000)	(x\$1000)	(x\$1000)	(x\$1000)	(x\$1000)	(x\$1000)	(x\$1000)	(x\$1000)	(x\$1000)	(x\$1000)	(x\$1000)	(x\$1000)	(x\$1000)	(x\$1000)	(x\$1000)	(x\$1000)	(x\$1000)	
Oahu SRTS Coordinator																			
PLN	0	0	0	110	88	22	0	0	0	0	0	0	0	0	0	0	0	0	TA
Rail Station Multimodal Access Improvements - Halawa (Aloha Stadium) Station and Waiawa (Pearl Highlands) Station																			
CON	0	0	0	8,100	6,480	1,620	0	0	0	0	0	0	0	0	0	0	0	0	FHWA Grant
CON	0	0	0	7,250	5,800	1,450	0	0	0	0	0	0	0	0	0	0	0	0	TA
INSP	0	0	0	1,125	900	225	0	0	0	0	0	0	0	0	0	0	0	0	FHWA Grant
INSP	0	0	0	900	720	180	0	0	0	0	0	0	0	0	0	0	0	0	FHWA Grant
University of Hawaii West Oahu (UHWO) Rail Station Multimodal Access Improvements																			
CON	0	0	0	0	0	0	3,000	2,400	600	0	0	0	0	0	0	0	0	0	TA
Total	0	0	0	17,485	13,988	3,497	3,000	2,400	600	0	0	0	0	0	0	0	0	0	

OC-22-63 Safe Streets and Roads for All (SS4A)



Source: Esri, Maxar, GeoEye, Earthstar Geographics, CNES/Airbus DS, USDA, USGS, AeroGRID, IGN, and the GIS User Community

Project Description:

Program management, design, to install and upgrade sidewalks on City streets consistent with the Pedestrian Plan.

Mile Post/s:

Complete Streets (CS):

Project will implement: Project will incorporate complete streets features for both pedestrian use and bicycle use.

Existing Feature/s: No information available.

ORTP Project #: O-21-22

Neighborhood(s): Island wide

Estimated Total Project Cost: \$101,000,000

Total Project Cost Notes:

(May include project costs outside of the 4-year TIP and 2 informational years.)

Project Sponsor: City and County of Honolulu

Agency Responsible for Carrying Out Project/Phase:

City Department of Transportation Services

													FOR INFORMATION ONLY						
	FFY 2022			FFY 2023			FFY 2024			FFY 2025			FFY 2026			FFY 2027			
	Total	Federal	Local	Total	Federal	Local	Total	Federal	Local	Total	Federal	Local	Total	Federal	Local	Total	Federal	Local	
Phase	(x\$1000)	(x\$1000)	(x\$1000)	(x\$1000)	(x\$1000)	(x\$1000)	(x\$1000)	(x\$1000)	(x\$1000)	(x\$1000)	(x\$1000)	(x\$1000)	(x\$1000)	(x\$1000)	(x\$1000)	(x\$1000)	(x\$1000)	(x\$1000)	Funding Category
Kailua																			
PE1	0	0	0	0	0	0	2,039	1,631	408	1,647	1,318	329	0	0	0	0	0	0	STBG
PE2	0	0	0	0	0	0	0	0	0	0	0	0	1,536	1,229	307	0	0	0	STBG
CON	0	0	0	0	0	0	0	0	0	0	0	0	0	0	0	30,710	24,568	6,142	STBG
INSP	0	0	0	0	0	0	0	0	0	0	0	0	0	0	0	7,678	6,142	1,536	STBG
Phase 1																			
PE1	0	0	0	0	0	0	5,800	4,640	1,160	0	0	0	0	0	0	0	0	0	FHWA Grant
PE1	0	0	0	735	588	147	5,000	4,000	1,000	500	400	100	500	400	100	500	400	100	STBG
PE2	0	0	0	0	0	0	500	400	100	500	400	100	500	400	100	500	400	100	STBG
CON	0	0	0	0	0	0	0	0	0	2,000	1,600	400	4,000	3,200	800	4,000	3,200	800	STBG
INSP	0	0	0	0	0	0	0	0	0	500	400	100	1,000	800	200	1,000	800	200	STBG
Total	0	0	0	735	588	147	13,339	10,671	2,668	5,147	4,118	1,029	7,536	6,029	1,507	44,388	35,510	8,878	

OC-22-65 Bridge Program



Resource Mapping Hawaii, Maxar, Esri, HERE, Garmin, SafeGraph, METI/NASA, USGS, EPA, US Census Bureau, USDA, Earthstar Geographics, Esri, HERE, Garmin, FAO, NOAA, USGS, EPA

Project Description:

Rehabilitation or replacement of existing deteriorated concrete bridges.

Mile Post/s:

Complete Streets (CS):

Project will implement: No information available.

Existing Feature/s: No information available.

ORTP Project #: O-21-11

Neighborhood(s): North Shore

Estimated Total Project Cost: \$20,000,000

Total Project Cost Notes:

(May include project costs outside of the 4-year TIP and 2 informational years.)

Project Sponsor: City and County of Honolulu

Agency Responsible for Carrying Out Project/Phase:

City Department of Design and Construction

													FOR INFORMATION ONLY						
	FFY 2022			FFY 2023			FFY 2024			FFY 2025			FFY 2026			FFY 2027			
	Total	Federal	Local	Total	Federal	Local	Total	Federal	Local	Total	Federal	Local	Total	Federal	Local	Total	Federal	Local	Funding Category
Phase	(x\$1000)	(x\$1000)	(x\$1000)	(x\$1000)	(x\$1000)	(x\$1000)	(x\$1000)	(x\$1000)	(x\$1000)	(x\$1000)	(x\$1000)	(x\$1000)	(x\$1000)	(x\$1000)	(x\$1000)	(x\$1000)	(x\$1000)	(x\$1000)	
Rehabilitation of Aulua Road Bridge (Bridge No. 407)																			
CON	0	0	0	0	0	0	0	0	0	500	400	100	0	0	0	0	0	0	HIP-BFP
Rehabilitation of Waipio Point Access Road Bridge No. 2 (Bridge No. 971)																			
CON	0	0	0	0	0	0	0	0	0	1,500	1,200	300	0	0	0	0	0	0	HIP-BFP
Waialua Beach Road Bridge No. 605 Reconstruction																			
PE1	0	0	0	1,200	0	1,200	0	0	0	0	0	0	0	0	0	0	0	0	Local
PE2	0	0	0	0	0	0	0	0	0	800	0	800	0	0	0	0	0	0	Local
CON	0	0	0	0	0	0	0	0	0	0	0	0	0	0	0	16,000	12,800	3,200	HIP-BFP
Total	0	0	0	1,200	0	1,200	0	0	0	2,800	1,600	1,200	0	0	0	16,000	12,800	3,200	

FTA: Hawaii Department of Transportation



Esri, HERE, Garmin, SafeGraph, METI/NASA, USGS, EPA, USDA, Earthstar Geographics, Esri, HERE, Garmin, FAO, NOAA, USGS, EPA

Project Description:

This funding will provide operational resources for the HDOT State Safety Oversight Program administered by the HDOT Rail Transit Safety Office and will Implement 49 CFR Part 674 State Safety Oversight Final Rule.

Mile Post/s: Not applicable

Complete Streets (CS):

Project will implement: Not applicable.

Existing Feature/s: No information available.

ORTP Project #: OS68

Neighborhood(s): Island wide

Estimated Total Project Cost: \$4,286,000

Total Project Cost Notes:

(May include project costs outside of the 4-year TIP and 2 informational years.)

Project Sponsor: State of Hawaii (FTA Funded)

Agency Responsible for Carrying Out Project/Phase:

Hawaii Department of Transportation

Phase													FOR INFORMATION ONLY						Funding Category
	FFY 2022			FFY 2023			FFY 2024			FFY 2025			FFY 2026			FFY 2027			
	Total	Federal	Local	Total	Federal	Local	Total	Federal	Local	Total	Federal	Local	Total	Federal	Local	Total	Federal	Local	
	(x\$1000)	(x\$1000)	(x\$1000)	(x\$1000)	(x\$1000)	(x\$1000)	(x\$1000)	(x\$1000)	(x\$1000)	(x\$1000)	(x\$1000)	(x\$1000)	(x\$1000)	(x\$1000)	(x\$1000)	(x\$1000)	(x\$1000)	(x\$1000)	
OPR	672	537	135	1,144	915	229	595	475	120	625	500	125	625	500	125	625	500	125	\$5329
Total	672	537	135	1,144	915	229	595	475	120	625	500	125	625	500	125	625	500	125	

FTA: City and County of Honolulu



Source: Esri, Maxar, GeoEye, Earthstar Geographics, CNES/Airbus DS, USDA, USGS, AeroGRID, IGN, and the GIS User Community

Project Description:

To modify bus stops and bring them into compliance with the Americans with Disabilities Act (ADA), improve the mobility independence for transit users of all ages and abilities, pedestrian access, and the number of ADA accessible bus stops.

Mile Post/s: Not applicable

Complete Streets (CS):

Project will implement: ADA compliant site improvements on bus stop shelter, pavement, and landing provide pedestrians and bicycles with access to transit.

Existing Feature/s: No information available.

ORTP Project #: OC14

Neighborhood(s): Various Locations

Estimated Total Project Cost: \$9,867,000

Total Project Cost Notes:

(May include project costs outside of the 4-year TIP and 2 informational years.)

Project Sponsor: City and County of Honolulu

Agency Responsible for Carrying Out Project/Phase:

City Department of Transportation Services

													FOR INFORMATION ONLY						Funding Category
FFY 2022			FFY 2023			FFY 2024			FFY 2025			FFY 2026			FFY 2027				
	Total	Federal	Local	Total	Federal	Local	Total	Federal	Local	Total	Federal	Local	Total	Federal	Local	Total	Federal	Local	
Phase	(x\$1000)	(x\$1000)	(x\$1000)	(x\$1000)	(x\$1000)	(x\$1000)	(x\$1000)	(x\$1000)	(x\$1000)	(x\$1000)	(x\$1000)	(x\$1000)	(x\$1000)	(x\$1000)	(x\$1000)	(x\$1000)	(x\$1000)	(x\$1000)	
PE1	0	0	0	0	0	0	1	0	1	0	0	0	2	0	2	0	0	0	\$5307/\$5340
PE2	0	0	0	0	0	0	450	360	90	0	0	0	1,500	1,200	300	0	0	0	\$5307/\$5340
DES	365	292	73	479	406	73	166	133	33	365	292	73	365	292	73	365	292	73	\$5307/\$5340
CON	251	201	50	240	32	208	472	378	94	251	201	50	251	201	50	251	201	50	\$5307/\$5340
CON	0	0	0	0	0	0	0	0	0	1,600	1,280	320	0	0	0	700	560	140	\$5307/\$5340
CON	119	119	0	0	0	0	1,124	1,124	0	0	0	0	0	0	0	0	0	0	\$5310
EQP	0	0	0	0	0	0	0	0	0	400	0	400	0	0	0	150	0	150	\$5307/\$5340
Total	735	612	123	719	438	281	2,213	1,995	218	2,616	1,773	843	2,118	1,693	425	1,466	1,053	413	



Esri, HERE, Garmin, SafeGraph, METI/NASA, USGS, EPA, USDA, Earthstar Geographics, Esri, HERE, Garmin, FAO, NOAA, USGS, EPA

Project Description:

Plan, design, and construct a fixed guideway system between East Kapolei and Civic Center. The system includes stations and related appurtenances, park-and-ride facilities, a maintenance and storage facility, light metro vehicles, and associated core systems.

Mile Post/s: Not applicable

Complete Streets (CS):

Project will implement: Not applicable.

Existing Feature/s: Not applicable.

ORTP Project #: OC16

Neighborhood(s): Ala Moana-Kakaako, Downtown, Kalihi-Palama, Airport, Pearl City, Waipahu, Ewa, Makakilo-Kapolei-Honokai Hale

Estimated Total Project Cost: \$9,148,050,000

Total Project Cost Notes:

(May include project costs outside of the 4-year TIP and 2 informational years.)

Project Sponsor: City and County of Honolulu

Agency Responsible for Carrying Out Project/Phase:

Honolulu Authority for Rapid Transportation

Phase	FFY 2022			FFY 2023			FFY 2024			FFY 2025			FOR INFORMATION ONLY						Funding Category	
	Total	Federal	Local	Total	Federal	Local	Total	Federal	Local	Total	Federal	Local	FFY 2026			FFY 2027				
	(x\$1000)	(x\$1000)	(x\$1000)	(x\$1000)	(x\$1000)	(x\$1000)	(x\$1000)	(x\$1000)	(x\$1000)	(x\$1000)	(x\$1000)	(x\$1000)	Total	Federal	Local	Total	Federal	Local		
\$5307 Flex Funds																				
H RTP	0	0	0	66,000	55,000	11,000	30,000	25,000	5,000	30,000	25,000	5,000	12,000	10,000	2,000	12,000	10,000	2,000	\$5307/\$5340	
\$5309 American Rescue Plan Act																				
H RTP	70,000	70,000	0	0	0	0	0	0	0	0	0	0	0	0	0	0	0	0	\$5309	
\$5309 New Starts																				
H RTP	0	0	0	165,000	125,000	40,000	330,000	250,000	80,000	165,000	125,000	40,000	165,000	125,000	40,000	157,080	119,000	38,080	\$5309	
Sen. Schatz Appropriation																				
H RTP	0	0	0	63,800	63,800	0	0	0	0	0	0	0	0	0	0	0	0	0	Discretionary	
TAP State - Chinatown Bike Facility																				
PE2/CON	0	0	0	0	0	0	250	200	50	0	0	0	0	0	0	0	0	0	\$5307/\$5340	
TAP State - Middle Loch Connector																				
CON	0	0	0	500	400	100	0	0	0	0	0	0	0	0	0	0	0	0	\$5307/\$5340	
TAP State - Secure Bicycle Storage																				
CON	0	0	0	0	0	0	500	400	100	0	0	0	0	0	0	0	0	0	\$5307/\$5340	

OC16

Honolulu Rail Transit Project

Total	70,000	70,000	0	295,300	244,200	51,100	360,750	275,600	85,150	195,000	150,000	45,000	177,000	135,000	42,000	169,080	129,000	40,080
-------	--------	--------	---	---------	---------	--------	---------	---------	--------	---------	---------	--------	---------	---------	--------	---------	---------	--------



Source: Esri, Maxar, GeoEye, Earthstar Geographics, CNES/Airbus DS, USDA, USGS, AeroGRID, IGN, and the GIS User Community

Project Description:

Capital improvement projects at various locations will provide safety and security aboard transit vehicles and at future and existing bus stops and transit centers, park-and-ride lots, and bus maintenance facilities.

Mile Post/s: Not applicable

Complete Streets (CS):

Project will implement: Not applicable.

Existing Feature/s: Not applicable.

ORTP Project #: OC21

Neighborhood(s): Various Locations

Estimated Total Project Cost: \$7,628,000

Total Project Cost Notes:

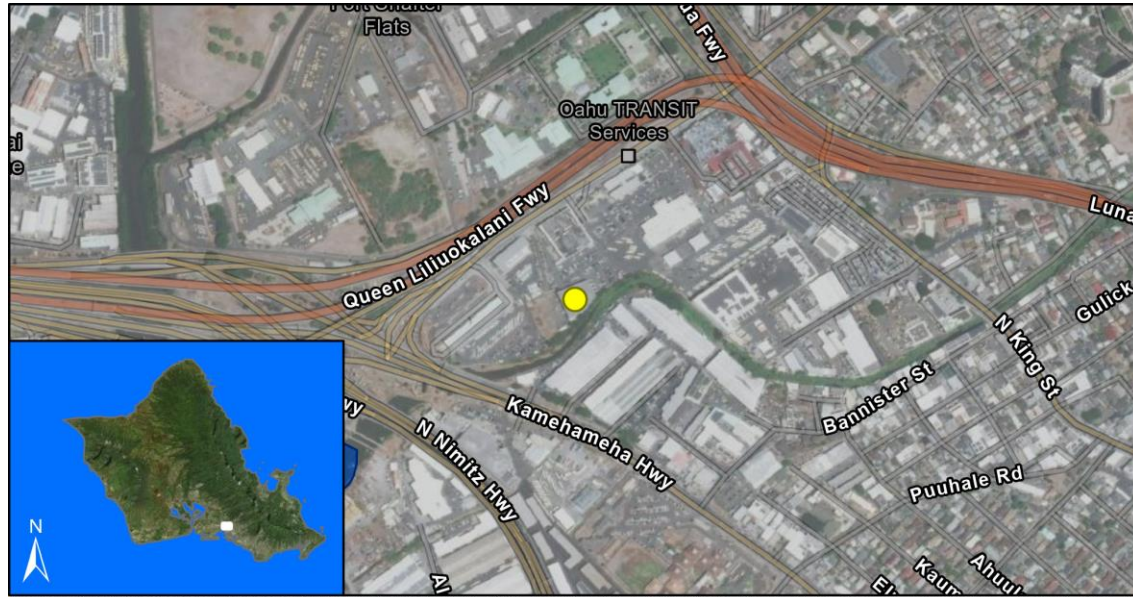
(May include project costs outside of the 4-year TIP and 2 informational years.)

Project Sponsor: City and County of Honolulu

Agency Responsible for Carrying Out Project/Phase:

City Department of Transportation Services

													FOR INFORMATION ONLY						Funding Category
FFY 2022			FFY 2023			FFY 2024			FFY 2025			FFY 2026			FFY 2027				
Total	Federal	Local	Total	Federal	Local	Total	Federal	Local	Total	Federal	Local	Total	Federal	Local	Total	Federal	Local		
Phase	(x\$1000)	(x\$1000)	(x\$1000)	(x\$1000)	(x\$1000)	(x\$1000)	(x\$1000)	(x\$1000)	(x\$1000)	(x\$1000)	(x\$1000)	(x\$1000)	(x\$1000)	(x\$1000)	(x\$1000)	(x\$1000)	(x\$1000)	(x\$1000)	
PLN	0	0	0	0	0	0	0	0	0	1	0	1	1	0	1	1	0	1	Local
DES	0	0	0	0	0	0	151	121	30	91	73	18	91	73	18	91	73	18	\$5307/\$5340
CON	2	1	1	0	0	0	0	0	0	2	1	1	2	1	1	2	1	1	\$5307/\$5340
CON	0	0	0	0	0	0	4,925	3,940	985	0	0	0	0	0	0	0	0	0	\$5307/\$5340
EQP	804	644	160	0	0	0	375	300	75	363	290	73	363	290	73	363	290	73	\$5307/\$5340
Total	806	645	161	0	0	0	5,451	4,361	1,090	457	364	93	457	364	93	457	364	93	



Source: Esri, Maxar, GeoEye, Earthstar Geographics, CNES/Airbus DS, USDA, USGS, AeroGRID, IGN, and the GIS User Community, Sources: Esri, HERE, Garmin, FAO, NOAA, USGS, © OpenStreetMap contributors, and the GIS User Community

Project Description:

Acquire property located at the Middle Street Transit Center, plan, and design the entire transit campus.

Mile Post/s:**Complete Streets (CS):**

Project will implement: Not applicable.

Existing Feature/s: Not applicable.

ORTP Project #: OC31

Neighborhood(s): Kalihi-Palama

Estimated Total Project Cost: \$42,000,000

Total Project Cost Notes: All phases are locally funded, but are re-paying a federal det.

(May include project costs outside of the 4-year TIP and 2 informational years.)

Project Sponsor: City and County of Honolulu

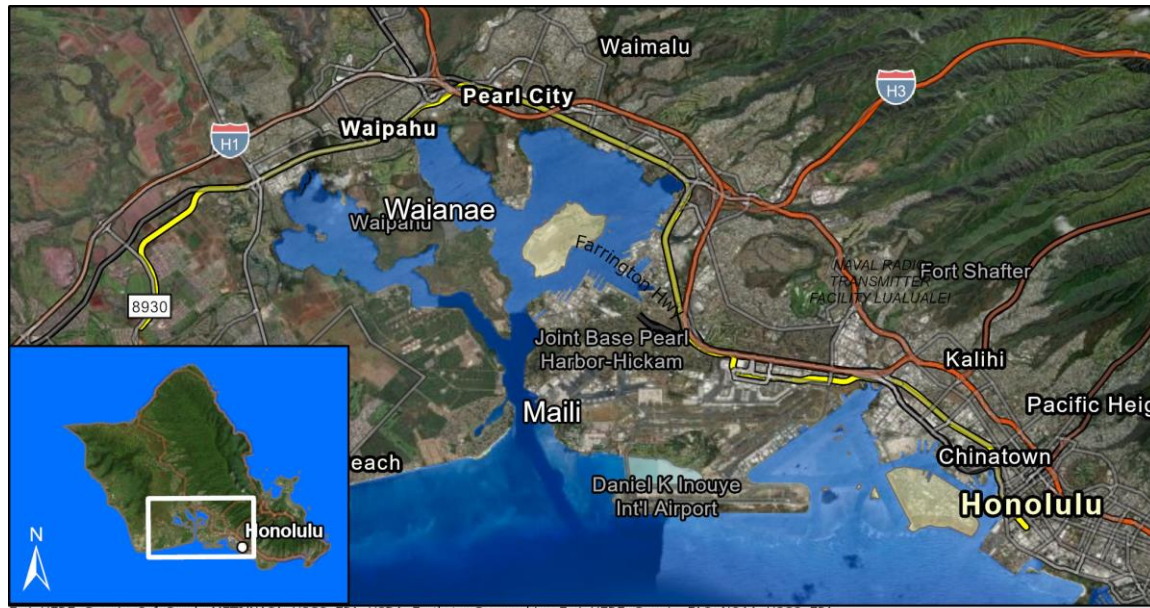
Agency Responsible for Carrying Out Project/Phase:

City Department of Transportation Services

FOR INFORMATION ONLY

Phase	FFY 2022			FFY 2023			FFY 2024			FFY 2025			FFY 2026			FFY 2027			Funding Category	
	Total (x\$1000)	Federal (x\$1000)	Local (x\$1000)	Total (x\$1000)	Federal (x\$1000)	Local (x\$1000)	Total (x\$1000)	Federal (x\$1000)	Local (x\$1000)	Total (x\$1000)	Federal (x\$1000)	Local (x\$1000)	Total (x\$1000)	Federal (x\$1000)	Local (x\$1000)	Total (x\$1000)	Federal (x\$1000)	Local (x\$1000)		
PLN	0	0	0	845	845	0	0	0	0	0	0	0	0	0	0	0	0	0	0	\$5307/\$5340
PLN	0	0	0	-845	-845	0	0	0	0	0	0	0	0	0	0	0	0	0	0	\$5307/\$5340
DES	0	0	0	0	0	0	3,337	2,915	422	0	0	0	0	0	0	0	0	0	0	\$5307/\$5340
DES	0	0	0	0	0	0	-2,915	-2,915	0	0	0	0	0	0	0	0	0	0	0	\$5307/\$5340
CON	0	0	0	0	0	0	0	0	0	0	0	0	-12,937	-12,937	0	0	0	0	0	\$5307/\$5340
INSP	0	0	0	0	0	0	0	0	0	-423	-423	0	0	0	0	0	0	0	0	\$5307/\$5340
Prior Transit Investment																				
CON	0	0	0	0	0	0	0	0	0	0	0	0	16,171	12,937	3,234	0	0	0	0	\$5307/\$5340
INSP	0	0	0	0	0	0	0	0	0	529	423	106	0	0	0	0	0	0	0	\$5307/\$5340
Total	0	0	0	0	0	0	422	0	422	106	0	106	3,234	0	3,234	0	0	0	0	

OC-21-59 Intermodal Connectivity - TA Set-Aside (OahuMPO)



Esri, HERE, Garmin, SafeGraph, METI/NASA, USGS, EPA, USDA, Earthstar Geographics, Esri, HERE, Garmin, FAO, NOAA, USGS, EPA

Project Description:

The Transportation Alternatives (TA) Set-Aside is a competitive grant program that provides funding for programs and projects defined as transportation alternatives, including on- and off-road pedestrian and bicycle facilities, infrastructure projects for improving non-driver access to public transportation and enhanced mobility, and community.

Mile Post/s:

Complete Streets (CS):

Project will implement: Project will incorporate complete streets features for both pedestrian use and bicycle use.

Existing Feature/s: No information available.

ORTP Project #: O-21-22

Neighborhood(s): Various Locations

Estimated Total Project Cost: \$43,250,000

Total Project Cost Notes:

(May include project costs outside of the 4-year TIP and 2 informational years.)

Project Sponsor: City and County of Honolulu

Agency Responsible for Carrying Out Project/Phase:

City Department of Transportation Services

FOR INFORMATION ONLY

Phase	FFY 2022			FFY 2023			FFY 2024			FFY 2025			FFY 2026			FFY 2027			Funding Category
	Total (x\$1000)	Federal (x\$1000)	Local (x\$1000)	Total (x\$1000)	Federal (x\$1000)	Local (x\$1000)	Total (x\$1000)	Federal (x\$1000)	Local (x\$1000)	Total (x\$1000)	Federal (x\$1000)	Local (x\$1000)	Total (x\$1000)	Federal (x\$1000)	Local (x\$1000)	Total (x\$1000)	Federal (x\$1000)	Local (x\$1000)	
Rail Station Multimodal Access Improvements - Halawa (Aloha Stadium) Station and Waiawa (Pearl Highlands) Station																			
PE1	0			1,250	1,000	250	0	0	0	0	0	0	0	0	0	0	0	0	\$5307/\$5340
PE2	0	0	0	0	0	0	625	500	125	0	0	0	0	0	0	0	0	0	\$5307/\$5340
PE2	0			2,642	2,113	529	0	0	0	0	0	0	0	0	0	0	0	0	\$5307/\$5340
CON	0	0	0	0	0	0	14,575	2,000	12,575	0	0	0	0	0	0	0	0	0	\$5307/\$5340
CON	0	0	0	0	0	0	1,750	1,400	350	0	0	0	0	0	0	0	0	0	\$5307/\$5340
INSP	0	0	0	0	0	0	3,000	181	2,819	0	0	0	0	0	0	0	0	0	\$5307/\$5340
Total	0	0	0	3,892	3,113	779	19,950	4,081	15,869	0	0	0	0	0	0	0	0	0	

OC-22-66 Intermodal Connectivity - TA Set-Aside (State)



Esri, HERE, Garmin, SafeGraph, METI/NASA, USGS, EPA, USDA, Earthstar Geographics, Esri, HERE, Garmin, FAO, NOAA, USGS, EPA

Project Description:

The Transportation Alternatives (TA) Set-Aside is a competitive grant program that provides funding for programs and projects defined as transportation alternatives, including on- and off-road pedestrian and bicycle facilities, and infrastructure projects for improving non-driver access to public transportation and enhanced mobility, and community improvement activities. Locations to be determined by the State TA Project Evaluation and Ranking process.

Mile Post/s:

Complete Streets (CS):

Project will implement: Project will incorporate complete streets features for both pedestrian use and bicycle use.

Existing Feature/s: No information available.

ORTP Project #: O-21-22

Neighborhood(s): Various Locations

Estimated Total Project Cost: \$43,250,000

Total Project Cost Notes:

(May include project costs outside of the 4-year TIP and 2 informational years.)

Project Sponsor: City and County of Honolulu

Agency Responsible for Carrying Out Project/Phase:

City Department of Transportation Services

													FOR INFORMATION ONLY						
	FFY 2022			FFY 2023			FFY 2024			FFY 2025			FFY 2026			FFY 2027			
	Total	Federal	Local	Total	Federal	Local	Total	Federal	Local	Total	Federal	Local	Total	Federal	Local	Total	Federal	Local	Funding Category
Phase	(x\$1000)	(x\$1000)	(x\$1000)	(x\$1000)	(x\$1000)	(x\$1000)	(x\$1000)	(x\$1000)	(x\$1000)	(x\$1000)	(x\$1000)	(x\$1000)	(x\$1000)	(x\$1000)	(x\$1000)	(x\$1000)	(x\$1000)	(x\$1000)	
University of Hawaii West Oahu (UHWO) Rail Station Multimodal Access Improvements																			
CON	0	0	0	0	0	0	3,000	2,400	600	0	0	0	0	0	0	0	0	0	\$5307/\$5340
Rail Station Multimodal Access Improvements - Halawa (Aloha Stadium) Station and Waiawa (Pearl Highlands) Station																			
CON	0	0	0	0	0	0	8,100	6,480	1,620	0	0	0	0	0	0	0	0	0	\$5307/\$5340
CON	0	0	0	0	0	0	7,250	5,800	1,450	0	0	0	0	0	0	0	0	0	\$5307/\$5340
INSP	0	0	0	0	0	0	1,125	900	225	0	0	0	0	0	0	0	0	0	\$5307/\$5340
INSP	0	0	0	0	0	0	900	720	180	0	0	0	0	0	0	0	0	0	\$5307/\$5340
Total	0	0	0	0	0	0	20,375	16,300	4,075	0	0	0	0	0	0	0	0	0	



Esri, HERE, Garmin, SafeGraph, METI/NASA, USGS, EPA, USDA, Earthstar Geographics, Esri, HERE, Garmin, FAO, NOAA, USGS, EPA

Project Description:

Acquire land, plan, design, construct and inspect improvements to intermodal centers and transit complete street connections within communities.

Mile Post/s:

Complete Streets (CS):

Project will implement: Project will incorporate complete streets features for both pedestrian use and bicycle use.

Existing Feature/s: No information available.

ORTP Project #: O-21-22

Neighborhood(s): Various Locations

Estimated Total Project Cost: \$132,000,000

Total Project Cost Notes:

(May include project costs outside of the 4-year TIP and 2 informational years.)

Project Sponsor: City and County of Honolulu

Agency Responsible for Carrying Out Project/Phase:

City Department of Transportation Services

													FOR INFORMATION ONLY						Funding Category
FFY 2022			FFY 2023			FFY 2024			FFY 2025			FFY 2026			FFY 2027				
	Total	Federal	Local	Total	Federal	Local	Total	Federal	Local	Total	Federal	Local	Total	Federal	Local	Total	Federal	Local	
Phase	(x\$1000)	(x\$1000)	(x\$1000)	(x\$1000)	(x\$1000)	(x\$1000)	(x\$1000)	(x\$1000)	(x\$1000)	(x\$1000)	(x\$1000)	(x\$1000)	(x\$1000)	(x\$1000)	(x\$1000)	(x\$1000)	(x\$1000)	(x\$1000)	
PE1	0	0	0	200	0	200	100	0	100	500	0	500	200	0	200	200	0	200	\$5307/\$5340
PE2	0	0	0	800	0	800	500	0	500	1,200	0	1,200	800	0	800	800	0	800	\$5307/\$5340
CON	0	0	0	4,429	1,829	2,600	9,640	6,620	3,020	4,000	0	4,000	4,500	0	4,500	4,500	0	4,500	\$5307/\$5340
INSP	0	0	0	400	0	400	780	0	780	500	0	500	500	0	500	500	0	500	\$5307/\$5340
Total	0	0	0	5,829	1,829	4,000	11,020	6,620	4,400	6,200	0	6,200	6,000	0	6,000	6,000	0	6,000	



Source: Esri, Maxar, GeoEye, Earthstar Geographics, CNES/Airbus DS, USDA, USGS, AeroGRID, IGN, and the GIS User Community

Project Description:

Plan, design, construct, inspect and provide related equipment to City facilities infrastructure upgrade for electric charging stations. Projects may be flexed from FHWA to FTA.

Mile Post/s:

Complete Streets (CS):

Project will implement: Not applicable.

Existing Feature/s: Not applicable.

ORTP Project #: O-21-18

Neighborhood(s): Various Locations

Estimated Total Project Cost: \$86,000,000

Total Project Cost Notes:

(May include project costs outside of the 4-year TIP and 2 informational years.)

Project Sponsor: City and County of Honolulu

Agency Responsible for Carrying Out Project/Phase:

City Department of Design and Construction

													FOR INFORMATION ONLY						
	FFY 2022			FFY 2023			FFY 2024			FFY 2025			FFY 2026			FFY 2027			
	Total	Federal	Local	Total	Federal	Local	Total	Federal	Local	Total	Federal	Local	Total	Federal	Local	Total	Federal	Local	
Phase	(x\$1000)	(x\$1000)	(x\$1000)	(x\$1000)	(x\$1000)	(x\$1000)	(x\$1000)	(x\$1000)	(x\$1000)	(x\$1000)	(x\$1000)	(x\$1000)	(x\$1000)	(x\$1000)	(x\$1000)	(x\$1000)	(x\$1000)	(x\$1000)	Funding Category
PE1	0	0	0	100	0	100	100	0	100	50	0	50	50	0	50	50	0	50	\$5307/\$5340
PE2	0	0	0	1,300	0	1,300	100	0	100	50	0	50	450	0	450	450	0	450	\$5307/\$5340
CON	0	0	0	7,063	0	7,063	10,000	8,000	2,000	4,900	0	4,900	4,500	3,600	900	4,500	3,600	900	\$5307/\$5340
INSP	0	0	0	0	0	0	200	160	40	200	0	200	200	160	40	200	160	40	\$5307/\$5340
Alapai On Route Chargers																			
CON	0	0	0	4,555	2,505	2,050	0	0	0	0	0	0	0	0	0	0	0	0	\$5339
Pearl City Bus Facility - FY23 Low No Installation of Electric Bus Charging Systems																			
CON	0	0	0	0	0	0	9,161	8,245	916	0	0	0	0	0	0	0	0	0	\$5307/\$5340
Pearl City Bus Facility - Ph 1 Installation of Electric Bus Charging Systems																			
CON	0	0	0	0	0	0	25,000	22,500	2,500	0	0	0	0	0	0	0	0	0	\$5307/\$5340
Pearlridge En Route Chargers																			
CON	0	0	0	0	0	0	2,533	2,280	253	0	0	0	0	0	0	0	0	0	\$5307/\$5340
CON	0	0	0	0	0	0	1,667	1,500	167	0	0	0	0	0	0	0	0	0	\$5337
CON	0	0	0	0	0	0	4,000	3,600	400	0	0	0	0	0	0	0	0	0	\$5339

OC-22-68 Electrification of Transportation Infrastructure

Total	0	0	0	13,018	2,505	10,513	52,761	46,285	6,476	5,200	0	5,200	5,200	3,760	1,440	5,200	3,760	1,440
-------	---	---	---	--------	-------	--------	--------	--------	-------	-------	---	-------	-------	-------	-------	-------	-------	-------



Source: Esri, Maxar, GeoEye, Earthstar Geographics, CNES/Airbus DS, USDA, USGS, AeroGRID, IGN, and the GIS User Community

Project Description:

Expand Honolulu HOLO Smart Card System to be available Statewide at all Hawaii Public Transit Systems.

Mile Post/s:

Complete Streets (CS):

Project will implement: Not applicable.

Existing Feature/s: Not applicable.

ORTP Project #: O-21-18

Neighborhood(s): Island wide

Estimated Total Project Cost: \$10,344,000

Total Project Cost Notes:

(May include project costs outside of the 4-year TIP and 2 informational years.)

Project Sponsor: City and County of Honolulu

Agency Responsible for Carrying Out Project/Phase:

City Department of Transportation Services

Phase	FFY 2022			FFY 2023			FFY 2024			FFY 2025			FOR INFORMATION ONLY						Funding Category	
	Total (x\$1000)	Federal (x\$1000)	Local (x\$1000)	Total (x\$1000)	Federal (x\$1000)	Local (x\$1000)	Total (x\$1000)	Federal (x\$1000)	Local (x\$1000)	Total (x\$1000)	Federal (x\$1000)	Local (x\$1000)	FFY 2026			FFY 2027				
													Total (x\$1000)	Federal (x\$1000)	Local (x\$1000)	Total (x\$1000)	Federal (x\$1000)	Local (x\$1000)		
PE1	0	0	0	0	0	0	1,552	1,250	302	0	0	0	0	0	0	0	0	0	0	HIP-CPF/CDS
EQP	0	0	0	0	0	0	8,792	7,025	1,767	0	0	0	0	0	0	0	0	0	0	HIP-CPF/CDS
Total	0	0	0	0	0	0	10,344	8,275	2,069	0	0	0	0	0	0	0	0	0	0	