

TRANSPORTATION IMPROVEMENT PROGRAM

FEDERAL FISCAL YEARS 2022 – 2025

Revision 16

Administrative Modification

December 2023



This report was funded in part through grants from the Federal Highway Administration and Federal Transit Administration, U.S. Department of Transportation. The views and opinions of the agency expressed herein do not necessarily state or reflect those of the U.S. Department of Transportation.

Table of Contents

ABBREVIATIONS.....	3
INTRODUCTION	6
REVISION PROCESS.....	8
REVISION HISTORY	14
REVISIONS	15
PROJECTS.....	23

ABBREVIATIONS

Acronyms

ADA	Americans with Disabilities Act
CAC	Citizen Advisory Committee
CFR	Code of Federal Regulations
CMP	Congestion Management Process
DDC	City and County of Honolulu Department of Design and Construction
DTS	City and County of Honolulu Department of Transportation Services
EJ	Environmental Justice
FHWA	Federal Highway Administration
FTA	Federal Transit Administration
FFY	Federal Fiscal Year (October 1- September 30)
HART	Honolulu Authority for Rapid Transportation
HDOT	Hawaii Department of Transportation
HSIP	Highway Safety Improvement Program
IGR	Intergovernmental Review
OahuMPO	Oahu Metropolitan Planning Organization
OCCSR	City and County of Honolulu Office of Climate Change, Sustainability and Resiliency
ORTP	Oahu Regional Transportation Plan
STIP	Statewide Transportation Improvement Program
TAC	Technical Advisory Committee
TAM	Transit Asset Management
TIP	Transportation Improvement Program
T6	Title VI of the Civil Rights Act of 1964
U.S.C.	United States Code

Funding Categories

Federal Highway Administration (FHWA)

Bridge OS	Bridge Off-System
Earmark	Earmark
FHWA Grant	FHWA Competitive Grants
FLAP	Federal Lands Highway Discretionary
HIP-BFP	Highway Infrastructure Program - Bridge Formula Program
HIP-CPF/CDS	Highway Infrastructure Program - Community Project Funding / Congressionally Directed Spending
HSIP	Highway Safety Improvement Program
NHPP	National Highway Performance Program
RHCP	Railway-Highway Crossing Program
STBG	Surface Transportation Block Grant Program
STP Enhance	Surface Transportation Program Enhancement
TA	Transportation Alternatives Set-Aside

Federal Transit Administration (FTA)

\$5307/5340	Urbanized Area Formula Grants / Growing States/High Density States Program
\$5309	Capital Investment Grants
\$5310	Enhanced Mobility of Seniors & Individuals with Disabilities
\$5329	State Safety Oversight Program
\$5337	State of Good Repair Program
\$5339	Bus and Bus Facilities Program
FTA Grant	FTA Competitive Grants
Discretionary	Congressional Discretionary Spending

Local

Local	Local Funds
-------	-------------

Project Phases (In Chronological Order)

H RTP	Honolulu Rail Transit Project
PLN	Planning
PE1	Preliminary Engineering – Part 1: Environmental Clearances and Design Work
PE2	Preliminary Engineering – Part 2: Final Design
DES	Design
PREROW	Preliminary Right-of-Way Activities
ROW	Right-of-Way Acquisition
PE2/CON	Final Design-Build
DES/CON	Design-Build
ADVCON	Advance Construction
CON	Construction
EQP	Equipment acquisition
REL	Relocation expenses
OPR	Operation expenses
INSP	Inspection

INTRODUCTION

The Transportation Improvement Program (TIP) is a short-term program, which lists all surface transportation projects or phases of projects on the island of Oahu that:

- Are regionally significant projects
- Use Federal Highway Administration (FHWA) or Federal Transit Administration (FTA) funding for projects including transportation alternatives, transit improvements, Federal Lands Transportation Program (FLTP) and Federal Lands Access Program (FLAP), Highway Safety Improvement Program (HSIP), trails, pedestrian walkways, and bicycle facilities except the following:
 - Safety projects under the Highway Safety Program and the Motor Carrier Safety Assistance Program
 - Metropolitan planning projects under the Unified Planning Work Program
 - State planning and research projects under State Planning and Research and Planning Programs
 - Emergency relief projects (except those involving substantial functional, locational, or capacity changes)
 - National planning and research projects under Technical Assistance and Workforce Development
 - Project management oversight projects under Project Management Oversight
- Require action by the FHWA or FTA (e.g., adding a freeway interchange with non-Federal funds)

Each project or project phase in the TIP must be consistent with the Oahu Regional Transportation Plan (ORTP). Projects or phases of projects can only be included if full funding can reasonably be anticipated to be available within the time period for completion of the project. Fiscal constraint must be demonstrated and maintained by year and include sufficient financial information to demonstrate which projects are to be implemented using current and/or reasonably available revenues. The TIP is also required to include a financial plan that demonstrates how the TIP can be implemented, identifies funding sources that are reasonably expected to be made available and any additional financing needed to carry out the TIP.

The TIP covers a period of four years plus two additional years for informational purposes. The TIP is updated every three years to provide a one-year overlap between updates and revised at least twice every Federal fiscal year (FFY) or as needed which is compatible with the Statewide Transportation Improvement Program (STIP) development and revision process. The TIP expires when the FHWA/FTA approval of the STIP expires.

REVISION PROCESS

Between updates every three years, the TIP is revised twice a year following the Semi-Annual Revision Schedule or as needed (e.g., in response to natural and other disasters, situations where federal funds are at risk or become available) using an Out-of-Cycle Revision Schedule with processing time subject to the type of change described below. Either schedule is compatible with the STIP revision process.

A minor change is an Administrative Modification while a major change is an Amendment.

An Administrative Modification is a minor change in cost to a project or project phase, a minor change to funding sources, a minor change to the start or end date of a project or project phase, a minor change in design concept or design scope, minor corrections, or adding, modifying, or removing a project or project phase involving advance construction. This revision does not require public review and comment or a redemonstration of fiscal constraint. An Administrative Modification does not require recommendation by the CAC and TAC or Policy Board approval. However, the Policy Board will be provided a copy of the Administrative Modification.

An Amendment is a major change to a project or project phase including the addition or deletion of a project, a major change in cost to a project or project phase, a major change to the start or end date of a project or project phase, a major change in design concept or design scope (e.g., changing project termini or the number of through traffic lanes or changing the number of stations in the case of fixed guideway transit projects). Changes to a project that is included only for illustrative purposes does not require an Amendment. This revision requires a public review and comment period and a redemonstration of fiscal constraint. An Amendment requires recommendation by the CAC and TAC for Policy Board approval.

The OahuMPO will determine the type of revision using the Administrative Modification and Amendment Decision Table below. If the type of revision cannot be determined, the OahuMPO will consult with the partner agencies. Misspellings, typos, and other data entry errors will be corrected by the OahuMPO in cooperation with the partner agencies and is not considered

a revision.

Administrative Modification and Amendment Decision Table

Type of Change	A. Administrative Modification	B. Amendment
1. Adding or removing a project in the first four years of the TIP		X
2. A major change in cost to a project or project phase in the first four years of the TIP that exceeds both \$10 million and 25% of the estimated total project cost before the proposed increase, excluding the current inflation rate ¹		X
3. A major change to the start or end date of a project or project phase: 3.1. Moving a project to the illustrative years 3.2. Deferring a project phase to a year that is outside of the first four years of the TIP when there are no other project phases in the first four years		X
4. A major change in design concept or design scope: 4.1 Changing project termini 4.2 Changing the number of through traffic lanes 4.3 Changing the number of stations in the case of fixed guideway transit projects 4.4 Changing the purpose and need (e.g., shoreline protection to capacity) 4.5 Changing between replacement buses and expansion buses 4.6 Adding a project phase to an existing project with major changes in cost defined in B.2		X

Type of Change	A. Administrative Modification	B. Amendment
5. A major change in funding sources: 5.1. Transferring (flexing) funds between Federal agencies that is greater than \$10 million		X
6. A minor change in design concept or design scope: 6.1. Splitting or grouping projects as long as the design concept or design scope remains unchanged with minor changes in cost to a project or project phase defined in A.8 6.2. Adding or deleting projects from grouped listings as long as the design concept or design scope remains unchanged with minor changes in cost to a project or project phase defined in A.8 6.3. Changing the design scope to accommodate prescribed actions under NEPA. 6.4. Adding a project phase to an existing project with minor changes in cost defined in A.8	X	
7. Changes to a project or project phase that is included only for illustrative purposes	X	
8. A minor change in cost to a project or project phase in the first four years of the TIP that is below the thresholds defined in B.2	X	

Type of Change	A. Administrative Modification	B. Amendment
9. A minor change to funding sources: 9.1. Transferring (flexing) funds between Federal agencies that is below the threshold defined in B.5.1 9.2. Changing funding sources within the same Federal agency 9.3. Changing funding sources between Federal, local, and state agencies 9.4. Adding discretionary funds (e.g., congressional earmarks)	X	
10. A minor change to the start or end date of a project or project phase: 10.1. Advancing a project from the programmed year 10.2. Deferring a project to a later year within the first four years of the TIP 10.3. Deleting or deferring a project phase to a year outside of the first four years of the TIP as long as another phase of the project remains within the first four years and the design concept or design scope remains unchanged	X	
11. Adding, modifying, or removing a project or project phase involving advance construction	X	

1. Approved by the OahuMPO Policy Board on February 28, 2023, on the condition that the cost threshold for a major change to a project or project phase (see 2.B in the Administrative Modification and Amendment Decision Table) will automatically revert from \$10 million to \$5 million at the end of one year from the approval date unless approved by the Policy Board on a permanent basis.

Semi-Annual Revision Schedule - Administrative Modification

Activity	Fall Revision	Spring Revision
OSR meetings	October	March
Agencies submit revisions	November	April
Development of the draft TIP revision	November - December	April - May
TIP approval, STIP incorporation, and FHWA/FTA approval	January	June
Total processing time	4 months	4 months

Semi-Annual Revision Schedule - Amendment

Activity	Fall Revision	Spring Revision
OSR meetings	October	March
Agencies submit revisions	November	April
Development of the draft TIP revision	November - December	April - May
Public comment and intergovernmental review	December - January	May - June
Response to comments	January	June
Committees and Policy Board	February	July
TIP approval, STIP incorporation, and FHWA/FTA approval	March	August
Total processing time	6 months	6 months

Out-of-Cycle Revision Schedule

Activity	Administrative Modification	Amendment
Agencies submit revisions	1-3 days	1-3 days
Development of the draft TIP revision	At least 1 week	At least 2 weeks due to technical analysis (e.g., CMP, fiscal constraint, new project scoring, and T6/EJ analysis)
Public comment and intergovernmental review		2 weeks
Response to comments		1 week
Committees and Policy Board		At least 4 weeks due to the Committees and Policy Board schedule
TIP approval, STIP incorporation, and FHWA/FTA approval	At least 1 week	At least 1 week
Total processing time	At least 2 weeks	At least 10 weeks

REVISION HISTORY

The TIP FFYs 2022-2025 was approved by the Policy Board in July 2021 and has been revised 15 times through May 2023. A summary is provided in the table below.

Revision #	Revision Type	Date	# Of Projects Modified	# Of Projects Removed	# Of Projects Added	Total # Of Projects Revised
1	Pre-Approved Administrative Modification	January 2022	37	0	0	37
2	Expedited Administrative Modification	February 2022	6	0	0	6
3	Amendment	February 2022	6	1	6	13
4	Pre-Approved Administrative Modification	May 2022	19	0	0	19
5	Expedited Administrative Modification	June 2022	1	0	0	1
6	Amendment	June 2022	3	1	4	8
7	Expedited Administrative Modification	July 2022	1	0	0	1
8	Pre-Approved Administrative Modification	September 2022	1	0	0	1
9	Pre-Approved Administrative Modification	December 2022	34	0	0	34
10	Expedited Administrative Modification	March 2023	2	0	0	2
11	Amendment	March 2023	5	0	10	15
12	Administrative Modification	March 2023	1	0	0	1
13	Administrative Modification	April 2023	2	0	0	2
14	Administrative Modification	May 2023	31	0	0	31
15	Amendment	May 2023	4	3	6	13
Total			153	5	26	184

REVISIONS

The following tables list the revisions grouped by the type of federal funding (e.g., FHWA, FTA) and project sponsor (e.g., HDOT, DTS).

FHWA Funded Projects: Hawaii Department of Transportation

Project #	Project Name	Revision Details
OS4	Farrington Highway (Route 93), Bridge Replacement, Makaha Bridges #3 & #3A	Request to add remaining \$1M for ADVCON in FFY 2024 (A.11).
OS5	Freeway Management System, Interstate H-1, H-2, and Moanalua Freeway (Routes H-201 and 78)	Phase 4: Request to increase CON funds in FFY 2025 from \$10.5M to \$12M based on the current estimate (A.8).
OS5	Freeway Management System, Interstate H-1, H-2, and Moanalua Freeway (Routes H-201 and 78)	Request to add Phase 3, Unit 2 to include \$8M for ADVCON in FFYs 2025-2026 and \$12M for CON in FFY 2024 (A.6.2).
OS12	Destination Sign, Upgrade/Replacement	Request to defer \$469K for PE2 from FFY 2025 to FFY 2026 since the NEPA clearance will take 2 years but this should not affect the CON date (A.10.3)
OS20	Interstate Route H-1 Safety Improvements, Beginning of H-1 (Palailai Interchange) to Waiawa Overpass	Request to add remaining \$1M for AC in FFY 2024 (A.11).
OS26	Kalanianaʻole Highway (Route 72) Resurfacing, Poalima Street to Vicinity of Makai Pier	Request to remove \$3M for ADVCON in FFY 2024 since it will be fully converted (A.11).
OS31	Kamehameha Highway (Route 83), Bridge Replacement, Laieloa Stream Bridge	Request to decrease ADVCON funds from \$4M to \$2M in FFY 2025 to reflect lower needs (A.11).
OS34	Kamehameha Highway (Route 83), Bridge Replacement, Waiahole Stream Bridge	Request to update CON to PE2/CON.
OS36	Kamehameha Highway (Route 83), Bridge Replacement, Waipilopilo Stream Bridge	Request to add \$1M for PE2 in FFY 2024 to federalize additional funding needs (A.6.4).
OS36	Kamehameha Highway (Route 83), Bridge Replacement, Waipilopilo Stream Bridge	Request to defer and inflate ROW funds from \$1M in FFY 2023 to \$1.05M FFY 2024 since PE1/NEPA clearance is still ongoing and ROW requirements are not set (A.10.2).
OS36	Kamehameha Highway (Route 83), Bridge Replacement, Waipilopilo Stream Bridge	Request to increase the estimated total project cost from \$12,300,000 to \$12,550,000 (A.8).
OS45	Moanalua Freeway (route H-201), Highway Lighting Improvements, Halawa Heights Off-Ramp to Middle Street Overpass	Request to reduce ADVCON funds from \$3M to \$2M in FFY 2024 as more ADVCON was converted earlier (A.11).
OS62	Pali Hwy (Rte 61) Resurfacing & Lighting Improvements, Vineyard Blvd (Rte 98) to Kamehameha Hwy (Rte 83)	Phase 2: Request to remove \$13M for ADVCON funds in FFY 2025 and FFY 2026 (A.11).
OS70	Interstate Route H-1, Seismic Retrofit, Waialae Viaduct	Request to decrease CON funds from \$6.2M to \$4M in FFY 2024 since seismic work is not as extensive as previously thought (A.8).
OS70	Interstate Route H-1, Seismic Retrofit, Waialae Viaduct	Request to defer and decrease PE2 funds from \$1.02M in FFY 2023 to \$261K in FFY 2024 since NEPA CatEx was delayed (A.8, A.10.2).
OS75	Kamehameha Highway (Route 83), Rockfall Protection, Waimea Bay	Haleiwa Phase: Request to defer and decrease CON funds from \$21M in FFY 2025 to \$15M in FFY 2026 to reflect PE2 schedule (A.8, A.10.3).
OS75	Kamehameha Highway (Route 83), Rockfall Protection, Waimea Bay	Haleiwa Phase: Request to defer and inflate PE2 from \$857K in FFY 2024 to \$900K in FFY 2025 as the NEPA clearance will not be

FHWA Funded Projects: Hawaii Department of Transportation

Project #	Project Name	Revision Details
		complete in time to proceed to ROW acquisition or PE2 in FFY 2024 (A.10.2).
OS75	Kamehameha Highway (Route 83), Rockfall Protection, Waimea Bay	Haleiwa Phase: Request to remove \$5M for ADVCON funds in FFY 2026 since CON was deferred (A.8).
OS75	Kamehameha Highway (Route 83), Rockfall Protection, Waimea Bay	Sunset Beach Phase: Request to add \$3M for ADVCON funds in FFY 2025 for fiscal constraint (A.11).
OS75	Kamehameha Highway (Route 83), Rockfall Protection, Waimea Bay	Sunset Beach Phase: Request to advance and decrease CON funds from \$9.2M in FFY 2027 to \$8M FFY 2024 since the project is awaiting an FHWA grant (A.8, A.10.1).
OS75	Kamehameha Highway (Route 83), Rockfall Protection, Waimea Bay	Waimea Bay Phase: Request to defer and inflate ROW from \$536K in FFY 2024 to \$563K in FFY 2025 as the NEPA clearance will not be complete in time to proceed to ROW acquisition or PE2 in FFY 2024 (A.10.2).
OS79	Shoreline Protection/Mitigation Program	Priority 1 (Immediate/Short-Term) - Kamehameha Highway, Shoreline Mitigation - Kaaawa Elementary: Request to defer and inflate CON funds from \$3M in FFY 2023 to \$3.15M in FFY 2024 since it was not obligated (A.10.2).
OS79	Shoreline Protection/Mitigation Program	Priority 1 (Immediate/Short-Term) - Kamehameha Highway, Shoreline Mitigation - Kaaawa Elementary: The project is awaiting a FHWA grant or will use lapsing State only funds in 2024.
OS79	Shoreline Protection/Mitigation Program	Priority 1 (Immediate/Short-Term) - Kamehameha Hwy, Experimental Sandsaver Installation - Kualoa: Request to remove Bell Street from the scope due to community concerns (A.6) and decrease CON funds from \$2.1M to \$1M in FFY 2024 (A.8).
OS79	Shoreline Protection/Mitigation Program	Priority 1, Phase 1 - Kamehameha Hwy, Shoreline Mitigation - KKPH: Request to add \$1.5M for PE2 in FFY 2025 to federalize phase (A.6.4).
OS79	Shoreline Protection/Mitigation Program	Priority 1, Phase 1 - Kamehameha Hwy, Shoreline Mitigation - KKPH: Request to add the specific location (KKPH) to the scope (A.6).
OS79	Shoreline Protection/Mitigation Program	Priority 1, Phase 1 - Kamehameha Hwy, Shoreline Mitigation - KKPH: Request to defer and increase CON funds from \$21M in FFY 2025 to \$30M in FFY 2027 based on updated schedule/estimate (A.8, A.10.3).
OS79	Shoreline Protection/Mitigation Program	Priority 1, Phase 1 - Kamehameha Hwy, Shoreline Mitigation - KKPH: Request to defer and reduce ROW funds from \$1.04M in FFY 2024 to \$200K in FFY 2025 as NEPA will not be cleared in time to proceed to ROW or PE2 in 2024 (A.8, A.10.2).
OS79	Shoreline Protection/Mitigation Program	Priority 1, Phase 1 - Kamehameha Hwy, Shoreline Mitigation - KKPH: Request to remove \$3.8M in FFY 2026 and \$10M in FFY 2027 for ADVCON since CON was deferred (A.11)

FHWA Funded Projects: Hawaii Department of Transportation

Project #	Project Name	Revision Details
OS79	Shoreline Protection/Mitigation Program	Priority 1, Phase 2 - Kamehameha Hwy, Shoreline Mitigation - KKP: Request to add \$1.5M for PE2 in FFY 2026 to federalize phase (A.6.4).
OS79	Shoreline Protection/Mitigation Program	Priority 1, Phase 2 - Kamehameha Hwy, Shoreline Mitigation - KKP: Request to add the specific location (KKP) to the scope (A.6).
OS79	Shoreline Protection/Mitigation Program	Priority 1, Phase 2 - Kamehameha Hwy, Shoreline Mitigation - KKP: Request to defer \$20M for CON funds in FFY 2025 to a year beyond FFY 2027 based on the updated schedule (A.10.3).
OS79	Shoreline Protection/Mitigation Program	Priority 1, Phase 2 - Kamehameha Hwy, Shoreline Mitigation - KKP: Request to defer and inflate ROW funds from \$500K in FFY 2024 to \$550K in FFY 2026 as NEPA will not be cleared in time to advance to ROW or PE2 in FFY 2024 (A.10.3).
OS79	Shoreline Protection/Mitigation Program	Priority 1, Phase 2 - Kamehameha Hwy, Shoreline Mitigation - KKP: Request to remove \$5M in FFY 2026 and \$8M in FFY 2027 for ADVCON since CON is being deferred out (A.11).
OS79	Shoreline Protection/Mitigation Program	Priority 2 (Mid/Long-Term) - Farrington Hwy, Coastal Hwy Mitigation - Keaau Stream Bridge: Request to defer \$375K for PE2 in FFY 2027 to a year beyond FFY 2027 based on the updated schedule (A.10.3).
OS79	Shoreline Protection/Mitigation Program	Priority 2 (Mid/Long-Term) - Farrington Hwy, Coastal Hwy Mitigation - Keaau Stream Bridge: Request to defer \$52K for ROW in FFY 2027 to a year beyond FFY 2027 based on the updated schedule (A.10.3).
OS79	Shoreline Protection/Mitigation Program	Priority 2 (Mid/Long-Term) - Farrington Hwy, Coastal Hwy Mitigation - Keaau Stream Bridge: Request to defer and inflate PE1 funds from \$570K in FFY 2025 to \$600K in FFY 2026 based on the updated schedule (A.10.3).
OS79	Shoreline Protection/Mitigation Program	Priority 2 (Mid/Long-Term) - Kalanianaʻole Hwy, Coastal Hwy Mitigation - Kaupo Cave: Request to defer \$1.2M for PE1 in FFY 2027 to FFY 2029 based on the updated schedule (A.10.3).
OS-21-45	Pali Highway, Rockfall Mitigation, Vicinity of MP 5.9 to MP 6.55	Request to add project OS-21-44 and change MP limits from "5.9-6.1" to "5.9-6.55" (A.6.1).
OS-21-45	Pali Highway, Rockfall Mitigation, Vicinity of MP 5.9 to MP 6.55	Request to defer \$4.2M for CON funds in FFY 2027 to a year beyond FFY 2027 (A.10.3).
OS-21-45	Pali Highway, Rockfall Mitigation, Vicinity of MP 5.9 to MP 6.55	Request to defer and increase PE1 funds from \$390K in FFY 2023 to \$1M in FFY 2024 to include project OS-21-44 (A.10.2).
OS-21-45	Pali Highway, Rockfall Mitigation, Vicinity of MP 5.9 to MP 6.55	Request to defer and increase PE2 funds from \$252K in FFY 2025 to \$800K in FFY 2027 based on new estimates and schedule (A.10.3).
OS-21-45	Pali Highway, Rockfall Mitigation, Vicinity of MP 5.9 to MP 6.55	Request to defer and increase ROW funds from \$26K in FFY 2025 to \$100K in FFY 2027 based on new estimates and schedule (A.10.3).
OS-21-45	Pali Highway, Rockfall Mitigation, Vicinity of MP 5.9 to MP 6.55	Request to increase the estimated total project cost from \$5,000,000 to \$18,000,000 (A.8).

FHWA Funded Projects: Hawaii Department of Transportation

Project #	Project Name	Revision Details
OS-21-46	Interstate Route H-1, Kunia Interchange Improvements	Request to defer \$14M in local funds PE2 from FFY 2025 to FFY 2028 since NEPA will not be completed until then (A.10.3).
OS-21-50	Interstate Route H-3, Halawa Valley Mitigation, Phase 3, Gate 3 to Native Species Area	Request to add \$2M for ADVCON in FFY 2026 for fiscal constraint (A.11).
OS-21-50	Interstate Route H-3, Halawa Valley Mitigation, Phase 3, Gate 3 to Native Species Area	Request to defer \$5.2M for CON from FFY 2024 to FFY 2025 since community engagement is still ongoing (A.10.2).
OS-21-56	Interstate Route H-3, Halawa Valley Mitigation, Phase 2, Native Species Area to Tunnel Portal	Request to add \$2M for ADVCON in FFY 2026 for fiscal constraint (A.11).
OS-21-56	Interstate Route H-3, Halawa Valley Mitigation, Phase 2, Native Species Area to Tunnel Portal	Request to defer \$5.1M for CON from FFY 2024 to FFY 2025 since community engagement is still ongoing (A.10.2).
OS-23-66	Interstate Route H-2, Panakauahi 3-144 and 4-144 Culvert Rehabilitation	Request to increase AC funds from \$3M to \$6M in FFY 2026 (A.11).
OS-23-66	Interstate Route H-2, Panakauahi 3-144 and 4-144 Culvert Rehabilitation	Request to increase CON funds from \$12M to \$16M in FFY 2024 to reflect updated cost estimate (A.8).
OS-23-66	Interstate Route H-2, Panakauahi 3-144 and 4-144 Culvert Rehabilitation	Request to increase the estimated total project cost from \$13,000,000 to \$17,000,000 (A.8).
OS-23-70	Likeline Highway (Rte 63), Tunnel Rehabilitation, Wilson Tunnels	Phase 2: Request to reduce CON funds from \$45M to \$44M in FFY 2026 since project will be implemented in 2 phases (A.8).
OS-23-70	Likeline Highway (Rte 63), Tunnel Rehabilitation, Wilson Tunnels	Request to increase the estimated total project cost from \$47,320,000 to \$54,000,000 (A.8).
OS-23-70	Likeline Highway (Rte 63), Tunnel Rehabilitation, Wilson Tunnels	Request to split the project into 2 phases (A.4.6).

FHWA Funded Projects: City & County of Honolulu

Project #	Project Name	Revision Details
OC26	Transportation Alternative Program (State)	Rail Station Multimodal Access Improvements - Request to defer all phases from FFY 2023 to FFYs 2024-2025 due to a pending grant application approval to fund PE1 (A.10.2).
OC26	Transportation Alternative Program (State)	Request to add the Ala Wai Bridge project to the group listing using TAP funds (A.6.2).
OC26	Transportation Alternative Program (State)	Request to decrease the estimated total project cost from \$22,267,000 to \$22,235,000 (A.8).
OC-22-62	Kakaako Special District Roadway Improvement	Request to decrease the estimated total project cost from \$50,000,000 to \$40,000,000 (A.8).
OC-22-62	Kakaako Special District Roadway Improvement	Request to defer PE1 funds from FFY 2024 to FFY 2025 based on the HDOT planning schedule (A.10.2).
OC-22-62	Kakaako Special District Roadway Improvement	Request to remove \$10M for ROW in FFY 2025 as additional funds will be added in FFYs 2028-2029 (A.10.3).
OC-22-63	Safe Streets and Roads for All (SS4A)	Kailua - Request to decrease PE1 funds in FFY 2024 from \$2.039M to \$1.5M to reflect actual costs (A.8).
OC-22-63	Safe Streets and Roads for All (SS4A)	Phase 1 - Request to remove \$5.8M for PE1 in FFY 2024 to reflect actual costs (A.8).
OC-22-63	Safe Streets and Roads for All (SS4A)	Request to decrease the estimated total project cost from \$101M to \$64.8M (A.8).
OC-22-64	Oahu Electric Vehicle Chargers	Request to decrease the estimated total project cost from \$2,450,000 to \$1,825,000 (A.8).
OC-22-64	Oahu Electric Vehicle Chargers	Request to remove \$625K for CON and \$100K for INSP in FFY 2024 to reflect actual costs (A.8).
OC2	Bikeway Improvements Program	Kailua-Lanikai Bike Path - Request to defer ROW, PE1, and PE2 as planning is still in progress (A.10.2, A.10.3).
OC2	Bikeway Improvements Program	Request to increase the estimated total project cost from \$20,480,000 to \$20,829,000 (A.8).
OC2	Bikeway Improvements Program	Waipahu Depot Shared Use Path - Request to defer and increase funds for PE2 from \$103K in FFY 2024 to \$425K in FFY 2025 as planning is still in progress (A.8, A.10.2).
OC8	Traffic Improvements at Various Locations	Manager's Drive/Hiapo Street Intersection Improvements - Request to defer and increase PE2 funds from \$156K in FFY 2024 to \$400K in FFY 2025 as planning is still in progress (A.8, A.10.2).
OC8	Traffic Improvements at Various Locations	Manager's Drive/Hiapo Street Intersection Improvements - Request to remove \$1.582M for CON and INSP in FFY 2025 as planning is still in progress (A.8).
OC8	Traffic Improvements at Various Locations	Request to decrease the estimated total project cost from \$9,969,000 to \$7,050,000 (A.8).
OC25	Transportation Alternatives Program (MPO)	Ala Wai Bridge Project - Request to defer and decrease CON funds from \$35.841M in FFY 2024 to \$31.25M in FFY 2025 as the design process is still ongoing (A.10.2).
OC25	Transportation Alternatives Program (MPO)	Ala Wai Bridge Project - Request to remove \$5.378M in INSP funds from FFY 2024 as the design process is still ongoing (A.8).
OC25	Transportation Alternatives Program (MPO)	Rail Station Multimodal Access Improvements - Request to defer and increase all phases from FFY 2023 to FFY 2024 due to a pending grant application approval to fund PE 1 (A.8, A.10.2).
OC25	Transportation Alternatives Program (MPO)	Request to decrease the estimated total project cost from \$66,400,000 to \$43,858,000 (A.8).

FTA Funded Projects: Hawaii Department of Transportation

Project #	Project Name	Revision Details
OS50	Transportation Assistance for Seniors and Individuals with Disabilities	Request to add additional funds in FFYs 2024-2027 to account for an annual inflation of 3.5% (A.8).
OS50	Transportation Assistance for Seniors and Individuals with Disabilities	Request to increase the estimated total project cost from \$4,603,000 to \$7,902,000 (A.8).

FTA Funded Projects: City & County of Honolulu

Project #	Project Name	Revision Details
OC13	Bus and Handi-Van Acquisition Program	FFY 2022 - Request to revise EQP funds to reflect projected costs (A.8).
OC13	Bus and Handi-Van Acquisition Program	FFYs 2023-2025 - Request to revise and defer funds for EQP to reflect actual costs and due to the reprioritization of the bus replacement procurement schedule (A.8).
OC13	Bus and Handi-Van Acquisition Program	Request to increase the estimated total project cost from \$383,358,000 to \$433,653,000 (A.8).
OC13	Bus and Handi-Van Acquisition Program	Request to remove \$49K for OPR in FFY 2023 as prior existing funds were used (A.8).
OC16	Honolulu Rail Transit Project	Secure Bicycle Storage - Request to defer \$250K in CON funds from FFY 2024 to FFY 2027 (A.10.3).
OC16	Honolulu Rail Transit Project	Chinatown Bike Facility - Request to defer \$250K in PE2/CON funds from FFY 2024 to FFY 2027 (A.10.3)
OC16	Honolulu Rail Transit Project	Middle Loch Connector - Request to defer and increase CON funds from \$500K in FFY 2023 to \$1M in FFYs 2025-2026 (A.8, A.10.2).
OC16	Honolulu Rail Transit Project	Request to decrease Flex Funds in FFY 2023 (A.8).
OC16	Honolulu Rail Transit Project	Request to defer \$165M in New Starts funds in FFY 2023 to FFY 2024 (A.10.2).
OC-21-59	Intermodal Connectivity - TA Set-Aside (OahuMPO)	Request to decrease the estimated total project cost from \$43,250,000 to \$23,842,000 (A.8).
OC-21-59	Intermodal Connectivity - TA Set-Aside (OahuMPO)	Request to defer PE1 and PE2 funds from FFY 2023 to FFY 2024 (A.10.2).
OC-22-67	Intermodal Connectivity Improvements	Request to remove FFY 2023 funds and revise FFY 2024 funds to reflect actual costs (A.8).
OC-22-68	Electrification of Transportation Infrastructure	Pearl City Bus Facility, Phase 2 - Request to revise CON funds in FFY 2024 to reflect actual costs (A.8).
OC-22-68	Electrification of Transportation Infrastructure	Request to increase the estimated total project cost from \$81,379,000 to \$92,312,000 (A.8).
OC14	Bus Stop ADA Access and Site Improvements	Request to decrease the estimated total project cost from \$9,867,000 to \$8,877,00 (A.8).
OC14	Bus Stop ADA Access and Site Improvements	Request to revise PE2, DES, and CON to reflect actual costs in FFYs 2023-2024 (A.8).
OC24	Capital Training	Request to decrease the estimated total project cost from \$146,000 to \$118,000 (A.8).
OC24	Capital Training	Request to remove \$28K for OPR in FFY 2023 to reflect actual costs (A.8).

PROJECTS

The following projects are grouped by the type of federal funding (e.g., FHWA, FTA) and project sponsor (e.g., HDOT, DTS).

FHWA Funded Projects: Hawaii Department of Transportation

OS4 Farrington Highway (Route 93), Bridge Replacement, Makaha Bridges #3 & #3A



Project Description:

Replace two timber bridges in the vicinity of Makaha Beach Park. For both bridges, the scope includes widening the paved shoulders on the makai side from 3 feet to 10 feet; and, widening the mauka side from 1 foot to 10 feet. This is to accommodate bicyclists and pedestrians.

Mile Post/s: MP 14.20 to MP 14.10

Complete Streets (CS):

Project will implement: Shared-use paths of 10 feet or greater width.

Existing Feature/s: No information available.

ORTP Project #: OS4

Neighborhood(s): Waianae Coast

Estimated Total Project Cost: \$25,200,000

Total Project Cost Notes:

(May include project costs outside of the 4-year TIP and 2 informational years.)

Project Sponsor: State of Hawaii (FHWA Funded)

Agency Responsible for Carrying Out Project/Phase:

Hawaii Department of Transportation

FOR INFORMATION ONLY

Phase	FFY 2022			FFY 2023			FFY 2024			FFY 2025			FFY 2026			FFY 2027			Funding Category
	Total (x\$1000)	Federal (x\$1000)	Local (x\$1000)	Total (x\$1000)	Federal (x\$1000)	Local (x\$1000)	Total (x\$1000)	Federal (x\$1000)	Local (x\$1000)	Total (x\$1000)	Federal (x\$1000)	Local (x\$1000)	Total (x\$1000)	Federal (x\$1000)	Local (x\$1000)	Total (x\$1000)	Federal (x\$1000)	Local (x\$1000)	
ADVCON	0	8,000	-8,000	0	2,000	-2,000	0	1,000	-1,000	0	0	0	0	0	0	0	0	0	NHPP
Total	0	8,000	-8,000	0	2,000	-2,000	0	1,000	-1,000	0	0	0	0	0	0	0	0	0	



Source: Esri, Maxar, GeoEye, Earthstar Geographics, CNES/Airbus DS, USDA, USGS, AeroGRID, IGN, and the GIS User Community, Sources: Esri, HERE, Garmin, FAO, NOAA, USGS, © OpenStreetMap contributors, and the GIS User Community

Project Description:

The project consists of the installation of closed-circuit television (CCTV) cameras, vehicle detectors, cabinets, and communication equipment on the Interstate H-1, H-2, and Moanalua Freeway. Minor interior modifications of the Interstate Route H-3 Control Center will also be done to accommodate system improvements. This project will be implemented in phases.

Mile Post/s:

Queen Liliuokalani Freeway: MP 0.00 to MP 27.16,
Veterans Memorial Freeway: MP 0.00 to MP 8.33, John
A. Burns Freeway: MP 0.00 to MP 15.32

Complete Streets (CS):

Project will implement: No information available.

Existing Feature/s: No information available.

ORTP Project #: OS5

Neighborhood(s): Various Locations

Estimated Total Project Cost: \$200,000,000

Total Project Cost Notes:

(May include project costs outside of the 4-year TIP and 2 informational years.)

Project Sponsor: State of Hawaii (FHWA Funded)

Agency Responsible for Carrying Out Project/Phase:

Hawaii Department of Transportation

FOR INFORMATION ONLY

Phase	FFY 2022			FFY 2023			FFY 2024			FFY 2025			FFY 2026			FFY 2027			Funding Category
	Total (x\$1000)	Federal (x\$1000)	Local (x\$1000)	Total (x\$1000)	Federal (x\$1000)	Local (x\$1000)	Total (x\$1000)	Federal (x\$1000)	Local (x\$1000)	Total (x\$1000)	Federal (x\$1000)	Local (x\$1000)	Total (x\$1000)	Federal (x\$1000)	Local (x\$1000)	Total (x\$1000)	Federal (x\$1000)	Local (x\$1000)	
<i>Phase 3</i>																			
ADVCON	0	2,438	-2,438	0	3,000	-3,000	0	0	0	0	0	0	0	0	0	0	0	0	NHPP
<i>Phase 3, Unit 2</i>																			
CON	0	0	0	0	0	0	12,000	2,600	9,400	0	0	0	0	0	0	0	0	0	NHPP
ADVCON	0	0	0	0	0	0	0	0	0	0	3,000	-3,000	0	5,000	-5,000	0	0	0	NHPP
<i>Phase 3A</i>																			
CON	2,500	1,000	1,500	0	0	0	0	0	0	0	0	0	0	0	0	0	0	0	NHPP
ADVCON	0	0	0	0	1,000	-1,000	0	0	0	0	0	0	0	0	0	0	0	0	NHPP
<i>Phase 4</i>																			
PE2	0	0	0	0	0	0	630	567	63	0	0	0	0	0	0	0	0	0	NHPP
CON	0	0	0	0	0	0	0	0	0	12,000	4,350	7,650	0	0	0	0	0	0	NHPP
ADVCON	0	0	0	0	0	0	0	0	0	0	0	0	0	5,250	-5,250	0	0	0	NHPP
<i>Phase 5</i>																			

OS5 Freeway Management System, Interstate H-1, H-2, and Moanalua Freeway (Routes H-201 and 78)

													FOR INFORMATION ONLY						Funding Category
FFY 2022			FFY 2023			FFY 2024			FFY 2025			FFY 2026			FFY 2027				
	Total	Federal	Local	Total	Federal	Local	Total	Federal	Local	Total	Federal	Local	Total	Federal	Local	Total	Federal	Local	
Phase	(x\$1000)	(x\$1000)	(x\$1000)	(x\$1000)	(x\$1000)	(x\$1000)	(x\$1000)	(x\$1000)	(x\$1000)	(x\$1000)	(x\$1000)	(x\$1000)	(x\$1000)	(x\$1000)	(x\$1000)	(x\$1000)	(x\$1000)	(x\$1000)	
Phase 5																			
PE1	800	720	80	0	0	0	0	0	0	0	0	0	0	0	0	0	0	0	NHPP
PE2	0	0	0	0	0	0	0	0	0	642	578	64	0	0	0	0	0	0	NHPP
CON	0	0	0	0	0	0	0	0	0	0	0	0	10,710	3,213	7,497	0	0	0	NHPP
ADVCON	0	0	0	0	0	0	0	0	0	0	0	0	0	0	0	0	5,250	-5,250	NHPP
Total	3,300	4,158	-858	0	4,000	-4,000	12,630	3,167	9,463	12,642	7,928	4,714	10,710	13,463	-2,753	0	5,250	-5,250	

OS12 Destination Sign, Upgrade/Replacement



Source: Esri, Maxar, GeoEye, Earthstar Geographics, CNES/Airbus DS, USDA, USGS, AeroGRID, IGN, and the GIS User Community

Project Description:

Replace and/or upgrade the existing destination signs and sign support structures on Interstate Routes H-1, H-2, H-201 and Pali Highway.

Mile Post/s: Not applicable

Complete Streets (CS):

Project will implement: No information available.

Existing Feature/s: No information available.

ORTP Project #: OS12

Neighborhood(s): Various Locations

Estimated Total Project Cost: \$46,000,000

Total Project Cost Notes:

(May include project costs outside of the 4-year TIP and 2 informational years.)

Project Sponsor: State of Hawaii (FHWA Funded)

Agency Responsible for Carrying Out Project/Phase:

Hawaii Department of Transportation

													FOR INFORMATION ONLY						Funding Category
FFY 2022			FFY 2023			FFY 2024			FFY 2025			FFY 2026			FFY 2027				
Total	Federal	Local	Total	Federal	Local	Total	Federal	Local	Total	Federal	Local	Total	Federal	Local	Total	Federal	Local		
Phase	(x\$1000)	(x\$1000)	(x\$1000)	(x\$1000)	(x\$1000)	(x\$1000)	(x\$1000)	(x\$1000)	(x\$1000)	(x\$1000)	(x\$1000)	(x\$1000)	(x\$1000)	(x\$1000)	(x\$1000)	(x\$1000)	(x\$1000)	(x\$1000)	
INSP	3,000	2,400	600	0	0	0	0	0	0	0	0	0	0	0	0	0	0	0	NHPP
Phase 3A																			
CON	0	0	0	9,700	2,000	7,700	0	0	0	0	0	0	0	0	0	0	0	0	NHPP
ADVCON	0	0	0	0	0	0	0	2,000	-2,000	0	3,760	-3,760	0	0	0	0	0	0	NHPP
Phase 3B																			
CON	0	0	0	0	0	0	10,500	2,100	8,400	0	0	0	0	0	0	0	0	0	NHPP
ADVCON	0	0	0	0	0	0	0	0	0	0	3,000	-3,000	0	3,300	-3,300	0	0	0	NHPP
Phase 4																			
PE1	0	0	0	572	458	114	0	0	0	0	0	0	0	0	0	0	0	0	NHPP
PE2	0	0	0	0	0	0	832	666	166	0	0	0	0	0	0	0	0	0	NHPP
CON	0	0	0	0	0	0	0	0	0	10,404	4,323	6,081	0	0	0	0	0	0	NHPP
ADVCON	0	0	0	0	0	0	0	0	0	0	0	0	0	4,000	-4,000	0	0	0	NHPP
Phase 5																			
PE1	0	0	0	0	0	0	312	250	62	0	0	0	0	0	0	0	0	0	NHPP
PE2	0	0	0	0	0	0	0	0	0	0	0	0	469	375	94	0	0	0	NHPP
CON	0	0	0	0	0	0	0	0	0	0	0	0	0	0	0	8,160	6,324	1,836	NHPP

OS12 Destination Sign, Upgrade/Replacement

													FOR INFORMATION ONLY						
	FFY 2022			FFY 2023			FFY 2024			FFY 2025			FFY 2026			FFY 2027			
	Total	Federal	Local	Total	Federal	Local	Total	Federal	Local	Total	Federal	Local	Total	Federal	Local	Total	Federal	Local	
Phase	(x\$1000)	(x\$1000)	(x\$1000)	(x\$1000)	(x\$1000)	(x\$1000)	(x\$1000)	(x\$1000)	(x\$1000)	(x\$1000)	(x\$1000)	(x\$1000)	(x\$1000)	(x\$1000)	(x\$1000)	(x\$1000)	(x\$1000)	(x\$1000)	Funding Category
Phase 5																			
ADVCON	0	0	0	0	0	0	0	0	0	0	0	0	0	0	0	0	0	0	NHPP
Phase 6																			
PE1	0	0	0	0	0	0	0	0	0	0	0	0	877	789	88	0	0	0	NHPP
PE2	0	0	0	0	0	0	0	0	0	0	0	0	0	0	0	1,020	918	102	NHPP
CON	0	0	0	0	0	0	0	0	0	0	0	0	0	0	0	0	0	0	NHPP
Total	3,000	2,400	600	10,272	2,458	7,814	11,644	5,016	6,628	10,404	11,083	-679	1,346	8,464	-7,118	9,180	7,242	1,938	

OS20 Interstate Route H-1 Safety Improvements, Beginning of H-1 (Palailai Interchange) to Waiawa Overpass



Source: Esri, Maxar, GeoEye, Earthstar Geographics, CNES/Airbus DS, USDA, USGS, AeroGRID, IGN, and the GIS User Community

Project Description:

Scope includes but is not limited to: Installation of milled rumble strips on shoulders; reconstruction of paved shoulders; pavement markings; and signing.

Mile Post/s: Queen Liliuokalani Freeway: MP 0.00 to MP 9.00

Complete Streets (CS):

Project will implement: Not applicable.

Existing Feature/s: No information available.

ORTP Project #: O-21-15

Neighborhood(s): Waipahu, Ewa, Makakilo-Kapolei-Honokai Hale

Estimated Total Project Cost: \$9,700,000

Total Project Cost Notes:

(May include project costs outside of the 4-year TIP and 2 informational years.)

Project Sponsor: State of Hawaii (FHWA Funded)

Agency Responsible for Carrying Out Project/Phase:

Hawaii Department of Transportation

FOR INFORMATION ONLY

Phase	FFY 2022			FFY 2023			FFY 2024			FFY 2025			FFY 2026			FFY 2027			Funding Category	
	Total	Federal	Local	Total	Federal	Local	Total	Federal	Local	Total	Federal	Local	Total	Federal	Local	Total	Federal	Local		
	(x\$1000)	(x\$1000)	(x\$1000)	(x\$1000)	(x\$1000)	(x\$1000)	(x\$1000)	(x\$1000)	(x\$1000)	(x\$1000)	(x\$1000)	(x\$1000)	(x\$1000)	(x\$1000)	(x\$1000)	(x\$1000)	(x\$1000)	(x\$1000)		
ADVCON	0	4,107	-4,107	0	0	0	0	1,000	-1,000	0	0	0	0	0	0	0	0	0	0	HSIP
Total	0	4,107	-4,107	0	0	0	0	1,000	-1,000	0	0	0	0	0	0	0	0	0	0	

OS26 Kalanianaʻole Highway (Route 72) Resurfacing, Poalima Street to Vicinity of Makai Pier



Source: Esri, Maxar, GeoEye, Earthstar Geographics, CNES/Airbus DS, USDA, USGS, AeroGRID, IGN, and the GIS User Community, Sources: Esri, HERE, Garmin, FAO, NOAA, USGS, © OpenStreetMap contributors, and the GIS User Community

Project Description:

Roadway resurfacing of Kalanianaʻole Highway from Poalima Street to Vicinity of Makai Pier.

Mile Post/s: MP 3.35 to MP 5.65

Complete Streets (CS):

Project will implement: No information available.

Existing Feature/s: No information available.

ORTP Project #: OS26

Neighborhood(s): Waimanalo

Estimated Total Project Cost: \$22,500,000

Total Project Cost Notes:

(May include project costs outside of the 4-year TIP and 2 informational years.)

Project Sponsor: State of Hawaii (FHWA Funded)

Agency Responsible for Carrying Out Project/Phase:

Hawaii Department of Transportation

FOR INFORMATION ONLY

Phase	FFY 2022			FFY 2023			FFY 2024			FFY 2025			FFY 2026			FFY 2027			Funding Category
	Total (x\$1000)	Federal (x\$1000)	Local (x\$1000)	Total (x\$1000)	Federal (x\$1000)	Local (x\$1000)	Total (x\$1000)	Federal (x\$1000)	Local (x\$1000)	Total (x\$1000)	Federal (x\$1000)	Local (x\$1000)	Total (x\$1000)	Federal (x\$1000)	Local (x\$1000)	Total (x\$1000)	Federal (x\$1000)	Local (x\$1000)	
ADVCON	0	3,000	-3,000	0	3,000	-3,000	0	0	0	0	0	0	0	0	0	0	0	0	NHPP
Total	0	3,000	-3,000	0	3,000	-3,000	0	0	0	0	0	0	0	0	0	0	0	0	

OS31 Kamehameha Highway (Route 83), Bridge Replacement, Laieloa Stream Bridge



Source: Esri, Maxar, GeoEye, Earthstar Geographics, CNES/Airbus DS, USDA, USGS, AeroGRID, IGN, and the GIS User Community, Sources: Esri, HERE, Garmin, FAO, NOAA, USGS, © OpenStreetMap contributors, and the GIS User Community

Project Description:

Replace the existing concrete slab bridge on Kamehameha Highway in the vicinity of Laie.

Mile Post/s: Kamehameha Highway: MP 18.31

Complete Streets (CS):

Project will implement: No information available.

Existing Feature/s: No information available.

ORTP Project #: OS31

Neighborhood(s): Koolauloa

Estimated Total Project Cost: \$17,000,000

Total Project Cost Notes:

(May include project costs outside of the 4-year TIP and 2 informational years.)

Project Sponsor: State of Hawaii (FHWA Funded)

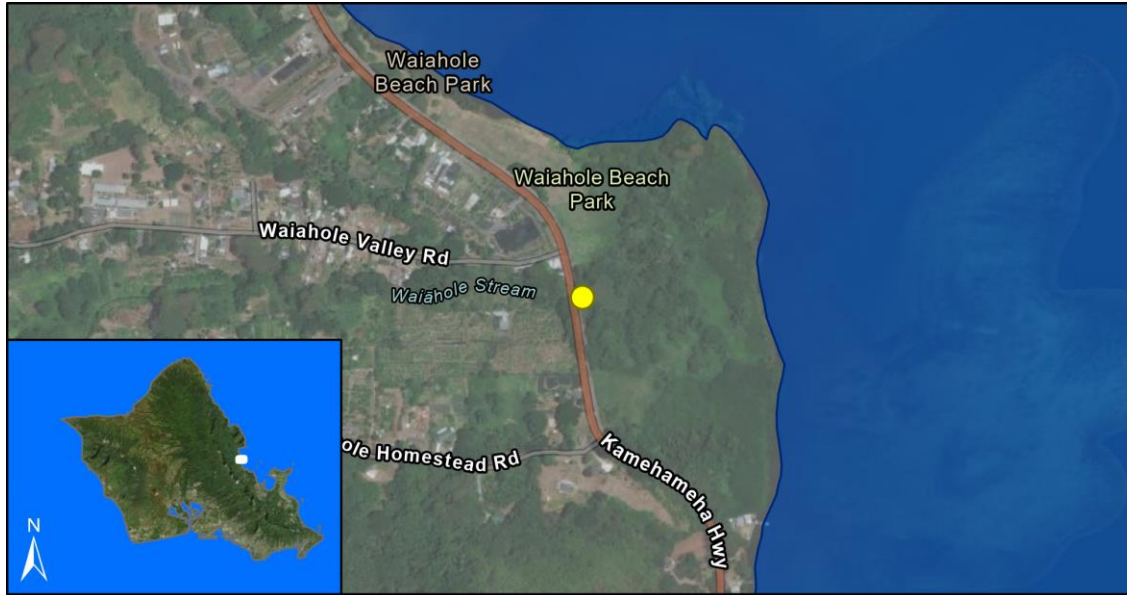
Agency Responsible for Carrying Out Project/Phase:

Hawaii Department of Transportation

FOR INFORMATION ONLY

Phase	FFY 2022			FFY 2023			FFY 2024			FFY 2025			FFY 2026			FFY 2027			Funding Category
	Total (x\$1000)	Federal (x\$1000)	Local (x\$1000)	Total (x\$1000)	Federal (x\$1000)	Local (x\$1000)	Total (x\$1000)	Federal (x\$1000)	Local (x\$1000)	Total (x\$1000)	Federal (x\$1000)	Local (x\$1000)	Total (x\$1000)	Federal (x\$1000)	Local (x\$1000)	Total (x\$1000)	Federal (x\$1000)	Local (x\$1000)	
ROW	0	0	0	735	588	147	0	0	0	0	0	0	0	0	0	0	0	0	NHPP
CON	0	0	0	14,280	1,124	13,156	0	0	0	0	0	0	0	0	0	0	0	0	NHPP
ADVCON	0	0	0	0	0	0	0	2,300	-2,300	0	2,000	-2,000	0	4,000	-4,000	0	0	0	NHPP
Total	0	0	0	15,015	1,712	13,303	0	2,300	-2,300	0	2,000	-2,000	0	4,000	-4,000	0	0	0	

OS34 Kamehameha Highway (Route 83), Bridge Replacement, Waiahole Stream Bridge



Source: Esri, Maxar, GeoEye, Earthstar Geographics, CNES/Airbus DS, USDA, USGS, AeroGRID, IGN, and the GIS User Community, Sources: Esri, HERE, Garmin, FAO, NOAA, USGS, © OpenStreetMap contributors, and the GIS User Community

Project Description:

Replace the existing bridge.

Mile Post/s: Kamehameha Highway: MP 34.31 to MP 34.51

Complete Streets (CS):

Project will implement: Bicycle and pedestrian facilities will be included when feasible.

Existing Feature/s: No information available.

ORTP Project #: OS34

Neighborhood(s): Kahaluu

Estimated Total Project Cost: \$17,465,000

Total Project Cost Notes:

(May include project costs outside of the 4-year TIP and 2 informational years.)

Project Sponsor: State of Hawaii (FHWA Funded)

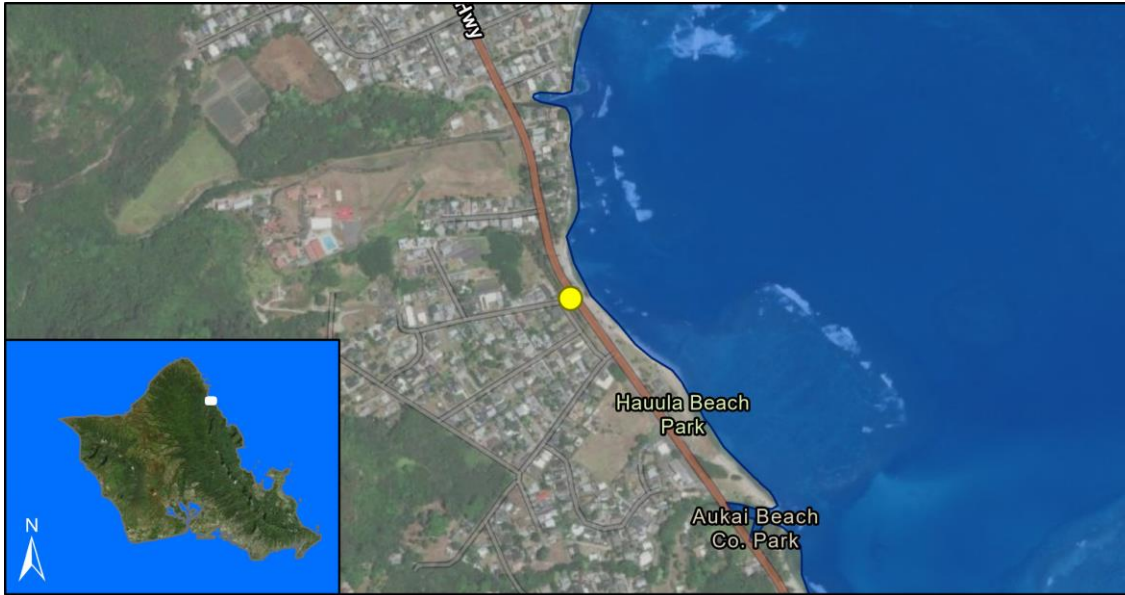
Agency Responsible for Carrying Out Project/Phase:

Hawaii Department of Transportation

FOR INFORMATION ONLY

Phase	FFY 2022			FFY 2023			FFY 2024			FFY 2025			FFY 2026			FFY 2027			Funding Category
	Total (x\$1000)	Federal (x\$1000)	Local (x\$1000)	Total (x\$1000)	Federal (x\$1000)	Local (x\$1000)	Total (x\$1000)	Federal (x\$1000)	Local (x\$1000)	Total (x\$1000)	Federal (x\$1000)	Local (x\$1000)	Total (x\$1000)	Federal (x\$1000)	Local (x\$1000)	Total (x\$1000)	Federal (x\$1000)	Local (x\$1000)	
ROW	0	0	0	0	0	0	643	514	129	0	0	0	0	0	0	0	0	0	NHPP
PE2/CON	0	0	0	0	0	0	16,601	3,281	13,320	0	0	0	0	0	0	0	0	0	NHPP
ADVCON	0	0	0	0	0	0	0	0	0	0	5,000	-5,000	0	5,000	-5,000	0	0	0	NHPP
Total	0	0	0	0	0	0	17,244	3,795	13,449	0	5,000	-5,000	0	5,000	-5,000	0	0	0	

OS36 Kamehameha Highway (Route 83), Bridge Replacement, Waipilopilo Stream Bridge



Source: Esri, Maxar, GeoEye, Earthstar Geographics, CNES/Airbus DS, USDA, USGS, AeroGRID, IGN, and the GIS User Community, Sources: Esri, HERE, Garmin, FAO, NOAA, USGS, © OpenStreetMap contributors, and the GIS User Community

Project Description:

Replace the existing concrete T-bridge on Kamehameha Highway in the vicinity of Hauula.

Mile Post/s: Kamehameha Highway: MP 21.12

Complete Streets (CS):

Project will implement: No information available.

Existing Feature/s: No information available.

ORTP Project #: OS36

Neighborhood(s): Koolauloa

Estimated Total Project Cost: \$12,550,000

Total Project Cost Notes:

(May include project costs outside of the 4-year TIP and 2 informational years.)

Project Sponsor: State of Hawaii (FHWA Funded)

Agency Responsible for Carrying Out Project/Phase:

Hawaii Department of Transportation

FOR INFORMATION ONLY

Phase	FFY 2022			FFY 2023			FFY 2024			FFY 2025			FFY 2026			FFY 2027			Funding Category
	Total (x\$1000)	Federal (x\$1000)	Local (x\$1000)	Total (x\$1000)	Federal (x\$1000)	Local (x\$1000)	Total (x\$1000)	Federal (x\$1000)	Local (x\$1000)	Total (x\$1000)	Federal (x\$1000)	Local (x\$1000)	Total (x\$1000)	Federal (x\$1000)	Local (x\$1000)	Total (x\$1000)	Federal (x\$1000)	Local (x\$1000)	
PE2	0	0	0	0	0	0	1,000	800	200	0	0	0	0	0	0	0	0	0	NHPP
ROW	0	0	0	0	0	0	1,050	840	210	0	0	0	0	0	0	0	0	0	NHPP
CON	0	0	0	0	0	0	10,500	400	10,100	0	0	0	0	0	0	0	0	0	NHPP
ADVCON	0	0	0	0	0	0	0	0	0	0	6,000	-6,000	0	2,000	-2,000	0	0	0	NHPP
Total	0	0	0	0	0	0	12,550	2,040	10,510	0	6,000	-6,000	0	2,000	-2,000	0	0	0	

OS45 Moanalua Freeway (route H-201), Highway Lighting Improvements, Halawa Heights Off-Ramp to Middle Street Overpass



Source: Esri, Maxar, GeoEye, Earthstar Geographics, CNES/Airbus DS, USDA, USGS, AeroGRID, IGN, and the GIS User Community, Sources: Esri, HERE, Garmin, FAO, NOAA, USGS, © OpenStreetMap contributors, and the GIS User Community

Project Description:

Upgrade/replace existing freeway lighting on Moanalua Freeway, from the Halawa Heights westbound off-ramp (milepost 1.12) to the Moanalua/H-1 Freeway merge at Middle Street (milepost 4.09).

Mile Post/s: Moanalua Freeway: MP 1.12 to MP 4.09

Complete Streets (CS):

Project will implement: Not applicable.

Existing Feature/s: Not applicable.

ORTP Project #: OS45

Neighborhood(s): Various Locations

Estimated Total Project Cost: \$22,000,000

Total Project Cost Notes:

(May include project costs outside of the 4-year TIP and 2 informational years.)

Project Sponsor: State of Hawaii (FHWA Funded)

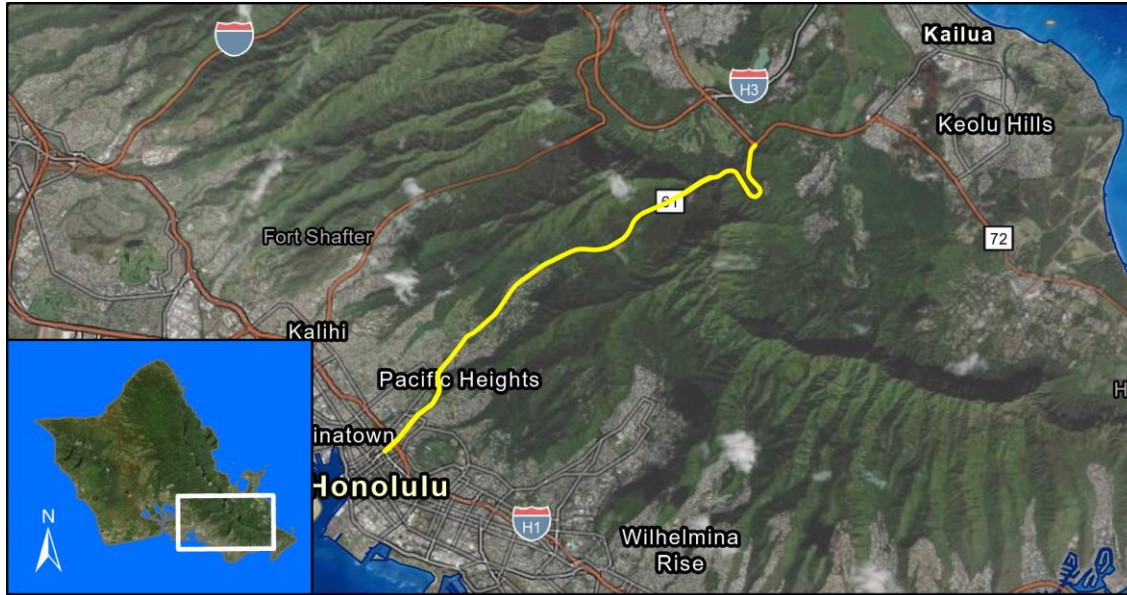
Agency Responsible for Carrying Out Project/Phase:

Hawaii Department of Transportation

FOR INFORMATION ONLY

Phase	FFY 2022			FFY 2023			FFY 2024			FFY 2025			FFY 2026			FFY 2027			Funding Category
	Total (x\$1000)	Federal (x\$1000)	Local (x\$1000)	Total (x\$1000)	Federal (x\$1000)	Local (x\$1000)	Total (x\$1000)	Federal (x\$1000)	Local (x\$1000)	Total (x\$1000)	Federal (x\$1000)	Local (x\$1000)	Total (x\$1000)	Federal (x\$1000)	Local (x\$1000)	Total (x\$1000)	Federal (x\$1000)	Local (x\$1000)	
Phase 2																			
ADVCON	0	7,000	-7,000	0	3,000	-3,000	0	2,000	-2,000	0	0	0	0	0	0	0	0	0	NHPP
Total	0	7,000	-7,000	0	3,000	-3,000	0	2,000	-2,000	0	0	0	0	0	0	0	0	0	

OS62 Pali Hwy (Rte 61) Resurfacing & Lighting Improvements, Vineyard Blvd (Rte 98) to Kamehameha Hwy (Rte 83)



Source: Esri, Maxar, GeoEye, Earthstar Geographics, CNES/Airbus DS, USDA, USGS, AeroGRID, IGN, and the GIS User Community, Sources: Esri, HERE, Garmin, FAO, NOAA, USGS, © OpenStreetMap contributors, and the GIS User Community

Project Description:

Scope of work includes but is not limited to cold planning, resurfacing, reconstruction of weakened pavement, installation of new highway lighting, construction of concrete median barriers, replacement of guardrails in-kind and end treatments, installation of new guardrails, installing bridge rails, and installation of signs and pavement markings.

Mile Post/s:

Complete Streets (CS):

Project will implement: No information available.

Existing Feature/s: No information available.

ORTP Project #: OS62

Neighborhood(s): Nuuanu-Punchbowl

Estimated Total Project Cost: \$119,500,000

Total Project Cost Notes:

(May include project costs outside of the 4-year TIP and 2 informational years.)

Project Sponsor: State of Hawaii (FHWA Funded)

Agency Responsible for Carrying Out Project/Phase:

Hawaii Department of Transportation

FOR INFORMATION ONLY

Phase	FFY 2022			FFY 2023			FFY 2024			FFY 2025			FFY 2026			FFY 2027			Funding Category
	Total (x\$1000)	Federal (x\$1000)	Local (x\$1000)	Total (x\$1000)	Federal (x\$1000)	Local (x\$1000)	Total (x\$1000)	Federal (x\$1000)	Local (x\$1000)	Total (x\$1000)	Federal (x\$1000)	Local (x\$1000)	Total (x\$1000)	Federal (x\$1000)	Local (x\$1000)	Total (x\$1000)	Federal (x\$1000)	Local (x\$1000)	
Phase 1 - Lighting Vineyard Blvd to Kamehameha Hwy & Resurf. Waokanaka St. to Kamehameha Hwy																			
ADVCON	0	2,150	-2,150	0	0	0	0	0	0	0	0	0	0	0	0	0	0	0	NHPP
Phase 2 - Resurfacing, Vineyard Blvd to Waokanaka St																			
ADVCON	0	7,000	-7,000	0	3,000	-3,000	0	4,000	-4,000	0	0	0	0	0	0	0	0	0	NHPP
Total	0	9,150	-9,150	0	3,000	-3,000	0	4,000	-4,000	0	0	0	0	0	0	0	0	0	

OS70 Interstate Route H-1, Seismic Retrofit, Waialae Viaduct



Source: Esri, Maxar, GeoEye, Earthstar Geographics, CNES/Airbus DS, USDA, USGS, AeroGRID, IGN, and the GIS User Community, Sources: Esri, HERE, Garmin, FAO, NOAA, USGS, © OpenStreetMap contributors, and the GIS User Community

Project Description:

Retrofit interchange structures to meet current seismic standards.

Mile Post/s: MP 26.50 to MP 26.90

Complete Streets (CS):

Project will implement: Not applicable.

Existing Feature/s: Not applicable.

ORTP Project #: OS70

Neighborhood(s): Waialae-Kahala, Kaimuki

Estimated Total Project Cost: \$7,764,000

Total Project Cost Notes:

(May include project costs outside of the 4-year TIP and 2 informational years.)

Project Sponsor: State of Hawaii (FHWA Funded)

Agency Responsible for Carrying Out Project/Phase:

Hawaii Department of Transportation

FOR INFORMATION ONLY

Phase	FFY 2022			FFY 2023			FFY 2024			FFY 2025			FFY 2026			FFY 2027			Funding Category
	Total (x\$1000)	Federal (x\$1000)	Local (x\$1000)	Total (x\$1000)	Federal (x\$1000)	Local (x\$1000)	Total (x\$1000)	Federal (x\$1000)	Local (x\$1000)	Total (x\$1000)	Federal (x\$1000)	Local (x\$1000)	Total (x\$1000)	Federal (x\$1000)	Local (x\$1000)	Total (x\$1000)	Federal (x\$1000)	Local (x\$1000)	
PE2	0	0	0	0	0	0	261	209	52	0	0	0	0	0	0	0	0	0	NHPP
CON	0	0	0	0	0	0	4,000	200	3,800	0	0	0	0	0	0	0	0	0	NHPP
ADVCON	0	0	0	0	0	0	0	0	0	0	3,000	-3,000	0	0	0	0	0	0	NHPP
Total	0	0	0	0	0	0	4,261	409	3,852	0	3,000	-3,000	0	0	0	0	0	0	

OS75 Kamehameha Highway (Route 83), Rockfall Protection, Waimea Bay



Resource Mapping Hawaii, Maxar, Esri, HERE, Garmin, SafeGraph, METI/NASA, USGS, EPA, US Census Bureau, USDA, Earthstar Geographics, Esri, HERE, Garmin, FAO, NOAA, USGS, EPA

Project Description:

Initiate rockfall mitigation measures along Kamehameha Highway at Waimea Bay (milepost 5.4 to milepost 6.2).

Mile Post/s: MP 5.4 to MP 6.2

Complete Streets (CS):

Project will implement: No information available.

Existing Feature/s: No information available.

ORTP Project #: OS75

Neighborhood(s): North Shore

Estimated Total Project Cost: \$35,450,000

Total Project Cost Notes:

(May include project costs outside of the 4-year TIP and 2 informational years.)

Project Sponsor: State of Hawaii (FHWA Funded)

Agency Responsible for Carrying Out Project/Phase:

Hawaii Department of Transportation

FOR INFORMATION ONLY

Phase	FFY 2022			FFY 2023			FFY 2024			FFY 2025			FFY 2026			FFY 2027			Funding Category
	Total (x\$1000)	Federal (x\$1000)	Local (x\$1000)	Total (x\$1000)	Federal (x\$1000)	Local (x\$1000)	Total (x\$1000)	Federal (x\$1000)	Local (x\$1000)	Total (x\$1000)	Federal (x\$1000)	Local (x\$1000)	Total (x\$1000)	Federal (x\$1000)	Local (x\$1000)	Total (x\$1000)	Federal (x\$1000)	Local (x\$1000)	
Haleiwa																			
PE2	0	0	0	0	0	0	0	0	0	900	720	180	0	0	0	0	0	0	NHPP
CON	0	0	0	0	0	0	0	0	0	0	0	0	15,000	6,600	8,400	0	0	0	NHPP
ADVCON	0	0	0	0	0	0	0	0	0	0	0	0	0	0	0	0	5,400	-5,400	NHPP
Sunset Beach																			
PE1	0	0	0	750	600	150	0	0	0	0	0	0	0	0	0	0	0	0	NHPP
CON	0	0	0	0	0	0	8,000	3,400	4,600	0	0	0	0	0	0	0	0	0	NHPP
ADVCON	0	0	0	0	0	0	0	0	0	0	3,000	-3,000	0	0	0	0	0	0	NHPP
Waimea Bay																			
ROW	0	0	0	0	0	0	0	0	0	563	450	113	0	0	0	0	0	0	NHPP
Total	0	0	0	750	600	150	8,000	3,400	4,600	1,463	4,170	-2,707	15,000	6,600	8,400	0	5,400	-5,400	



Source: Esri, Maxar, GeoEye, Earthstar Geographics, CNES/Airbus DS, USDA, USGS, AeroGRID, IGN, and the GIS User Community

Project Description:

Develop and construct shoreline protection measures to better protect roadways from flooding and erosion as identified and prioritized in the Statewide Shoreline Protection Program. This funding is for the Oahu District Sub-Program.

Mile Post/s: Not applicable

Complete Streets (CS):

Project will implement: Not applicable.

Existing Feature/s: Not applicable.

ORTP Project #: OS79

Neighborhood(s): Various Locations

Estimated Total Project Cost: \$70,000,000

Total Project Cost Notes:

(May include project costs outside of the 4-year TIP and 2 informational years.)

Project Sponsor: State of Hawaii (FHWA Funded)

Agency Responsible for Carrying Out Project/Phase:

Hawaii Department of Transportation

													FOR INFORMATION ONLY						
Phase	FFY 2022			FFY 2023			FFY 2024			FFY 2025			FFY 2026			FFY 2027			Funding Category
	Total	Federal	Local	Total	Federal	Local	Total	Federal	Local	Total	Federal	Local	Total	Federal	Local	Total	Federal	Local	
	(x\$1000)	(x\$1000)	(x\$1000)	(x\$1000)	(x\$1000)	(x\$1000)	(x\$1000)	(x\$1000)	(x\$1000)	(x\$1000)	(x\$1000)	(x\$1000)	(x\$1000)	(x\$1000)	(x\$1000)	(x\$1000)	(x\$1000)	(x\$1000)	
Priority 1 (Immediate/Short-Term) - Kamehameha Hwy, Experimental Sandsaver Installation - Kualoa																			
CON	0	0	0	0	0	0	1,000	800	200	0	0	0	0	0	0	0	0	0	NHPP
Priority 1 (Immediate/Short-Term) - Kamehameha Hwy, Shoreline Mitigation - Kaaawa Elementary																			
CON	0	0	0	0	0	0	3,150	2,520	630	0	0	0	0	0	0	0	0	0	NHPP
Priority 1, Phase 1 - Kamehameha Hwy, Shoreline Mitigation - Kualoa, Kaaawa, Punaluu, Hauula (KKPH)																			
PE2	0	0	0	0	0	0	0	0	0	1,500	1,200	300	0	0	0	0	0	0	NHPP
ROW	0	0	0	0	0	0	0	0	0	200	160	40	0	0	0	0	0	0	NHPP
CON	0	0	0	0	0	0	0	0	0	0	0	0	0	0	0	30,000	6,800	23,200	NHPP
ADVCON	0	0	0	0	0	0	0	0	0	0	0	0	0	0	0	0	0	0	NHPP
Priority 1, Phase 2 - Kamehameha Hwy, Shoreline Mitigation - Kualoa, Kaaawa, Punaluu, Hauula (KKPH)																			
PE2	0	0	0	0	0	0	0	0	0	0	0	0	1,500	1,200	300	0	0	0	NHPP
ROW	0	0	0	0	0	0	0	0	0	0	0	0	550	440	110	0	0	0	NHPP
CON	0	0	0	0	0	0	0	0	0	0	0	0	0	0	0	0	0	0	NHPP
ADVCON	0	0	0	0	0	0	0	0	0	0	0	0	0	0	0	0	0	0	NHPP
Priority 2 (Mid/Long-Term) - Farrington Hwy, Coastal Hwy Mitigation - Keaau Stream Bridge																			

OS79 Shoreline Protection/Mitigation Program

													FOR INFORMATION ONLY						Funding Category	
FFY 2022			FFY 2023			FFY 2024			FFY 2025			FFY 2026			FFY 2027					
	Total	Federal	Local	Total	Federal	Local	Total	Federal	Local	Total	Federal	Local	Total	Federal	Local	Total	Federal	Local		
Phase	(x\$1000)	(x\$1000)	(x\$1000)	(x\$1000)	(x\$1000)	(x\$1000)	(x\$1000)	(x\$1000)	(x\$1000)	(x\$1000)	(x\$1000)	(x\$1000)	(x\$1000)	(x\$1000)	(x\$1000)	(x\$1000)	(x\$1000)	(x\$1000)		
Priority 2 (Mid/Long-Term) - Farrington Hwy, Coastal Hwy Mitigation - Keaau Stream Bridge																				
PE1	0	0	0	0	0	0	0	0	0	0	0	0	0	600	480	120	0	0	0	NHPP
PE2	0	0	0	0	0	0	0	0	0	0	0	0	0	0	0	0	0	0	0	NHPP
ROW	0	0	0	0	0	0	0	0	0	0	0	0	0	0	0	0	0	0	0	NHPP
Priority 2 (Mid/Long-Term) - Kalanianaʻole Hwy, Coastal Hwy Mitigation - Kaupo Cave																				
PE1	0	0	0	0	0	0	0	0	0	0	0	0	0	0	0	0	0	0	0	NHPP
Total	0	0	0	0	0	0	4,150	3,320	830	1,700	1,360	340	2,650	2,120	530	30,000	6,800	23,200		

OS-21-45 Pali Highway, Rockfall Mitigation, Vicinity of MP 5.9 to MP 6.55



Source: Esri, Maxar, GeoEye, Earthstar Geographics, CNES/Airbus DS, USDA, USGS, AeroGRID, IGN, and the GIS User Community, Sources: Esri, HERE, Garmin, FAO, NOAA, USGS, © OpenStreetMap contributors, and the GIS User Community

Project Description:

Mitigate past rockfall events and prevent future damage to the roadway infrastructure.

Mile Post/s: MP 5.9 to 6.55

Complete Streets (CS):

Project will implement: Not applicable.

Existing Feature/s: Not applicable.

ORTP Project #: O-21-45

Neighborhood(s): Kaneohe, Kailua

Estimated Total Project Cost: \$18,000,000

Total Project Cost Notes:

(May include project costs outside of the 4-year TIP and 2 informational years.)

Project Sponsor: State of Hawaii (FHWA Funded)

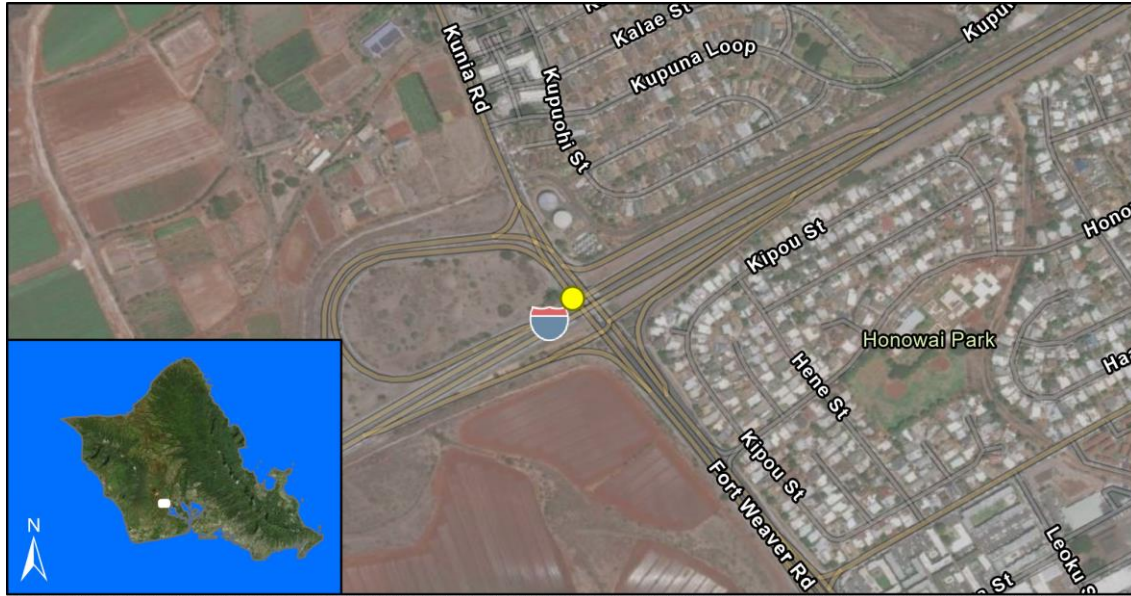
Agency Responsible for Carrying Out Project/Phase:

Hawaii Department of Transportation

FOR INFORMATION ONLY

Phase	FFY 2022			FFY 2023			FFY 2024			FFY 2025			FFY 2026			FFY 2027			Funding Category
	Total (x\$1000)	Federal (x\$1000)	Local (x\$1000)	Total (x\$1000)	Federal (x\$1000)	Local (x\$1000)	Total (x\$1000)	Federal (x\$1000)	Local (x\$1000)	Total (x\$1000)	Federal (x\$1000)	Local (x\$1000)	Total (x\$1000)	Federal (x\$1000)	Local (x\$1000)	Total (x\$1000)	Federal (x\$1000)	Local (x\$1000)	
PE1	0	0	0	0	0	0	0	0	0	1,000	800	200	0	0	0	0	0	0	NHPP
PE2	0	0	0	0	0	0	0	0	0	0	0	0	0	0	0	800	640	160	NHPP
ROW	0	0	0	0	0	0	0	0	0	0	0	0	0	0	0	100	80	20	NHPP
CON	0	0	0	0	0	0	0	0	0	0	0	0	0	0	0	0	0	0	NHPP
Total	0	0	0	0	0	0	0	0	0	1,000	800	200	0	0	0	900	720	180	

OS-21-46 Interstate Route H-1, Kunia Interchange Improvements



Source: Esri, Maxar, GeoEye, Earthstar Geographics, CNES/Airbus DS, USDA, USGS, AeroGRID, IGN, and the GIS User Community, Sources: Esri, HERE, Garmin, FAO, NOAA, USGS, © OpenStreetMap contributors, and the GIS User Community

Project Description:

Improve capacity and congestion at Kunia Interchange due to the following issues: 1. Bottlenecks at high volume ramps due to merging or diverging of traffic from the mainline to/from the interchange ramp; and 2. A heavy mauka bound right turn movement to the eastbound H-1 on-ramp, as well as a heavy makai bound left-turn movement to the H-1 eastbound on-ramp. Improvements could include widening Ft. Weaver Road between S. Kapuna Loop and Farrington Highway and/or adding/adjusting ramps in the Kunia IC.

Mile Post/s: MP 5.0 - 6.0 (Route H1) and MP 6.0-6.5 (Route 76)

Complete Streets (CS):

Project will implement: There will be separate facilities for pedestrians and bicyclist traveling on the Kunia Road segment of the interchange.

Existing Feature/s: No information available.

ORTP Project #: O-21-46

Neighborhood(s): Waipahu, Ewa

Estimated Total Project Cost: \$160,000,000

Total Project Cost Notes:

(May include project costs outside of the 4-year TIP and 2 informational years.)

Project Sponsor: State of Hawaii (FHWA Funded)

Agency Responsible for Carrying Out Project/Phase:

Hawaii Department of Transportation

FOR INFORMATION ONLY

Phase	FFY 2022			FFY 2023			FFY 2024			FFY 2025			FFY 2026			FFY 2027			Funding Category
	Total (x\$1000)	Federal (x\$1000)	Local (x\$1000)	Total (x\$1000)	Federal (x\$1000)	Local (x\$1000)	Total (x\$1000)	Federal (x\$1000)	Local (x\$1000)	Total (x\$1000)	Federal (x\$1000)	Local (x\$1000)	Total (x\$1000)	Federal (x\$1000)	Local (x\$1000)	Total (x\$1000)	Federal (x\$1000)	Local (x\$1000)	
PE1	1,500	0	1,500	0	0	0	0	0	0	0	0	0	0	0	0	0	0	0	Local
PE2	0	0	0	0	0	0	0	0	0	0	0	0	0	0	0	0	0	0	Local
Total	1,500	0	1,500	0	0	0	0	0	0	0	0	0	0	0	0	0	0	0	

SITES TO BE
DETERMINED

Project Description:

Provide mitigation to help restore Halawa Valley to pre H-3 conditions as much as reasonably possible.

Mile Post/s:

Complete Streets (CS):

Project will implement: Not applicable.

Existing Feature/s: Not applicable.

ORTP Project #: O-21-50

Neighborhood(s): Aiea

Estimated Total Project Cost: \$5,500,000

Total Project Cost Notes:

(May include project costs outside of the 4-year TIP and 2 informational years.)

Project Sponsor: State of Hawaii (FHWA Funded)

Agency Responsible for Carrying Out Project/Phase:

Hawaii Department of Transportation

Phase	FFY 2022			FFY 2023			FFY 2024			FFY 2025			FOR INFORMATION ONLY						Funding Category
	Total	Federal	Local	Total	Federal	Local	Total	Federal	Local	Total	Federal	Local	FFY 2026			FFY 2027			
	(x\$1000)	(x\$1000)	(x\$1000)	(x\$1000)	(x\$1000)	(x\$1000)	(x\$1000)	(x\$1000)	(x\$1000)	(x\$1000)	(x\$1000)	(x\$1000)	(x\$1000)	(x\$1000)	(x\$1000)	(x\$1000)	(x\$1000)	(x\$1000)	
CON	0	0	0	0	0	0	0	0	0	5,200	2,160	3,040	0	0	0	0	0	0	NHPP
ADVCON	0	0	0	0	0	0	0	0	0	0	0	0	0	2,000	-2,000	0	0	0	NHPP
Total	0	0	0	0	0	0	0	0	0	5,200	2,160	3,040	0	2,000	-2,000	0	0	0	

OS-21-56 Interstate Route H-3, Halawa Valley Mitigation, Phase 2, Native Species Area to Tunnel Portal

**SITES TO BE
DETERMINED**

Project Description:

Provide mitigation to help restore Halawa Valley to pre H-3 conditions as much as reasonably possible.

Mile Post/s:

Complete Streets (CS):

Project will implement: Not applicable.

Existing Feature/s: Not applicable.

ORTP Project #: O-21-56

Neighborhood(s): Aiea

Estimated Total Project Cost: \$5,500,000

Total Project Cost Notes:

(May include project costs outside of the 4-year TIP and 2 informational years.)

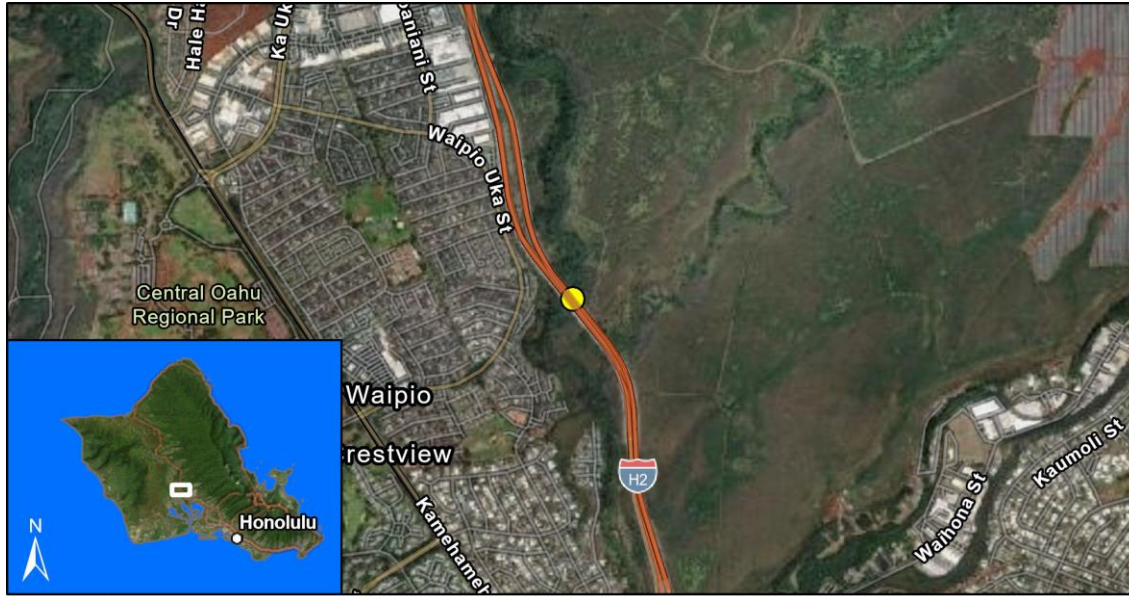
Project Sponsor: State of Hawaii (FHWA Funded)

Agency Responsible for Carrying Out Project/Phase:

Hawaii Department of Transportation

Phase	FFY 2022			FFY 2023			FFY 2024			FFY 2025			FOR INFORMATION ONLY						Funding Category
	Total	Federal	Local	Total	Federal	Local	Total	Federal	Local	Total	Federal	Local	FFY 2026			FFY 2027			
	(x\$1000)	(x\$1000)	(x\$1000)	(x\$1000)	(x\$1000)	(x\$1000)	(x\$1000)	(x\$1000)	(x\$1000)	(x\$1000)	(x\$1000)	(x\$1000)	(x\$1000)	(x\$1000)	(x\$1000)	(x\$1000)	(x\$1000)		
CON	0	0	0	0	0	0	0	0	0	5,100	2,080	3,020	0	0	0	0	0	0	NHPP
ADVCON	0	0	0	0	0	0	0	0	0	0	0	0	0	2,000	-2,000	0	0	0	NHPP
Total	0	0	0	0	0	0	0	0	0	5,100	2,080	3,020	0	2,000	-2,000	0	0	0	

OS-23-66 Interstate Route H-2, Panakauchi 3-144 and 4-144 Culvert Rehabilitation



Resource Mapping Hawaii, Maxar, Esri, HERE, Garmin, SafeGraph, METI/NASA, USGS, EPA, US Census Bureau, USDA, Earthstar Geographics, Esri, HERE, Garmin, FAO, NOAA, USGS, EPA

Project Description:

Rehabilitation of 3 144" and 4 144" culverts under H2.

Mile Post/s:

Complete Streets (CS):

Project will implement: Not applicable.

Existing Feature/s: Not applicable.

ORTP Project #: O-21-14

Neighborhood(s): Waipahu

Estimated Total Project Cost: \$17,000,000

Total Project Cost Notes:

(May include project costs outside of the 4-year TIP and 2 informational years.)

Project Sponsor: State of Hawaii (FHWA Funded)

Agency Responsible for Carrying Out Project/Phase:

Hawaii Department of Transportation

FOR INFORMATION ONLY

Phase	FFY 2022			FFY 2023			FFY 2024			FFY 2025			FFY 2026			FFY 2027			Funding Category
	Total (x\$1000)	Federal (x\$1000)	Local (x\$1000)	Total (x\$1000)	Federal (x\$1000)	Local (x\$1000)	Total (x\$1000)	Federal (x\$1000)	Local (x\$1000)	Total (x\$1000)	Federal (x\$1000)	Local (x\$1000)	Total (x\$1000)	Federal (x\$1000)	Local (x\$1000)	Total (x\$1000)	Federal (x\$1000)	Local (x\$1000)	
CON	0	0	0	0	0	0	16,000	800	15,200	0	0	0	0	0	0	0	0	0	HIP-BFP
ADVCON	0	0	0	0	0	0	0	0	0	0	3,000	-3,000	0	6,000	-6,000	0	3,000	-3,000	HIP-BFP
Total	0	0	0	0	0	0	16,000	800	15,200	0	3,000	-3,000	0	6,000	-6,000	0	3,000	-3,000	

OS-23-70 Likelike Highway (Rte 63), Tunnel Rehabilitation, Wilson Tunnels



Resource Mapping Hawaii, Maxar, Earthstar Geographics, Esri, HERE, Garmin, FAO, NOAA, USGS, EPA, Esri, HERE, Garmin, SafeGraph, GeoTechnologies, Inc, METI/NASA, USGS, EPA, US Census Bureau, USDA

Project Description:

Rehabilitation of Wilson Tunnels on Likelike Highway, Route 63.

Mile Post/s:

Complete Streets (CS):

Project will implement: Not Applicable.

Existing Feature/s: Not Applicable.

ORTP Project #: O-21-14

Neighborhood(s): Kalihi Valley

Estimated Total Project Cost: \$54,000,000

Total Project Cost Notes:

(May include project costs outside of the 4-year TIP and 2 informational years.)

Project Sponsor: State of Hawaii (FHWA Funded)

Agency Responsible for Carrying Out Project/Phase:

Hawaii Department of Transportation

FOR INFORMATION ONLY

Phase	FFY 2022			FFY 2023			FFY 2024			FFY 2025			FFY 2026			FFY 2027			Funding Category
	Total (x\$1000)	Federal (x\$1000)	Local (x\$1000)	Total (x\$1000)	Federal (x\$1000)	Local (x\$1000)	Total (x\$1000)	Federal (x\$1000)	Local (x\$1000)	Total (x\$1000)	Federal (x\$1000)	Local (x\$1000)	Total (x\$1000)	Federal (x\$1000)	Local (x\$1000)	Total (x\$1000)	Federal (x\$1000)	Local (x\$1000)	
Phase 1																			
PE1	0	0	0	0	0	0	200	160	40	0	0	0	0	0	0	0	0	0	NHPP
PE2	0	0	0	0	0	0	500	400	100	0	0	0	0	0	0	0	0	0	NHPP
CON	0	0	0	0	0	0	6,250	2,500	3,750	0	0	0	0	0	0	0	0	0	NHPP
ADVCON	0	0	0	0	0	0	0	0	0	0	2,500	-2,500	0	0	0	0	0	0	NHPP
Phase 2																			
PE1	0	0	0	0	0	0	1,200	960	240	0	0	0	0	0	0	0	0	0	NHPP
PE2	0	0	0	0	0	0	0	0	0	1,000	800	200	0	0	0	0	0	0	NHPP
ROW	0	0	0	0	0	0	0	0	0	120	96	24	0	0	0	0	0	0	NHPP
CON	0	0	0	0	0	0	0	0	0	0	0	0	44,000	17,200	26,800	0	0	0	NHPP
ADVCON	0	0	0	0	0	0	0	0	0	0	0	0	0	0	0	0	18,000	-18,000	NHPP
Total	0	0	0	0	0	0	8,150	4,020	4,130	1,120	3,396	-2,276	44,000	17,200	26,800	0	18,000	-18,000	

FHWA Funded Projects: City and County of Honolulu



Source: Esri, Maxar, GeoEye, Earthstar Geographics, CNES/Airbus DS, USDA, USGS, AeroGRID, IGN, and the GIS User Community

Project Description:

An on-going islandwide program for the implementation of the Oahu Bicycle Master Plan improvements, the development of new projects, and the upgrade of existing bicycle projects.

Mile Post/s:

Complete Streets (CS):

Project will implement: Bikeway improvements; new bikeway projects; and bikeway upgrades.

Existing Feature/s: See Oahu Bicycle Master Plan.

ORTP Project #: OC2

Neighborhood(s): Island wide

Estimated Total Project Cost: \$20,829,000

Total Project Cost Notes:

(May include project costs outside of the 4-year TIP and 2 informational years.)

Project Sponsor: City and County of Honolulu

Agency Responsible for Carrying Out Project/Phase:

City Department of Transportation Services

FOR INFORMATION ONLY

Phase	FFY 2022			FFY 2023			FFY 2024			FFY 2025			FFY 2026			FFY 2027			Funding Category
	Total (x\$1000)	Federal (x\$1000)	Local (x\$1000)	Total (x\$1000)	Federal (x\$1000)	Local (x\$1000)	Total (x\$1000)	Federal (x\$1000)	Local (x\$1000)	Total (x\$1000)	Federal (x\$1000)	Local (x\$1000)	Total (x\$1000)	Federal (x\$1000)	Local (x\$1000)	Total (x\$1000)	Federal (x\$1000)	Local (x\$1000)	
Haleiwa Road Multi-Use Path																			
CON	0	0	0	0	0	0	0	0	0	219	175	44	1,339	1,071	268	0	0	0	STBG
INSP	0	0	0	0	0	0	0	0	0	0	0	0	428	342	86	0	0	0	STBG
Kailua-Lanikai Bike Path																			
PE1	0	0	0	0	0	0	0	0	0	563	451	112	0	0	0	0	0	0	STBG
PE2	0	0	0	0	0	0	0	0	0	0	0	0	0	0	0	204	163	41	STBG
ROW	0	0	0	0	0	0	0	0	0	1	0	1	0	0	0	0	0	0	STBG
CON	0	0	0	0	0	0	0	0	0	0	0	0	1,020	816	204	0	0	0	STBG
INSP	0	0	0	0	0	0	0	0	0	0	0	0	255	204	51	0	0	0	STBG
Keolu Drive Complete Streets																			
PE1	0	0	0	1,000	800	200	0	0	0	0	0	0	0	0	0	0	0	0	STBG
PE2	0	0	0	0	0	0	0	0	0	500	400	100	0	0	0	0	0	0	STBG
CON	0	0	0	0	0	0	0	0	0	0	0	0	5,700	4,560	1,140	0	0	0	STBG
INSP	0	0	0	0	0	0	0	0	0	0	0	0	1,425	1,140	285	0	0	0	STBG
South Shore Bikeway (EW Transportation Corridor Planning)																			
PE1	0	0	0	0	0	0	3,000	2,400	600	3,000	2,400	600	0	0	0	0	0	0	HIP-CPF/CDS

OC2 Bikeway Improvements Program

													FOR INFORMATION ONLY						Funding Category
FFY 2022			FFY 2023			FFY 2024			FFY 2025			FFY 2026			FFY 2027				
	Total	Federal	Local	Total	Federal	Local	Total	Federal	Local	Total	Federal	Local	Total	Federal	Local	Total	Federal	Local	
Phase	(x\$1000)	(x\$1000)	(x\$1000)	(x\$1000)	(x\$1000)	(x\$1000)	(x\$1000)	(x\$1000)	(x\$1000)	(x\$1000)	(x\$1000)	(x\$1000)	(x\$1000)	(x\$1000)	(x\$1000)	(x\$1000)	(x\$1000)	(x\$1000)	
South Shore Bikeway (EW Transportation Corridor Planning)																			
PE1	0	0	0	0	0	0	150	120	30	300	240	60	0	0	0	0	0	0	STBG
Waipahu Depot Shared Use Path																			
PE2	0	0	0	0	0	0	0	0	0	425	340	85	0	0	0	0	0	0	STBG
CON	0	0	0	0	0	0	0	0	0	0	0	0	1,040	832	208	0	0	0	STBG
INSP	0	0	0	0	0	0	0	0	0	0	0	0	260	208	52	0	0	0	STBG
Total	0	0	0	1,000	800	200	3,150	2,520	630	5,008	4,006	1,002	11,467	9,173	2,294	204	163	41	



Source: Esri, Maxar, GeoEye, Earthstar Geographics, CNES/Airbus DS, USDA, USGS, AeroGRID, IGN, and the GIS User Community

Project Description:

Provide traffic congestion relief and improve traffic safety at various locations, including but not limited to Mahoe/Waipahu Streets and Manager's Drive/Hiapo Street intersection.

Mile Post/s: Not applicable.

Complete Streets (CS):

Project will implement: Project will incorporate complete streets features for pedestrian use.

Existing Feature/s: No information available.

ORTP Project #: OC8

Neighborhood(s): Various Locations

Estimated Total Project Cost: \$7,050,000

Total Project Cost Notes:

(May include project costs outside of the 4-year TIP and 2 informational years.)

Project Sponsor: City and County of Honolulu

Agency Responsible for Carrying Out Project/Phase:

City Department of Transportation Services

FOR INFORMATION ONLY

Phase	FFY 2022			FFY 2023			FFY 2024			FFY 2025			FFY 2026			FFY 2027			Funding Category	
	Total (x\$1000)	Federal (x\$1000)	Local (x\$1000)	Total (x\$1000)	Federal (x\$1000)	Local (x\$1000)	Total (x\$1000)	Federal (x\$1000)	Local (x\$1000)	Total (x\$1000)	Federal (x\$1000)	Local (x\$1000)	Total (x\$1000)	Federal (x\$1000)	Local (x\$1000)	Total (x\$1000)	Federal (x\$1000)	Local (x\$1000)		
Mahoe and Waipahu Streets																				
CON	0	0	0	5,350	4,000	1,350	0	0	0	0	0	0	0	0	0	0	0	0	0	STBG
INSP	0	0	0	1,000	800	200	0	0	0	0	0	0	0	0	0	0	0	0	0	STBG
Manager's Drive/Hiapo Street Intersection Improvements																				
PE1	300	240	60	0	0	0	0	0	0	0	0	0	0	0	0	0	0	0	0	STBG
PE2	0	0	0	0	0	0	0	0	0	400	320	80	0	0	0	0	0	0	0	STBG
CON	0	0	0	0	0	0	0	0	0	0	0	0	0	0	0	0	0	0	0	STBG
INSP	0	0	0	0	0	0	0	0	0	0	0	0	0	0	0	0	0	0	0	STBG
Total	300	240	60	6,350	4,800	1,550	0	0	0	400	320	80	0	0	0	0	0	0	0	



Source: Esri, Maxar, GeoEye, Earthstar Geographics, CNES/Airbus DS, USDA, USGS, AeroGRID, IGN, and the GIS User Community

Project Description:

The Transportation Alternatives (TA) Set-Aside is a competitive grant program that provides funding for programs and projects defined as transportation alternatives, including on- and off-road pedestrian and bicycle facilities, and infrastructure projects for improving non-driver access to public transportation and enhanced mobility, and community improvement activities. Locations to be determined by the OahuMPO TA Set-Aside Project Evaluation and Ranking process. Projects may be flexed from FHWA to FTA.

Mile Post/s:

Complete Streets (CS):

Project will implement: Project will incorporate complete streets features for pedestrian and bicycle use.

Existing Feature/s: No information available.

ORTP Project #: OC25

Neighborhood(s): McCully-Moilili, Various Locations

Estimated Total Project Cost: \$43,858,000

Total Project Cost Notes:

(May include project costs outside of the 4-year TIP and 2 informational years.)

Project Sponsor: City and County of Honolulu

Agency Responsible for Carrying Out Project/Phase:

City Department of Transportation Services

													FOR INFORMATION ONLY						Funding Category
FFY 2022			FFY 2023			FFY 2024			FFY 2025			FFY 2026			FFY 2027				
	Total	Federal	Local	Total	Federal	Local	Total	Federal	Local	Total	Federal	Local	Total	Federal	Local	Total	Federal	Local	
Phase	(x\$1000)	(x\$1000)	(x\$1000)	(x\$1000)	(x\$1000)	(x\$1000)	(x\$1000)	(x\$1000)	(x\$1000)	(x\$1000)	(x\$1000)	(x\$1000)	(x\$1000)	(x\$1000)	(x\$1000)	(x\$1000)	(x\$1000)	(x\$1000)	
Ala Wai Bridge Project																			
PE2	0	0	0	0	0	0	2,140	1,712	428	0	0	0	0	0	0	0	0	0	TA
CON	0	0	0	0	0	0	0	0	0	31,250	25,000	6,250	0	0	0	0	0	0	FHWA Grant
CON	0	0	0	0	0	0	0	0	0	2,345	1,876	469	0	0	0	0	0	0	TA
INSP	0	0	0	0	0	0	0	0	0	2,497	1,998	499	0	0	0	0	0	0	FHWA Grant
Rail Station Multimodal Access Improvements - Halawa (Aloha Stadium) Station and Waiawa (Pearl Highlands) Station																			
PE2	0	0	0	0	0	0	656	525	131	0	0	0	0	0	0	0	0	0	TA
CON	0	0	0	0	0	0	2,625	2,100	525	0	0	0	0	0	0	0	0	0	TA
CON	0	0	0	0	0	0	1,838	1,470	368	0	0	0	0	0	0	0	0	0	TA
INSP	0	0	0	0	0	0	238	190	48	0	0	0	0	0	0	0	0	0	TA
Total	0	0	0	0	0	0	7,497	5,997	1,500	36,092	28,874	7,218	0	0	0	0	0	0	



Source: Esri, Maxar, GeoEye, Earthstar Geographics, CNES/Airbus DS, USDA, USGS, AeroGRID, IGN, and the GIS User Community

Project Description:

The Transportation Alternatives (TA) Set-Aside is a competitive grant program that provides funding for programs and projects defined as transportation alternatives, including on- and off-road pedestrian and bicycle facilities, infrastructure projects for improving non-driver access to public transportation and enhanced mobility, and community improvement activities. Locations to be determined by the State TA Set-Aside Project Evaluation and Ranking process. Projects may be flexed from FHWA to FTA.

Mile Post/s:

Complete Streets (CS):

Project will implement: Project will incorporate complete streets features for pedestrian and bicycle use.

Existing Feature/s: No information available.

ORTP Project #: OC26

Neighborhood(s): North Shore, Island wide

Estimated Total Project Cost: \$22,235,000

Total Project Cost Notes:

(May include project costs outside of the 4-year TIP and 2 informational years.)

Project Sponsor: City and County of Honolulu

Agency Responsible for Carrying Out Project/Phase:

City Department of Transportation Services

FOR INFORMATION ONLY

Phase	FFY 2022			FFY 2023			FFY 2024			FFY 2025			FFY 2026			FFY 2027			Funding Category
	Total (x\$1000)	Federal (x\$1000)	Local (x\$1000)	Total (x\$1000)	Federal (x\$1000)	Local (x\$1000)	Total (x\$1000)	Federal (x\$1000)	Local (x\$1000)	Total (x\$1000)	Federal (x\$1000)	Local (x\$1000)	Total (x\$1000)	Federal (x\$1000)	Local (x\$1000)	Total (x\$1000)	Federal (x\$1000)	Local (x\$1000)	
Ala Wai Bridge Project																			
PE2	0	0	0	0	0	0	2,750	2,200	550	0	0	0	0	0	0	0	0	0	TA
Oahu SRTS Coordinator																			
PLN	0	0	0	110	88	22	0	0	0	0	0	0	0	0	0	0	0	0	TA
Rail Station Multimodal Access Improvements - Halawa (Aloha Stadium) Station and Waiawa (Pearl Highlands) Station																			
CON	0	0	0	0	0	0	0	0	0	8,100	6,480	1,620	0	0	0	0	0	0	FHWA Grant
CON	0	0	0	0	0	0	7,250	5,800	1,450	0	0	0	0	0	0	0	0	0	TA
INSP	0	0	0	0	0	0	0	0	0	1,125	900	225	0	0	0	0	0	0	FHWA Grant
INSP	0	0	0	0	0	0	0	0	0	900	720	180	0	0	0	0	0	0	FHWA Grant
University of Hawaii West Oahu (UHWO) Rail Station Multimodal Access Improvements																			
CON	0	0	0	0	0	0	3,000	2,400	600	0	0	0	0	0	0	0	0	0	TA
Total	0	0	0	110	88	22	13,000	10,400	2,600	10,125	8,100	2,025	0	0	0	0	0	0	

OC-22-63 Safe Streets and Roads for All (SS4A)



Source: Esri, Maxar, GeoEye, Earthstar Geographics, CNES/Airbus DS, USDA, USGS, AeroGRID, IGN, and the GIS User Community

Project Description:

Program management, design, to install and upgrade sidewalks on City streets consistent with the Pedestrian Plan.

Mile Post/s:

Complete Streets (CS):

Project will implement: Project will incorporate complete streets features for both pedestrian use and bicycle use.

Existing Feature/s: No information available.

ORTP Project #: O-21-22

Neighborhood(s): Island wide

Estimated Total Project Cost: \$64,806,000

Total Project Cost Notes:

(May include project costs outside of the 4-year TIP and 2 informational years.)

Project Sponsor: City and County of Honolulu

Agency Responsible for Carrying Out Project/Phase:

City Department of Transportation Services

													FOR INFORMATION ONLY						Funding Category
FFY 2022			FFY 2023			FFY 2024			FFY 2025			FFY 2026			FFY 2027				
	Total	Federal	Local	Total	Federal	Local	Total	Federal	Local	Total	Federal	Local	Total	Federal	Local	Total	Federal	Local	
Phase	(x\$1000)	(x\$1000)	(x\$1000)	(x\$1000)	(x\$1000)	(x\$1000)	(x\$1000)	(x\$1000)	(x\$1000)	(x\$1000)	(x\$1000)	(x\$1000)	(x\$1000)	(x\$1000)	(x\$1000)	(x\$1000)	(x\$1000)	(x\$1000)	
Kailua																			
PE1	0	0	0	0	0	0	1,500	1,200	300	1,647	1,318	329	0	0	0	0	0	0	STBG
PE2	0	0	0	0	0	0	0	0	0	0	0	0	1,536	1,229	307	0	0	0	STBG
CON	0	0	0	0	0	0	0	0	0	0	0	0	0	0	0	30,710	24,568	6,142	STBG
INSP	0	0	0	0	0	0	0	0	0	0	0	0	0	0	0	7,678	6,142	1,536	STBG
Phase 1																			
PE1	0	0	0	735	588	147	5,000	4,000	1,000	500	400	100	500	400	100	500	400	100	STBG
PE2	0	0	0	0	0	0	500	400	100	500	400	100	500	400	100	500	400	100	STBG
CON	0	0	0	0	0	0	0	0	0	2,000	1,600	400	4,000	3,200	800	4,000	3,200	800	STBG
INSP	0	0	0	0	0	0	0	0	0	500	400	100	1,000	800	200	1,000	800	200	STBG
Total	0	0	0	735	588	147	7,000	5,600	1,400	5,147	4,118	1,029	7,536	6,029	1,507	44,388	35,510	8,878	



Source: Esri, Maxar, GeoEye, Earthstar Geographics, CNES/Airbus DS, USDA, USGS, AeroGRID, IGN, and the GIS User Community

Project Description:

Project to plan, design, and construct charging infrastructure for electric vehicles in City facilities.

Mile Post/s:

Complete Streets (CS):

Project will implement: Not applicable.

Existing Feature/s: Not applicable.

ORTP Project #: O-21-11

Neighborhood(s): Various Locations

Estimated Total Project Cost: \$1,825,000

Total Project Cost Notes:

(May include project costs outside of the 4-year TIP and 2 informational years.)

Project Sponsor: City and County of Honolulu

Agency Responsible for Carrying Out Project/Phase:

City Office of Climate Change, Sustainability and Resiliency

Phase	FFY 2022			FFY 2023			FFY 2024			FFY 2025			FOR INFORMATION ONLY						Funding Category	
	Total	Federal	Local	Total	Federal	Local	Total	Federal	Local	Total	Federal	Local	FFY 2026			FFY 2027				
	(x\$1000)	(x\$1000)	(x\$1000)	(x\$1000)	(x\$1000)	(x\$1000)	(x\$1000)	(x\$1000)	(x\$1000)	(x\$1000)	(x\$1000)	(x\$1000)	(x\$1000)	(x\$1000)	(x\$1000)	(x\$1000)	(x\$1000)	(x\$1000)		
PE1	0	0	0	250	200	50	0	0	0	0	0	0	0	0	0	0	0	0	0	HIP-CPF/CDS
PE2	0	0	0	0	0	0	125	100	25	0	0	0	0	0	0	0	0	0	0	HIP-CPF/CDS
CON	0	0	0	0	0	0	0	0	0	1,250	1,000	250	0	0	0	0	0	0	0	HIP-CPF/CDS
INSP	0	0	0	0	0	0	0	0	0	100	80	20	0	0	0	0	0	0	0	HIP-CPF/CDS
Total	0	0	0	250	200	50	125	100	25	1,350	1,080	270	0	0	0	0	0	0	0	

FTA: Hawaii Department of Transportation



Source: Esri, Maxar, GeoEye, Earthstar Geographics, CNES/Airbus DS, USDA, USGS, AeroGRID, IGN, and the GIS User Community

Project Description:

Enhanced Mobility of Seniors and Individuals with Disabilities for Urbanized Areas (Section 5310 - Urban). Funds from program will be utilized for the purchase of paratransit vehicles.

Mile Post/s: Not applicable

Complete Streets (CS):

Project will implement: Not applicable.

Existing Feature/s: Not applicable.

ORTP Project #: OS50

Neighborhood(s): Various Locations

Estimated Total Project Cost: \$7,902,000

Total Project Cost Notes:

(May include project costs outside of the 4-year TIP and 2 informational years.)

Project Sponsor: State of Hawaii (FTA Funded)

Agency Responsible for Carrying Out Project/Phase:

Hawaii Department of Transportation

													FOR INFORMATION ONLY						Funding Category
FFY 2022			FFY 2023			FFY 2024			FFY 2025			FFY 2026			FFY 2027				
	Total	Federal	Local	Total	Federal	Local	Total	Federal	Local	Total	Federal	Local	Total	Federal	Local	Total	Federal	Local	
Phase	(x\$1000)	(x\$1000)	(x\$1000)	(x\$1000)	(x\$1000)	(x\$1000)	(x\$1000)	(x\$1000)	(x\$1000)	(x\$1000)	(x\$1000)	(x\$1000)	(x\$1000)	(x\$1000)	(x\$1000)	(x\$1000)	(x\$1000)	(x\$1000)	
EQP	594	475	119	1,363	1,090	273	1,410	1,128	282	1,460	1,168	292	1,511	1,209	302	1,564	1,251	313	\$5310
Total	594	475	119	1,363	1,090	273	1,410	1,128	282	1,460	1,168	292	1,511	1,209	302	1,564	1,251	313	

FTA: City and County of Honolulu

OC13 Bus and Handi-Van Acquisition Program



Project Description:

Purchase replacement transit buses and Handi-Van vehicles.

Mile Post/s: Not applicable

Complete Streets (CS):

Project will implement: Not applicable.

Existing Feature/s: Not applicable.

ORTP Project #: OC13

Neighborhood(s): Various Locations

Estimated Total Project Cost: \$433,653,000

Total Project Cost Notes: Project funds may be flexed from FHWA to FTA.
(May include project costs outside of the 4-year TIP and 2 informational years.)

Project Sponsor: City and County of Honolulu

Agency Responsible for Carrying Out Project/Phase:

City Department of Transportation Services

													FOR INFORMATION ONLY						
FFY 2022			FFY 2023			FFY 2024			FFY 2025			FFY 2026			FFY 2027			Funding Category	
Total	Federal	Local	Total	Federal	Local	Total	Federal	Local	Total	Federal	Local	Total	Federal	Local	Total	Federal	Local		
Phase	(x\$1000)	(x\$1000)	(x\$1000)	(x\$1000)	(x\$1000)	(x\$1000)	(x\$1000)	(x\$1000)	(x\$1000)	(x\$1000)	(x\$1000)	(x\$1000)	(x\$1000)	(x\$1000)	(x\$1000)	(x\$1000)	(x\$1000)	(x\$1000)	
OPR	49	39	10	0	0	0	49	39	10	49	39	10	49	39	10	49	39	10	\$5307/\$5340
2022																			
EQP	48,964	39,171	9,793	0	0	0	0	0	0	0	0	0	0	0	0	0	0	0	\$5307/\$5340
EQP	12,500	10,000	2,500	0	0	0	0	0	0	0	0	0	0	0	0	0	0	0	\$5307/\$5340
EQP	618	494	124	0	0	0	0	0	0	0	0	0	0	0	0	0	0	0	\$5310
EQP	1,763	1,410	353	0	0	0	0	0	0	0	0	0	0	0	0	0	0	0	\$5337
EQP	4,325	3,460	865	0	0	0	0	0	0	0	0	0	0	0	0	0	0	0	\$5339
2023																			
EQP	0	0	0	33,996	27,197	6,799	0	0	0	0	0	0	0	0	0	0	0	0	\$5307/\$5340
EQP	0	0	0	0	0	0	12,434	10,245	2,189	0	0	0	0	0	0	0	0	0	\$5307/\$5340
EQP	0	0	0	121	103	18	0	0	0	0	0	0	0	0	0	0	0	0	\$5337
EQP	0	0	0	1,763	1,410	353	0	0	0	0	0	0	0	0	0	0	0	0	\$5337
EQP	0	0	0	3,694	3,140	554	0	0	0	0	0	0	0	0	0	0	0	0	\$5339
EQP	0	0	0	3,814	3,051	763	0	0	0	0	0	0	0	0	0	0	0	0	\$5339
INSP	0	0	0	481	385	96	0	0	0	0	0	0	0	0	0	0	0	0	\$5339
2024																			
EQP	0	0	0	0	0	0	23,529	20,000	3,529	0	0	0	0	0	0	0	0	0	\$5307/\$5340

OC13 Bus and Handi-Van Acquisition Program

FOR INFORMATION ONLY																			
	FFY 2022			FFY 2023			FFY 2024			FFY 2025			FFY 2026			FFY 2027			
	Total	Federal	Local	Total	Federal	Local	Total	Federal	Local	Total	Federal	Local	Total	Federal	Local	Total	Federal	Local	Funding Category
Phase	(x\$1000)	(x\$1000)	(x\$1000)	(x\$1000)	(x\$1000)	(x\$1000)	(x\$1000)	(x\$1000)	(x\$1000)	(x\$1000)	(x\$1000)	(x\$1000)	(x\$1000)	(x\$1000)	(x\$1000)	(x\$1000)	(x\$1000)	(x\$1000)	
2024																			
EQP	0	0	0	0	0	0	475	380	95	0	0	0	0	0	0	0	0	0	\$5310
EQP	0	0	0	0	0	0	893	714	179	0	0	0	0	0	0	0	0	0	\$5337
EQP	0	0	0	0	0	0	856	685	171	0	0	0	0	0	0	0	0	0	\$5337
EQP	0	0	0	0	0	0	6,489	4,711	1,778	0	0	0	0	0	0	0	0	0	\$5339
EQP	0	0	0	0	0	0	13,994	11,755	2,239	0	0	0	0	0	0	0	0	0	\$5339
EQP	0	0	0	0	0	0	23,694	20,000	3,694	0	0	0	0	0	0	0	0	0	\$5339
EQP	0	0	0	0	0	0	4,455	3,564	891	0	0	0	0	0	0	0	0	0	\$5339
EQP	0	0	0	0	0	0	23,694	20,000	3,694	0	0	0	0	0	0	0	0	0	\$5339
EQP	0	0	0	0	0	0	445	356	89	0	0	0	0	0	0	0	0	0	\$5339
EQP	0	0	0	0	0	0	10,000	10,000	0	0	0	0	0	0	0	0	0	0	HIP-CPF/CDS
2025																			
EQP	0	0	0	0	0	0	0	0	0	53,629	42,903	10,726	0	0	0	0	0	0	\$5307/\$5340
EQP	0	0	0	0	0	0	0	0	0	23,531	18,825	4,706	0	0	0	0	0	0	\$5307/\$5340
EQP	0	0	0	0	0	0	0	0	0	650	520	130	0	0	0	0	0	0	\$5310
EQP	0	0	0	0	0	0	0	0	0	1,866	1,493	373	0	0	0	0	0	0	\$5337
EQP	0	0	0	0	0	0	0	0	0	25,000	20,000	5,000	0	0	0	0	0	0	\$5339
EQP	0	0	0	0	0	0	0	0	0	4,362	3,708	654	0	0	0	0	0	0	\$5339
2026																			
EQP	0	0	0	0	0	0	0	0	0	0	0	0	16,333	13,066	3,267	0	0	0	\$5307/\$5340
EQP	0	0	0	0	0	0	0	0	0	0	0	0	1,354	1,083	271	0	0	0	\$5310
EQP	0	0	0	0	0	0	0	0	0	0	0	0	5,438	4,350	1,088	0	0	0	\$5337
EQP	0	0	0	0	0	0	0	0	0	0	0	0	23,694	20,000	3,694	0	0	0	\$5339
EQP	0	0	0	0	0	0	0	0	0	0	0	0	481	385	96	0	0	0	\$5339
2027																			
EQP	0	0	0	0	0	0	0	0	0	0	0	0	0	0	0	17,206	13,765	3,441	\$5307/\$5340
EQP	0	0	0	0	0	0	0	0	0	0	0	0	0	0	0	1,380	1,104	276	\$5310
EQP	0	0	0	0	0	0	0	0	0	0	0	0	0	0	0	5,548	4,438	1,110	\$5337
EQP	0	0	0	0	0	0	0	0	0	0	0	0	0	0	0	491	393	98	\$5339
EQP	0	0	0	0	0	0	0	0	0	0	0	0	0	0	0	23,694	20,000	3,694	\$5339
Total	68,219	54,574	13,645	43,869	35,286	8,583	121,007	102,449	18,558	109,087	87,488	21,599	47,349	38,923	8,426	48,368	39,739	8,629	



Source: Esri, Maxar, GeoEye, Earthstar Geographics, CNES/Airbus DS, USDA, USGS, AeroGRID, IGN, and the GIS User Community

Project Description:

To modify bus stops and bring them into compliance with the Americans with Disabilities Act (ADA), improve the mobility independence for transit users of all ages and abilities, pedestrian access, and the number of ADA accessible bus stops.

Mile Post/s: Not applicable

Complete Streets (CS):

Project will implement: ADA compliant site improvements on bus stop shelter, pavement, and landing provide pedestrians and bicycles with access to transit.

Existing Feature/s: No information available.

ORTP Project #: OC14

Neighborhood(s): Various Locations

Estimated Total Project Cost: \$8,877,000

Total Project Cost Notes:

(May include project costs outside of the 4-year TIP and 2 informational years.)

Project Sponsor: City and County of Honolulu

Agency Responsible for Carrying Out Project/Phase:

City Department of Transportation Services

													FOR INFORMATION ONLY						
	FFY 2022			FFY 2023			FFY 2024			FFY 2025			FFY 2026			FFY 2027			
	Total	Federal	Local	Total	Federal	Local	Total	Federal	Local	Total	Federal	Local	Total	Federal	Local	Total	Federal	Local	Funding Category
Phase	(x\$1000)	(x\$1000)	(x\$1000)	(x\$1000)	(x\$1000)	(x\$1000)	(x\$1000)	(x\$1000)	(x\$1000)	(x\$1000)	(x\$1000)	(x\$1000)	(x\$1000)	(x\$1000)	(x\$1000)	(x\$1000)	(x\$1000)	(x\$1000)	
PE1	0	0	0	0	0	0	1	0	1	0	0	0	2	0	2	0	0	0	\$5307/\$5340
PE2	0	0	0	0	0	0	370	296	74	0	0	0	1,500	1,200	300	0	0	0	\$5307/\$5340
DES	365	292	73	0	0	0	166	133	33	365	292	73	365	292	73	365	292	73	\$5307/\$5340
CON	251	201	50	0	0	0	0	0	0	251	201	50	251	201	50	251	201	50	\$5307/\$5340
CON	0	0	0	0	0	0	0	0	0	1,600	1,280	320	0	0	0	700	560	140	\$5307/\$5340
CON	119	119	0	0	0	0	1,405	1,124	281	0	0	0	0	0	0	0	0	0	\$5310
EQP	0	0	0	0	0	0	0	0	0	400	0	400	0	0	0	150	0	150	\$5307/\$5340
Total	735	612	123	0	0	0	1,942	1,553	389	2,616	1,773	843	2,118	1,693	425	1,466	1,053	413	

OC16 Honolulu Rail Transit Project



Esri, HERE, Garmin, SafeGraph, METI/NASA, USGS, EPA, USDA, Earthstar Geographics, Esri, HERE, Garmin, FAO, NOAA, USGS, EPA

Project Description:

Plan, design, and construct a fixed guideway system between East Kapolei and Civic Center. The system includes stations and related appurtenances, park-and-ride facilities, a maintenance and storage facility, light metro vehicles, and associated core systems.

Mile Post/s: Not applicable

Complete Streets (CS):

Project will implement: Not applicable.

Existing Feature/s: Not applicable.

ORTP Project #: OC16

Neighborhood(s): Ala Moana-Kakaako, Downtown, Kalihi-Palama, Airport, Pearl City, Waipahu, Ewa, Makakilo-Kapolei-Honokai Hale

Estimated Total Project Cost: \$9,148,050,000

Total Project Cost Notes:

(May include project costs outside of the 4-year TIP and 2 informational years.)

Project Sponsor: City and County of Honolulu

Agency Responsible for Carrying Out Project/Phase:

Honolulu Authority for Rapid Transportation

Phase	FFY 2022			FFY 2023			FFY 2024			FFY 2025			FOR INFORMATION ONLY						Funding Category	
	Total (x\$1000)	Federal (x\$1000)	Local (x\$1000)	Total (x\$1000)	Federal (x\$1000)	Local (x\$1000)	Total (x\$1000)	Federal (x\$1000)	Local (x\$1000)	Total (x\$1000)	Federal (x\$1000)	Local (x\$1000)	FFY 2026			FFY 2027				
													Total (x\$1000)	Federal (x\$1000)	Local (x\$1000)	Total (x\$1000)	Federal (x\$1000)	Local (x\$1000)		
\$5307 Flex Funds																				
H RTP	0	0	0	37,500	30,000	7,500	30,000	25,000	5,000	30,000	25,000	5,000	12,000	10,000	2,000	12,000	10,000	2,000	\$5307/\$5340	
\$5309 American Rescue Plan Act																				
H RTP	70,000	70,000	0	0	0	0	0	0	0	0	0	0	0	0	0	0	0	0	\$5309	
\$5309 New Starts																				
H RTP	0	0	0	0	0	0	495,000	375,000	120,000	165,000	125,000	40,000	165,000	125,000	40,000	156,728	118,733	37,995	\$5309	
Sen. Schatz Appropriation																				
H RTP	0	0	0	63,750	63,750	0	0	0	0	0	0	0	0	0	0	0	0	0	Discretionary	
TAP State - Chinatown Bike Facility																				
PE2/CON	0	0	0	0	0	0	0	0	0	0	0	0	0	0	0	250	200	50	\$5307/\$5340	
TAP State - Middle Loch Connector																				
CON	0	0	0	0	0	0	0	0	0	500	400	100	500	400	100	0	0	0	\$5307/\$5340	
TAP State - Secure Bicycle Storage																				
CON	0	0	0	0	0	0	250	200	50	0	0	0	0	0	0	250	200	50	\$5307/\$5340	

OC16

Honolulu Rail Transit Project

Total	70,000	70,000	0	101,250	93,750	7,500	525,250	400,200	125,050	195,500	150,400	45,100	177,500	135,400	42,100	169,228	129,133	40,095
-------	--------	--------	---	---------	--------	-------	---------	---------	---------	---------	---------	--------	---------	---------	--------	---------	---------	--------



Source: Esri, Maxar, GeoEye, Earthstar Geographics, CNES/Airbus DS, USDA, USGS, AeroGRID, IGN, and the GIS User Community

Project Description:

Department of Transportation Services staff attendance at training workshops offered by the National Transit Institute.

Mile Post/s:

Complete Streets (CS):

Project will implement: Not applicable.

Existing Feature/s: Not applicable.

ORTP Project #: OC24

Neighborhood(s): Various Locations

Estimated Total Project Cost: \$118,000

Total Project Cost Notes:

(May include project costs outside of the 4-year TIP and 2 informational years.)

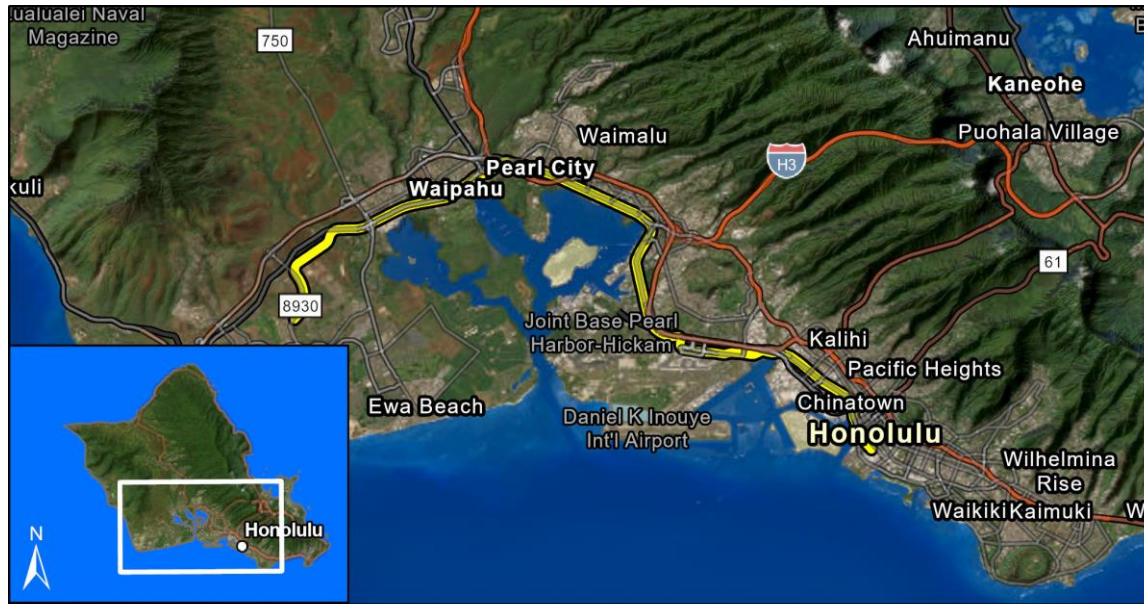
Project Sponsor: City and County of Honolulu

Agency Responsible for Carrying Out Project/Phase:

City Department of Transportation Services

Phase													FOR INFORMATION ONLY						Funding Category
	FFY 2022			FFY 2023			FFY 2024			FFY 2025			FFY 2026			FFY 2027			
	Total	Federal	Local	Total	Federal	Local	Total	Federal	Local	Total	Federal	Local	Total	Federal	Local	Total	Federal	Local	
	(x\$1000)	(x\$1000)	(x\$1000)	(x\$1000)	(x\$1000)	(x\$1000)	(x\$1000)	(x\$1000)	(x\$1000)	(x\$1000)	(x\$1000)	(x\$1000)	(x\$1000)	(x\$1000)	(x\$1000)	(x\$1000)	(x\$1000)	(x\$1000)	
OPR	0	0	0	0	0	0	29	23	6	29	23	6	30	24	6	30	24	6	\$5307/\$5340
Total	0	0	0	0	0	0	29	23	6	29	23	6	30	24	6	30	24	6	

OC-21-59 Intermodal Connectivity - TA Set-Aside (OahuMPO)



Esri, HERE, Garmin, SafeGraph, METI/NASA, USGS, EPA, USDA, Earthstar Geographics, Esri, HERE, Garmin, FAO, NOAA, USGS, EPA

Project Description:

The Transportation Alternatives (TA) Set-Aside is a competitive grant program that provides funding for programs and projects defined as transportation alternatives, including on- and off-road pedestrian and bicycle facilities, infrastructure projects for improving non-driver access to public transportation and enhanced mobility, and community.

Mile Post/s:

Complete Streets (CS):

Project will implement: Project will incorporate complete streets features for both pedestrian use and bicycle use.

Existing Feature/s: No information available.

ORTP Project #: OC25

Neighborhood(s): Various Locations

Estimated Total Project Cost: \$23,842,000

Total Project Cost Notes:

(May include project costs outside of the 4-year TIP and 2 informational years.)

Project Sponsor: City and County of Honolulu

Agency Responsible for Carrying Out Project/Phase:

City Department of Transportation Services

FOR INFORMATION ONLY

Phase	FFY 2022			FFY 2023			FFY 2024			FFY 2025			FFY 2026			FFY 2027			Funding Category	
	Total (x\$1000)	Federal (x\$1000)	Local (x\$1000)	Total (x\$1000)	Federal (x\$1000)	Local (x\$1000)	Total (x\$1000)	Federal (x\$1000)	Local (x\$1000)	Total (x\$1000)	Federal (x\$1000)	Local (x\$1000)	Total (x\$1000)	Federal (x\$1000)	Local (x\$1000)	Total (x\$1000)	Federal (x\$1000)	Local (x\$1000)		
Rail Station Multimodal Access Improvements - Halawa (Aloha Stadium) Station and Waiawa (Pearl Highlands) Station																				
PE1	0			0	0	0	1,250	1,000	250	0	0	0	0	0	0	0	0	0	0	\$5307/\$5340
PE2	0	0	0	0	0	0	625	500	125	0	0	0	0	0	0	0	0	0	0	\$5307/\$5340
PE2	0			0	0	0	2,642	2,113	529	0	0	0	0	0	0	0	0	0	0	\$5307/\$5340
CON	0	0	0	0	0	0	14,575	2,000	12,575	0	0	0	0	0	0	0	0	0	0	\$5307/\$5340
CON	0	0	0	0	0	0	1,750	1,400	350	0	0	0	0	0	0	0	0	0	0	\$5307/\$5340
INSP	0	0	0	0	0	0	3,000	181	2,819	0	0	0	0	0	0	0	0	0	0	\$5307/\$5340
Total	0	0	0	0	0	0	23,842	7,194	16,648	0	0	0	0	0	0	0	0	0	0	

OC-22-67 Intermodal Connectivity Improvements



Esri, HERE, Garmin, SafeGraph, METI/NASA, USGS, EPA, USDA, Earthstar Geographics, Esri, HERE, Garmin, FAO, NOAA, USGS, EPA

Project Description:

Acquire land, plan, design, construct and inspect improvements to intermodal centers and transit complete street connections within communities.

Mile Post/s:

Complete Streets (CS):

Project will implement: Project will incorporate complete streets features for both pedestrian use and bicycle use.

Existing Feature/s: No information available.

ORTP Project #: O-21-22

Neighborhood(s): Various Locations

Estimated Total Project Cost: \$132,000,000

Total Project Cost Notes:

(May include project costs outside of the 4-year TIP and 2 informational years.)

Project Sponsor: City and County of Honolulu

Agency Responsible for Carrying Out Project/Phase:

City Department of Transportation Services

FOR INFORMATION ONLY

Phase	FFY 2022			FFY 2023			FFY 2024			FFY 2025			FFY 2026			FFY 2027			Funding Category
	Total (x\$1000)	Federal (x\$1000)	Local (x\$1000)	Total (x\$1000)	Federal (x\$1000)	Local (x\$1000)	Total (x\$1000)	Federal (x\$1000)	Local (x\$1000)	Total (x\$1000)	Federal (x\$1000)	Local (x\$1000)	Total (x\$1000)	Federal (x\$1000)	Local (x\$1000)	Total (x\$1000)	Federal (x\$1000)	Local (x\$1000)	
PE1	0	0	0	0	0	0	100	0	100	500	0	500	200	0	200	200	0	200	\$5307/\$5340
PE2	0	0	0	0	0	0	500	0	500	1,200	0	1,200	800	0	800	800	0	800	\$5307/\$5340
CON	0	0	0	0	0	0	6,620	995	5,625	4,000	0	4,000	4,500	0	4,500	4,500	0	4,500	\$5307/\$5340
INSP	0	0	0	0	0	0	780	0	780	500	0	500	500	0	500	500	0	500	\$5307/\$5340
Total	0	0	0	0	0	0	8,000	995	7,005	6,200	0	6,200	6,000	0	6,000	6,000	0	6,000	



Source: Esri, Maxar, GeoEye, Earthstar Geographics, CNES/Airbus DS, USDA, USGS, AeroGRID, IGN, and the GIS User Community

Project Description:

Plan, design, construct, inspect and provide related equipment to City facilities infrastructure upgrade for electric charging stations. Projects may be flexed from FHWA to FTA.

Mile Post/s:**Complete Streets (CS):**

Project will implement: Not applicable.

Existing Feature/s: Not applicable.

ORTP Project #: O-21-18

Neighborhood(s): Various Locations

Estimated Total Project Cost: \$92,312,000

Total Project Cost Notes:

(May include project costs outside of the 4-year TIP and 2 informational years.)

Project Sponsor: City and County of Honolulu

Agency Responsible for Carrying Out Project/Phase:

City Department of Design and Construction

FOR INFORMATION ONLY

Phase	FFY 2022			FFY 2023			FFY 2024			FFY 2025			FFY 2026			FFY 2027			Funding Category
	Total (x\$1000)	Federal (x\$1000)	Local (x\$1000)	Total (x\$1000)	Federal (x\$1000)	Local (x\$1000)	Total (x\$1000)	Federal (x\$1000)	Local (x\$1000)	Total (x\$1000)	Federal (x\$1000)	Local (x\$1000)	Total (x\$1000)	Federal (x\$1000)	Local (x\$1000)	Total (x\$1000)	Federal (x\$1000)	Local (x\$1000)	
PE1	0	0	0	100	0	100	100	0	100	50	0	50	50	0	50	50	0	50	\$5307/\$5340
PE2	0	0	0	1,300	0	1,300	100	0	100	50	0	50	450	0	450	450	0	450	\$5307/\$5340
CON	0	0	0	7,063	0	7,063	10,000	8,000	2,000	4,900	0	4,900	4,500	3,600	900	4,500	3,600	900	\$5307/\$5340
INSP	0	0	0	0	0	0	200	160	40	200	0	200	200	160	40	200	160	40	\$5307/\$5340
<i>Alapai On Route Chargers</i>																			
CON	0	0	0	4,555	2,505	2,050	0	0	0	0	0	0	0	0	0	0	0	0	\$5339
<i>Pearl City Bus Facility - FY23 Low No Installation of Electric Bus Charging Systems</i>																			
CON	0	0	0	0	0	0	9,161	8,245	916	0	0	0	0	0	0	0	0	0	\$5307/\$5340
<i>Pearl City Bus Facility - Ph 1 Installation of Electric Bus Charging Systems</i>																			
DES	0	0	0	0	0	0	0	0	0	0	0	0	0	0	0	0	0	0	\$5307/\$5340
<i>Pearl City Bus Facility - Ph 2 Installation of Electric Bus Charging Systems</i>																			
CON	0	0	0	0	0	0	35,725	28,580	7,145	0	0	0	0	0	0	0	0	0	\$5307/\$5340
<i>Pearlridge En Route Chargers</i>																			
CON	0	0	0	0	0	0	2,533	2,280	253	0	0	0	0	0	0	0	0	0	\$5307/\$5340
CON	0	0	0	0	0	0	1,875	1,500	375	0	0	0	0	0	0	0	0	0	\$5337

OC-22-68 Electrification of Transportation Infrastructure

Phase	FOR INFORMATION ONLY																		Funding Category
	FFY 2022			FFY 2023			FFY 2024			FFY 2025			FFY 2026			FFY 2027			
	Total	Federal	Local	Total	Federal	Local	Total	Federal	Local	Total	Federal	Local	Total	Federal	Local	Total	Federal	Local	
	(x\$1000)	(x\$1000)	(x\$1000)	(x\$1000)	(x\$1000)	(x\$1000)	(x\$1000)	(x\$1000)	(x\$1000)	(x\$1000)	(x\$1000)	(x\$1000)	(x\$1000)	(x\$1000)	(x\$1000)	(x\$1000)	(x\$1000)	(x\$1000)	
Pearlridge En Route Chargers																			
CON	0	0	0	0	0	0	4,000	3,600	400	0	0	0	0	0	0	0	0	0	\$5339
Total	0	0	0	13,018	2,505	10,513	63,694	52,365	11,329	5,200	0	5,200	5,200	3,760	1,440	5,200	3,760	1,440	