



OAHU METROPOLITAN
PLANNING
ORGANIZATION

Citizen Advisory Committee
January 3, 2024



I. Call to Order



II. Approval of Minutes



III. Reports



IV. Old Business: NONE



V. A. New Business- Nominations followed by 3 minutes for each candidate to campaign. Voting will be conducted via roll call vote.



V. B. New Business – Transportation Improvement Program (TIP) FFYs
2022-2025 Revision 17 Public Review

Background

- **July 2023:** Presented TIP FFYs 2022-2025 Revision 15 Amendment
- **Comments from CAC members:** Difficult to provide comments due to a lack of information or not aware of a public review period
- **Response:** The OahuMPO will present TIP Amendments to start the public review period and will return the following month to provide responses to your comments

TIP FFYs 2022-2025 Revision 17

- Amendment (major changes)
 - Removal of two projects
 - Modifications to one existing project
- Addition of five new projects from the Oahu Regional Transportation Plan (ORTP)

Key Requirements

- Consistent with the Oahu Regional Transportation Plan (ORTP)
- Title VI/Environmental Justice (T6/EJ) Analysis
- Financial Plan (Fiscal Constraint)
- Intergovernmental Review (IGR) and Public Review

Consistency with the Oahu Regional Transportation Plan (ORTP)

- New projects are evaluated based on the goals and objectives of the ORTP
- All projects received similar scores for goals related to safety, system preservation and reliability

Rank	Project #	Project Name	Agency	Estimated Total Project Cost	Total Score
24	OS-23-72	Interstate Route H-3, Safety Improvements, Harano Tunnel North Portal to Kionaole Road Overpass	HDOT	\$3,500,000	36
24	OS-23-74	Moanalua Freeway (Route 78), Aiea Interchange No. 2 Repair and Painting	HDOT	\$12,000,000	36
24	OS-23-75	Sand Island Access Road (Route 64), Honolulu Bascule Bridge Repair and Painting	HDOT	\$33,300,000	36
30	OS-23-71	Interstate Route H-1, McCully Street Separation Bridge Repair and Painting, Phase 1	HDOT	\$12,100,000	32
31	OS-23-73	Kamehameha Highway (Route 83) Intersection Improvements at Waihee Road	HDOT	\$9,400,000	31

Title VI/Environmental Justice (T6/EJ) Analysis

- Assesses the impact of projects in minority and low-income communities
- Ensures there are no significant differences between T6/EJ and Non-T6/EJ communities

T6/EJ Financial Summary*	T6/EJ Block Groups	Non-T6/EJ Block Groups	T6/EJ Block Groups vs. Non-T6/EJ Block Groups
Est. Total Project Expenditures	\$3,558,424,285	\$7,524,677,715	-\$3,966,253,430
% Est. Total Project Expenditures	32%	68%	-36%
# of Block Groups	203	189	14
Per Block Group Expenditures	\$17,529,184	\$39,813,110	-\$22,283,926
Total Population (2020)	390,837	665,869	-275,032
Per Capita Expenditures	\$9,105	\$11,301	-\$2,196
* For the OC16 Honolulu Rail Transit Project, TOD boundaries were used as the specific geography			

Financial Plan (Fiscal Constraint)

- Demonstrates projects can be implemented using committed, available, or reasonably available revenue sources

Revenue: FFY 2022-2025 (x1000)			
Funding Category	Total	Federal	Local
\$5307/\$5340	\$500,447	\$370,923	\$129,524
\$5309	\$730,000	\$570,000	\$160,000
\$5310	\$8,094	\$6,498	\$1,596
\$5329	\$3,036	\$2,427	\$609
\$5337	\$9,137	\$7,315	\$1,822
\$5339	\$123,002	\$100,235	\$22,767
Bridge OS	\$11,213	\$7,482	\$3,731
Discretionary	\$63,750	\$63,750	\$0
Earmark	\$0	\$4,400	-\$4,400
FHWA Grant	\$43,872	\$35,098	\$8,774
HIP-BFP	\$27,720	\$13,176	\$14,544
HIP-CPF/CDS	\$28,069	\$24,455	\$3,614
HSIP	\$21,780	\$23,592	-\$1,812
Local	\$94,551	\$0	\$94,551
NHPP	\$493,281	\$401,708	\$91,573
RHCP	\$2,300	\$2,070	\$230
STBG	\$322,810	\$197,438	\$125,372
STP Enhance	\$0	\$3,457	-\$3,457
TA	\$22,952	\$18,361	\$4,591
TOTAL	\$2,506,014	\$1,852,385	\$653,629

Expenditures: FFY 2022-2025 (x1000)			
Project Phase	Total	Federal	Local
H RTP	\$891,250	\$713,750	\$177,500
PLN	\$111	\$88	\$23
PE1	\$66,202	\$47,917	\$18,285
PE2	\$40,774	\$21,910	\$18,864
PE1/PE2	\$11,000	\$6,800	\$4,200
PE2/CON	\$16,601	\$3,281	\$13,320
DES	\$12,773	\$8,393	\$4,380
ROW	\$6,422	\$3,104	\$3,318
ADVCON	\$0	\$306,423	-\$306,423
CON	\$1,004,103	\$371,158	\$632,945
EQP	\$357,116	\$291,415	\$65,701
OPR	\$78,280	\$64,420	\$13,860
INSP	\$21,382	\$13,726	\$7,656
TOTAL	\$2,506,014	\$1,852,385	\$653,629

Removed Projects

OS-21-43 Kamehameha Highway (Route 99) Seismic Retrofit, Pearl Harbor Interchange, Structure #2

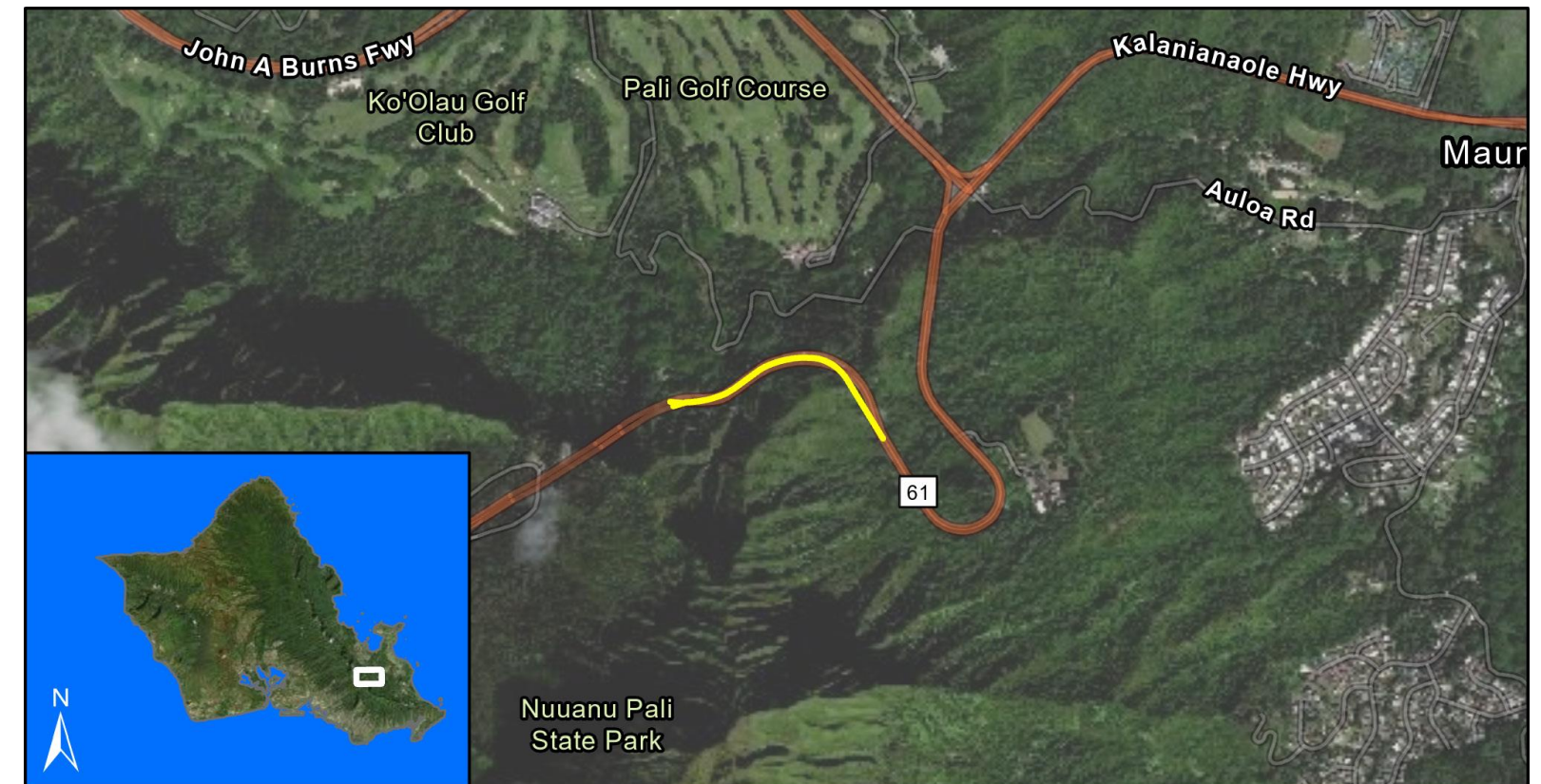
- Request to remove this project:
 - This project is no longer needed due to the updated seismic retrofit assessment



Source: Esri, Maxar, GeoEye, Earthstar Geographics, CNES/Airbus DS, USDA, USGS, AeroGRID, IGN, and the GIS User Community, Sources: Esri, HERE, Garmin, FAO, NOAA, USGS, © OpenStreetMap contributors, and the GIS User Community

OS-21-44 Pali Highway Rockfall Mitigation, Vicinity of MP 6.10 to 6.55

- Request to remove this project:
 - This project will be combined with project OS-21-45 Pali Highway, Rockfall Mitigation, Vicinity of MP 5.9 to MP 6.55 (extended from MP 6.1)



Source: Esri, Maxar, GeoEye, Earthstar Geographics, CNES/Airbus DS, USDA, USGS, AeroGRID, IGN, and the GIS User Community, Sources: Esri, HERE, Garmin, FAO, NOAA, USGS, © OpenStreetMap contributors, and the GIS User Community

Existing Projects

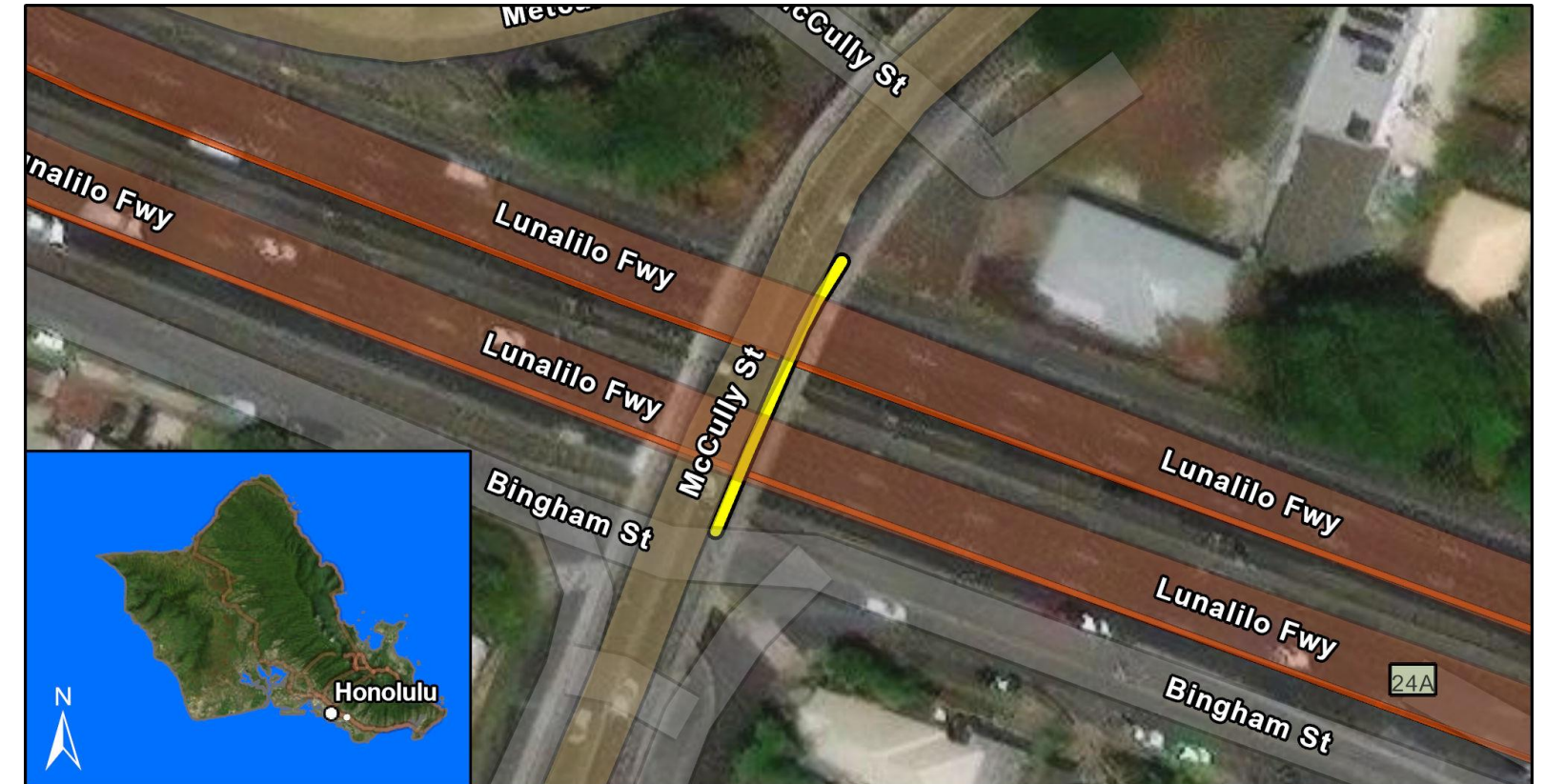
OS1 Bridge and Pavement Improvement Program, Oahu

- **Request to add 3 new projects:**
 - Kamehameha Highway Resurfacing, Laiewai Bridge to Waipuhi Bridge Project (between Laie and Hauula)
 - Interstate Route H-1 Improvements, Vicinity of Pearl City Viaduct to Waimalu Viaduct Project
 - Asphalt Pavement Preservation, Resurfacing and Reconstruction at Various Locations
- **Estimated total project cost: \$126 million (no change)**

New Projects

OS-23-71 Interstate Route H-1, McCully Street Separation Bridge Repair and Painting, Phase 1

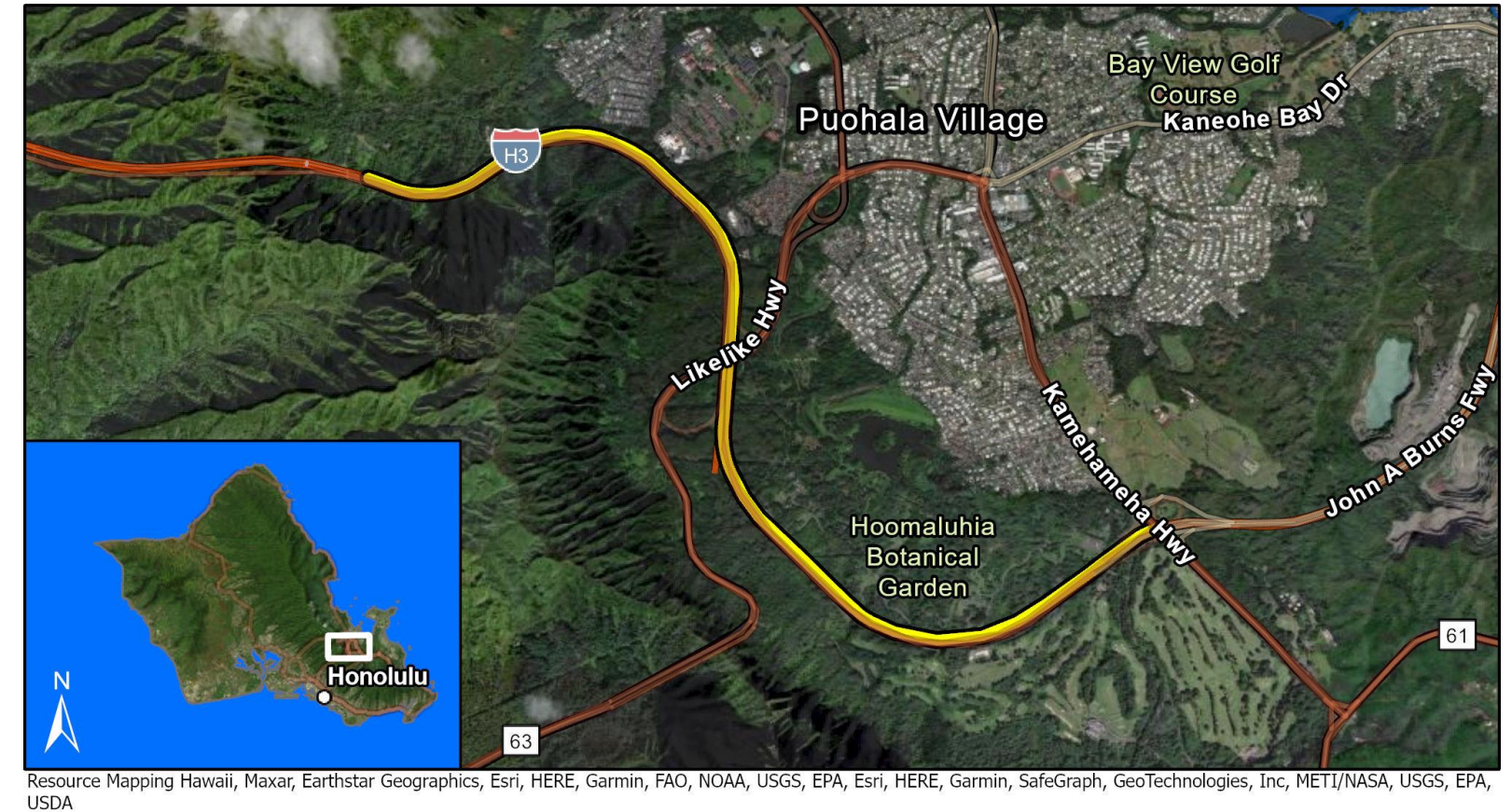
- **Description:** Remove rust and repaint girders, bearings, and railings. Repair joints and replace washers on railing.
- **Funding source:** Bridge Formula Funds
- **Estimated total project cost:** \$12.1 million



Earthstar Geographics, Esri Community Maps Contributors, City and County of Honolulu, © OpenStreetMap, Microsoft, Esri, HERE, Garmin, SafeGraph, GeoTechnologies, Inc, METI/ NASA, USGS, EPA, US Census Bureau, USDA, Esri, HERE, Garmin, FAO, NOAA, USGS, EPA, Resource Mapping Hawaii

OS-23-72 Interstate Route H-3, Safety Improvements, Harano Tunnel North Portal to Kionaole Road Overpass

- **Description:** Scope includes but is not limited to the installation of median and shoulder rumble strips, pavement markings, and signing.
- **Funding source:** Highway Safety Improvement Funds
- **Estimated total project cost:** \$3.5 million



OS-23-73 Kamehameha Highway (Route 83) Intersection Improvements at Waihee Road

- **Description:** Scope includes but is not limited to the roadway widening; relocating utilities and bus stops; installation of curbs, ramps, guardrails and end treatments, pavement markings and signing
- **Funding source:** National Highway Performance Funds
- **Estimated total project cost:** \$9.4 million



OS-23-74 Moanalua Freeway (Route 78), Aiea Interchange No. 2 Repair and Painting

- **Description:** Rehabilitate or repair, paint steel superstructures, clean bridge and remove vegetation growth.
- **Funding source:** Bridge Formula Funds
- **Estimated total project cost:** \$12.0 million



OS-23-75 Sand Island Access Road (Route 64), Honolulu Bascule Bridge Repair and Painting

- **Description:** Rehabilitate or repair, paint steel superstructures, clean bridge and provide measures to prevent growth of cracks.
- **Funding source:** Bridge Formula Funds
- **Estimated total project cost:** \$33.3 million



Please submit comments by
Wednesday, January 17

Document Links:

[TIP FFYs 2022-2025 Revision 17](#)

[TIP FFYs 2022-2025 Revision 17 Comment Form](#)



**V. C. New Business – Transportation Improvement Program (TIP) FFYs
2025-2028 Project and Program Scoring Review**

Transportation Improvement Program (TIP) Development Process

- Covers a period of four years plus two additional years for informational purposes
- Updated every three years to provide a one-year overlap between updates which is compatible with the Statewide Transportation Improvement Program (STIP) development process
 - Current: TIP Federal Fiscal Years 2022-2025
 - Next: TIP Federal fiscal Years 2025-2028

TIP Development Schedule

Activity	Month
Development of financial estimates	July
Call for projects	August - September
Agencies submit projects	October
Project prioritization and selection	November
Project and program scoring review	December
Development of the draft TIP	January - March
Public comment and intergovernmental review	April
Response to comments	May
Committees and Policy Board	June
TIP approval	July
STIP incorporation, and FHWA/FTA approval	September, to coincide with the Federal Fiscal Year
Total processing time	15 months

Project and Program Scoring Criteria

- Projects and programs are evaluated based on the goals and objectives of the Oahu Regional Transportation Plan 2045 (ORTP 2045)
- Some goals award bonus points or negative points

Goal	Highest Possible Score	Lowest Possible Score
Goal 1: Improve the safety of the transportation system	35	0
Goal 2: Support active and public transportation	37	-16
Goal 3: Promote an equitable transportation system	5	0
Goal 4: Improve the resiliency of the transportation system	20	0
Goal 5: Preserve and maintain the transportation system	20	0
Goal 6: Support a reliable and efficient transportation system	12	0
Goal 7: Improve air quality and protect environmental and cultural assets	14	-9
Total	143	-25

Project and Program Scoring Summary

- For the first time, we evaluated all 92 projects and programs
 - 76 existing projects and programs from the TIP FFYs 2022-2025
 - 16 new projects and programs from the ORTP 2045
 - Average score for both existing and new projects and programs was nearly identical at 34 points
- Scores ranged between 4 points and 58.5 points
 - Lowest Score: Halawa Valley Mitigation, Phase 2 (OS-21-50) and Phase 3 (OS-21-56)
 - Highest Score: Salt Lake Boulevard Widening, Phase 3B (OC23)

Project and Program Scores – New vs. Existing

- The top 3 goals between new and existing projects and programs remain the same
- New projects focus even more on these same goals
- Less focus on other goals that support active and public transportation; equity; and environmental and cultural protection

Percentage (%) of projects or programs meeting each goal			
ORTP Goals	Existing	New	New vs. Existing
Goal 1: Improve the safety of the transportation system	82%	100%	+18%
Goal 2: Support active and public transportation	39%	13%	-26%
Goal 3: Promote an equitable transportation system	33%	13%	-20%
Goal 4: Improve the resiliency of the transportation system	30%	38%	+8%
Goal 5: Preserve and maintain the transportation system	87%	100%	+13%
Goal 6: Support a reliable and efficient transportation system	84%	94%	+10%
Goal 7: Improve air quality and protect environmental and cultural assets	55%	13%	-42%

New Project and Program Scores

- Scores ranged between 30 points and 45.5 points
 - Lowest Score: Highway Lighting Replacement at Various Locations (OS-23-73)
 - Highest Score: Pearlridge Bus Transfer Center and Plaza (OC-23-70)

Rank (92 Total)	Project #	Project Name	Agency	Total Score	# of Goals
6	OC-23-70	Pearlridge Bus Transfer Center and Plaza	DTS	45.5	6
21	OS-23-76	Kamehameha Highway (Route 83), Bridge Rehabilitation, Maheiw Stream Bridge	HDOT	39	4
27	OS-23-72	Interstate Route H-3, Safety Improvements, Harano Tunnel North Portal to Kionaole Road Overpass	HDOT	36	3
27	OS-23-74	Moanalua Freeway (Route 78), Aiea Interchange No. 2 Repair and Painting	HDOT	36	3
27	OS-23-75	Sand Island Access Road (Route 64), Honolulu Bascule Bridge Repair and Painting	HDOT	36	3
27	OS-23-77	H-1, Drainage Improvements, Vicinity of Radford Drive	HDOT	36	3
27	OS-23-84	Interstate Route H-3, Safety Improvements, Kionaole Road Overpass to Kaneohe Marine Corp Air Station Main Gate	HDOT	36	3
51	OS-23-78	Likeline Highway (Route 63), Slope Stabilization, Vicinity of Kalihi Elementary School to Vicinity of Emmeline Place	HDOT	35	5
57	OS-23-71	Interstate Route H-1, McCully Street Separation Bridge Repair and Painting, Phase 1	HDOT	32	3
57	OS-23-79	Farrington Highway (Route 93), Rockfall Protection, Vicinity of Yokohama Beach	HDOT	32	4
57	OS-23-80	Kalaniana'ole Highway (Route 72), Rockfall Mitigation, Vicinity of MP 8.14 to MP 8.35	HDOT	32	4
57	OS-23-81	Likeline Highway (Route 63), Rockfall Protection at Wilson Tunnel, Kaneohe Side	HDOT	32	4
57	OS-23-82	Moanalua Freeway (Route H-201), Rockfall Protection, Vicinity of Middle Street	HDOT	32	4
71	OC-23-71	Bus Operations Site Improvements	DTS	31.5	5
72	OS-23-73	Kamehameha Highway Intersection Improvements at Waihee Road	HDOT	31	3
73	OS-23-83	Highway Lighting Replacement at Various Locations, Oahu	HDOT	30	2

Thank you

Document Link:

[TIP FFYs 2025-2028 Project Scores](#)



**VI. Invitation to interested members of the public to
be heard on matters not included on the agenda**



VII. Announcements



VIII. Adjournment